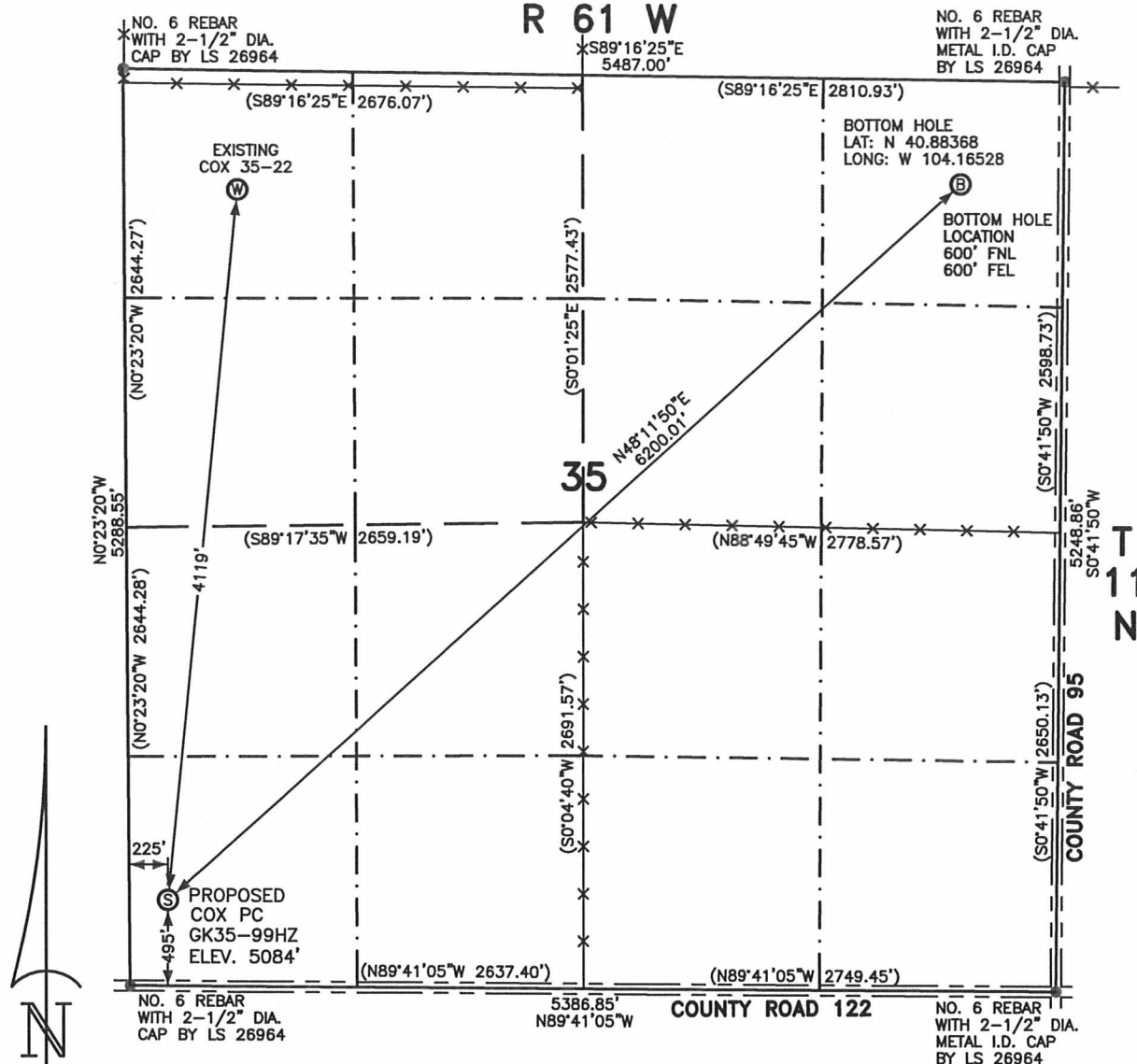


# WELL LOCATION CERTIFICATE

THIS MAP DOES NOT REPRESENT A BOUNDARY SURVEY  
COX PC GK35-99HZ

SECTION 35  
TOWNSHIP 11 NORTH  
RANGE 61 WEST



SCALE: 1"=1000'

0 500 1000



SCALE IN FEET

IN ACCORDANCE WITH A REQUEST FROM RYAN ANTONIO - NOBLE ENERGY INC. LEIBERT-McATEE & ASSOCIATES, INC HAS DETERMINED THE LOCATION OF THE COX PC GK35-99HZ WELL TO BE 495' FSL AND 225' FWL, AS MEASURED AT NINETY (90) DEGREES FROM THE SECTION LINES OF SECTION 35, TOWNSHIP 11 NORTH, RANGE 61 WEST, 6TH PRINCIPAL MERIDIAN, WELD COUNTY, COLORADO. THE BOTTOM HOLE LOCATION PROVIDED BY THE CLIENT IS TO BE 600' FNL AND 600' FEL.

I HEREBY CERTIFY THAT THIS WELL LOCATION CERTIFICATE WAS PREPARED BY ME, OR UNDER MY DIRECT SUPERVISION. THAT THE FIELD WORK WAS COMPLETED ON 10/4/2010, FOR AND ON BEHALF OF NOBLE ENERGY INC, THAT IT IS NOT A LAND SURVEY PLAT OR AN IMPROVEMENT SURVEY PLAT, AND THAT IT IS NOT TO BE RELIED UPON FOR ESTABLISHMENT OF FENCE, BUILDING, OR OTHER FUTURE IMPROVEMENT LINES.

## NOTES:

- 1) BASIS OF BEARINGS FOR THIS MAP ARE BASED UPON GPS OBSERVATIONS MADE ON 10/4/2010 BETWEEN MONUMENT LOCATED AT THE NORTHWEST SECTION CORNER AND THE NORTHEAST SECTION CORNER OF SAID SECTION AND WITH ALL BEARINGS SHOWN HEREON RELATIVE THERETO.
- 2) ELEVATIONS ARE BASED UPON NGS OPUS SOLUTION NAVD 88 DATUM.
- 3) SEE VISIBLE IMPROVEMENTS EXHIBIT FOR ALL IMPROVEMENTS WITHIN 600'.
- 4) THE LOCATION FALLS IN PASTURE.

LATITUDE &amp; LONGITUDE (NAD 83 SURFACE HOLE)

LATITUDE: N 40.87234

LONGITUDE: W 104.18200

PDOP: 2.0

QUARTER-QUARTER: SW1/4SW1/4

NEAREST PROPERTY LINE: 225' WEST

## LEGEND

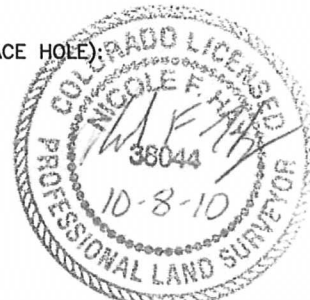
- Ⓢ PROPOSED SURFACE LOCATION
- ⓑ PROPOSED BOTTOM LOCATION
- Ⓦ EXISTING WELL

== == == ROAD

-x-x- FENCE

CALCULATED DIMENSIONS  
ARE IN PARENTHESESGPS OPERATOR: DARREN VEAL  
DWG NO. 326-10

NOTICE: According to Colorado law you MUST commence any legal action based upon any defect in the W.L.C. within three years after you first discover such defect. In no event may only action based upon any defect in this W.L.C. be commenced more than ten years from this sold date of the certification shown hereon.

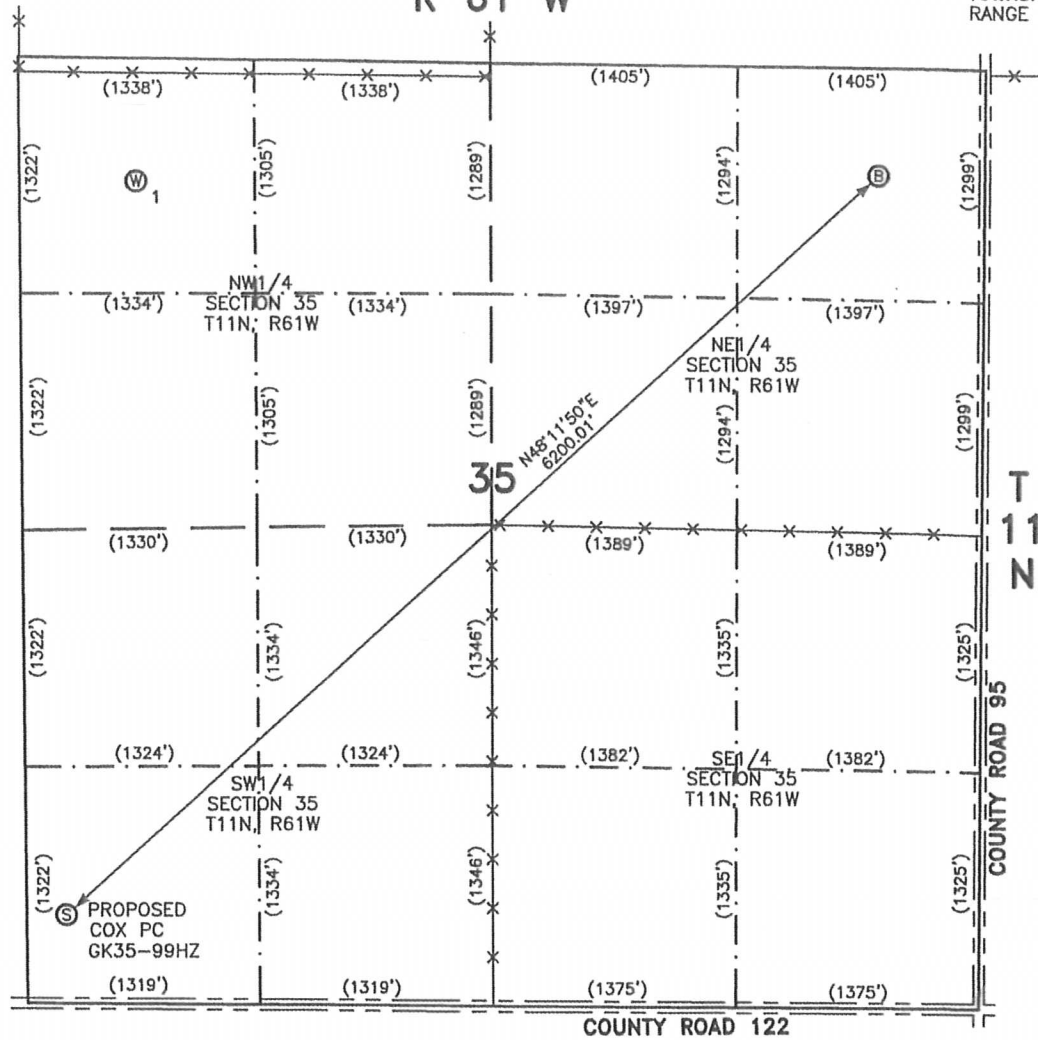


COMPLETED 10-8-10  
NICOLE F. HAY  
FOR AND ON BEHALF OF  
LEIBERT-McATEE & ASSOCIATES, INC  
P.L.S. 38044

# SITE SKETCH – COX PC GK35-99HZ

R 61 W

SECTION 35  
TOWNSHIP 11 NORTH  
RANGE 61 WEST



- 1 EXISTING COX 35-22  
NW1/4NW1/4 SEC. 35  
687' FNL  
659' FWL  
EL 5101'  
N 40.88359  
W 104.18052  
PDOP 2.6

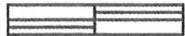
## NOTES:

- 1) THIS SKETCH DOES NOT REPRESENT A BOUNDARY SURVEY.
- 2) THE DATUM FOR THE LATITUDES AND LONGITUDES ON THIS SKETCH IS NAD83.
- 3) ELEVATIONS ARE BASED UPON NGS OPUS SOLUTION NAVD 88 DATUM.



SCALE: 1"=1000'

0 500 1000



SCALE IN FEET

## LEGEND

- ⊙ PROPOSED SURFACE LOCATION
- ⊙ PROPOSED BOTTOM LOCATION
- ⊙ EXISTING WELL

== == == ROAD

— x — FENCE

CALCULATED DIMENSIONS  
ARE IN PARENTHESES