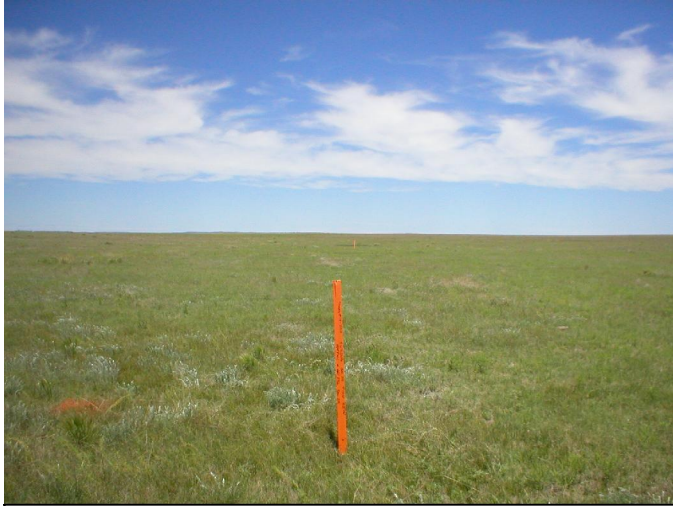


# Location Pictures

Rex Energy Rockies, LLC  
Shapley #14-25H  
SW1/4 SW1/4 Section 25, T10N, R57W  
Weld County, Colorado

LAT: 40.80484° LONG: -103.70529°



PAD LOCATION FACING NORTH



PAD LOCATION FACING EAST



PAD LOCATION FACING SOUTH



PAD LOCATION FACING WEST

DATE OF PICTURES 6/10/2010

Revised: 6/21/10



**WESTERN LAND SERVICES**

Sheridan, WY 82801 (307)673-1817

DP: LDWGRex\Res25-10-57.dwg

Date: 6/18/2010

Rex Energy Rockies, LLC  
Shapley #14-25H

SL: SW1/4 SW1/4 SECTION 25, T10N R57W  
BL: SE1/4 SE1/4 SECTION 25, T10N R57W  
6TH PM, WELD COUNTY, COLORADO