

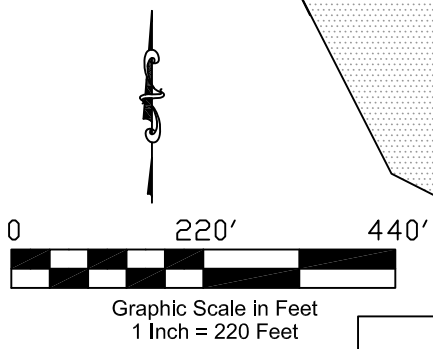
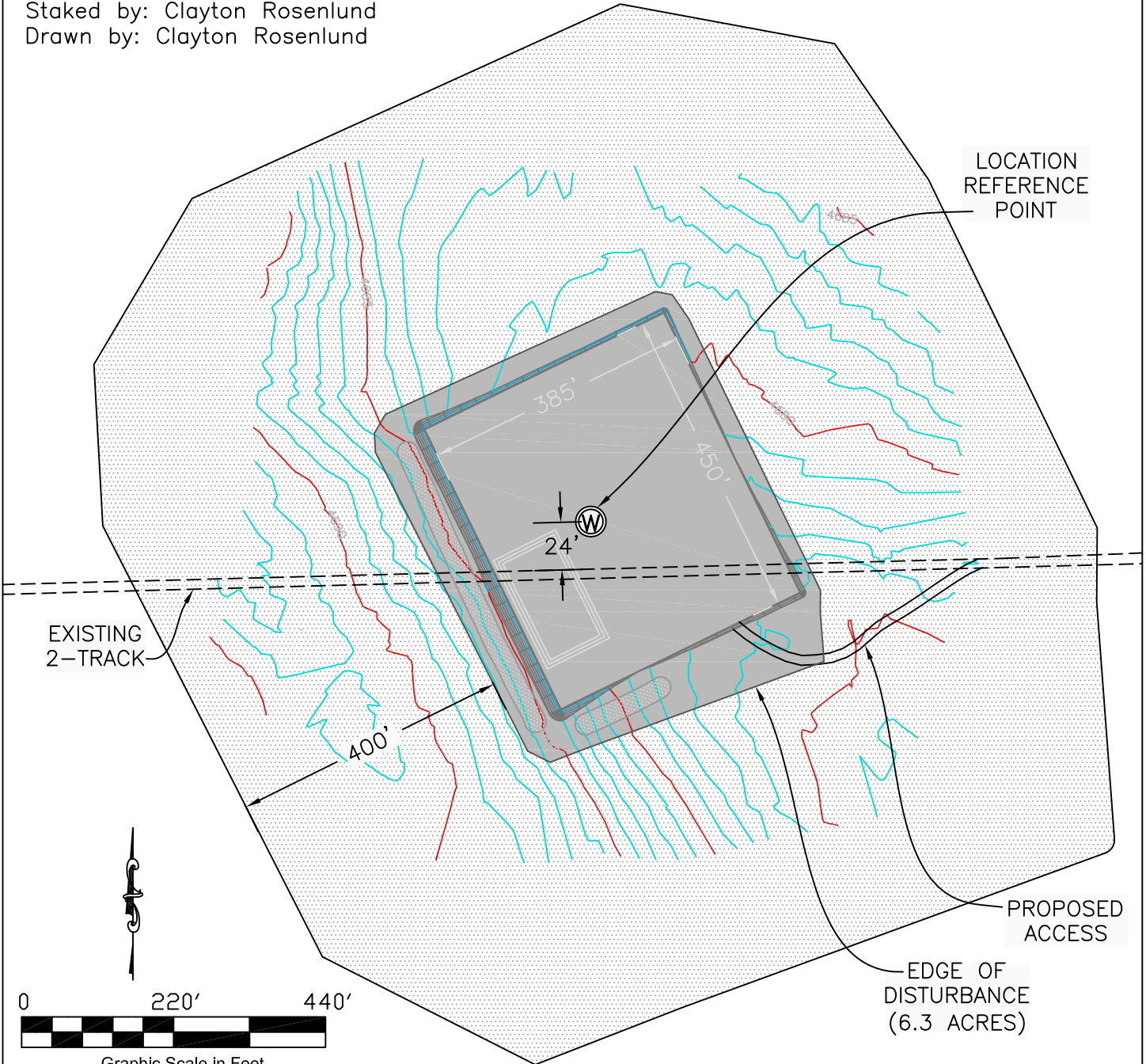
Location Drawing

Western Land Surveying of Sheridan, Wyoming, in accordance with a request from Rex Energy Rockies, LLC, has determined the location of Shapley #14-25H to be 661 feet FSL, and 664 feet FWL, (90° off Section Lines) of Section 25, Township 10 North, Range 57 West, of the 6th Principal Meridian, Weld County, Colorado.

Date: Staked on 6/10/2010, drawn on 6/18/2010, revised on 6/21/2010

Staked by: Clayton Rosenlund

Drawn by: Clayton Rosenlund




WESTERN LAND SERVICES
Sheridan, WY 82801 (307)673-1817

Rex Energy Rockies, LLC
Shapley #14-25H

SL: SW1/4 SW1/4 SECTION 25, T10N R57W
BL: SE1/4 SE1/4 SECTION 25, T10N R57W
6TH PM, WELD COUNTY, COLORADO