

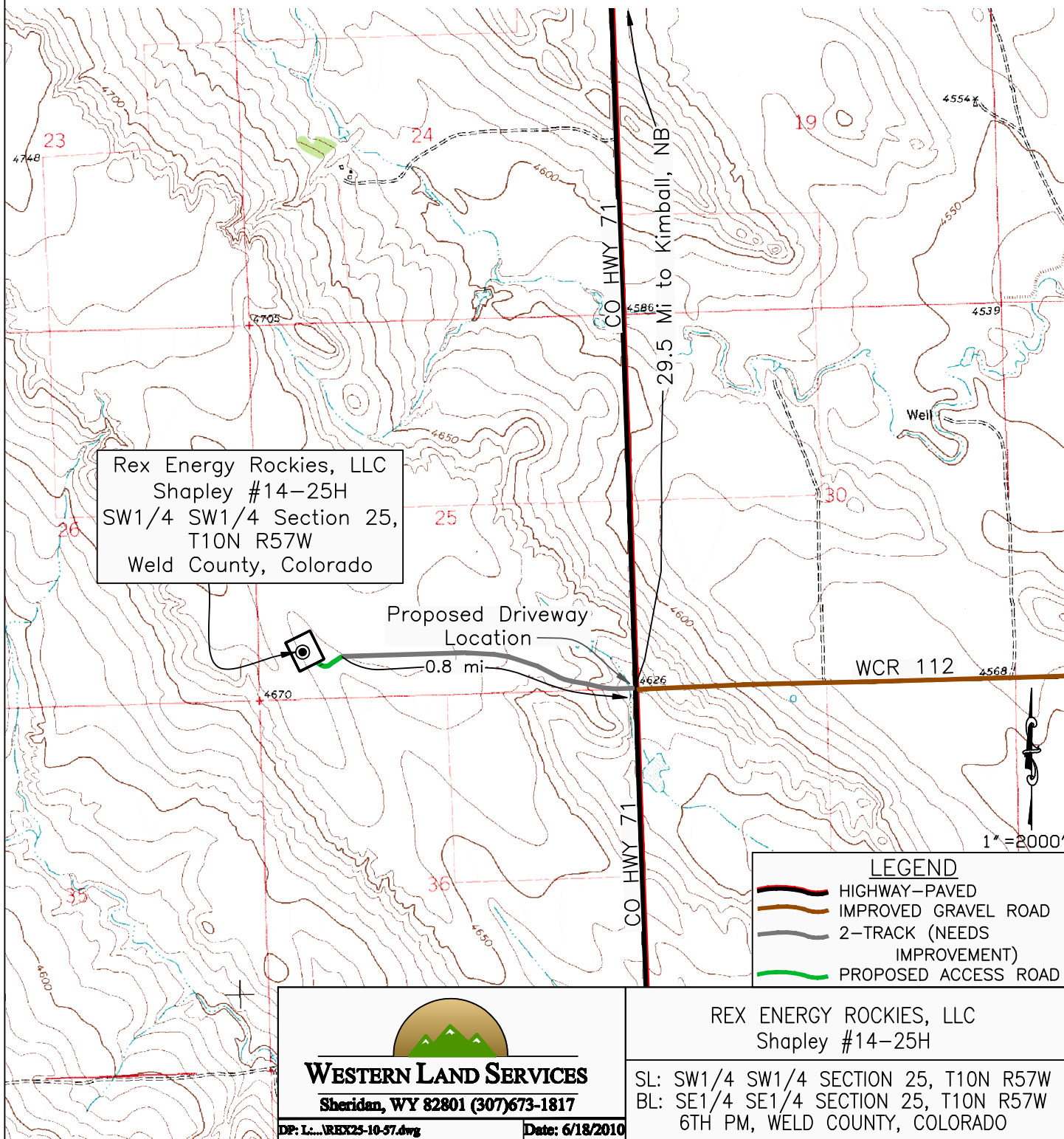
Access Road Map

Western Land Surveying of Sheridan, Wyoming, in accordance with a request from Rex Energy Rockies, LLC, has determined the location of Shapley #14-25H to be 661 feet FSL, and 664 feet FWL, (90° off Section Lines) of Section 25, Township 10N, Range 57W, of the 6th Principal Meridian, Weld County, Colorado.

Date: Staked on 6/10/2010, drawn on 6/18/2010, revised on 8/04/2010

Staked by: Clayton Rosenlund

Drawn by: Clayton Rosenlund



Rex Energy Rockies, LLC
Shapley #14-25H
SW1/4 SW1/4 Section 25,
T10N R57W
Weld County, Colorado

Proposed Driveway Location

0.8 mi

WCR 112

CO HWY 71

29.5 Mi to Kimball, NB

Well

LEGEND

- HIGHWAY—PAVED
- IMPROVED GRAVEL ROAD
- 2—TRACK (NEEDS IMPROVEMENT)
- PROPOSED ACCESS ROAD

1" = 2000'

WESTERN LAND SERVICES
Sheridan, WY 82801 (307)673-1817

REX ENERGY ROCKIES, LLC
Shapley #14-25H

SL: SW1/4 SW1/4 SECTION 25, T10N R57W
BL: SE1/4 SE1/4 SECTION 25, T10N R57W
6TH PM, WELD COUNTY, COLORADO