

**HALLIBURTON**

**EXXONMOBIL CORPORATION**

**HOUSTON, Texas**

FRU 197-33B7

**H&P 321**

## **Post Job Summary**

# **Cement Production Casing**

Prepared for: Alisha Collins  
Date Prepared: August 30, 2010  
Version: 1

Service Supervisor: ASHBY, ANDREW

Submitted by: Joshua Anglin

**HALLIBURTON**

# HALLIBURTON

## ***Wellbore Geometry***

Job Tubulars					MD		TVD		Excess %	Shoe Joint Length ft
Type	Description	Size in	ID in	Wt lbm/ft	Top ft	Bottom ft	Top ft	Bottom ft		
Casing	Intermediate Casing	7.00	6.276	26.00	0.00	8,483.00	0.00	8,424.00	0.00	80.00
Production Casing	Production Open Hole		6.125		8,483.00	12,296.00	8,424.00	12,200.00	350.00	0.00
Casing	Production Casing	4.50	3.826	15.10	0.00	12,296.00	0.00	12,200.00	0.00	87.01

## ***Pumping Schedule***

Stage /Plug #	Fluid #	Fluid Type	Fluid Name	Surface Density lbm/gal	Avg Rate bbl/min	Surface Volume	Downhole Volume
1	1	Spacer	TUNED SPACER III	10.00	4.00	40.0 bbl	40.0 bbl
1	2	Cement Slurry	Lightweight Lead Cement	10.50	4.00	213.0 sacks	213.0 sacks
1	3	Cement Slurry	Lightweight Tail Cement	12.00	4.00	687.0 sacks	687.0 sacks
1	4	Spacer	NaCl Displacement	8.44	2.00	174.0 bbl	174.0 bbl

# HALLIBURTON

## Fluids Pumped

---

**Stage/Plug # 1      Fluid 1:**    TUNED SPACER III  
TUNED SPACER III - SBM (483826)  
3 lbm/bbl    Fe-2  
59.8 lbm/bbl    Barite

Fluid Density: 10.00 lbm/gal  
Fluid Volume: 40.00 bbl  
Pump Rate: 4.00 bbl/min

**Stage/Plug # 1      Fluid 2:**    Lightweight Lead  
Cement  
TUNED LIGHT (TM) SYSTEM  
0.6 lbm    D-AIR 3000

Fluid Weight: 10.50 lbm/gal  
Slurry Yield: 2.37 ft<sup>3</sup>/sack  
Total Mixing Fluid: 10.11 Gal  
Surface Volume: 213.0 sacks  
Sacks: 213.0 sacks  
Calculated Fill: 3,888.17 ft  
Calculated Top of Fluid: 4,906.23 ft  
Estimated Top of Fluid:  
Pump Rate: 4.00 bbl/min

**Stage/Plug # 1      Fluid 3:**    Lightweight Tail  
Cement  
VARICEM (TM) CEMENT  
0.28 %    Fe-2

Fluid Weight: 12.00 lbm/gal  
Slurry Yield: 2.17 ft<sup>3</sup>/sack  
Total Mixing Fluid: 11.95 Gal  
Surface Volume: 687.0 sacks  
Sacks: 687.0 sacks  
Calculated Fill: 3,501.59 ft  
Calculated Top of Fluid: 8,794.41 ft  
Estimated Top of Fluid:  
Pump Rate: 4.00 bbl/min

**Stage/Plug # 1      Fluid 4:**    NaCl Displacement  
FLUSH / SPACER SBC MATERIAL  
7.15 lbm/bbl    Salt

Fluid Density: 8.44 lbm/gal  
Fluid Volume: 174.00 bbl  
Pump Rate: 2.00 bbl/min

# HALLIBURTON

## Lab Data

### HALLIBURTON Cementing Rockies, Meeker

#### LAB RESULTS - Lead

#### Job Information

Request/Slurry	93153/1	Rig Name	H&P 321	Date	August 7th 2010
Submitted By	Simukayi Mutasa	Job Type	Production Casing	Bulk Plant	Meeker
Customer	ExxonMobil	Location	Rio Blanco	Well	FRU 197-33B7

#### Well Information

Casing/Liner Size	4 1/2"	Depth MD	12458 ft	BHST	270 F
Hole Size	8 1/8"	Depth TVD	12399 ft	BHCT	210 F

#### Cement Information - Lead Design

Conc	UOM	Cement/Additive	Sample Type	Sample Date	Lot No.	Cement Properties	
		Tuned Light				Slurry Density	10.499 PPG
						Slurry Yield	2.37 FT3
						Water Requirement	10.11 GPS
100.00	% BWOC	Cement Blend					
19.5	%	> HGS 10000 dry blended	Bulk	Aug 20, 2010			
13	%	> Silicalite - Compacted	Bulk	Aug 20, 2010			
90	%	> TXI Lightweight	Bulk	Aug 20, 2010	08-10-10	Water Source	Field (Fresh) Water
0.10	lb/sk	CFR-3	Bulk	Aug 20, 2010	927233		
0.60	lb/sk	D-Air 3000	Bulk	Aug 20, 2010	2010179AC		
0.70	lb/sk	HALAD-344 (PB)	Bulk	Aug 20, 2010	ZM06004		
0.75	lb/sk	HR-601	Bulk	Aug 20, 2010	ZOHR01X2293JI		
94.37	L/100kg	Field (Fresh) Water	Lab	Jul 28, 2010	07-22-10		

#### Operation Test Results Request ID 93153/1

##### UCA Comp. Strength, Request Test ID:991575, Historical Data

End Temp (°F)	Pressure (psi)	50 psi (hh:mm)	500 psi (hh:mm)	12 hr CS (psi)	24 hr CS (psi)	48 hr CS (psi)	End CS (psi)	End Time (hrs)
242	3,000	05:20	05:42	1,244	1,181	1,172	1,193	72

##### Thickening Time, Request Test ID:991574, Historical Data

Temp (°F)	Pressure (psi)	Reached in (min)	Start BC	30 Bc (hh:mm)	40 Bc (hh:mm)	50 Bc (hh:mm)	70 Bc (hh:mm)	100 Bc (hh:mm)
210	8,299	61	10	05:03	05:04	05:08	05:10	05:17

##### Free Water, Request Test ID:991577, Historical Data

Test Temp (°F)	% FW 45 Inc
180	0

0 FW, 0 channeling, 0 settling.

##### API Rheology, Request Test ID:991576, Historical Data

Temp (°F)	600	300	200	100	60	30	6	3	Cond Time (min)	PV/YP
80	137	77	66	32	22	12	4	4	20	74.1 / 5.1

##### API Fluid Loss, Request Test ID:991578, Historical Data

Test Temp (°F)	Test Pressure (psi)	Test Time (min)	Meas. Vol (< 30 min, cc)	Extr. ISO FL (cc/30 min)
180	1,000	30	31	62

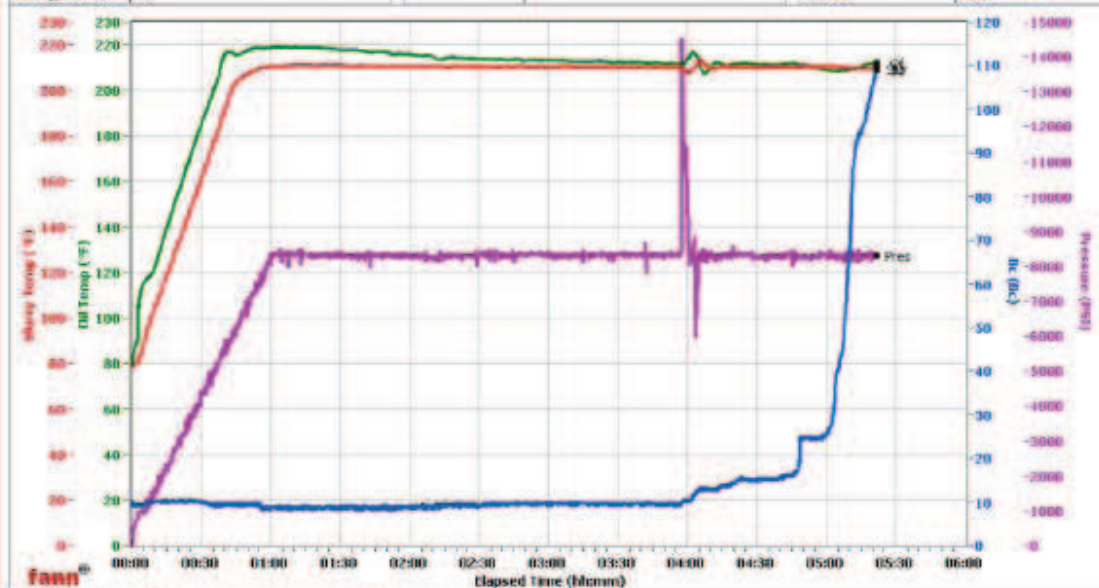
31 mL's in 30:00 mins.

This report is the property of Halliburton Energy Services and neither it nor any part thereof, nor a copy thereof, is to be published or disclosed without first securing the expressed written approval of Halliburton. It may however be used in the course of regular business operations by any person or concern receiving such report from Halliburton. This report is for information purposes only and the content is limited to the sample described. Halliburton makes no warranties, expressed or implied, as to the accuracy of the contents or results. Any user of this report agrees Halliburton shall not be liable for any loss or damage regardless of cause, including any act or omission of Halliburton, resulting from the use hereof.

# HALLIBURTON

## WRCR

Fields	Values	Fields	Values	Events	Results
Project Name	EconMobil 93153-1	Job Type	Prod Lead	30.00 Bc	05h:03m
Test ID	93153-1	Cement Type	T32	40.00 Bc	05h:04m
Request ID	HPHT 3	Cement Weight	Light Weight	50.00 Bc	05h:06m
Tested by	ac	Test Date	06/22/10	70.00 Bc	05h:10m
Customer	EconMobil	Test Time	09:38 PM	100.00 Bc	05h:17m
Well No	FRU 197-33B7	Temp. Units	degF	200.00 Bc	NaN
Rig	HBP 321	Pressure Units	PSI	03h:00m	5.63
Casing/Inner Size	4.5			06h:00m	NaN



Data File: O:\HPHT Data Files\WRCR\WRCR Consistometer #3\93153-1-1.dms

Comments: 90% T32, 0.750 HR-601, 2.37 Yield, 10.499 Den

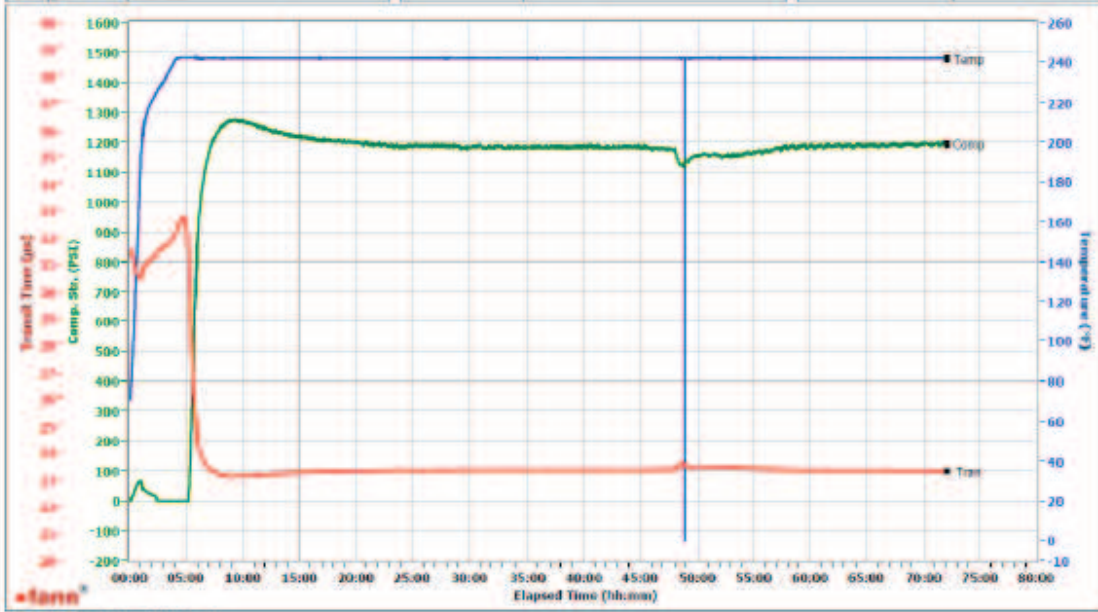
This report is the property of Halliburton Energy Services and neither it nor any part thereof, nor a copy thereof, is to be published or disclosed without first securing the expressed written approval of Halliburton. It may however be used in the course of regular business operations by any person or concern receiving such report from Halliburton. This report is for information purposes only and the content is limited to the sample described. Halliburton makes no warranties, expressed or implied, as to the accuracy of the contents or results. Any user of this report agrees Halliburton shall not be liable for any loss or damage regardless of cause, including any act or omission of Halliburton, resulting from the use hereof.



# HALLIBURTON

## White River City Ranch

Fields	Values	Fields	Values	Events	Results
Project Name	ExxonMobil 93150-1	Cement Type	TXJ	50.00 PSI	05h:20m
Test ID	93153-1	Cement Weight	Light Weight	100.00 PSI	05h:24m
Request ID	UCA 3	Comments	90% TXJ, 0.750 HR-601, 2.37 Yield, 10,490	500.00 PSI	05h:42m
Tested by	ac	Test Date	8/21/2010	1000.00 PSI	06h:17m
Customer	ExxonMobil	Test Time	9:30 AM	12h:00m	1244.24
Well No	PCU 197-33B7	Temp. Units	degF	24h:00m	1180.93
Rig	H&P 325	Pressure Units	PSI	48h:00m	1172.14
Casing/Liner Size	4.5			72h:00m	1193.49
Job Type	Prod Test				



Data File: C:\UCA Data\93150-1.tdms

This report is the property of Halliburton Energy Services and neither it nor any part thereof, nor a copy thereof, is to be published or disclosed without first securing the expressed written approval of Halliburton. It may however be used in the course of regular business operations by any person or concern receiving such report from Halliburton. This report is for information purposes only and the content is limited to the sample described. Halliburton makes no warranties, expressed or implied, as to the accuracy of the contents or results. Any user of this report agrees Halliburton shall not be liable for any loss or damage regardless of cause, including any act or omission of Halliburton, resulting from the use hereof.

# HALLIBURTON

## HALLIBURTON

### Cementing Rockies, Meeker

#### LAB RESULTS - Tail

#### Job Information

Request/Slurry	93152/1	Rig Name	H&P 321	Date	August 7th 2010
Submitted By	Simukayi Mutasa	Job Type	Production Casing	Bulk Plant	Meeker
Customer	ExxonMobil	Location	Rio Blanco	Well	FRU 197-33B7

#### Well Information

Casing/Liner Size	4 1/2"	Depth MD	12458 ft	BHST	270 F
Hole Size	6 1/8"	Depth TVD	12399 ft	BHCT	210 F

#### Cement Information - Tail Design

Cone	UOM	Cement/Additive	Sample Type	Sample Date	Lot No.	Cement Properties		
VariCem						Slurry Density	12.001	PPG
100.00	% BWOC	TXI Lightweight	Bulk	Aug 22, 2010	08-10-10	Slurry Yield	2.17	FT3
25.00	% BWOC	Silicalite - Compacted	Bulk	Aug 22, 2010	08-10-10	Water Requirement	11.95	GPS
0.60	% BWOC	HALAD-344 (PB)	Bulk	Aug 22, 2010	ZMOG004			
0.60	% BWOC	D-Air 3000	Bulk	Aug 22, 2010	2010179A C			
0.10	% BWOC	Econolite (Powder - PB)	Bulk	Aug 22, 2010	U031610			
0.28	% BWOC	Fe-2 (citric acid)	Bulk	Aug 22, 2010	CAOC162 B4			
132.94	L/100kg	Field (Fresh) Water	Lab	Jul 23, 2010	07-22-10	Water Source	Field (Fresh) Water	
						Water Chloride	N/A	ppm

#### Operation Test Results Request ID 93152/1

##### UCA Comp. Strength, Request Test ID:991569, Historical Data

End Temp (°F)	Pressure (psi)	50 psi (hh:mm)	500 psi (hh:mm)	12 hr CS (psi)	24 hr CS (psi)	48 hr CS (psi)	End CS (psi)	End Time (hrs)
242	3,000	06:17	06:42	889	975	1,034	1,071	72

##### Thickening Time, Request Test ID:991568, Historical Data

Temp (°F)	Pressure (psi)	Reached in (min)	Start BC	30 Bc (hh:mm)	40 Bc (hh:mm)	50 Bc (hh:mm)	70 Bc (hh:mm)	100 Bc (hh:mm)
210	8,299	61	1	03:36	03:46	03:54	03:59	04:05

##### Free Water, Request Test ID:991571, Historical Data

Test Temp (°F)	% FW 45 Inc
180	0

Trace FW, 0 channeling, 0 settling.

##### API Rheology, Request Test ID:991570, Historical Data

Temp (°F)	600	300	200	100	60	30	6	3	Cond Time (min)	PV/YP
80	43	24	18	10	6	5	2	2	20	22.3 / 2.4

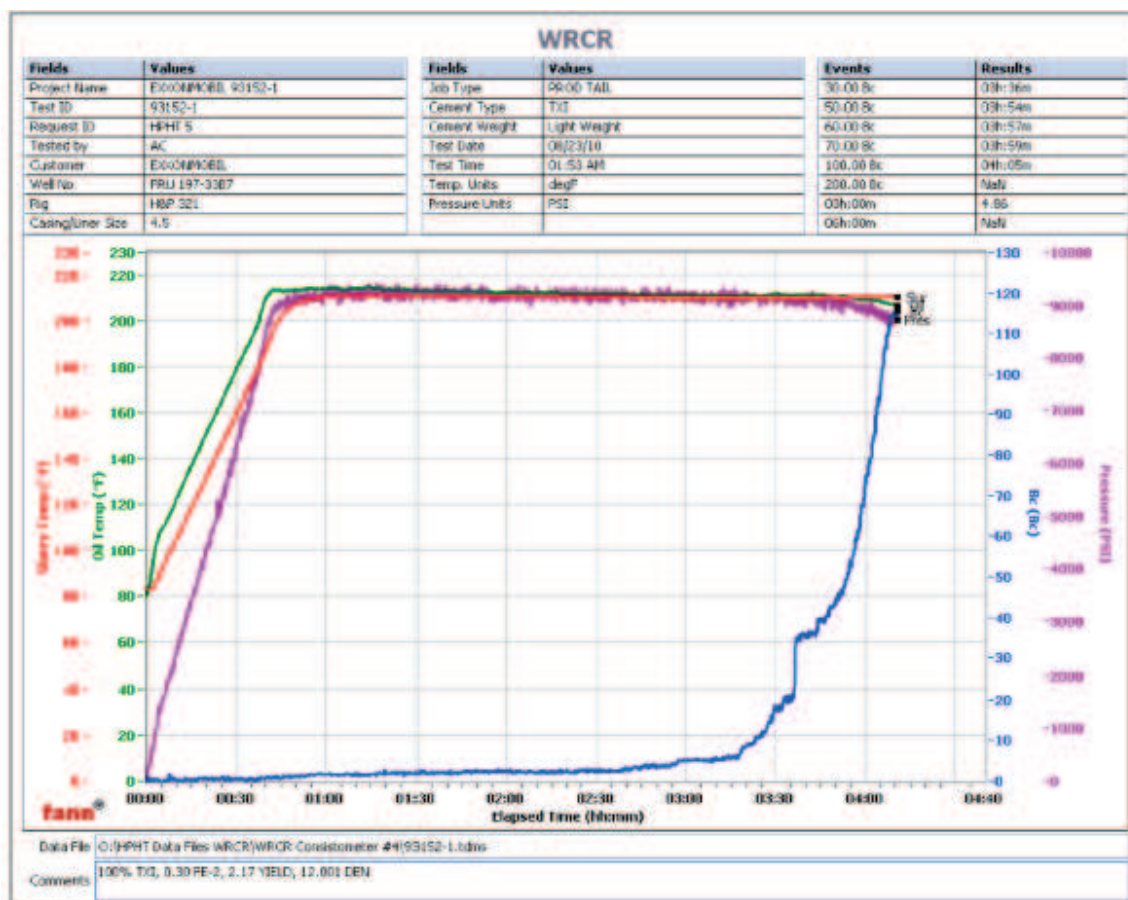
##### API Fluid Loss, Request Test ID:991572, Historical Data

Test Temp (°F)	Test Pressure (psi)	Test Time (min)	Meas. Vol (< 30 min, cc)	Extr. ISO FL (cc/30 min)
180	1,000	17.95	52	134

52 mL's in 17:57 mins.

This report is the property of Halliburton Energy Services and neither it nor any part thereof, nor a copy thereof, is to be published or disclosed without first securing the expressed written approval of Halliburton. It may however be used in the course of regular business operations by any person or concern receiving such report from Halliburton. This report is for information purposes only and the content is limited to the sample described. Halliburton makes no warranties, expressed or implied, as to the accuracy of the contents or results. Any user of this report agrees Halliburton shall not be liable for any loss or damage regardless of cause, including any act or omission of Halliburton, resulting from the use hereof.

# HALLIBURTON



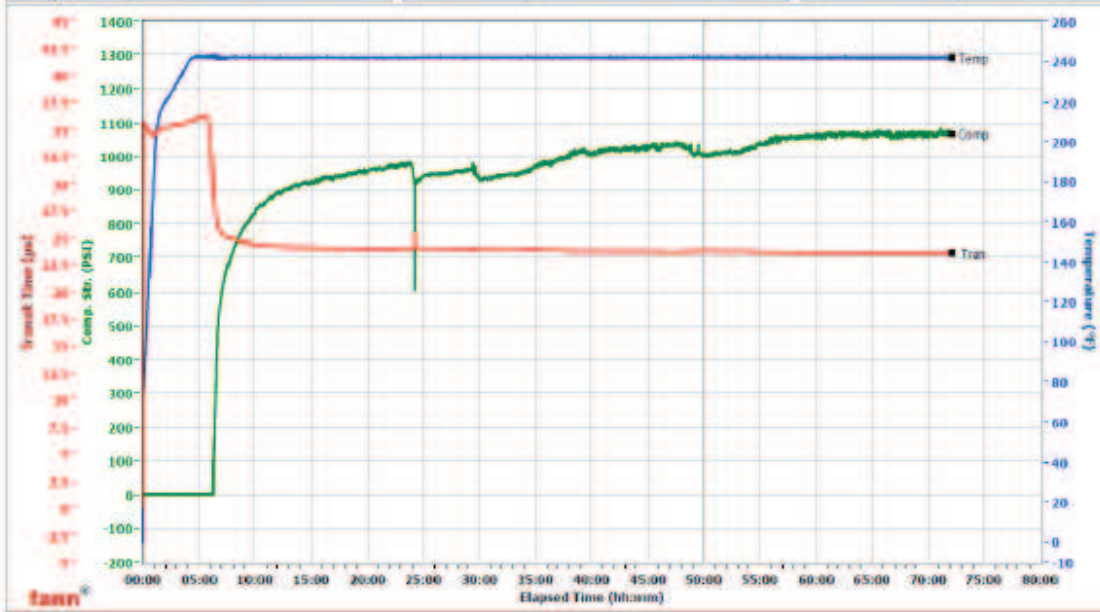
This report is the property of Halliburton Energy Services and neither it nor any part thereof, nor a copy thereof, is to be published or disclosed without first securing the expressed written approval of Halliburton. It may however be used in the course of regular business operations by any person or concern receiving such report from Halliburton. This report is for information purposes only and the content is limited to the sample described. Halliburton makes no warranties, expressed or implied, as to the accuracy of the contents or results. Any user of this report agrees Halliburton shall not be liable for any loss or damage regardless of cause, including any act or omission of Halliburton, resulting from the use hereof.



# HALLIBURTON

## White River City Ranch

Fields	Values	Fields	Values	Events	Results
Project Name	ExxonMobil 93152-1	Cement Type	TXJ	50.00 PSI	96h:17m
Test ID	93152-1	Cement Weight	Light Weight	100.00 PSI	96h:19m
Request ID	uca 5	Comments	100% TXJ, 0.300 Fe-2, 2.17 Yield, 12.004 On	500.00 PSI	96h:42m
Tested by	ac	Test Date	8/23/2010	1000.00 PSI	50h:21m
Customer	ExxonMobil	Test Time	9:38 AM	12h:00m	889.69
Well No	FRU 197-33B7	Temp. Units	degF	24h:00m	975.62
Rig	H&P 321	Pressure Units	PSI	40h:00m	1033.54
Casing/Line Size	4.5			72h:00m	1071.33
Job Type	Prod Tail				



Data File: C:\UCA Data\93152-1.htm

This report is the property of Halliburton Energy Services and neither it nor any part thereof, nor a copy thereof, is to be published or disclosed without first securing the expressed written approval of Halliburton. It may however be used in the course of regular business operations by any person or concern receiving such report from Halliburton. This report is for information purposes only and the content is limited to the sample described. Halliburton makes no warranties, expressed or implied, as to the accuracy of the contents or results. Any user of this report agrees Halliburton shall not be liable for any loss or damage regardless of cause, including any act or omission of Halliburton, resulting from the use hereof.

# HALLIBURTON

## Job Summary

---

### Job Information

Job Start Date	8/27/2010 11:07:00 AM
Job MD	12,296.0 ft
Job TVD	12,200.0 ft
Height of Plug Container/Swage Above Rig Floor	5.0 ft
Surface Temperature at Time of Job	80 degF
Mud Type	Water Based Mud
Name of Mud Company	BAROID
Actual Mud Density	10 lbm/gal
Mud PV	12 cP
Mud YP	14 lbs/100 ft2
10 sec/10 min/30 min Mud Gel Strength	7/15/22 lbs/100 ft2
Mud loss while running Casing	958.00 bbl
Time Circulated before job	1.03 hour(s)
Mud Volume Circulated	248.00 bbl
Rate at Which Well was Circulated	4.000 bbl/min
Mud loss while Circulating	166.00 bbl
Units of Gas Detected While Circulating	1900 API Gas Units
Pipe Movement During Hole Circulation	Reciprocated
Time From End Mud Circ. to Job Start	30.00 minute
Mud loss during Cement Job	395.00 bbl
Pipe Movement During Cementing	Reciprocated
Calculated Displacement	173.61 bbl
Job Displaced by (rig/halco)	Cement Unit HP Pumps
Annular flow Before Job? (Water/Gas)	Unknown
Annular flow After Job? (Water/Gas)	Unknown
Length of Rat Hole	12.00 ft

### Cementing Equipment

Number of Centralizers Used	146
Pipe Centralization	Through Entire Cement Column
Brand of Float Equipment Used	Weatherford
Did Float Equipment Hold?	Yes
Plug set used?	Yes
Brand of Plug set used?	Weatherford
Did Plugs Bump?	Yes
Calculated Pressure to Bump Plugs	2,283.3 psig

## Service Supervisor Reports

### Job Log

Date/Time	Chart #	Activity Code	Pump Rate	Cum Vol	Pump		Pressure (psig)	Comments
08/26/2010 21:00		Call Out						Crew Called out for Job. Plug Container#
08/26/2010 22:15		Pre-Convoy Safety Meeting						Met w/crew to discuss safety and hazards of travel to location
08/26/2010 22:30		Depart from Service Center or Other Site						Entered into Journey Management.
08/27/2010 02:45		Arrive At Loc						Ended Journey Management. Rig running casing - 29 joints left.
08/27/2010 03:00		Assessment Of Location Safety Meeting						Met w/crew to discuss hazards of site, location of materials and safety precautions.
08/27/2010 03:10		Other						Spot Equipment
08/27/2010 03:20		Pre-Rig Up Safety Meeting						Met w/crew to discuss the best way to rig up, safety and hazards involved.
08/27/2010 03:30		Rig-Up Equipment						Rig up Ground to red zone.
08/27/2010 10:00		Rig-Up Equipment						Rig-up the rig floor.
08/27/2010 10:20		Pre-Job Safety Meeting						Met w/Rig Crew, Co. Rep, and our crew to discuss job procedures. Company Man informed Halliburton that ExxonMobil may want to run LCM to help cure losses. Halliburton recommended to not run LCM in cement while running bottom plug.
08/27/2010 10:33		Other	2	2				Fill Lines with water
08/27/2010 10:36		Test Lines					374.0	Low Pressure Test (250 psi) - Lost 30 lbs in 5 min.
08/27/2010 10:43		Test Lines					5374.0	High Pressure Test (5000 psi) - Lost 69 lbs in 5 min.
08/27/2010 10:51		Pump Spacer	4	40			278.0	35 sks Tuned Spacer 10.0 ppg, 6.42 cuft/sk, 43.87 gps - mud scaled @ 10.05 ppg
08/27/2010 11:17		Shutdown						Shutdown / Drop Bottom Plug

# HALLIBURTON

Date/Time	Chart #	Activity Code	Pump Rate	Cum Vol	Pump		Pressure (psig)	Comments
08/27/2010 11:25		Pump Lead Cement	4	90			508.0	213 sks Tuned Light 10.5 ppg, 2.37 cuft/sk, 10.10 gps
08/27/2010 11:47		Pump Tail Cement	4	165.5			235.0	687 sks VeriCem 12.0 ppg, 2.17 cuft/sk, 11.91 gps
08/27/2010 11:53		Other						31 bbl gain on returns
08/27/2010 11:55		Slow Rate	3				114.0	Slow Rate per Co. Rep. request.
08/27/2010 12:15		Other	4				185.0	Increase Rate per Co. Rep. request.
08/27/2010 12:28		Other						Mud Scaled cement = 12.0 ppg
08/27/2010 12:54		Slow Rate	3				90.0	Slow Rate per Co. Rep. request.
08/27/2010 12:57		Shutdown						Shutdown / Drop Top Plug / Wash pump and lines to the pit.
08/27/2010 13:07		Pump Displacement	4	173.5				Water w/Salt (717 lbm/bbl) - No Returns
08/27/2010 13:22		Other	6				160.0	Increase Rate to catch pressure
08/27/2010 13:23		Slow Rate	3				80.0	Caught Cement, slow to 3 bpm per Co. Rep.
08/27/2010 13:29		Slow Rate	2				150.0	Slow rate to get a better lift pressure - per Co. Rep.
08/27/2010 14:13		Bump Plug	2				1900.0	Final Circulating Pressure = 1280 psi , bump plug 500 psi over per Co. Rep.
08/27/2010 14:18		Check Floats						Floats held - 1.5 bbls back - No Returns during Displacement
08/27/2010 14:20		End Job						Job Complete - "good job, A+ Performance"
08/27/2010 14:25		Post-Job Safety Meeting (Pre Rig-Down)						Met w/crew to discuss rigging down safely.
08/27/2010 14:30		Rig-Down Equipment						Rlg everything down.
08/27/2010 16:30		Pre-Convoy Safety Meeting						Met w/crew to discuss fit-for-duty, safety and hazards of travel back.
08/27/2010 16:45		Depart Location for Service Center or Other Site						Entered into Journey Management.
08/27/2010 16:45		Other						Thanks for using Halliburton!!!





## Cementing Job Summary

## *The Road to Excellence Starts with Safety*

<b>Sold To #:</b> 331699	<b>Ship To #:</b> 2765518	<b>Quote #:</b>	<b>Sales Order #:</b> 7582937
<b>Customer:</b> EXXONMOBIL CORPORATION		<b>Customer Rep:</b> Murawski, Victoria	
<b>Well Name:</b> FRU		<b>Well #:</b> 197-33B7	<b>API/UWI #:</b> 05-103-11420
<b>Field:</b>	<b>City (SAP):</b> MEEKER	<b>County/Parish:</b> Rio Blanco	<b>State:</b> Colorado
<b>Legal Description:</b> Section 6 Township 2S Range 96W			
<b>Job Purpose:</b> Cement Production Casing			
<b>Well Type:</b> Development Well		<b>Job Type:</b> Cement Production Casing	
<b>Sales Person:</b> TURNER, JAMIE		<b>Srvc Supervisor:</b> ASHBY, ANDREW	<b>MBU ID Emp #:</b> 450544

## Job Personnel

HES Emp Name	Exp Hrs	Emp #	HES Emp Name	Exp Hrs	Emp #	HES Emp Name	Exp Hrs	Emp #
ANDERSON, BENJAMIN L	14	342843	ANGLIN, JOSHUA B	14	462343	ASHBY, ANDREW A	14	450544
MCCONKIE, TRAVIS Terry	14	471264	PARTRIDGE, BRENT W	14	471227	SMITH, KC Hyrum	14	462378
SPENCER, WESTON Chad	14	391271	WALKER, DERRICK	14	267871	WILLIAMS, CAMERON Kent	14	438405

## Equipment

HES Unit #	Distance-1 way	HES Unit #	Distance-1 way	HES Unit #	Distance-1 way	HES Unit #	Distance-1 way
10867527	45 mile	10948685	45 mile	10948690	45 mile	11019277	45 mile
11023106	45 mile	11062230	45 mile	11076824	45 mile	11127525	45 mile
11189139	45 mile	11263210	45 mile	11305357	45 mile	11338211	45 mile

## Job Hours

Date	On Location Hours	Operating Hours	Date	On Location Hours	Operating Hours	Date	On Location Hours	Operating Hours
8/27/2010	14	4						
<b>TOTAL</b>	<b>OLH: 14 OH:4</b>			Total is the sum of each column separately				

Job					Job Times			
Formation Name						Date	Time	Time Zone
Formation Depth (MD)	Top		Bottom		Called Out	26 - Aug - 2010	21:00	MST
Form Type			BHST	270 degF	On Location	27 - Aug - 2010	02:45	MST
Job depth MD	12296. ft		Job Depth TVD	12200. ft	Job Started	27 - Aug - 2010	11:07	MST
Water Depth			Wk Ht Above Floor	5. ft	Job Completed	27 - Aug - 2010	14:13	MST
Perforation Depth (MD)	From		To		Departed Loc	27 - Aug - 2010	16:45	MST

## Well Data

<i>Description</i>	<b>New / Used</b>	<b>Max pressure psig</b>	<b>Size in</b>	<b>ID in</b>	<b>Weight lbm/ft</b>	<b>Thread</b>	<b>Grade</b>	<b>Top MD ft</b>	<b>Bottom MD ft</b>	<b>Top TVD ft</b>	<b>Bottom TVD ft</b>
Production Open Hole	Used			6.125				8483.	12296.	8424.	12200.
Intermediate Casing	Unknown		7.	6.276	26.	HYDRIL - SERIES 500 TYPE 513	P-110	.	8483.	.	8424.
Production Casing	Unknown		4.5	3.826	15.1	LTC	P-110	.	12296.	.	12200.

## Tools and Accessories

Type	Size	Qty	Make	Depth	Type	Size	Qty	Make	Depth	Type	Size	Qty	Make
Guide Shoe	4.5	1	WEAT		Packer					Top Plug	4.5	1	WEATH
Float Shoe					Bridge Plug					Bottom Plug	4.5	1	WEATH
Float Collar	4.5	2	WEAT		Retainer					SSR plug set			
Insert Float										Plug Container	4.5	1	HALLI
Stage Tool										Centralizers	5.75	146	

Summit  
Version:

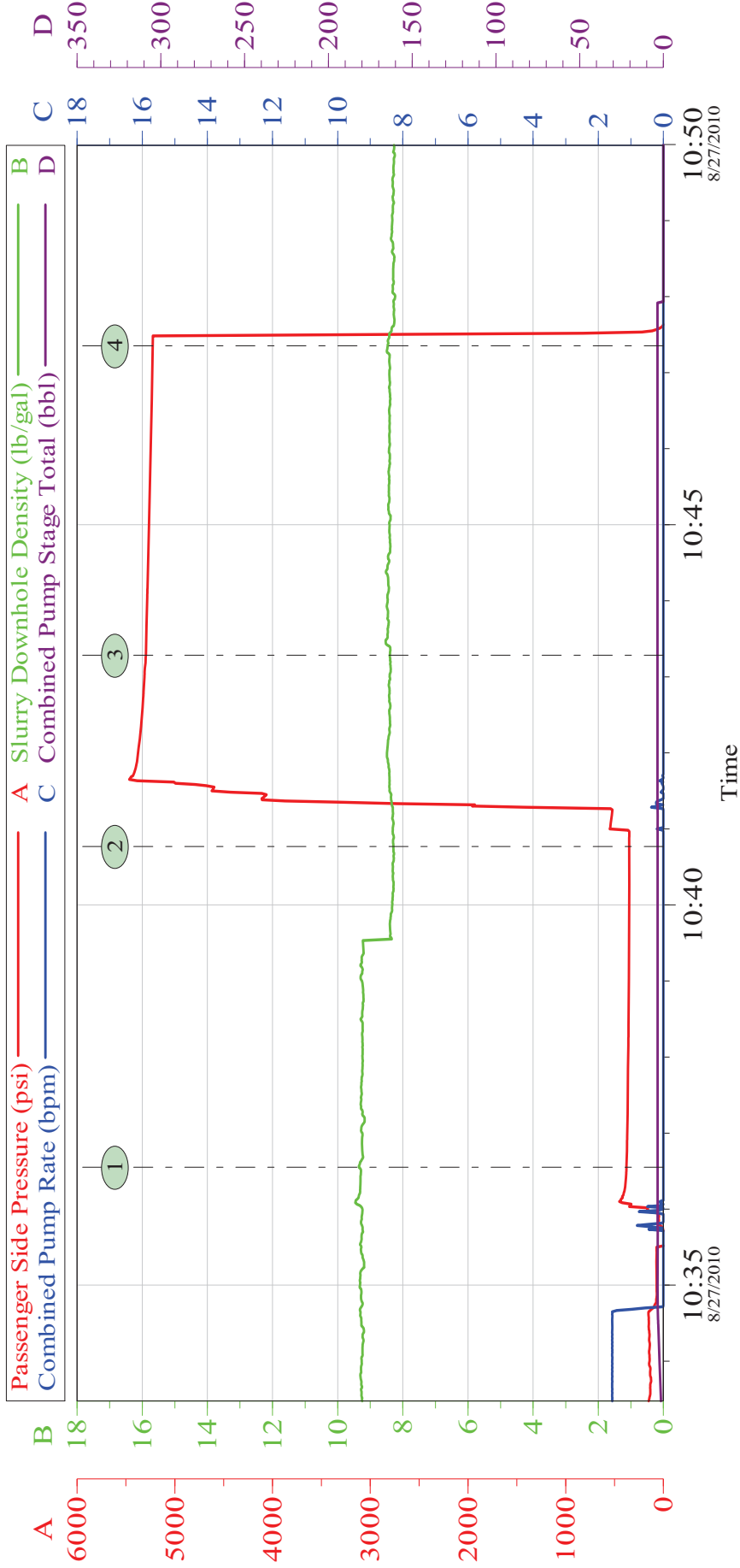
Monday, August 30, 2010 17:45:00

Miscellaneous Materials													
Gelling Agt		Conc		Surfactant		Conc		Acid Type		Qty		Conc	%
Treatment Fld		Conc		Inhibitor		Conc		Sand Type		Size		Qty	
Fluid Data													
Stage/Plug #: 1													
Fluid #	Stage Type	Fluid Name			Qty	Qty uom	Mixing Density lbm/gal	Yield ft <sup>3</sup> /sk	Mix Fluid Gal/sk	Rate bbl/min	Total Mix Fluid Gal/sk		
1	TUNED SPACER III	TUNED SPACER III - SBM (483826)			40.00	bbl	10.	.0	.0	6.0			
	38.32 gal/bbl	FRESH WATER											
	3 lbm/bbl	FE-2 (100001615)											
	59.8 lbm/bbl	BARITE, 100 LB SK (100003680)											
2	Lightweight Lead Cement	TUNED LIGHT (TM) SYSTEM (452984)			213.0	sacks	10.5	2.37	10.11	6.0	10.11		
	0.6 lbm	D-AIR 3000 (101007446)											
	10.11 Gal	FRESH WATER											
3	Lightweight Tail Cement	VARICEM (TM) CEMENT (452009)			687.0	sacks	12.	2.17	11.95	6.0	11.95		
	11.95 Gal	FRESH WATER											
	0.28 %	FE-2 (100001615)											
4	NaCl Displacement				174.00	bbl	8.44	.0	.0	6.0			
	7.15 lbm/bbl	SALT, 100 LB BAG (100003652)											
Calculated Values			Pressures			Volumes							
Displacement	173	Shut In: Instant				Lost Returns	395	Cement Slurry		355	Pad		
Top Of Cement	4913	5 Min				Cement Returns	0	Actual Displacement		170	Treatment		
Frac Gradient		15 Min				Spacers	40	Load and Breakdown			Total Job		
Rates													
Circulating	4	Mixing		4		Displacement	2		Avg. Job		3.3		
Cement Left In Pipe	Amount	87.01 ft	Reason	Shoe Joint									
Frac Ring # 1 @	ID	Frac ring # 2 @	ID	Frac Ring # 3 @	ID	Frac Ring # 4 @	ID						
The Information Stated Herein Is Correct					Customer Representative Signature								

Data Acquisition

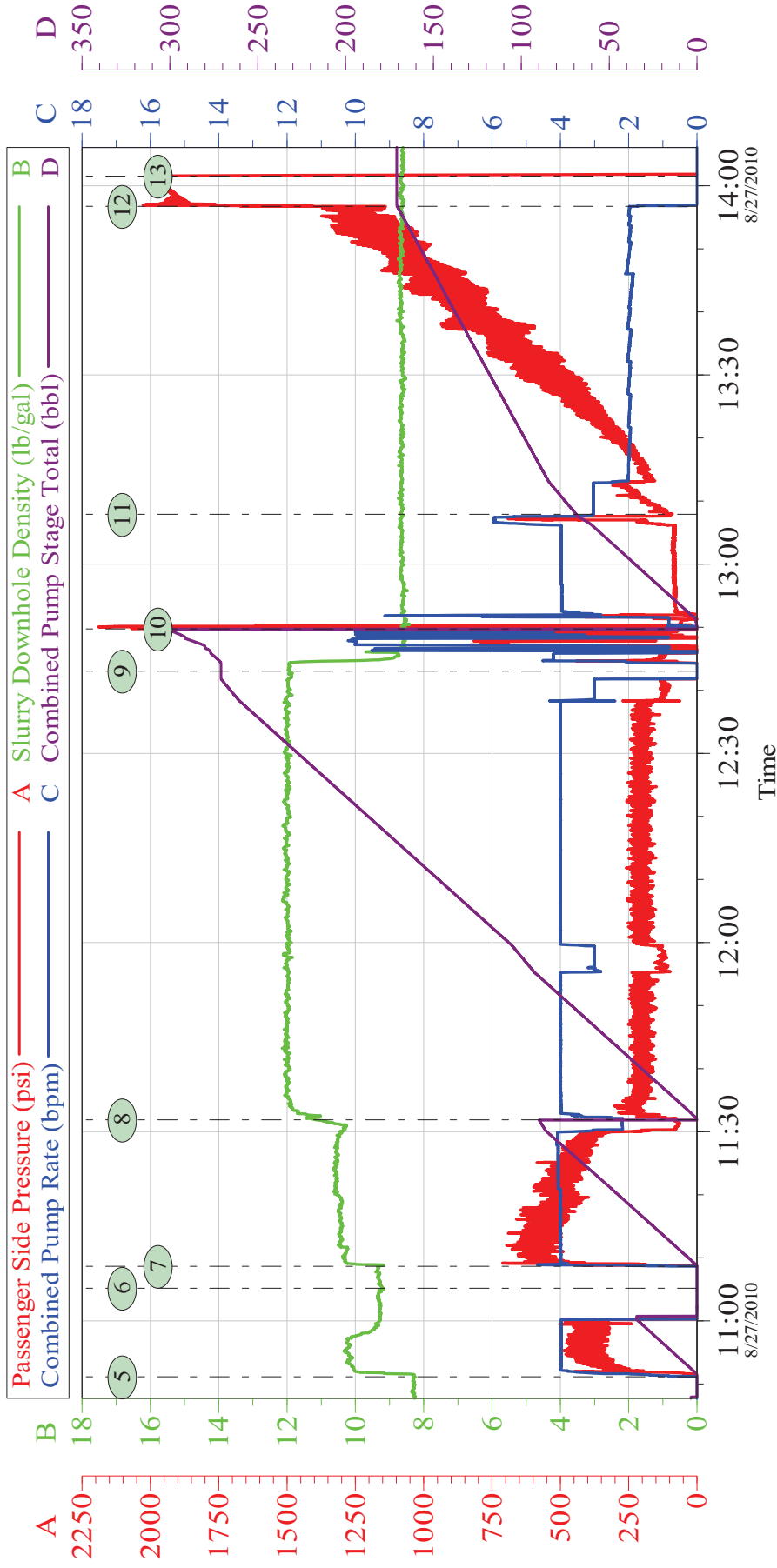
XOM FRU 197-33B7 4.5" Production Cement Job

Pressure Test



Customer: EXXONMOBIL	Job Date: 27-Aug-2010	Sales Order #: 7582933
Well Description: PCU 297-11C6	UWI: 05-103-11472	

XOM FRU 197-33B7 4.5" Production Cement Job  
Job Chart



5	Pump Spacer	10:51:06	6	Drop Bottom Plug	11:05:09	7	Pump Lead Cement	11:08:38
8	Pump Tail Cement	11:31:51	9	Drop Top Plug	12:43:02	10	Pump Displacement	12:49:43
11	Caught Cement	13:07:53	12	Bump Plug	13:56:44	13	Check Floats	14:01:32

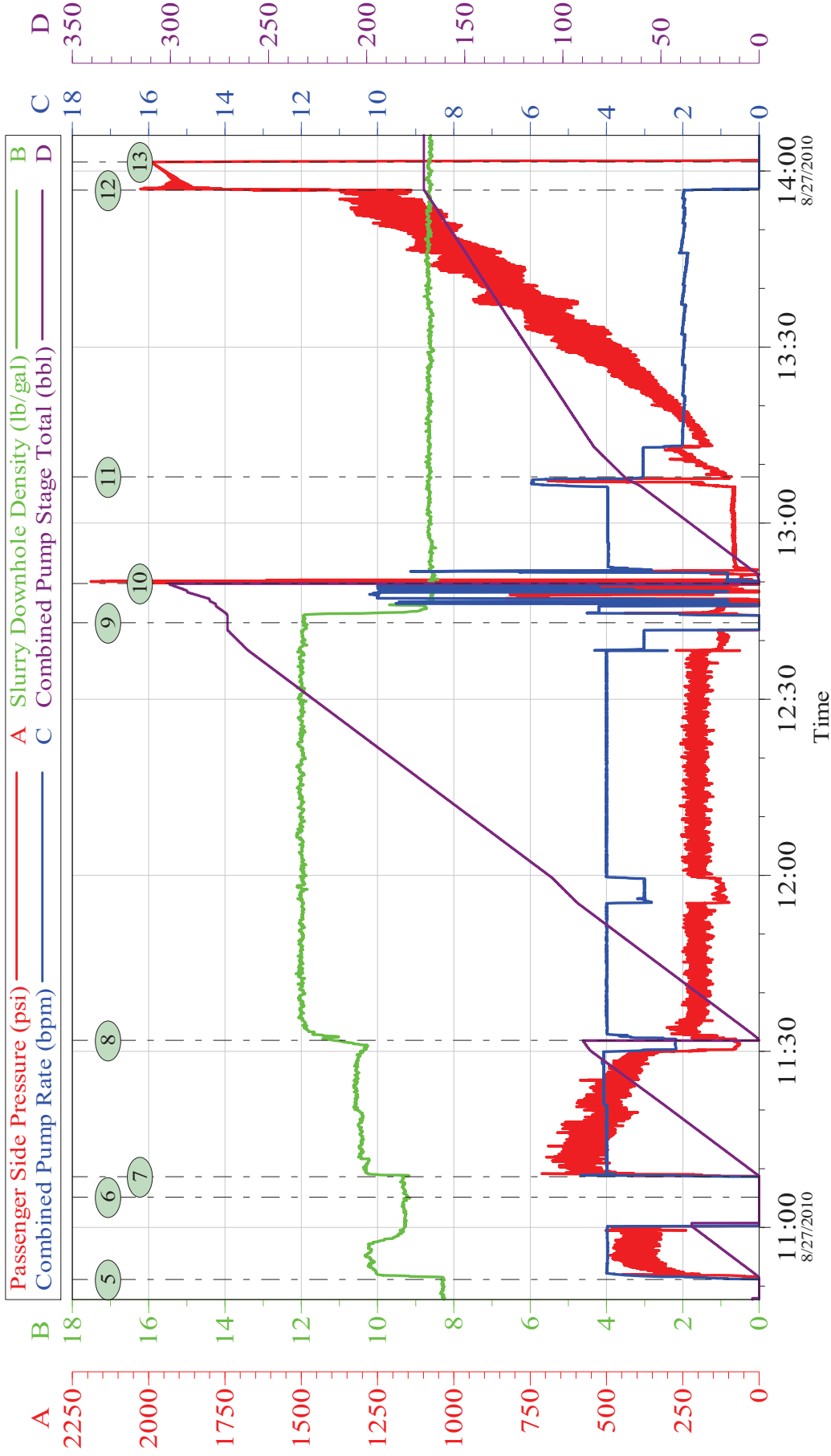
Customer:	EXXONMOBIL	Job Date:	27-Aug-2010	Sales Order #:	7582933
Well Description:	PCU 297-11C6	UWI:	05-103-11472		

OptiCem v6.4.9  
27-Aug-10 15:35



XOM FRU 197-33B7 4.5" Production Cement Job

Job Chart



Customer: EXXONMOBIL	Job Date: 27-Aug-2010	Sales Order #: 7582933
Well Description: PCU 297-11C6	UWI: 05-103-11472	