

T6S, R95W, 6th P.M.

WILLIAMS PRODUCTION RMT COMPANY

Well location, FEDERAL PA 431-29 (TARGET BOTTOM HOLE), located as shown in Lot 2 of Section 20, T6S, R95W, 6th P.M., Garfield County, Colorado.

BASIS OF ELEVATION

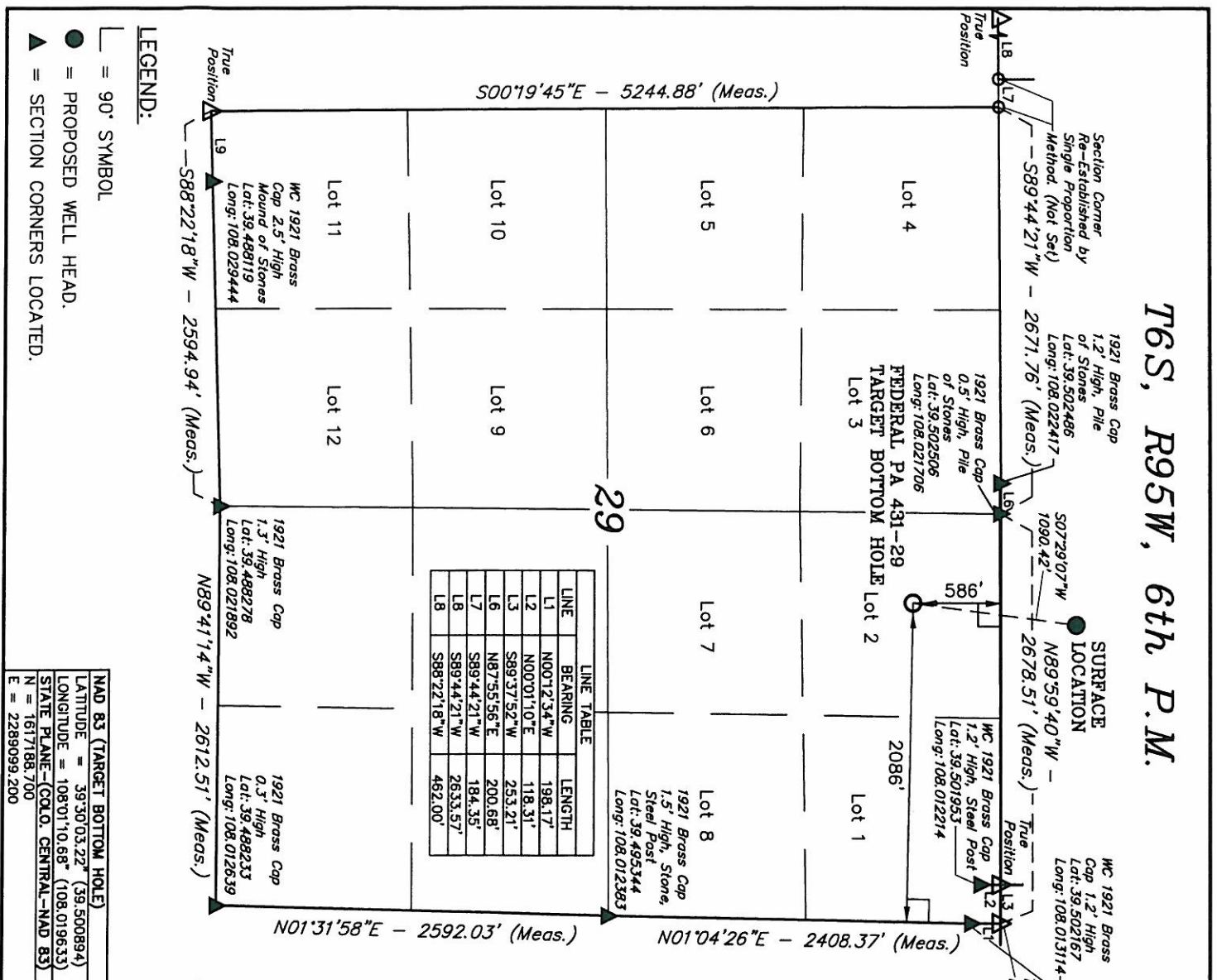
SPOT ELEVATION AT THE NORTHWEST CORNER OF SECTION 30, T5S, R95W, 6th P.M. TAKEN FROM THE FORGED GULCH QUADRANGLE, COLORADO, GARFIELD COUNTY, 7.5 MINUTE SERIES (TOPOGRAPHICAL MAP) PUBLISHED BY THE UNITED STATES DEPARTMENT OF THE INTERIOR, GEOLOGICAL SURVEY. SAID ELEVATION IS MARKED AS BEING 5966 FEET.

BASIS OF BEARINGS

BASIS OF BEARINGS IS A G.P.S. OBSERVATION.

NOTE:
SEE CURRENT FOOTAGE PLAT #6 FOR EXISTING IMPROVEMENT WITHIN 400' OF THE PROPOSED WELL DISTURBANCE.

PLAT #1



LINE	BEARING	LENGTH
L1	N00°12'34"W	198.17'
L2	N00°01'10"E	118.31'
L3	S89°37'52"W	253.21'
L6	N87°55'56"E	200.68'
L7	S89°44'21"W	184.35'
L8	S89°44'21"W	263.57'
L8	S88°22'18"W	482.00'

NAD 83 (TARGET BOTTOM HOLE)	
LATITUDE =	39°30'03.22" (39.500894)
LONGITUDE =	108°01'10.68" (108.019633)
STATE PLANE—COLO. CENTRAL—NAD 83	
N =	1617188.700
E =	2289099.200

Revised: 10-06-10 D.R.B.

UINTAH ENGINEERING & LAND SURVEYING

85 SOUTH 200 EAST - VERNAL, UTAH 84078

(435) 789-1017

SCALE: 1" = 1000'

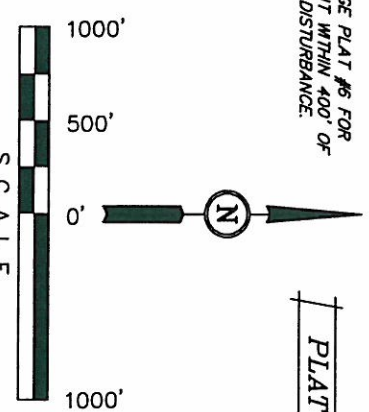
PARTY	B.H.	B.B.	D.R.B.
WEATHER	COOL	FILE	WILLIAMS PRODUCTION RMT COMPANY

DATE SURVEYED:	05-17-10	DATE DRAWN:	06-12-10
REFERENCES	G.L.O. PLAT		

THIS IS TO CERTIFY THAT THE ABOVE PLAT WAS PREPARED FROM FIELD NOTES OF ACTUAL SURVEYS MADE BY ME OR UNDER MY SUPERVISION AND THAT THE SAME ARE TRUE AND CORRECT TO THE BEST OF MY KNOWLEDGE AND BELIEF.

SCALES CERTIFICATE

REGISTERED LAND SURVEYOR
REGISTRATION NO. 17432
STATE OF COLORADO



- LEGEND:**
- 90° SYMBOL
 - = PROPOSED WELL HEAD.
 - ▲ = SECTION CORNERS LOCATED.