



T6S, R95W, 6th P.M.

WILLIAMS PRODUCTION RMT COMPANY

Well location, FEDERAL PA 621-29 (TARGET BOTTOM HOLE), located as shown in Lot 3 of Section 20, T6S, R95W, 6th P.M., Garfield County, Colorado.

### BASIS OF ELEVATION

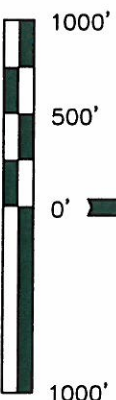
SPOT ELEVATION AT THE NORTHWEST CORNER OF SECTION 30, T5S, R95W, 6th P.M. TAKEN FROM THE FORCED GULCH QUADRANGLE, COLORADO, GARFIELD COUNTY, 7.5 MINUTE SERIES (TOPOGRAPHICAL MAP) PUBLISHED BY THE UNITED STATES DEPARTMENT OF THE INTERIOR, GEOLOGICAL SURVEY. SAID ELEVATION IS MARKED AS BEING 5966 FEET.

### BASIS OF BEARINGS

BASIS OF BEARINGS IS A G.P.S. OBSERVATION.

NOTE:  
SEE CURRENT FOOTAGE PLAT #6 FOR  
EXISTING IMPROVEMENT WITHIN 400' OF  
THE PROPOSED WELL DISTURBANCE.

PLAT #1



SCALE  
CERTIFICATE

THIS IS TO CERTIFY THAT THE ABOVE PLAT WAS PREPARED FROM  
FIELD NOTES OF ACTUAL SURVEYS MADE BY ME OR UNDER MY  
SUPERVISION AND THAT THE SAME ARE TRUE AND CORRECT TO THE  
BEST OF MY KNOWLEDGE AND BELIEF.

REGISTERED LAND SURVEYOR  
REGISTRATION NO. 17492  
STATE OF COLORADO

Revised: 10-06-10 D.R.B.

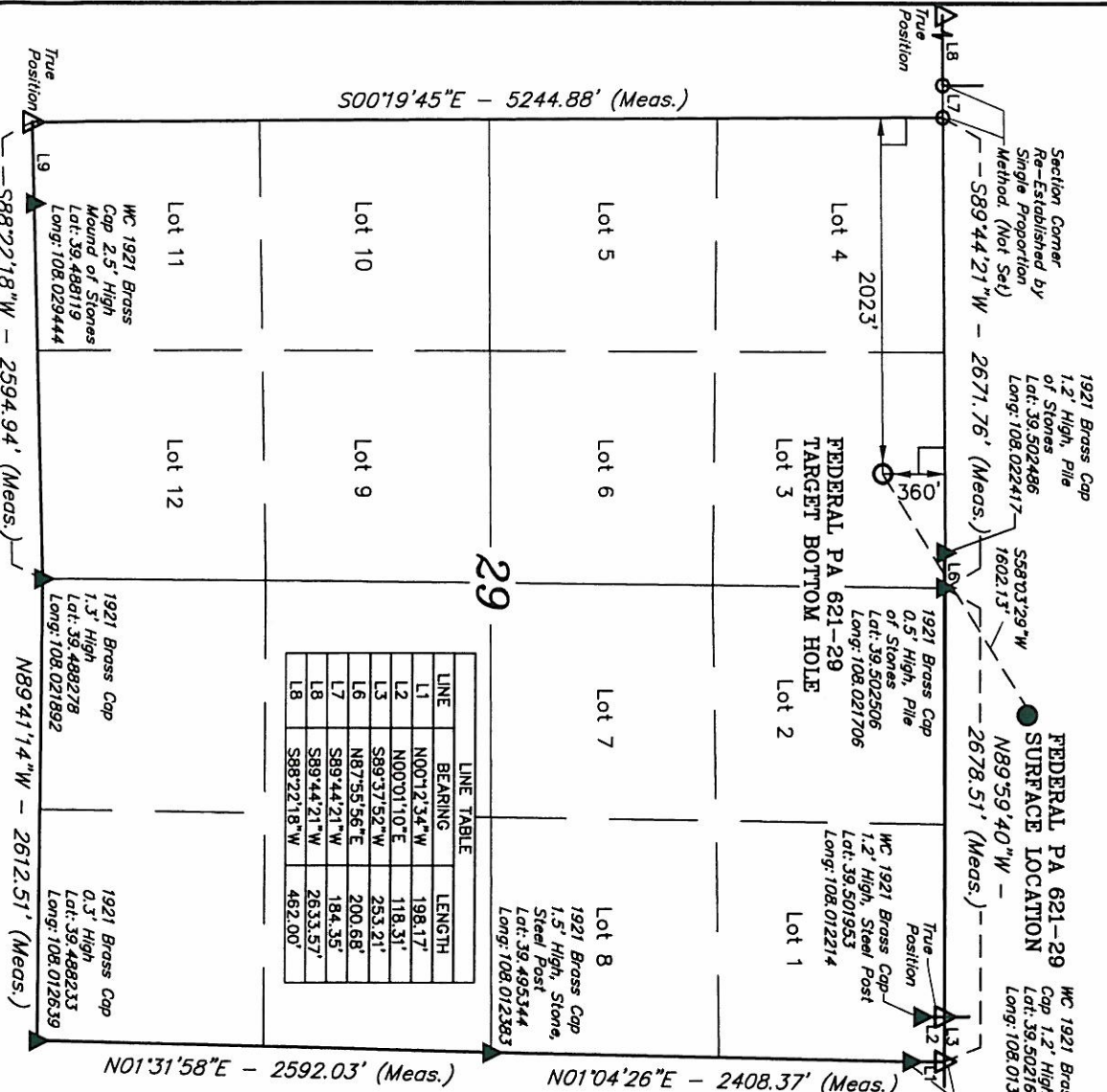
UNTAH ENGINEERING & LAND SURVEYING  
85 SOUTH 200 EAST - VERNAL, UTAH 84078  
(435) 789-1017

SCALE  
1" = 1000'  
PARTY  
B.H. B.B. D.R.B. REFERENCES  
G.L.O. PLAT  
WEATHER  
COOL  
FILE  
WILLIAMS PRODUCTION RMT COMPANY

### LEGEND:

- 90° SYMBOL
- PROPOSED WELL HEAD.
- SECTION CORNERS LOCATED.

NAD 83 (TARGET BOTTOM HOLE)  
LATITUDE = 39°30'05.44" (39.501511)  
LONGITUDE = 108°01'26.39" (108.023997)  
STATE PLANE--COLO. CENTRAL--NAD 83  
N = 1617446.900  
E = 2287874.300



LINE	BEARING	LENGTH
L1	N00°12'34\"W	198.17'
L2	N00°01'10\"E	118.31'
L3	S89°37'52\"W	253.21'
L6	N87°55'56\"E	200.68'
L7	S89°44'21\"W	184.35'
L8	S89°44'21\"W	263.57'
L8	S88°22'18\"W	462.00'