

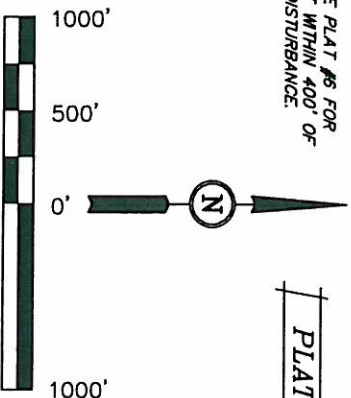
WILLIAMS PRODUCTION RMT COMPANY

SPOT ELEVATION AT THE NORTHWEST CORNER OF SECTION 30, T5S, R95W, 6th P.M. TAKEN FROM THE FORKED GULCH QUADRANGLE, COLORADO, GARFIELD COUNTY, 7.5 MINUTE SERIES (TOPOGRAPHICAL MAP) PUBLISHED BY THE UNITED STATES DEPARTMENT OF THE INTERIOR, GEOLOGICAL SURVEY. SAID ELEVATION IS MARKED AS BEING 5966 FEET.

BASIS OF BEARINGS IS A G.P.S. OBSERVATION.

PLAT #1

LINE TABLE		
LINE	BEARING	LENGTH
L1	N0012.34°W	198.17'
L2	N0010°10'E	118.31'
L3	S89°31.52°W	253.21'
L4	N00005.21°E	66.00'
L5	S89°57.16°W	66.00'
L6	N87°55.66°E	200.66'
L7	S89.44°21°W	184.53'
L8	S89.44°21°W	263.57'



SCALE
CERTIFICATE

THIS IS TO CERTIFY THAT THE ABOVE PLAY WAS PREPARED FROM FIELD NOTES OF ACTUAL SURVEYS MADE BY ME OR UNDER MY SUPERVISION AND THAT THE SAME ARE TRUE AND CORRECT TO THE BEST OF MY KNOWLEDGE AND BELIEF.

Revised: 10-06-10 D.R.B.

MC 1921 Brass
Cap 1.2" High
Lot: 39,502167
Date: 108.013114

UNTAH ENGINEERING & LAND SURVEYING

85 SOUTH 200 EAST - VERNAL, UTAH 84078

(435) 789-1017

 $1'' = 1000'$

DATE SURVEYED:	DATE DRAWN:
05-17-10	06-13-10

[illegible]

0317

01-71-00

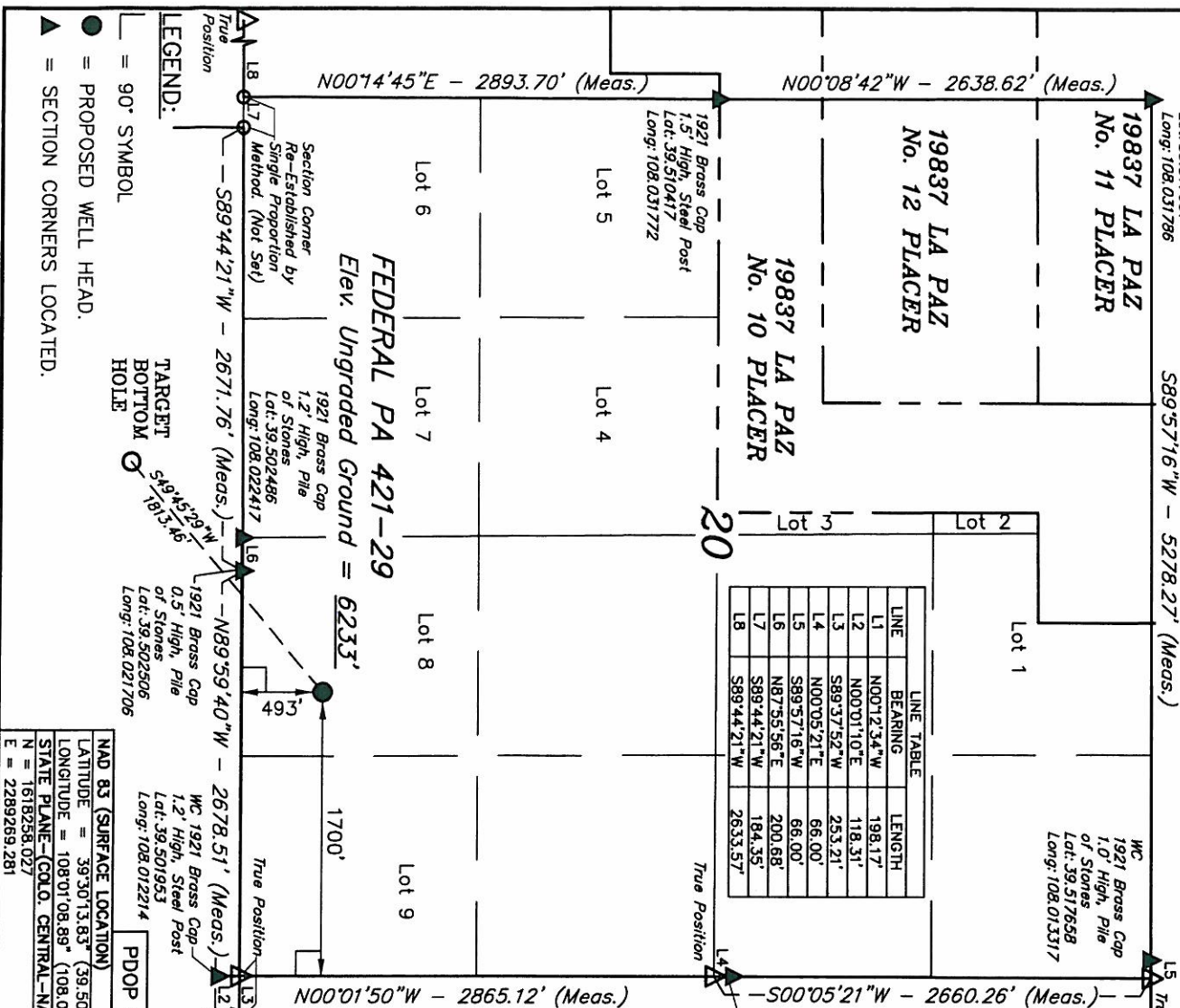
PARTY	REFERENCES
B.H.	G.I.O. PLAT
B.B.	
D.R.B.	

WEATHER

File

COOL

WILLIAMS PRODUCTION RMT COMPANY



LEGEND:

$\angle = 90^\circ$ SYMBOL

● = PROPOSED WELL HEAD.

SECTION CORNERS LOCATED

U.S. High/L. File
of Stones
Lat: 39.502506
Long: 108.021706

Long: 108.012214

PDOP = 2.4

PDOP = 2.4

SCALE 1" = 1000'

DATE SURVEYED:

DATE DRAWN:

T6S, R95W, 6th P.M.

WILLIAMS PRODUCTION RMT COMPANY

Well location, FEDERAL PA 421-29 (TARGET BOTTOM HOLE), located as shown in Lot 3 of Section 20, T6S, R95W, 6th P.M., Garfield County, Colorado.

BASIS OF ELEVATION

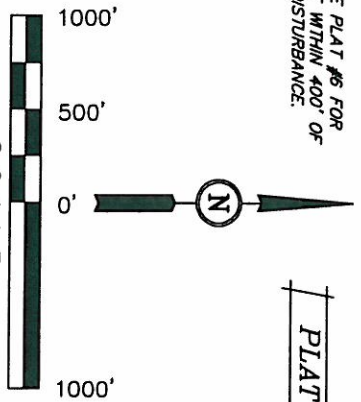
SPOT ELEVATION AT THE NORTHWEST CORNER OF SECTION 30, T5S, R95W, 6th P.M. TAKEN FROM THE FORKED GULCH QUADRANGLE, COLORADO, GARFIELD COUNTY, 7.5 MINUTE SERIES (TOPOGRAPHICAL MAP) PUBLISHED BY THE UNITED STATES DEPARTMENT OF THE INTERIOR, GEOLOGICAL SURVEY. SAID ELEVATION IS MARKED AS BEING 5966 FEET.

BASIS OF BEARINGS

BASIS OF BEARINGS IS A G.P.S. OBSERVATION.

NOTE:
SEE CURRENT FOOTAGE PLAT #6 FOR
EXISTING IMPROVEMENT WITHIN 400' OF
THE PROPOSED WELL DISTURBANCE.

PLAT #1



CERTIFICATE

THIS IS TO CERTIFY THAT THE ABOVE PLAT WAS PREPARED FROM FIELD NOTES OF ACTUAL SURVEYS MADE BY ME OR UNDER MY SUPERVISION AND THAT THE SAME ARE TRUE AND CORRECT TO THE BEST OF MY KNOWLEDGE AND BELIEF.

REGISTERED LAND SURVEYOR
STATE OF COLORADO
NO. 17432
JULY 1993

Revised: 10-06-10 D.R.B.

UINTAH ENGINEERING & LAND SURVEYING

85 SOUTH 200 EAST - VERNAL, UTAH 84078

(435) 789-1017

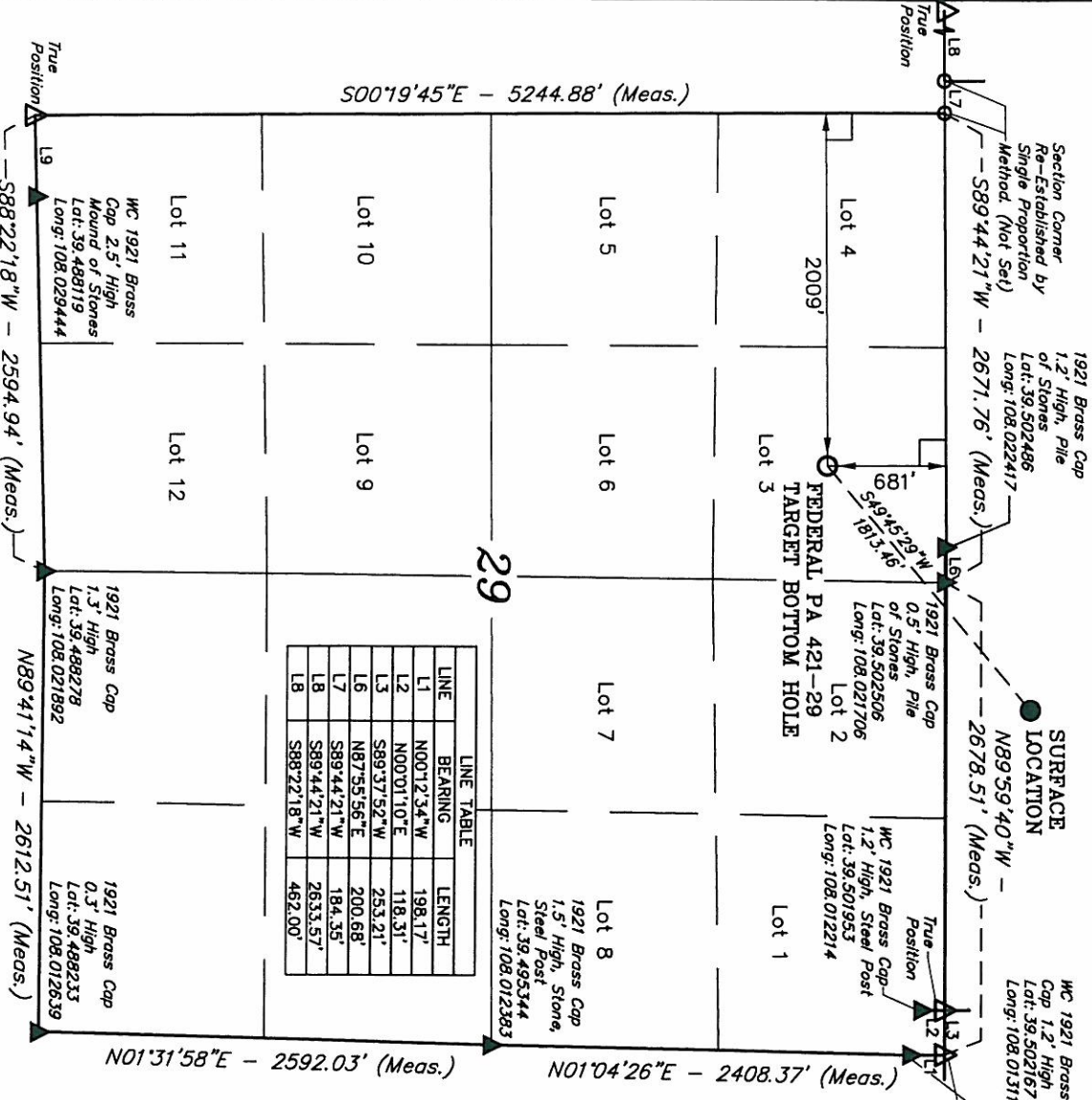
SCALE	DATE SURVEYED:	DATE DRAWN:
1" = 1000'	05-17-10	06-12-10

PARTY	REFERENCES
B.H. B.B. D.R.B.	G.L.O. PLAT

WEATHER	FILE
COOL	WILLIAMS PRODUCTION RMT COMPANY

LEGEND:

- = 90° SYMBOL
- = PROPOSED WELL HEAD.
- ▲ = SECTION CORNERS LOCATED.



LINE	BEARING	LENGTH
L1	N00°12'34\"W	198.17'
L2	N00°01'10\"E	118.31'
L3	S89°37'52\"W	253.21'
L6	N87°55'56\"E	200.68'
L7	S89°44'21\"W	184.35'
L8	S89°44'21\"W	263.57'
L8	S88°22'18\"W	462.00'

NAD 83 (TARGET BOTTOM HOLE)
LATITUDE = 39°30'02.27\" (39.500631)
LONGITUDE = 108°01'26.55\" (108.024042)
STATE PLANE - (COLO. CENTRAL - NAD 83)
N = 1617127.100
E = 2287852.400