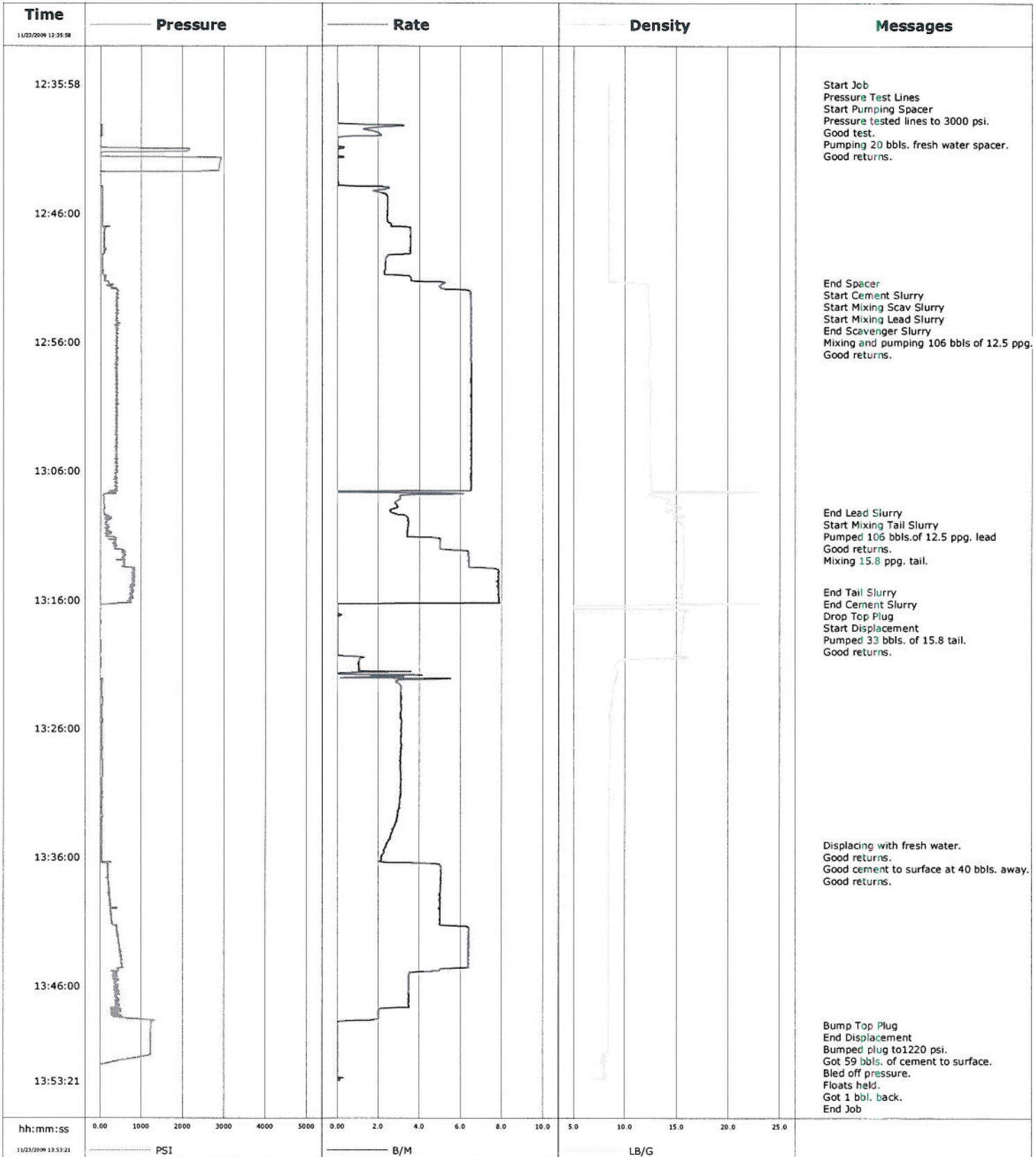
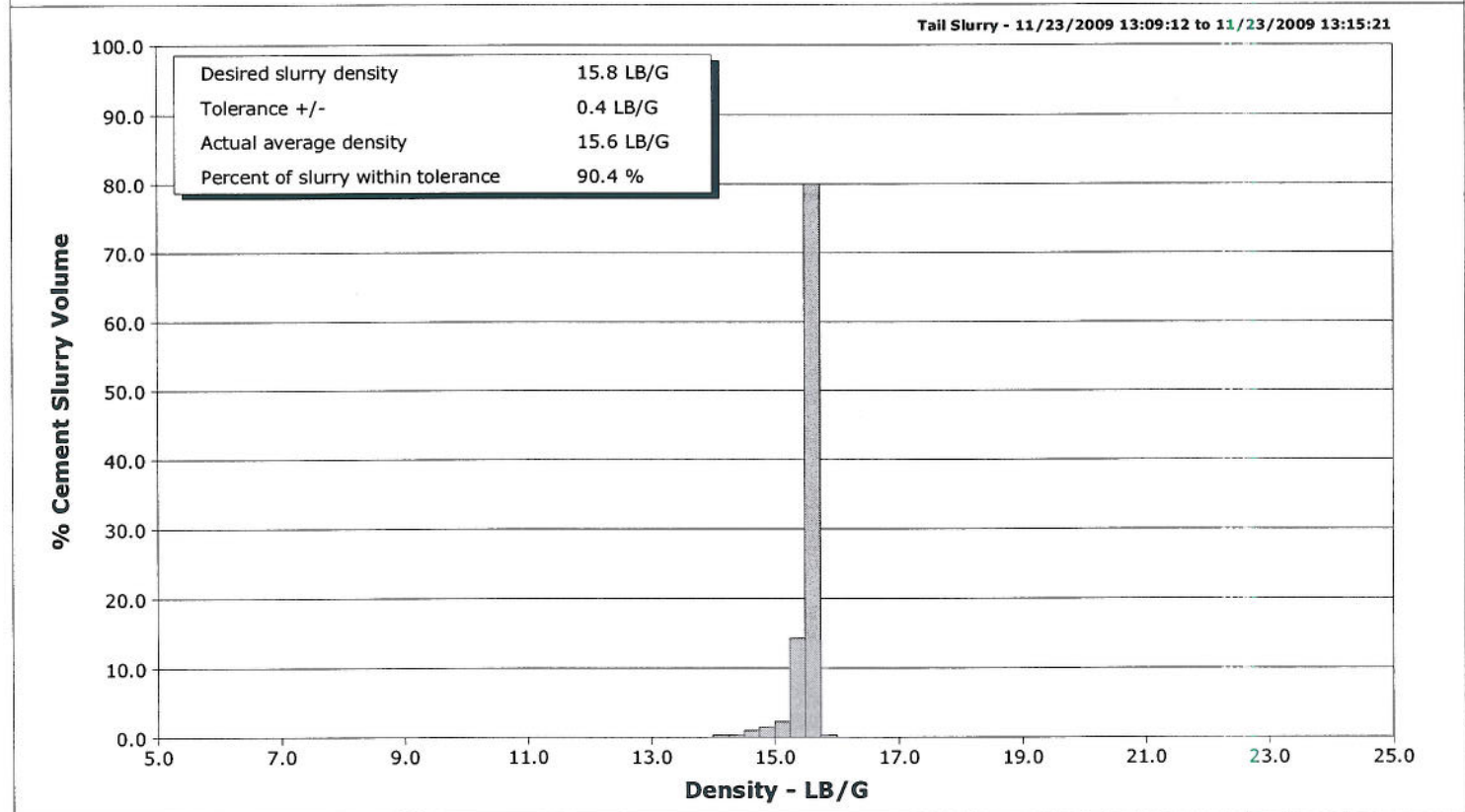
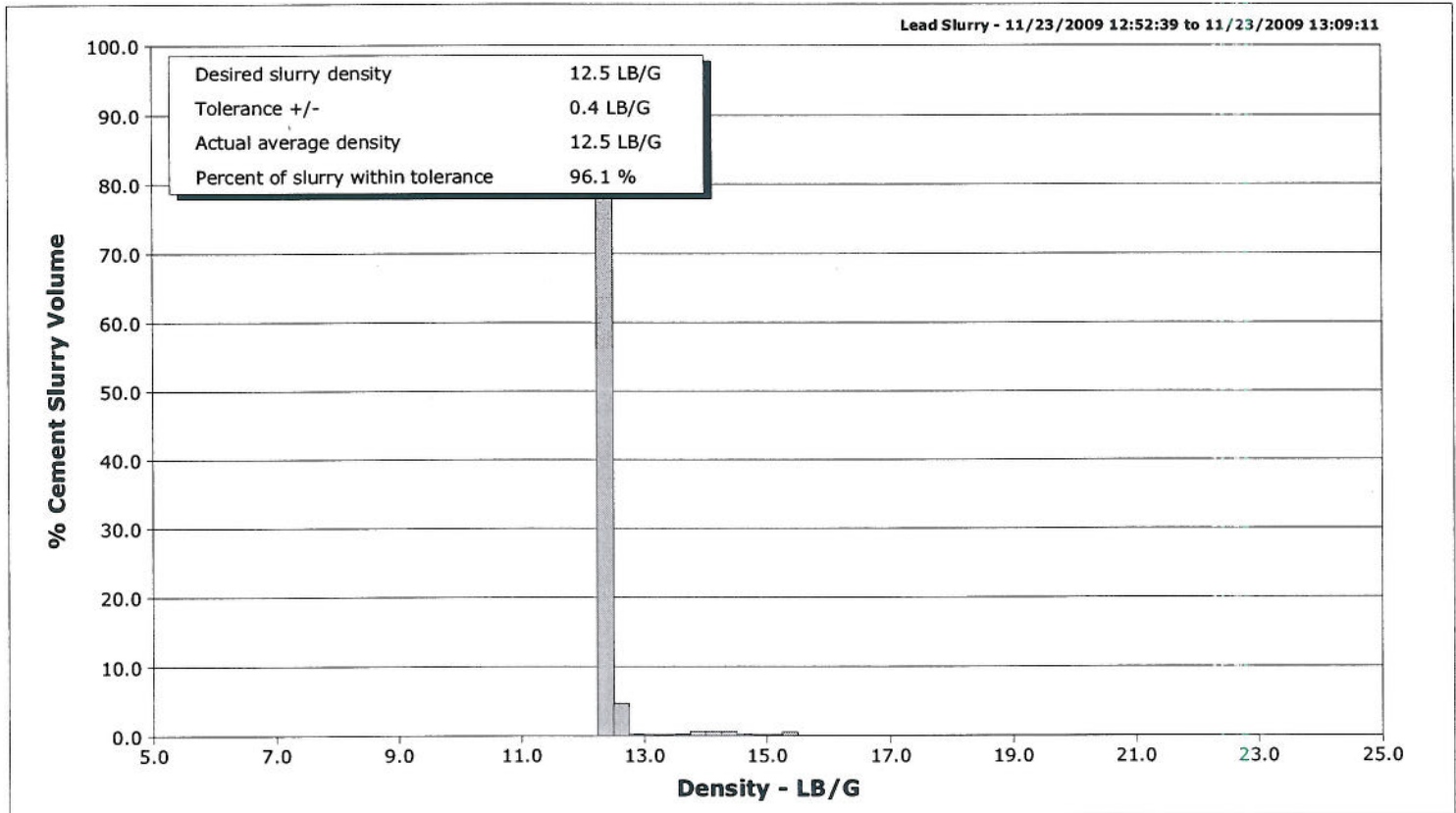


<b>Well</b>	GMU 26-4B2	<b>Client</b>	EnCana
<b>Field</b>	Grass Mesa	<b>SIR No.</b>	
<b>Engineer</b>	Jeff Patterson	<b>Job Type</b>	
<b>Country</b>	United States	<b>Job Date</b>	11-23-2009



# Schlumberger Cementing Qa/Qc Density Report

<b>Well</b>	GMU 26-4B2	<b>Client</b>	EnCana
<b>Field</b>	Grass Mesa	<b>SIR No.</b>	
<b>Engineer</b>	Jeff Patterson	<b>Job Type</b>	
<b>Country</b>	United States	<b>Job Date</b>	11-23-2009





# Cementing Service Report

Customer	EnCana	Job Number	B21J-00086
----------	--------	------------	------------

Well		Location (legal)		Schlumberger Location		Job Start	
GMU 26-4B2		H27NW		Grand Junction, Colorado		Nov/23/2009	
Field		Formation Name/Type		Deviation		Well TVD	
Grass Mesa							
County		State/Province		BHP		Pore Press. Gradient	
Garfield		Colorado					
Well Master		API/UWI		BHST		BHCT	
631130606							
Rig Name		Drilled For		Service Via		Casing/Liner	
Nabors M-15		Gas		Land		Depth, Size, Weight, Grade, Thread	
Offshore Zone		Well Class		Well Type			
		New		Development			
Drilling Fluid Type		Max. Density		Plastic Viscosity		Tubing/Drill Pipe	
						Depth, Size, Weight, Grade, Thread	
Service Line		Job Type					
Cementing		Cem Surface Casing					
Max. Allowed Tub. Press		Max. Allowed Ann. Press		WH Connection		Perforations/Open Hole	
						Top, Bottom, No. of Shots, Total Interval	
Service Instructions						Diameter	
						Treat Down, Displacement, Packer Type, Packer Depth	
						Tubing Vol., Casing Vol., Annular Vol., Openhole Vol.	
Casing/Tubing Secured <input checked="" type="checkbox"/>		1 Hole Vol. Circulated prior to Cement <input checked="" type="checkbox"/>		Casing Tools		Squeeze Job	
Lift Pressure		654 psi		Shoe Type		Guide Squeeze Type	
Pipe Rotated <input type="checkbox"/>		Pipe Reciprocated <input type="checkbox"/>		Shoe Depth		1319.0 ft Tool Type	
No. Centralizers		Top Plugs 1 Bottom Plugs		Stage Tool Type		Tool Depth	
Cement Head Type		Single		Stage Tool Depth		Tail Pipe Size	
Job Scheduled For		Arrived on Location		Leave Location		Collar Type	
Nov/23/2009		Nov/23/2009		Nov/23/2009		Float Tail Pipe Depth	
						Collar Depth 1276.0 ft Sqz. Total Vol.	
Date	Time 24-hr clock	Treating Pressure PSI	Flow Rate B/M	Density LB/G	Volume BBL	Message	
11/23/2009	12:09:14					Started Acquisition	
11/23/2009	12:35:58	-12	0.0	8.41	0.0		
11/23/2009	12:35:59					Start Job	
11/23/2009	12:35:59	-12	0.0	8.41	0.0		
11/23/2009	12:36:02					Pressure Test Lines	
11/23/2009	12:36:02	-12	0.0	8.41	0.0		
11/23/2009	12:36:04					Start Pumping Spacer	
11/23/2009	12:36:04	-12	0.0	8.41	0.0		
11/23/2009	12:36:05					Pressure tested lines to 3000 psi.	
11/23/2009	12:36:05					Good test.	
11/23/2009	12:36:05	-12	0.0	8.40	0.0		
11/23/2009	12:36:06					Pumping 20 bbls. fresh water spacer.	
11/23/2009	12:36:06					Good returns.	
11/23/2009	12:36:06	-13	0.0	8.41	0.0		
11/23/2009	12:36:14	-13	0.0	8.40	0.0		
11/23/2009	12:36:44	-16	0.0	8.41	0.0		
11/23/2009	12:37:14	-16	0.0	8.41	0.0		
11/23/2009	12:37:44	-17	0.0	8.40	0.0		
11/23/2009	12:38:14	-17	0.0	8.40	0.0		
11/23/2009	12:38:44	-16	0.0	8.40	0.0		
11/23/2009	12:39:14	47	3.2	8.40	0.3		

Well		Field		Job Start		Customer		Job Number	
GMU 26-4B2		Grass Mesa		Nov/23/2009		EnCana		B21J-00086	
Date	Time 24-hr clock	Treating Pressure PSI	Flow Rate B/M	Density LB/G	Volume BBL	Message			
11/23/2009	12:40:14	-4	0.0	8.40	1.9				
11/23/2009	12:40:44	-6	0.0	8.40	1.9				
11/23/2009	12:41:14	1761	0.0	8.40	1.9				
11/23/2009	12:41:44	2923	0.1	8.40	1.9				
11/23/2009	12:42:14	2888	0.0	8.40	1.9				
11/23/2009	12:42:44	2873	0.0	8.40	1.9				
11/23/2009	12:43:14	-8	0.0	8.40	1.9				
11/23/2009	12:43:44	-5	0.1	8.40	1.9				
11/23/2009	12:44:14	53	2.0	8.40	2.6				
11/23/2009	12:44:44	51	2.4	8.40	3.7				
11/23/2009	12:45:14	52	2.4	8.40	4.9				
11/23/2009	12:45:44	52	2.4	8.40	6.2				
11/23/2009	12:46:14	51	2.4	8.40	7.4				
11/23/2009	12:46:44	55	2.4	8.40	8.6				
11/23/2009	12:47:14	98	3.5	8.40	10.0				
11/23/2009	12:47:44	97	3.5	8.40	11.8				
11/23/2009	12:48:14	94	3.5	8.40	13.6				
11/23/2009	12:48:44	101	3.5	8.40	15.4				
11/23/2009	12:49:14	54	2.6	8.40	17.1				
11/23/2009	12:49:44	58	2.3	8.40	18.3				
11/23/2009	12:50:14	56	2.3	8.39	19.5				
11/23/2009	12:50:44	62	2.3	8.39	20.6				
11/23/2009	12:51:14	117	3.6	8.39	22.3				
11/23/2009	12:51:22					End Spacer			
11/23/2009	12:51:22	207	5.0	9.04	22.8				
11/23/2009	12:51:23					Start Cement Slurry			
11/23/2009	12:51:23	207	5.2	10.01	22.9				
11/23/2009	12:51:24					Start Mixing Scav Slurry			
11/23/2009	12:51:24	202	5.2	10.73	23.0				
11/23/2009	12:51:44	287	5.0	12.23	24.7				
11/23/2009	12:52:14	403	6.4	12.22	27.7				
11/23/2009	12:52:39					Start Mixing Lead Slurry			
11/23/2009	12:52:39	419	6.5	12.22	30.4				
11/23/2009	12:52:40					End Scavenger Slurry			
11/23/2009	12:52:40	419	6.5	12.23	30.5				
11/23/2009	12:52:42					Mixing and pumping 106 bbls of 12.5 ppg. lead.			
11/23/2009	12:52:42	409	6.5	12.23	30.7				
11/23/2009	12:52:43					Good returns.			
11/23/2009	12:52:43	409	6.5	12.23	30.8				
11/23/2009	12:52:44	406	6.5	12.23	30.9				
11/23/2009	12:53:14	391	6.5	12.28	34.1				
11/23/2009	12:53:44	413	6.5	12.35	37.4				
11/23/2009	12:54:14	389	6.5	12.36	40.6				
11/23/2009	12:54:44	383	6.5	12.41	43.9				
11/23/2009	12:55:14	398	6.5	12.46	47.1				
11/23/2009	12:55:44	398	6.5	12.48	50.4				
11/23/2009	12:56:14	385	6.5	12.48	53.6				
11/23/2009	12:56:44	389	6.5	12.38	56.9				
11/23/2009	12:57:14	393	6.5	12.40	60.1				
11/23/2009	12:57:44	379	6.5	12.28	63.4				
11/23/2009	12:58:14	387	6.5	12.30	66.6				
11/23/2009	12:58:44	409	6.5	12.31	69.9				
11/23/2009	12:59:14	386	6.5	12.44	73.1				
11/23/2009	12:59:44	408	6.5	12.50	76.4				

Well		Field		Job Start		Customer		Job Number	
GMU 26-4B2		Grass Mesa		Nov/23/2009		EnCana		B21J-00086	
Date	Time 24-hr clock	Treating Pressure PSI	Flow Rate B/M	Density LB/G	Volume BBL	Message			
11/23/2009	13:00:44	396	6.5	12.44	82.9				
11/23/2009	13:01:14	407	6.5	12.45	86.2				
11/23/2009	13:01:44	373	6.5	12.45	89.4				
11/23/2009	13:02:14	383	6.5	12.44	92.7				
11/23/2009	13:02:44	387	6.5	12.42	95.9				
11/23/2009	13:03:14	409	6.5	12.41	99.2				
11/23/2009	13:03:44	397	6.5	12.41	102.4				
11/23/2009	13:04:14	408	6.5	12.40	105.7				
11/23/2009	13:04:44	409	6.5	12.40	108.9				
11/23/2009	13:05:14	389	6.5	12.39	112.2				
11/23/2009	13:05:44	394	6.5	12.47	115.4				
11/23/2009	13:06:14	369	6.5	12.48	118.7				
11/23/2009	13:06:44	386	6.5	12.49	121.9				
11/23/2009	13:07:14	401	6.5	12.48	125.2				
11/23/2009	13:07:44	371	4.9	12.56	127.6				
11/23/2009	13:08:14	89	3.0	14.31	129.4				
11/23/2009	13:08:44	116	2.9	15.13	130.8				
11/23/2009	13:09:11					End Lead Slurry			
11/23/2009	13:09:11	91	2.6	13.93	132.1				
11/23/2009	13:09:12					Start Mixing Tail Slurry			
11/23/2009	13:09:12	93	2.6	14.04	132.1				
11/23/2009	13:09:14					Pumped 106 bbls.of 12.5 ppg. lead			
11/23/2009	13:09:14					Good returns.			
11/23/2009	13:09:14					Mixing 15.8 ppg. tail.			
11/23/2009	13:09:14	93	2.6	14.15	132.2				
11/23/2009	13:09:44	273	3.4	14.88	133.8				
11/23/2009	13:10:14	130	3.4	15.53	135.5				
11/23/2009	13:10:44	133	3.4	15.64	137.2				
11/23/2009	13:11:14	343	4.9	15.64	139.0				
11/23/2009	13:11:44	375	5.0	15.66	141.5				
11/23/2009	13:12:14	593	6.3	15.68	144.2				
11/23/2009	13:12:44	537	6.4	15.68	147.3				
11/23/2009	13:13:14	563	6.4	15.68	150.5				
11/23/2009	13:13:44	836	7.9	15.68	154.0				
11/23/2009	13:14:14	771	7.8	15.66	157.9				
11/23/2009	13:14:44	774	7.8	15.63	161.9				
11/23/2009	13:15:14	767	7.8	15.49	165.8				
11/23/2009	13:15:21					End Tail Slurry			
11/23/2009	13:15:21	787	7.9	15.48	166.7				
11/23/2009	13:15:22					End Cement Slurry			
11/23/2009	13:15:22	787	7.9	15.47	166.8				
11/23/2009	13:15:44	787	7.8	15.45	169.7				
11/23/2009	13:16:14	743	7.9	15.19	173.6				
11/23/2009	13:16:35					Drop Top Plug			
11/23/2009	13:16:35	-5	0.0	4.37	174.0				
11/23/2009	13:16:38					Start Displacement			
11/23/2009	13:16:38	-6	0.0	4.36	174.0				
11/23/2009	13:16:43					Pumped 33 bbls. of 15.8 tail.			
11/23/2009	13:16:43					Good returns.			
11/23/2009	13:16:43	-6	0.0	11.37	174.0				
11/23/2009	13:16:44	-7	0.0	11.37	174.0				
11/23/2009	13:17:14	-10	0.2	15.68	0.0				
11/23/2009	13:17:44	5	0.0	15.71	0.0				
11/23/2009	13:18:14	-13	0.0	15.58	0.0				

Well		Field		Job Start		Customer		Job Number	
GMU 26-4B2		Grass Mesa		Nov/23/2009		EnCana		B21J-00086	
Date	Time 24-hr clock	Treating Pressure PSI	Flow Rate B/M	Density LB/G	Volume BBL	Message			
11/23/2009	13:19:14	9	0.0	15.42	0.0				
11/23/2009	13:19:44	9	0.0	15.42	0.0				
11/23/2009	13:20:14	-5	0.0	15.34	0.0				
11/23/2009	13:20:44	7	1.1	9.44	0.4				
11/23/2009	13:21:14	1	1.0	9.03	0.9				
11/23/2009	13:21:44	-14	0.1	9.26	1.5				
11/23/2009	13:22:14	47	3.3	9.09	2.6				
11/23/2009	13:22:44	45	3.1	8.93	4.1				
11/23/2009	13:23:14	43	3.1	8.80	5.7				
11/23/2009	13:23:44	53	3.1	8.74	7.2				
11/23/2009	13:24:14	39	3.1	8.66	8.8				
11/23/2009	13:24:44	39	3.1	8.57	10.3				
11/23/2009	13:25:14	38	3.1	8.52	11.8				
11/23/2009	13:25:44	38	3.1	8.61	13.4				
11/23/2009	13:26:14	40	3.1	8.60	15.0				
11/23/2009	13:26:44	38	3.1	8.57	16.5				
11/23/2009	13:27:14	37	3.1	8.55	18.0				
11/23/2009	13:27:44	39	3.1	8.59	19.6				
11/23/2009	13:28:14	38	3.1	8.60	21.1				
11/23/2009	13:28:44	54	3.1	8.57	22.7				
11/23/2009	13:29:14	54	3.1	8.46	24.2				
11/23/2009	13:29:44	55	3.1	8.45	25.7				
11/23/2009	13:30:14	38	3.1	8.43	27.3				
11/23/2009	13:30:44	38	3.1	8.42	28.8				
11/23/2009	13:31:14	38	3.1	8.43	30.4				
11/23/2009	13:31:44	38	3.0	8.43	31.9				
11/23/2009	13:32:14	37	3.0	8.45	33.4				
11/23/2009	13:32:44	54	2.9	8.43	34.9				
11/23/2009	13:33:14	38	2.9	8.42	36.3				
11/23/2009	13:33:44	37	2.7	8.41	37.7				
11/23/2009	13:34:14	37	2.6	8.41	39.1				
11/23/2009	13:34:44	37	2.5	8.41	40.4				
11/23/2009	13:35:03					Displacing with fresh water.			
11/23/2009	13:35:03					Good returns.			
11/23/2009	13:35:03					Good cement to surface at 40 bbls. away.			
11/23/2009	13:35:03	37	2.4	8.41	41.1				
11/23/2009	13:35:04					Good returns.			
11/23/2009	13:35:04	37	2.4	8.41	41.2				
11/23/2009	13:35:14	37	2.3	8.41	41.6				
11/23/2009	13:35:44	37	2.3	8.42	42.7				
11/23/2009	13:36:44	179	5.0	8.40	45.5				
11/23/2009	13:37:14	187	5.0	8.40	48.0				
11/23/2009	13:37:44	192	5.0	8.40	50.5				
11/23/2009	13:38:14	211	5.0	8.40	53.0				
11/23/2009	13:38:44	213	5.0	8.40	55.6				
11/23/2009	13:39:14	223	5.0	8.41	58.1				
11/23/2009	13:39:44	245	5.0	8.40	60.5				
11/23/2009	13:40:14	257	5.0	8.40	63.0				
11/23/2009	13:40:44	268	5.0	8.40	65.5				
11/23/2009	13:41:14	285	5.0	8.40	68.0				
11/23/2009	13:41:44	411	6.4	8.40	71.0				
11/23/2009	13:42:14	435	6.4	8.40	74.2				
11/23/2009	13:42:44	459	6.4	8.40	77.4				
11/23/2009	13:43:14	472	6.4	8.41	80.6				

Well		Field		Job Start		Customer		Job Number	
GMU 26-4B2		Grass Mesa		Nov/23/2009		EnCana		B21J-00086	
Date	Time 24-hr clock	Treating Pressure PSI	Flow Rate B/M	Density LB/G	Volume BBL	Message			
11/23/2009	13:44:14	513	6.4	8.40	86.9				
11/23/2009	13:44:44	447	5.1	8.40	90.0				
11/23/2009	13:45:14	399	3.5	8.40	92.1				
11/23/2009	13:45:44	407	3.5	8.40	93.8				
11/23/2009	13:46:14	423	3.5	8.40	95.6				
11/23/2009	13:46:44	365	3.5	8.40	97.3				
11/23/2009	13:47:14	401	3.5	8.40	99.0				
11/23/2009	13:47:44	263	2.6	8.40	100.8				
11/23/2009	13:48:14	275	2.0	8.40	101.8				
11/23/2009	13:48:44	1214	0.5	8.40	102.7				
11/23/2009	13:49:01					Bump Top Plug			
11/23/2009	13:49:01					End Displacement			
11/23/2009	13:49:01	1236	0.0	8.41	102.8				
11/23/2009	13:49:03					Bumped plug to 1220 psi.			
11/23/2009	13:49:03	1235	0.0	8.41	102.8				
11/23/2009	13:49:04					Got 59 bbls. of cement to surface.			
11/23/2009	13:49:04					Bled off pressure.			
11/23/2009	13:49:04					Floats held.			
11/23/2009	13:49:04	1235	0.0	8.41	102.8				
11/23/2009	13:49:05					Got 1 bbl. back.			
11/23/2009	13:49:05	1234	0.0	8.41	102.8				
11/23/2009	13:49:14	1227	0.0	8.41	102.8				
11/23/2009	13:49:44	1221	0.0	8.41	102.8				
11/23/2009	13:50:14	1219	0.0	8.41	102.8				
11/23/2009	13:50:44	1217	0.0	8.41	102.8				
11/23/2009	13:51:14	1216	0.0	7.96	102.8				
11/23/2009	13:51:44	600	0.0	7.81	102.8				
11/23/2009	13:52:14	-13	0.0	8.10	102.8				
11/23/2009	13:52:44	-23	0.0	8.05	102.8				
11/23/2009	13:53:14	-23	0.0	8.05	102.8				
11/23/2009	13:53:19					End Job			
11/23/2009	13:53:19	-23	0.0	8.38	102.8				

### Post Job Summary

Average Pump Rates, bbl/min				Volume of Fluid Injected, bbl			
Slurry	N2	Mud	Maximum Rate	Total Slurry	Mud	Spacer	N2
6.0			7.0	137.0		20.0	
Treating Pressure Summary, psi				Breakdown Fluid			
Maximum	Final	Average	Bump Plug to	Breakdown	Type	Volume	Density
3000	1221	250	1221				
Avg. N2 Percent	Designed Slurry Volume		Displacement	Mix Water Temp	Cement Circulated to Surface?	Volume	
	137.0 bbl		99.0 bbl	50 degF	<input checked="" type="checkbox"/>	59.0 bbl	
Customer or Authorized Representative				Schlumberger Supervisor		Circulation Lost	
Craig Rosenbaum				Jeff Patterson		<input type="checkbox"/>	
						Job Completed <input checked="" type="checkbox"/>	