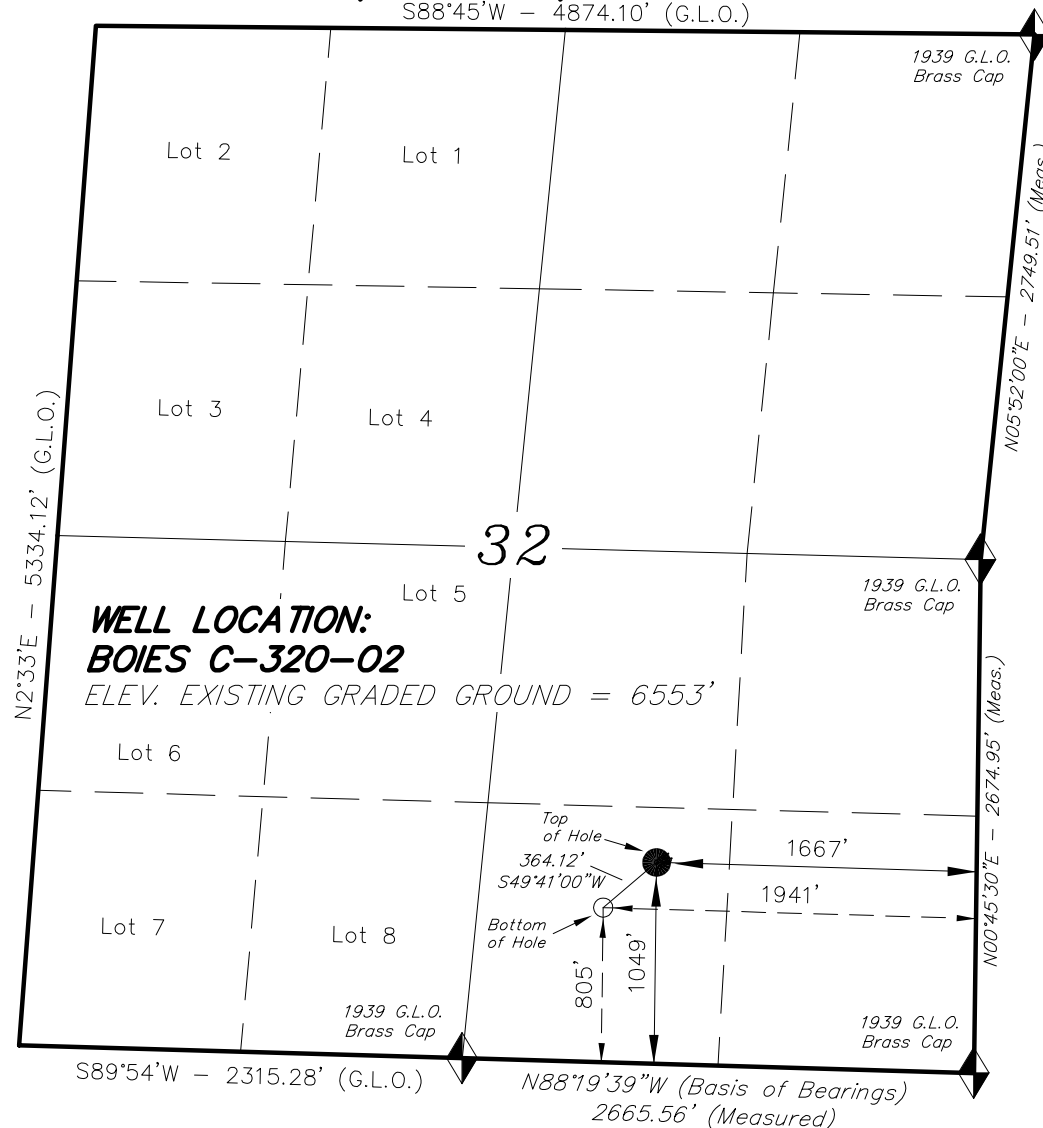


# T2S, R98W, 6TH P.M.

S88°45'W - 4874.10' (G.L.O.)

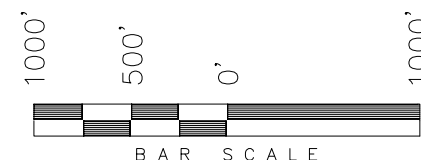


**WELL LOCATION:  
BOIES C-320-02**

ELEV. EXISTING GRADED GROUND = 6553'

## WHITING OIL & GAS CORPORATION

WELL LOCATION, BOIES C-320-02,  
LOCATED AS SHOWN IN THE SW 1/4 SE  
1/4 OF SECTION 32, T2S, R98W, 6TH  
P.M. RIO BLANCO, COLORADO.



### NOTES:

- Bearings are based on Global Positioning Satellite observations.
- G.P.S. Operator: D. Petty, (PDOP) = 1.8

### IMPROVEMENT NOTE:

See addendum to legal plat (Sheet 1m)  
for visible improvements within 200' of the  
proposed well head.

THIS IS TO CERTIFY THAT THE ABOVE PLAT WAS  
PREPARED FROM FIELD NOTES OF SURVEYS  
MADE BY ME OR UNDER MY SUPERVISION. THE  
LOCATION HAS BEEN STAKED ON THE GROUND AS  
SHOWN ON THE PLAT AND THAT THE SAME ARE  
TRUE AND CORRECT TO THE BEST OF MY  
KNOWLEDGE AND BELIEF.

*[Signature]*  
# 30125  
REGISTERED LAND SURVEYOR  
REGISTRATION NO. 30125  
STATE OF COLORADO  
NATIONAL LAND SURVEYOR

◆ = SECTION CORNERS LOCATED

BASIS OF ELEVATIONS IS MAGNOLIA TRIANGULATION STATION  
LOCATED IN THE NW 1/4 OF SECTION 9, T2S, R96W, 6th P.M.  
REPORTED FROM THE NATIONAL GEODETIC SURVEY AS BEING  
7529 FEET (NAVD 88).  
WE MEASURED IT TO BE 7526.2 FEET.

NAD 83 (SURFACE LOCATION)	
LATITUDE = 39°49'41.10"	(39.828083)
LONGITUDE = 108°24'54.61"	(108.415170)
NAD 27 (SURFACE LOCATION)	
LATITUDE = 39°49'41.20"	(39.828110)
LONGITUDE = 108°24'52.28"	(108.414523)
NAD 83 (BOTTOM HOLE LOCATION)	
LATITUDE = 39°49'38.68"	(39.827412)
LONGITUDE = 108°24'58.07"	(108.416130)
NAD 27 (BOTTOM HOLE LOCATION)	
LATITUDE = 39°49'38.78"	(39.827439)
LONGITUDE = 108°24'55.74"	(108.415483)

## TRI STATE LAND SURVEYING & CONSULTING

180 NORTH VERNAL AVE. - VERNAL, UTAH 84078  
(435) 781-2501

DATE SURVEYED: 10-22-08	SURVEYED BY: D.P.	SHEET 1a OF 2
DATE DRAWN: 10-29-08	DRAWN BY: L.C.S.	
REVISED:	SCALE: 1" = 1000'	