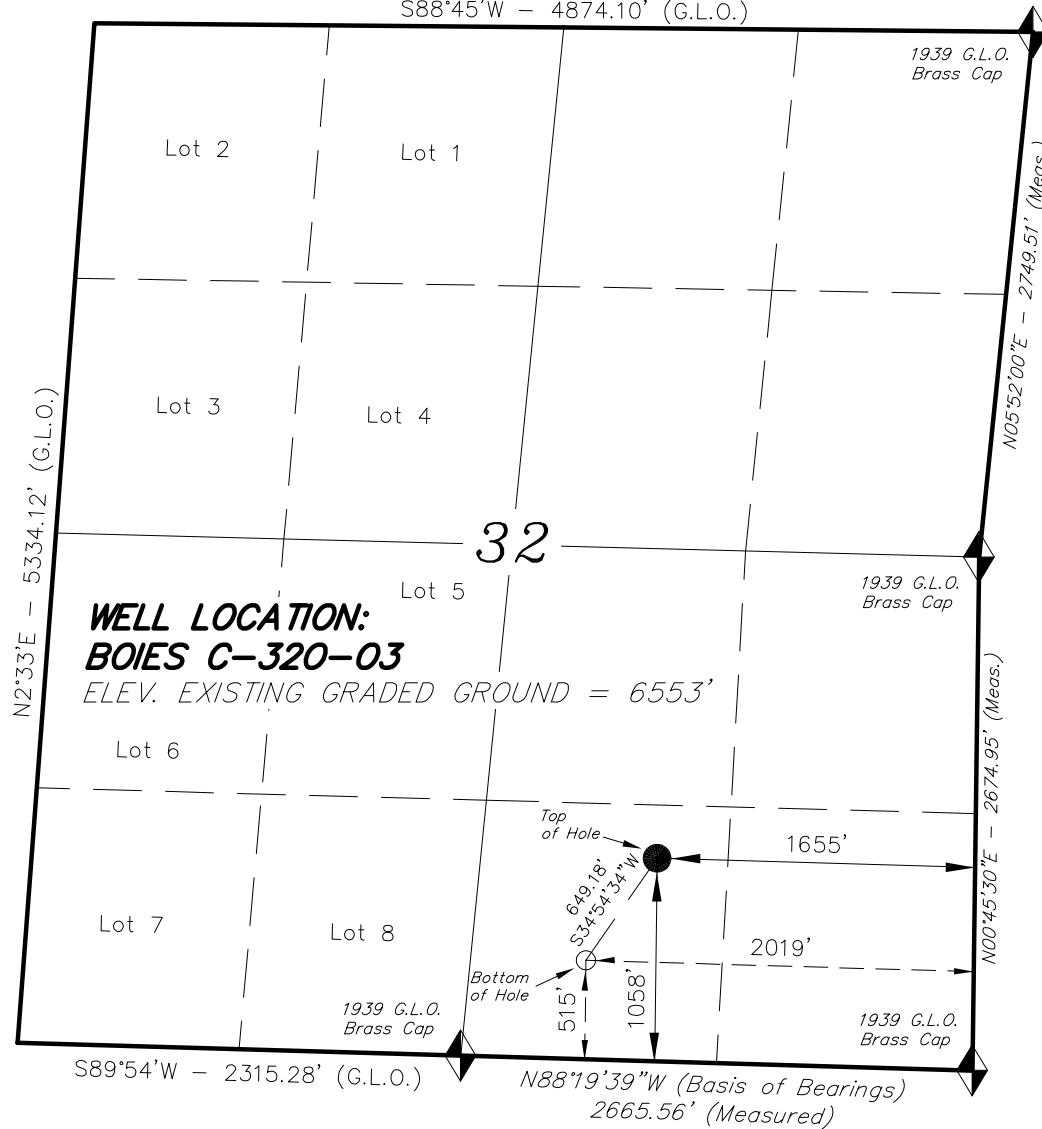


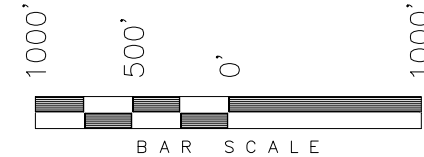
T2S, R98W, 6TH P.M.

S88°45'W — 4874.10' (G.L.O.)



WHITING OIL & GAS CORPORATION

WELL LOCATION, BOIES C-320-03,
LOCATED AS SHOWN IN THE SW 1/4 SE
1/4 OF SECTION 32, T2S, R98W, 6TH
P.M. RIO BLANCO, COLORADO.



NOTES:

1. Bearings are based on Global Positioning Satellite observations.
2. G.P.S. Operator: D. Petty, (PDOP) = 1.8

IMPROVEMENT NOTE:

See addendum to legal plat (Sheet 1m)
for visible improvements within 200' of the
proposed well head.

THIS IS TO CERTIFY THAT THE ABOVE PLAT WAS
PREPARED FROM FIELD NOTES OF REAL SURVEYS
MADE BY ME OR UNDER MY SUPERVISION. THE
LOCATION HAS BEEN STATIONED AND GROUNDED AS
SHOWN ON THE PLAT AND THAT THE SAME ARE
TRUE AND CORRECT TO THE BEST OF MY
KNOWLEDGE AND BELIEF.

30125
REGISTERED LAND SURVEYOR
REGISTRATION NO. 30125
STATE OF COLORADO
NATIONAL LAND SURVEYOR



= SECTION CORNERS LOCATED

BASIS OF ELEVATIONS IS MAGNOLIA TRIANGULATION STATION
LOCATED IN THE NW 1/4 OF SECTION 9, T2S, R96W, 6th P.M.
REPORTED FROM THE NATIONAL GEODETIC SURVEY AS BEING
7529 FEET (NAVD 88).
WE MEASURED IT TO BE 7526.2 FEET.

NAD 83 (SURFACE LOCATION)	
LATITUDE	= 39°49'41.19" (39.828109)
LONGITUDE	= 108°24'54.46" (108.415128)
NAD 27 (SURFACE LOCATION)	
LATITUDE	= 39°49'41.29" (39.828136)
LONGITUDE	= 108°24'52.13" (108.414481)
NAD 83 (BOTTOM HOLE LOCATION)	
LATITUDE	= 39°49'35.82" (39.826615)
LONGITUDE	= 108°24'58.99" (108.416387)
NAD 27 (BOTTOM HOLE LOCATION)	
LATITUDE	= 39°49'35.91" (39.826642)
LONGITUDE	= 108°24'56.66" (108.415740)

TRI STATE LAND SURVEYING & CONSULTING

180 NORTH VERNAL AVE. — VERNAL, UTAH 84078
(435) 781-2501

DATE SURVEYED: 10-22-08	SURVEYED BY: D.P.	SHEET 1b OF 2
DATE DRAWN: 10-29-08	DRAWN BY: L.C.S.	
REVISED: 11-04-08	SCALE: 1" = 1000'	