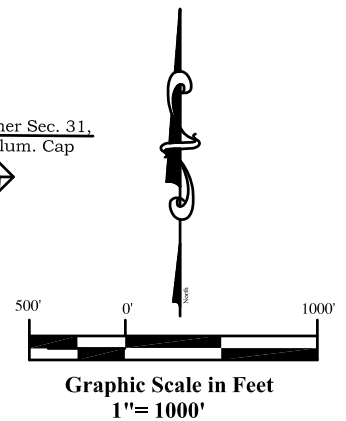
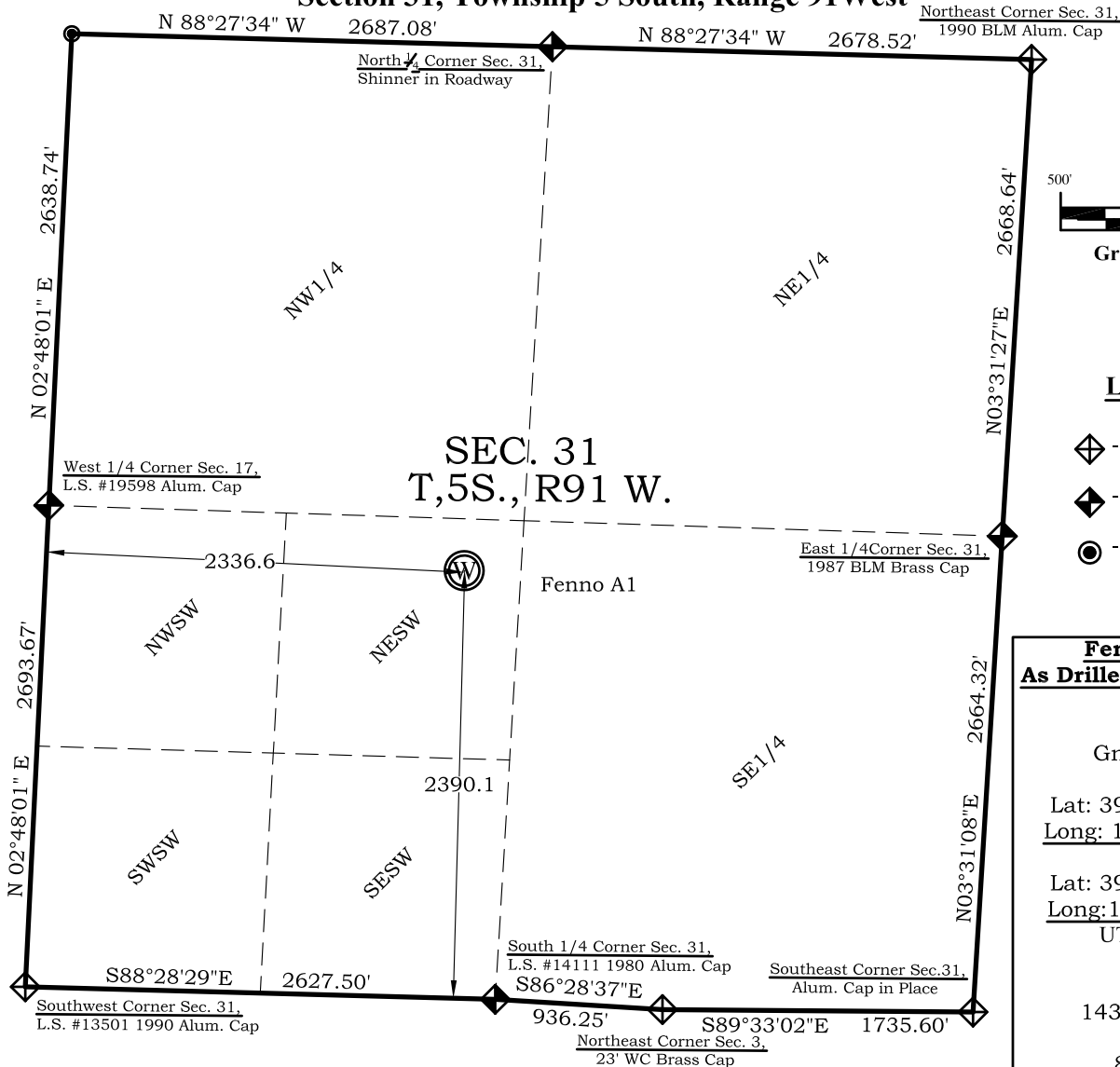


# As Drilled Location Plat

## Fenno Ranch A1

Section 31, Township 5 South, Range 91 West



### Legend

- ◈ - Field Surveyed Section Corner
- ◈ - Field Surveyed Quarter Corner
- ⊙ - Calculated Section Corner Location

### Fenno Ranch A1 As Drilled Surface Location

2390' FSL  
2337' FWL  
Gnd El= 5786.4  
**NAD83**  
Lat: 39.570633318°N  
Long: 107.648530861°W  
**NAD27**  
Lat: 39.570652757°N  
Long: 107.647915726°W  
UTM 13 NORTH  
**NAD 1983**  
Northing  
14381383.454  
Easting  
894017.757

Prepared For Antero Resources

As Drilled Fenno Ranch A1 Well Situate in The NE<sup>1</sup>/<sub>4</sub>SW<sup>1</sup>/<sub>4</sub>  
Section 31, Township 5 South, Range 91 West of the 6 th.  
Principal Meridian, County of Garfield, State of Colorado

### SURVEYOR'S CERTIFICATE

I, SCOTT E. AIBNER, A REGISTERED LAND SURVEYOR, LICENSED UNDER THE LAWS OF THE STATE OF COLORADO DO HEREBY CERTIFY THAT THE SURVEY SHOWN HEREON WAS PREPARED BY RIVER VALLEY SURVEY, INC., FOR ANTERO RESOURCES, BY ME OR UNDER MY DIRECT SUPERVISION AND THAT THIS PLAT IS A TRUE REPRESENTATION THEREOF.



BY: SCOTT E. AIBNER, COLORADO REG. NO. 31143

### Notes

- 1.) LATITUDE AND LONGITUDE COORDINATES ARE DIFFERENTIALLY CORRECTED AND BASED ON PUBLISHED NGS CONTROL STATION "WDP-5". SYSTEM: UTM ZONE: 13 NORTH DATUM: NAD 1983 (CONUS)
- 2.) ELEVATIONS ARE BASED ON NGVD OF 1929.
- 3.) ALL AS DRILLED HOLE LOCATIONS ARE MEASURED 90 DEGREES FROM SECTION LINE.
- 4.) USGS QUADRANGLE MAP "SILT CO".
- 5.) CURRENT SURFACE LAND USE: GRAVEL PIT
- 6.) PDOP AT TIME OF LOCATION OF SURFACE WELL = 2.2



**River Valley Survey, Inc.**  
110 East 3rd. Street, Suite 207  
Rifle, Colorado 81650  
Ph: 970-625-5775

Project: Fenno Ranch A Pad

Field Date: 09-10-10

Date: 09-22-10

Scale: 1"= 1000'

Sheet: 1 of 10

**Well As Drilled Location Plat  
Prepared For Antero Resources**

Situate In:  
SW<sup>1</sup>/<sub>4</sub> Section 31, T5S., R. 91 W. of the  
6th P.M., Garfield County, Colorado

