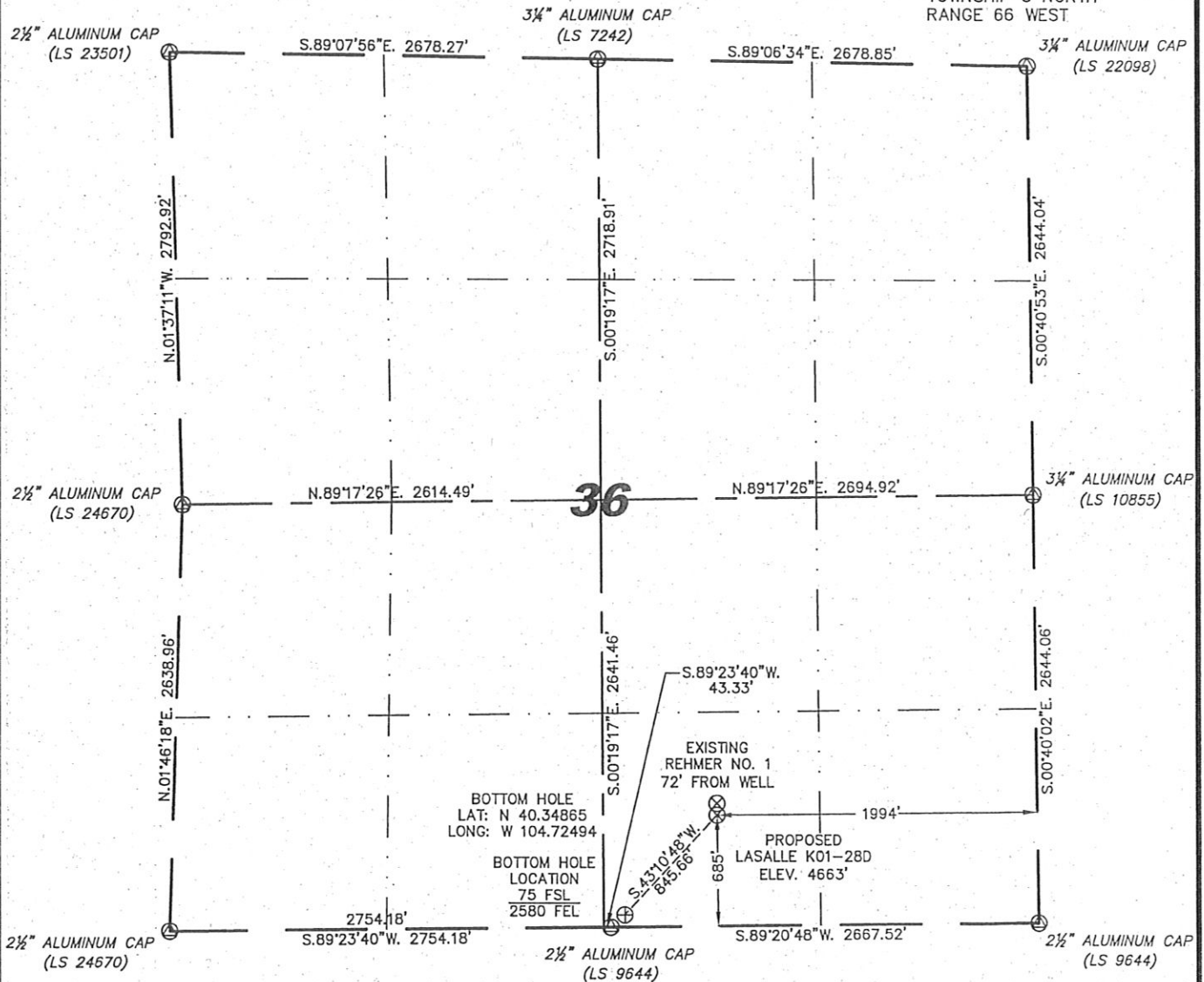


Cheyenne, Wyoming 82009

WELL LOCATION CERTIFICATE
THIS MAP DOES NOT REPRESENT A BOUNDARY SURVEY

SECTION 36
TOWNSHIP 5 NORTH
RANGE 66 WEST



IN ACCORDANCE WITH A REQUEST FROM ROBBIE MILLER - NOBLE ENERGY INC,
STEEL SURVEYING SERVICES, LLC HAS DETERMINED THE LOCATION OF THE LASALLE K01-28D
WELL TO BE 685' FSL, 1994' FEL, AS MEASURED AT NINETY (90) DEGREES FROM THE SECTION
LINES, SECTION 36, TOWNSHIP 5 NORTH, RANGE 66 WEST, 6TH PRINCIPLE MERIDIAN, WELD
COUNTY, COLORADO.

I HEREBY CERTIFY THAT THIS WELL LOCATION CERTIFICATE WAS PREPARED BY ME, OR UNDER MY DIRECT SUPERVISION, THAT THE FIELD WORK WAS COMPLETED ON 05/18/2010, FOR AND ON BEHALF OF NOBLE ENERGY INC, THAT IT IS NOT A LAND SURVEY PLAT OR AN IMPROVEMENT SURVEY PLAT, AND THAT IT IS NOT TO BE RELIED UPON FOR ESTABLISHMENT OF FENCE, BUILDING, OR OTHER FUTURE IMPROVEMENT LINES.

NOTES:

- 1) BASIS OF BEARINGS FOR THIS MAP ARE BASED UPON GPS OBSERVATIONS.
MADE ON 02/25/2010 BETWEEN MONUMENTS LOCATED AT THE SOUTHEAST
SECTION CORNER AND THE NORTHEAST SECTION CORNER OF SAID SECTION
AND WITH ALL BEARINGS SHOWN HEREON RELATIVE THERETO.
- 2) ELEVATIONS ARE BASED UPON NGS OPUS SOLUTION NAVD 88 DATUM.
- 3) THE NEAREST EXISTING WELL IS: REHMER NO. 1, 72' NORTH.
- 4) SEE VISIBLE IMPROVEMENTS EXHIBIT FOR ALL IMPROVEMENTS WITHIN 600'.
- 5) THE LOCATION FALLS IN CROP LAND.

LATITUDE & LONGITUDE (NAD 83 SURFACE HOLE):

LATITUDE: N 40.35033°
LONGITUDE: W 104.72284°

PDOP: 1.8

QUARTER-QUARTER: SW/4SE/4

NEAREST PROPERTY LINE: 640' EAST

LEGEND

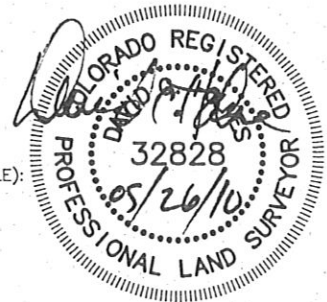
- (A) FOUND SURVEY MONUMENT PER
MONUMENT RECORD - EXCEPTIONS NOTED.
- (C) CALCULATED DIMENSION

Completed 05/26/2010

David C. Holmes
Professional Land Surveyor Registration No. 32828
State of Colorado

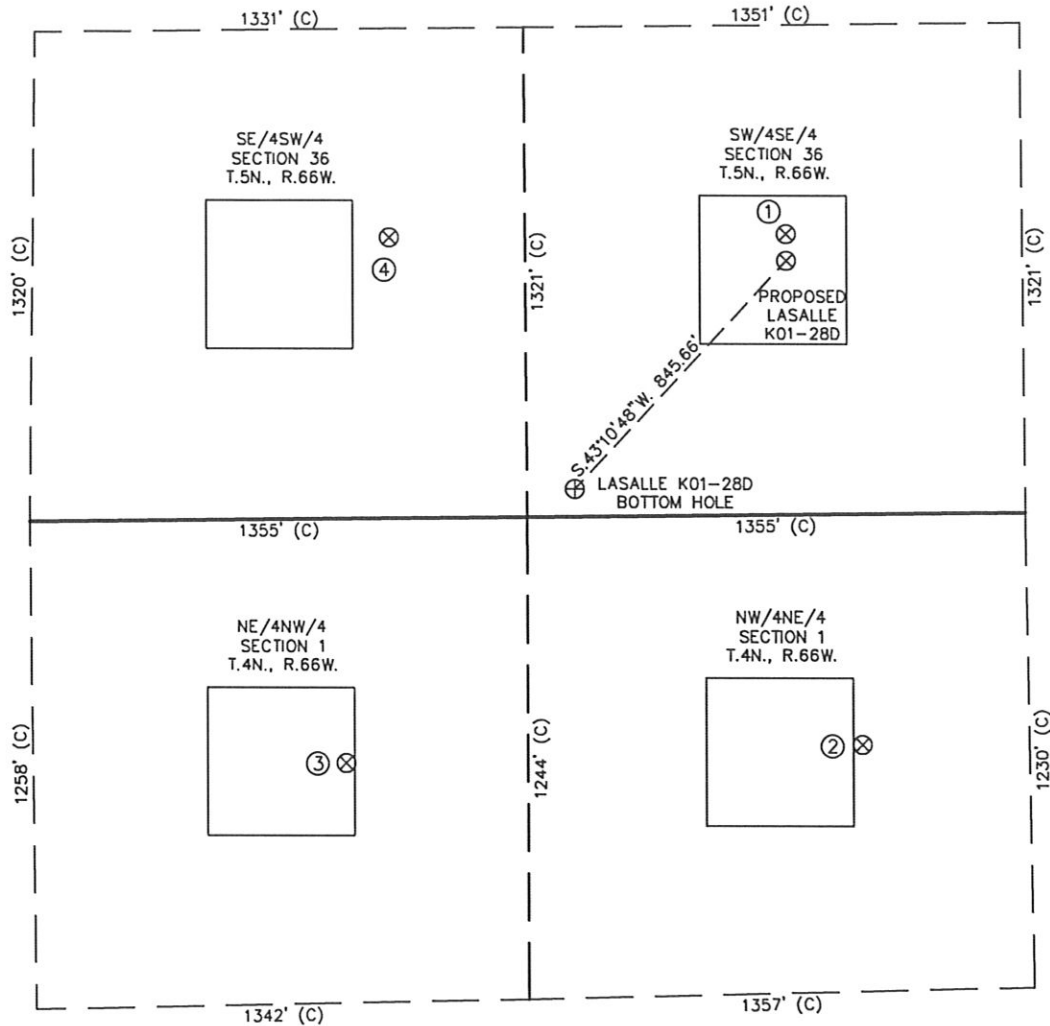
JOB #: 10086

NOTICE: According to Colorado law you MUST commence any legal action based upon any defect in this W.L.C. within three years after you first discover such defect. In no event may any action based upon any defect in this W.L.C. be commenced more than ten years from this sold date of the certification shown hereon.



SKETCH - LASALLE K01-28D

SECTION 36
TOWNSHIP 5 NORTH
RANGE 66 WEST



①

REHMER NO. 1
SW/SE SEC. 36
T.5N., R.66W.
758' FSL
1994' FEL
EL 4663'
N 40.35053
W 104.72284
PDOP 2.5

②

REEVE FREEDA
2-1
NW/NE SEC. 1
T.4N., R.66W.
623' FNL
1849' FEL
EL 4662'
N 40.34674
W 104.72215
PDOP 2.0

③

FREEDA REEVE
4-1
NE/NW SEC. 1
T.4N., R.66W.
660' FNL
2118' FWL
EL 4663'
N 40.34663
W 104.72720
PDOP 1.7

④

REHMER
36-14H6
SE/SW SEC. 36
T.5N., R.66W.
757' FSL
2309' FWL
EL 4665'
N 40.35052
W 104.72673
PDOP 2.4

NOTES:

- 1) THIS SKETCH DOES NOT REPRESENT A BOUNDARY SURVEY.
- 2) THE DATUM FOR THE LATITUDES AND LONGITUDES ON THIS SKETCH IS NAD83.



0 500

Scale: 1" = 500'