

# T6S, R95W, 6th P.M.

## WILLIAMS PRODUCTION RMT COMPANY

Well location, FEDERAL PA 433-20, located as shown in Lot 8 of Section 20, T6S, R95W, 6th P.M., Garfield County, Colorado.

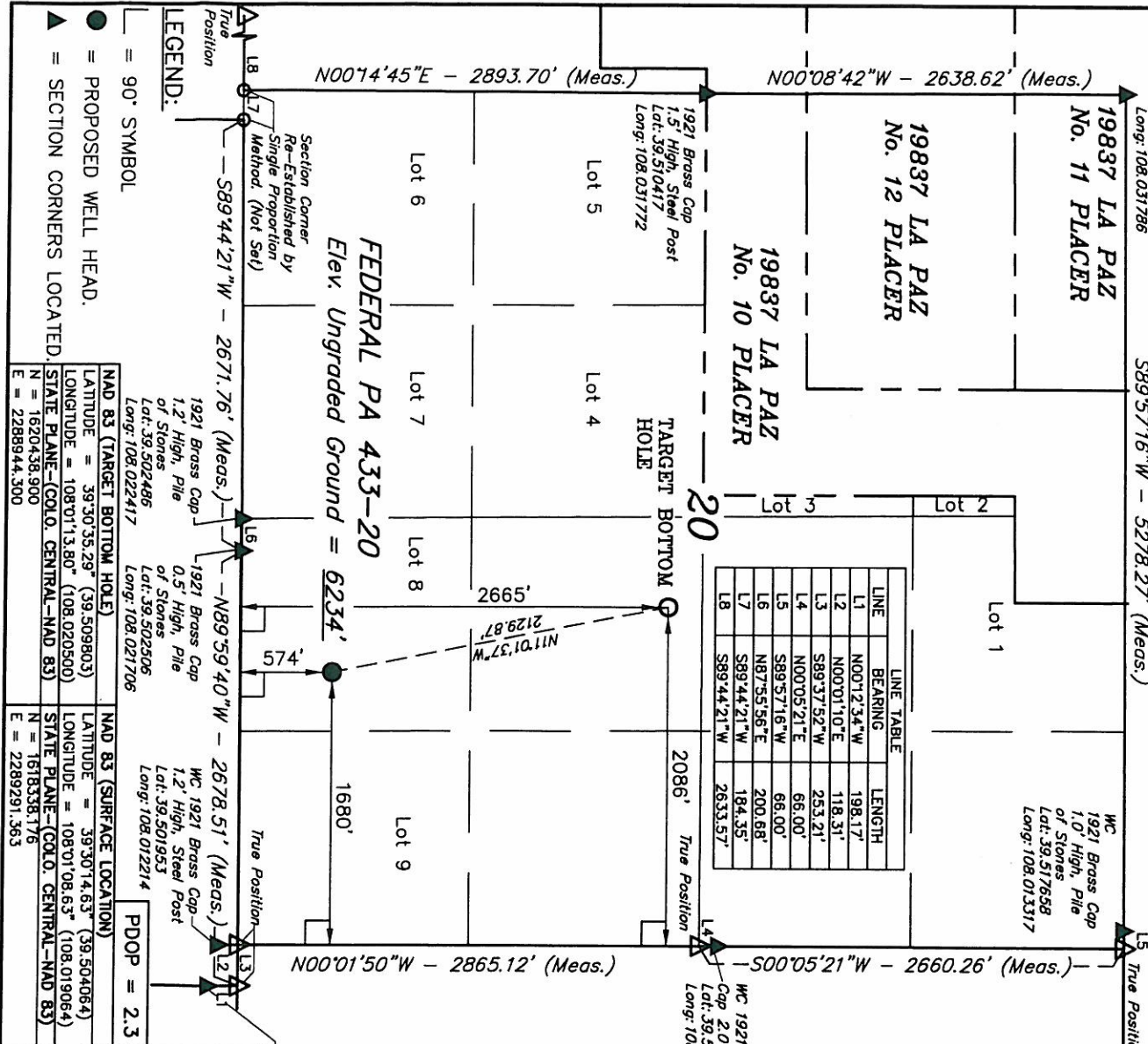
### BASIS OF ELEVATION

SPOT ELEVATION AT THE NORTHWEST CORNER OF SECTION 30, T5S, R95W, 6th P.M. TAKEN FROM THE FORKED GULCH QUADRANGLE, COLORADO, GARFIELD COUNTY, 7.5 MINUTE SERIES (TOPOGRAPHICAL MAP) PUBLISHED BY THE UNITED STATES DEPARTMENT OF THE INTERIOR, GEOLOGICAL SURVEY. SAID ELEVATION IS MARKED AS BEING 5966 FEET.

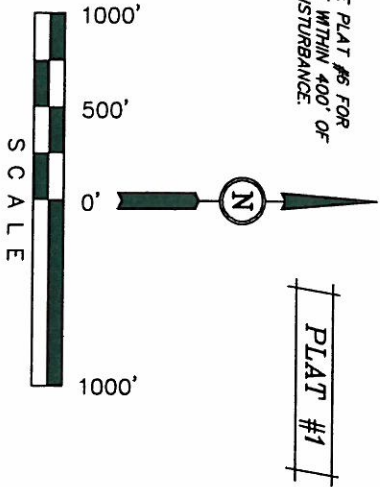
### BASIS OF BEARINGS

BASIS OF BEARINGS IS A G.P.S. OBSERVATION.

LINE	BEARING	LENGTH
L1	N00°12'34"W	198.17'
L2	N00°01'10"E	118.31'
L3	S89°37'52"W	253.21'
L4	N00°05'21"E	66.00'
L5	S89°57'16"W	66.00'
L6	N87°55'56"E	200.68'
L7	S89°44'21"W	184.35'
L8	S89°44'21"W	2633.57'



NOTE:  
SEE CURRENT FOOTAGE PLAT #6 FOR EXISTING IMPROVEMENT WITHIN 400' OF THE PROPOSED WELL DISTURBANCE.



THIS IS TO CERTIFY THAT THE ABOVE PLAT WAS PREPARED FROM FIELD NOTES OF ACTUAL SURVEYS MADE BY ME OR UNDER MY SUPERVISION AND THAT THE SAME ARE TRUE AND CORRECT TO THE BEST OF MY KNOWLEDGE AND BELIEF.

Revised: 10-06-10 D.R.B.

MC 1921 Brass Cap 1.2" High  
Lat: 39.502167  
Long: 108.013114

REGISTERED LAND SURVEYOR  
REGISTRATION NO. 17447  
STATE OF COLORADO

**UINTAH ENGINEERING & LAND SURVEYING**  
85 SOUTH 200 EAST - VERNAL, UTAH 84078  
(435) 789-1017

SCALE	1" = 1000'	DATE SURVEYED:	05-17-10	DATE DRAWN:	06-12-10
PARTY	B.H. B.B. D.R.B.	REFERENCES	G.L.O. PLAT		
WEATHER	COOL	FILE	WILLIAMS PRODUCTION RMT COMPANY		