

WILLIAMS PRODUCTION RMT COMPANY
Well location, FEDERAL PA 344-20, located as shown in Lot 8 of Section 20, T6S, R95W, 6th P.M., Garfield County, Colorado.

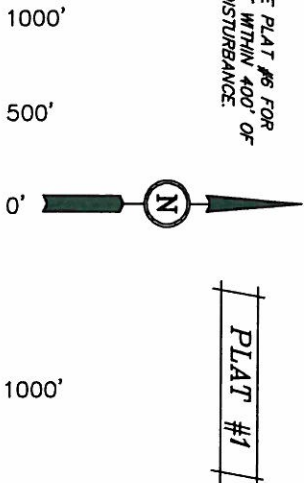
BASIS OF ELEVATION

SPOT ELEVATION AT THE NORTHWEST CORNER OF SECTION 30, T5S, R95W, 6th P.M. TAKEN FROM THE FORKED GULCH QUADRANGLE, COLORADO, GARFIELD COUNTY, 7.5 MINUTE SERIES (TOPOGRAPHICAL MAP) PUBLISHED BY THE UNITED STATES DEPARTMENT OF THE INTERIOR, GEOLOGICAL SURVEY. SAID ELEVATION IS MARKED AS BEING 5966 FEET.

BASIS OF BEARINGS

BASIS OF BEARINGS IS A G.P.S. OBSERVATION.

NOTE:
SEE CURRENT FOOTAGE PLAT #6 FOR
EXISTING IMPROVEMENT WITHIN 400' OF
THE PROPOSED WELL DISTURBANCE.



CERTIFICATE

THIS IS TO CERTIFY THAT THE ABOVE PLAN WAS PREPARED FROM FIELD NOTES OF ACTUAL SURVEYS MADE BY ME OR UNDER MY SUPERVISION AND THAT THE SAME ARE TRUE AND CORRECT TO THE BEST OF MY KNOWLEDGE AND BELIEF.

Revised: 10-06-10 D.R.B.

WC 1921 Brass
Cap 1.2' High
Lat: 39.502167
-Long: 108.013114

REGISTRATION NO. E17492
STATE OF COLORADO

UNTAH ENGINEERING & LAND SURVEYING

85 SOUTH 200 EAST - VERNAL, UTAH 84078

(435) 789-1017

DATE SURVEYED:	DATE DRAWN:
05-17-10	06-12-10

PARIT	REFERENCES
B.H.	B.B.
B.B.	D.R.B.
	G.L.O. PLAT

COOL

WILLIAMS PRODUCTION RMT COMPANY

LINE TABLE		
LINE	BEARING	LENGTH
L1	N0012.34°W	198.11'
L2	N00001.10°E	118.31'
L3	S89.37.52°W	253.21'
L4	N0005.21°E	66.00'
L5	S89.57.16°W	66.00'
L6	N87.55.56°E	200.68'
L7	S89.44.21°W	184.35'
L8	S89.44.21°W	263.57'

