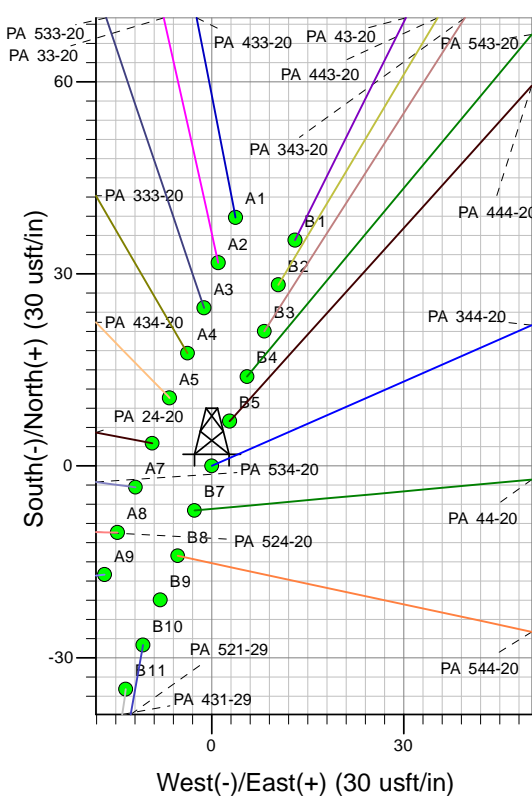
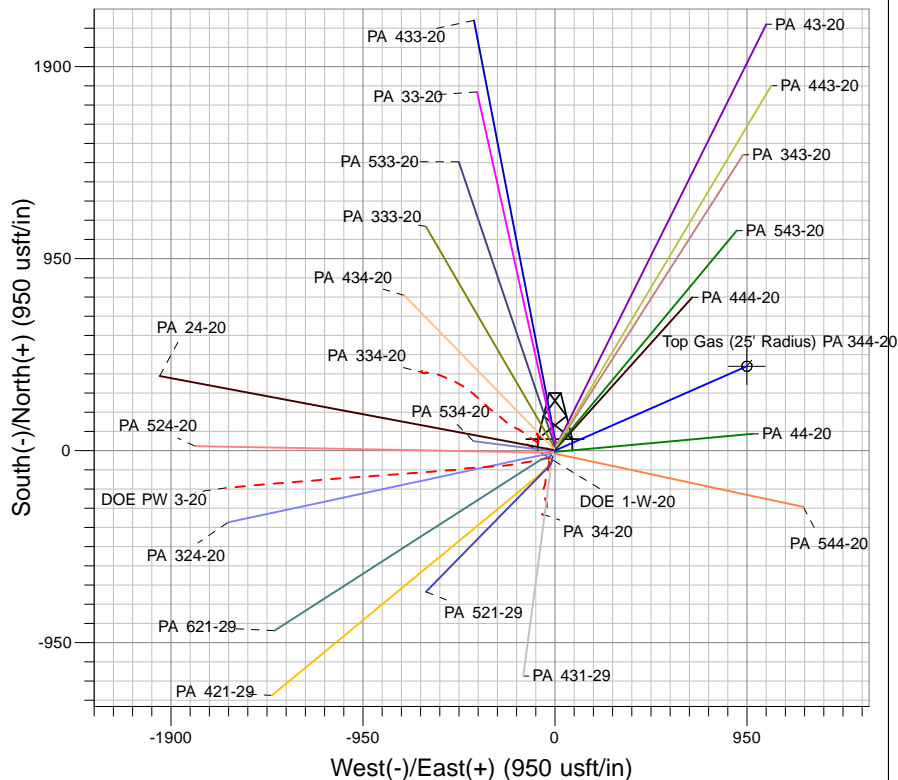
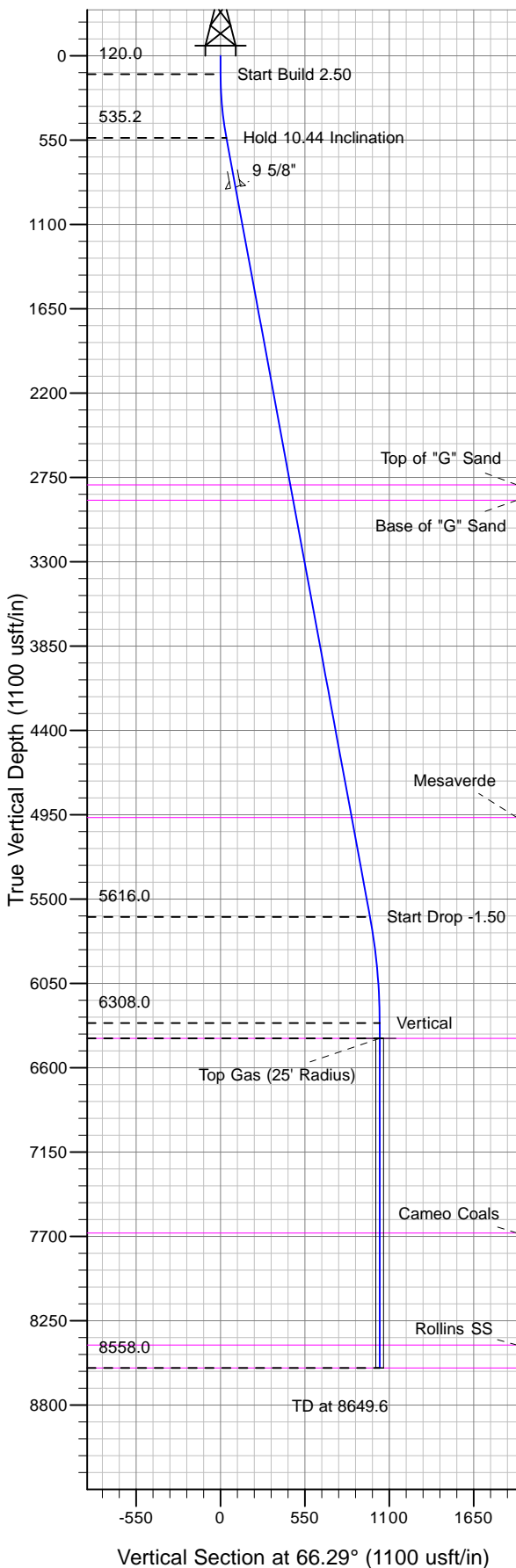




Well Name: PA 344-20
Surface Location: DOE 1-W-20 Pad
North American Datum 1983 , US State Plane 1983 , Colorado Central Zone
Ground Elevation: 6230.0
+N/-S +E/-W Northing Easting Latitude Longitude Slot
0.0 0.0 1618299.50 2289286.60 39° 30' 14.246 N 108° 1' 8.679 W B6
KELLY BUSHING @ 6256.0usft (SSD 577 (26' RKB) kjs)



Project: PA 20-06S-095W
Site: DOE 1-W-20 Pad
Well: PA 344-20
Plan #2 01Oct10 kjs



Azimuths to True North
Magnetic North: 10.51°
Magnetic Field
Strength: 52365.2snT
Dip Angle: 65.77°
Date: 4/22/2010
Model: IGRF2010

ANNOTATIONS

| TVD | MD | Inc | Azi | +N/-S | +E/-W | VSec | Departure | Annotation |
|--------|--------|-------|-------|-------|-------|--------|-----------|------------------------|
| 120.0 | 120.0 | 0.00 | 0.00 | 0.0 | 0.0 | 0.0 | 0.0 | Start Build 2.50 |
| 535.2 | 537.5 | 10.44 | 66.29 | 15.2 | 34.7 | 37.9 | 37.9 | Hold 10.44 Inclination |
| 5616.0 | 5703.8 | 10.44 | 66.29 | 391.6 | 891.6 | 973.8 | 973.8 | Start Drop -1.50 |
| 6308.0 | 6399.6 | 0.00 | 0.00 | 417.0 | 949.5 | 1037.0 | 1037.0 | Vertical |
| 6408.0 | 6499.6 | 0.00 | 0.00 | 417.0 | 949.5 | 1037.0 | 1037.0 | Top Gas |
| 8558.0 | 8649.6 | 0.00 | 0.00 | 417.0 | 949.5 | 1037.0 | 1037.0 | TD at 8649.6 |