

T6S, R95W, 6th P.M.

WILLIAMS PRODUCTION RMT COMPANY
Well location, FEDERAL PA 534-20, located as shown in Lot 8 of Section 20, T6S, R95W, 6th P.M., Garfield County, Colorado.

BASIS OF ELEVATION

SPOT ELEVATION AT THE NORTHWEST CORNER OF SECTION 30, T5S, R95W, 6th P.M. TAKEN FROM THE FORKED GULCH QUADRANGLE, COLORADO, GARFIELD COUNTY, 7.5 MINUTE SERIES (TOPOGRAPHICAL MAP) PUBLISHED BY THE UNITED STATES DEPARTMENT OF THE INTERIOR, GEOLOGICAL SURVEY. SAID ELEVATION IS MARKED AS BEING 5966 FEET.

BASIS OF BEARINGS

BASIS OF BEARINGS IS A G.P.S. OBSERVATION.

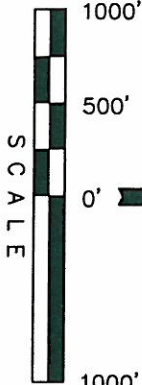
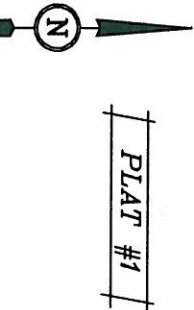
NOTE:
SEE CURRENT FOOTAGE PLAT #6 FOR
EXISTING IMPROVEMENT WITHIN 400' OF
THE PROPOSED WELL DISTURBANCE.

WC 1921 Brass
Cap 2.0' High
Lat: 39.510536
Long: 108.013108

LINE	BEARING	LENGTH
L1	N00°12'34"W	198.17'
L2	N00°01'10"E	118.31'
L3	S89°37'52"W	253.21'
L4	N00°05'21"E	66.00'
L5	S89°37'16"W	66.00'
L6	N87°55'56"E	200.68'
L7	S89°44'21"W	184.35'
L8	S89°44'21"W	263.57'
L9	N82°44'44"W	395.70'

True Position

WC 1921 Brass
Cap 2.0' High
Lat: 39.510536
Long: 108.013108



CERTIFICATE

THIS IS TO CERTIFY THAT THE ABOVE PLAT WAS PREPARED FROM
FIELD NOTES OF ACTUAL SURVEYS MADE BY ME OR UNDER MY
SUPERVISION AND THAT THE SAME ARE TRUE AND CORRECT TO THE
BEST OF MY KNOWLEDGE AND BELIEF.

Revised: 10-07-10 D.R.B.

WC 1921 Brass
Cap 1.2' High
Lat: 39.502167
Long: 108.013114

REGISTERED LAND SURVEYOR
EXPIRATION: 06/17/12
STATE OF COLORADO

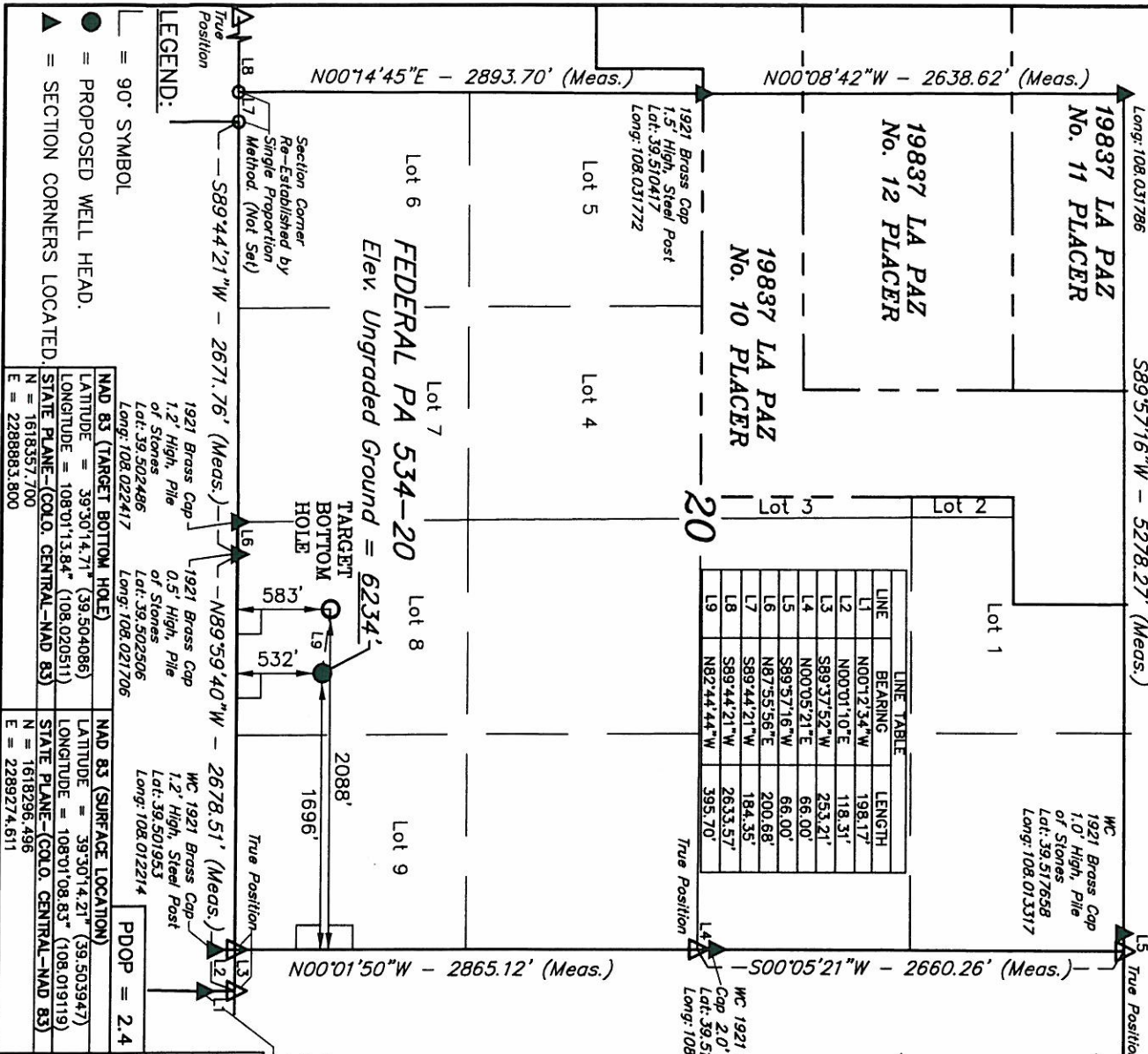
UNTIAH ENGINEERING & LAND SURVEYING
85 SOUTH 200 EAST - VERNAL, UTAH 84078
(435) 789-1017

SCALE: 1" = 1000'
DATE SURVEYED: 05-17-10
DATE DRAWN: 06-12-10

PARTY: B.H., B.B., D.R.B., REFERENCES: G.L.O. PLAT

WEATHER: COOL FILE

WILLIAMS PRODUCTION RMT COMPANY



LEGEND:
● = 90° SYMBOL
● = PROPOSED WELL HEAD.
▲ = SECTION CORNERS LOCATED.

NAD 83 (TARGET BOTTOM HOLE)
LATITUDE = 39°30'14.71" (39.504086)
LONGITUDE = 108°01'13.84" (108.020511)
STATE PLANE-COLO. CENTRAL-NAD 83
N = 1618357.700
E = 2288883.800

NAD 83 (SURFACE LOCATION)
LATITUDE = 39°30'14.21" (39.503947)
LONGITUDE = 108°01'08.83" (108.019119)
STATE PLANE-COLO. CENTRAL-NAD 83
N = 1618296.496
E = 2289274.611

PDOP = 2.4