

# T6S, R95W, 6th P.M.

## WILLIAMS PRODUCTION RMT COMPANY

Well location, FEDERAL PA 44-20, located as shown in Lot 8 of Section 20, T6S, R95W, 6th P.M., Garfield County, Colorado.

### SPOT ELEVATION

SPOT ELEVATION AT THE NORTHWEST CORNER OF SECTION 30, T5S, R95W, 6th P.M. TAKEN FROM THE FORKED GULCH QUADRANGLE, COLORADO, GARFIELD COUNTY, 7.5 MINUTE SERIES (TOPOGRAPHICAL MAP) PUBLISHED BY THE UNITED STATES DEPARTMENT OF THE INTERIOR, GEOLOGICAL SURVEY. SAID ELEVATION IS MARKED AS BEING 5966 FEET.

### BASIS OF BEARINGS

BASIS OF BEARINGS IS A G.P.S. OBSERVATION.

LINE	BEARING	LENGTH
L1	N00°12'34"W	198.17'
L2	N00°01'10"E	118.31'
L3	S89°37'52"W	253.21'
L4	N00°05'21"E	66.00'
L5	S89°57'16"W	66.00'
L6	N87°35'56"E	200.68'
L7	S89°44'21"W	184.35'
L8	S89°44'21"W	2633.57'



### CERTIFICATE

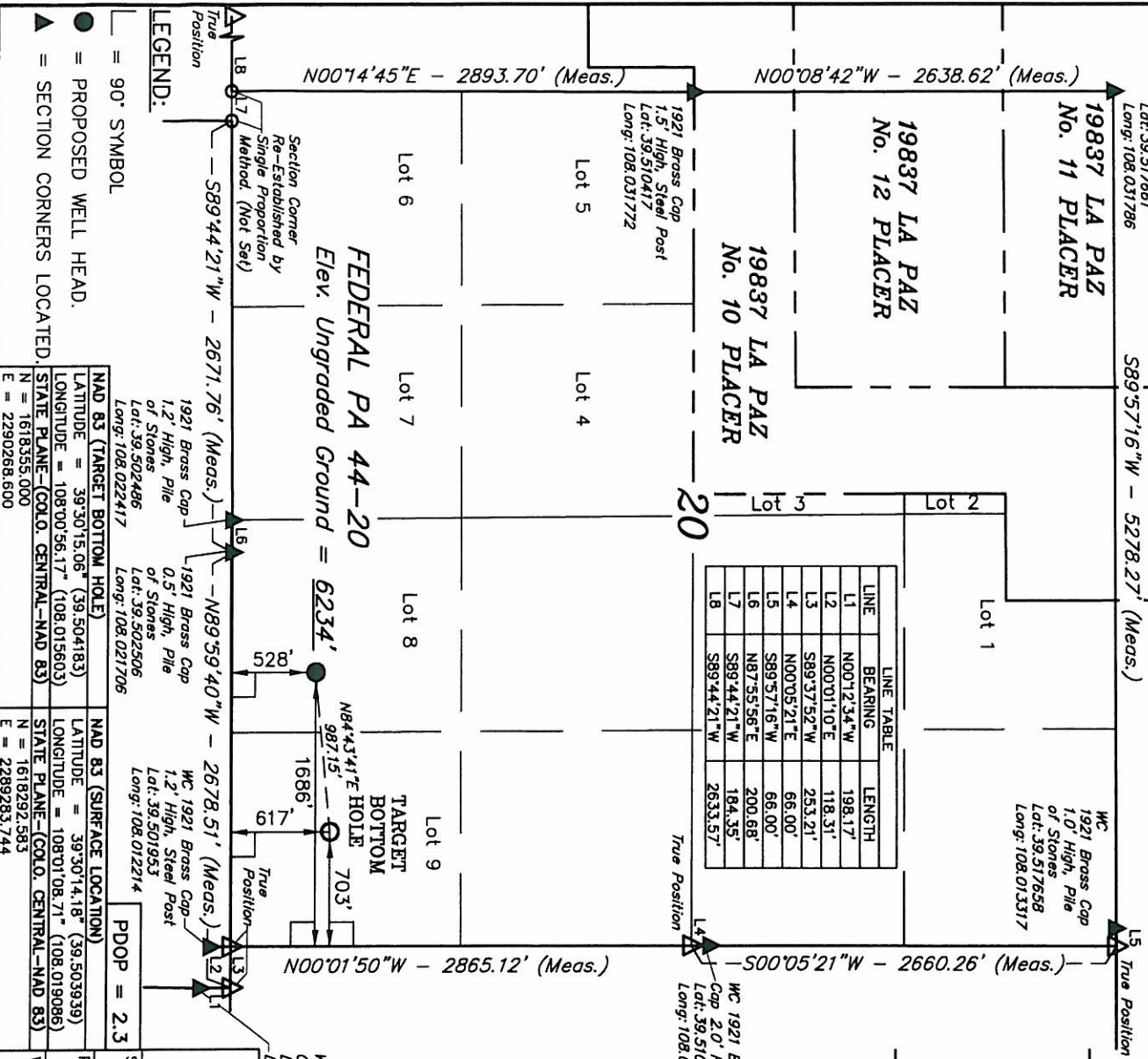
THIS IS TO CERTIFY THAT THE ABOVE PLAT WAS PREPARED FROM FIELD NOTES OF ACTUAL SURVEYS MADE BY ME OR UNDER MY SUPERVISION AND THAT THE SAID ARE TRUE AND CORRECT TO THE BEST OF MY KNOWLEDGE AND BELIEF.

Revised: 10-06-10 D.R.B.

REGISTERED LAND SURVEYOR  
REGISTRATION NO. 10292  
STATE OF COLORADO

**UTAH ENGINEERING & LAND SURVEYING**  
85 SOUTH 200 EAST - VERNAL, UTAH 84078  
(435) 789-1017

SCALE	1" = 1000'	DATE SURVEYED:	05-17-10	DATE DRAWN:	06-12-10
PARTY	B.H.	B.B.	D.R.B.	REFERENCES	G.L.O. PLAT
WEATHER	COOL	FILE	WILLIAMS PRODUCTION RMT COMPANY		



- = PROPOSED WELL HEAD.
- ▲ = SECTION CORNERS LOCATED.
- = 90° SYMBOL

NAD 83 (TARGET BOTTOM HOLE)	NAD 83 (SURFACE LOCATION)
LATITUDE = 39°30'15.06" (39.504183)	LATITUDE = 39°30'14.18" (39.503939)
LONGITUDE = 108°00'56.17" (108.015603)	LONGITUDE = 108°01'08.71" (108.019086)
STATE PLANE - COLO. CENTRAL - NAD 83	STATE PLANE - COLO. CENTRAL - NAD 83
N = 1618355.000	N = 1618297.583
E = 2290268.600	E = 2289283.744