

T6S, R95W, 6th P.M.

WILLIAMS PRODUCTION RMT COMPANY

Well location, FEDERAL PA 434-20, located as shown in the SW 1/4 SE 1/4 of Section 20, T6S, R95W, 6th P.M., Garfield County, Colorado.

BASIS OF ELEVATION

SPOT ELEVATION AT THE NORTHWEST CORNER OF SECTION 30, T5S, R95W, 6th P.M. TAKEN FROM THE FORKED GULCH QUADRANGLE, COLORADO, GARFIELD COUNTY, 7.5 MINUTE SERIES (TOPOGRAPHICAL MAP) PUBLISHED BY THE UNITED STATES DEPARTMENT OF THE INTERIOR, GEOLOGICAL SURVEY. SAID ELEVATION IS MARKED AS BEING 5966 FEET.

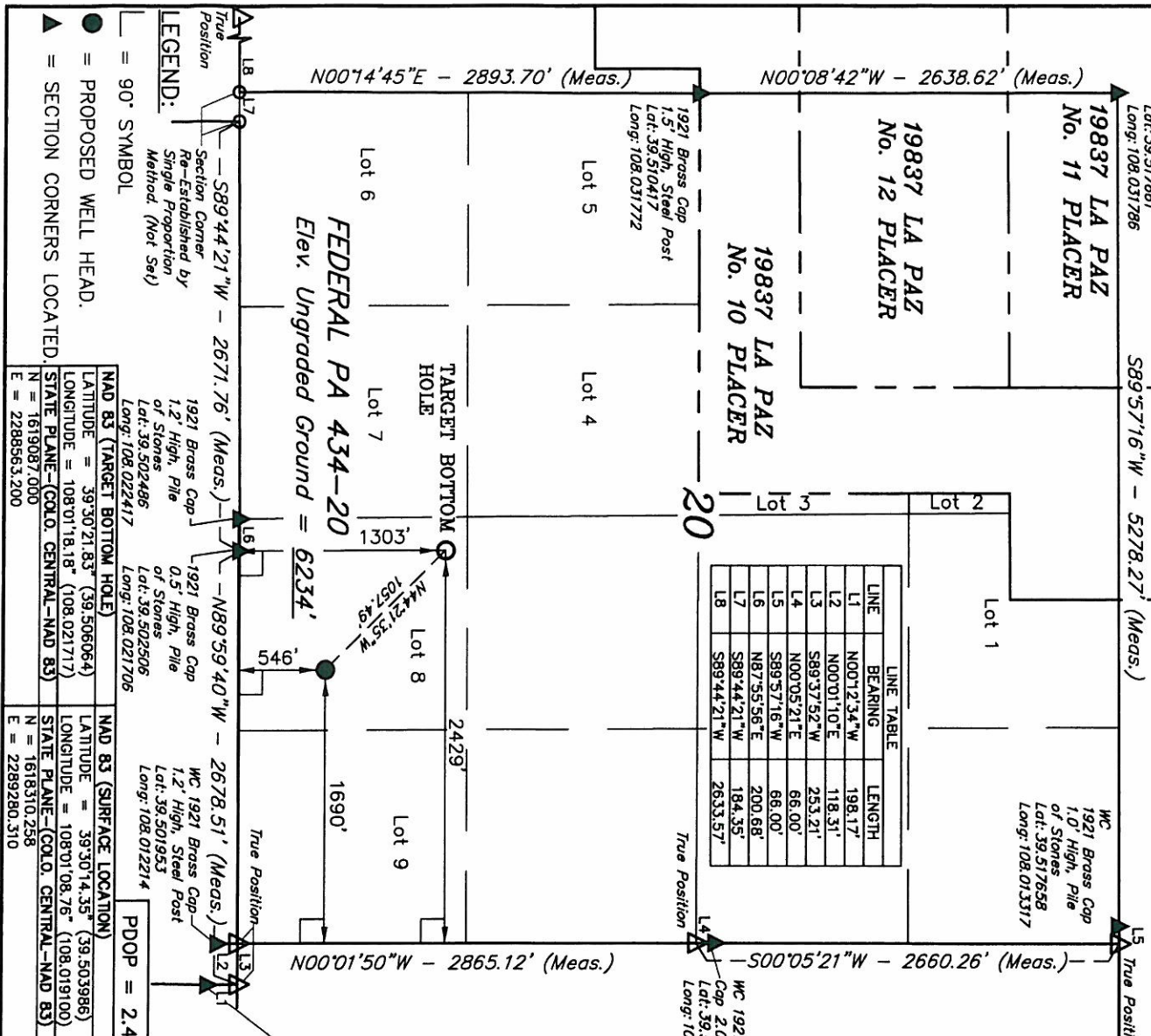
BASIS OF BEARINGS

BASIS OF BEARINGS IS A G.P.S. OBSERVATION.

NOTE:
SEE CURRENT FOOTAGE PLAT #6 FOR EXISTING IMPROVEMENT WITHIN 400' OF THE PROPOSED WELL DISTURBANCE.

WC 1921 Brass Cap 2.0' High
Lat: 39.510536
Long: 108.013108

LINE	BEARING	LENGTH
L1	N00°12'34"W	198.17'
L2	N00°01'10"E	118.31'
L3	S89°33'52"W	253.21'
L4	N00°05'21"E	66.00'
L5	S89°57'16"W	68.00'
L6	N87°55'56"E	200.68'
L7	S89°44'21"W	184.35'
L8	S89°44'21"W	2633.57'



NAD 83 (TARGET BOTTOM HOLE)		NAD 83 (SURFACE LOCATION)	
LATITUDE = 39°30'21.83" (39.5060664)	LATITUDE = 39°30'14.35" (39.503986)		
LONGITUDE = 108°01'18.18" (108.021717)	LONGITUDE = 108°01'08.76" (108.019100)		
STATE PLANE-COLO. CENTRAL-NAD 83		STATE PLANE-COLO. CENTRAL-NAD 83	
N = 1619087.000	N = 1618310.258		
E = 2288965.200	E = 2289280.310		
PDOP = 2.4			
SCALE	1" = 1000'	DATE SURVEYED:	05-17-10
PARTY	B.H. B.B. D.R.B.	DATE DRAWN:	06-12-10
WEATHER	COOL	REFERENCES	G.L.O. PLAT
FILE		WILLIAMS PRODUCTION RMT COMPANY	

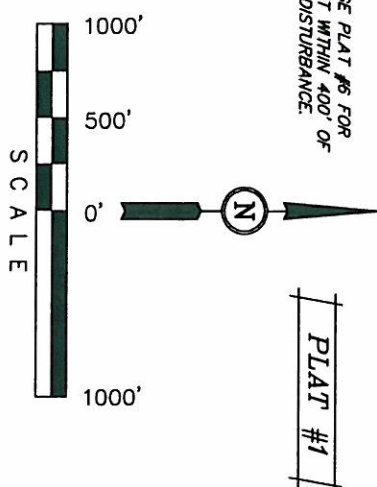
CERTIFICATE

THIS IS TO CERTIFY THAT THE ABOVE PLAT WAS PREPARED FROM FIELD NOTES OF ACTUAL SURVEYS MADE BY ME OR UNDER MY SUPERVISION AND THAT THE SAID ARE TRUE AND CORRECT TO THE BEST OF MY KNOWLEDGE AND BELIEF.

Revised: 10-06-10 D.R.B.

WC 1921 Brass Cap 1.2' High
Lat: 39.502167
Long: 108.013114

REGISTERED LAND SURVEYOR
REGISTRATION NO. 07492
STATE OF COLORADO



LEGEND:

- = PROPOSED WELL HEAD.
- ▲ = SECTION CORNERS LOCATED.
- = 90° SYMBOL

1921 Brass Cap 1.4' High, Steel Post
Lat: 39.517661
Long: 108.031786

1921 Brass Cap 1.5' High, Steel Post
Lat: 39.510417
Long: 108.031772

1921 Brass Cap 1.0' High, Pile of Stones
Lat: 39.517658
Long: 108.013317

1921 Brass Cap 1.2' High, Pile of Stones
Lat: 39.502496
Long: 108.022417

1921 Brass Cap 0.5' High, Pile of Stones
Lat: 39.502506
Long: 108.021706

WC 1921 Brass Cap 1.2' High, Steel Post
Lat: 39.501953
Long: 108.012214