

WILLIAMS PRODUCTION RMT COMPANY

PLAT #2_CONSTRUCTION LAYOUT FOR DOE 1-W-20
SECTION 20, T6S, R95W, 6th P.M.

SCALE: 1" = 60'

DATE: 05-17-10

DRAWN BY: D.R.B.

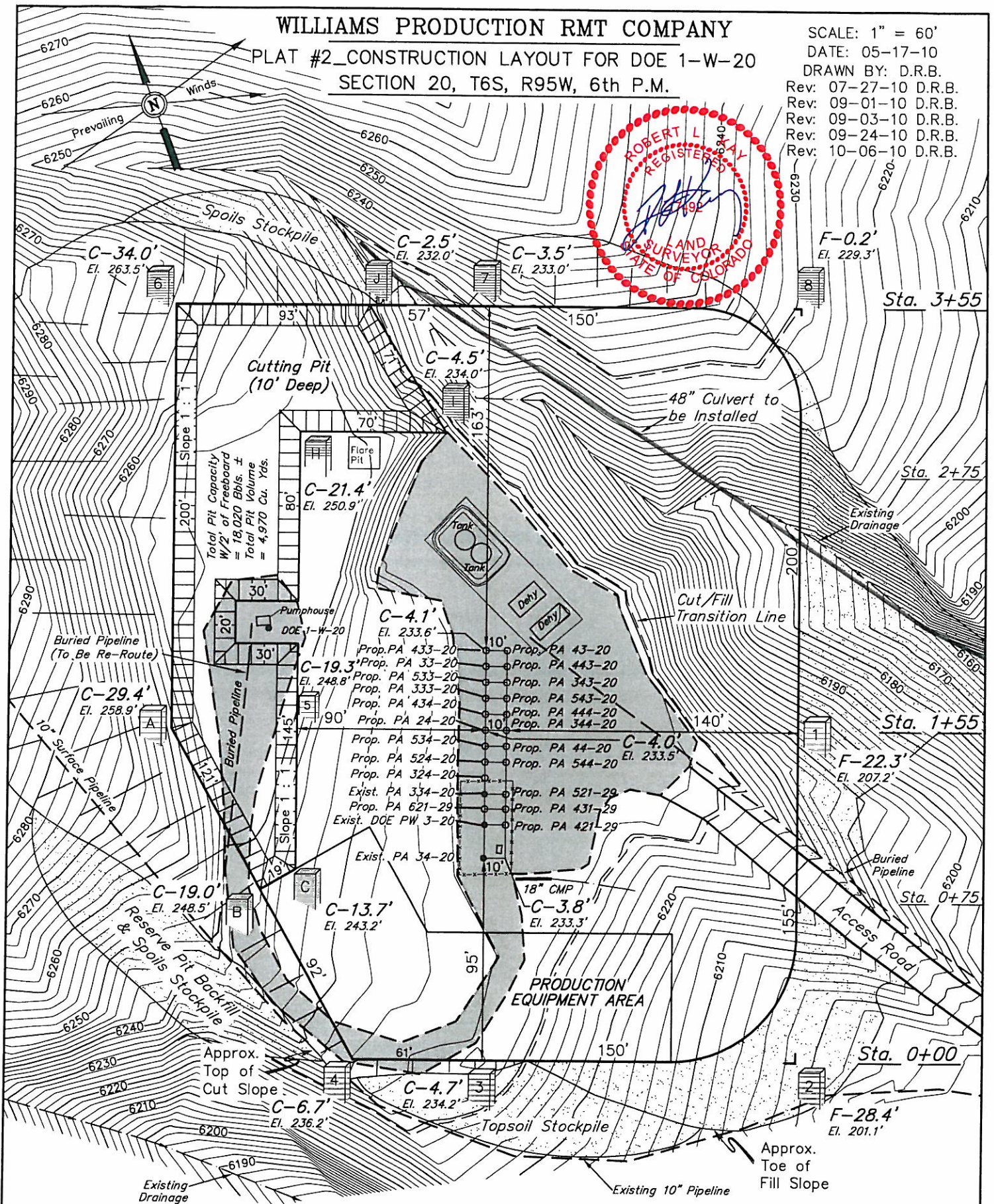
Rev: 07-27-10 D.R.B.

Rev: 09-01-10 D.R.B.

Rev: 09-03-10 D.R.B.

Rev: 09-24-10 D.R.B.

Rev: 10-06-10 D.R.B.



NOTE:
2' Contour Interval

Elev. Ungraded Ground At PA 24-20 Loc. Stake = 6233.5'
FINISHED GRADE ELEV. AT PA 24-20 LOC. STAKE = 6229.5'

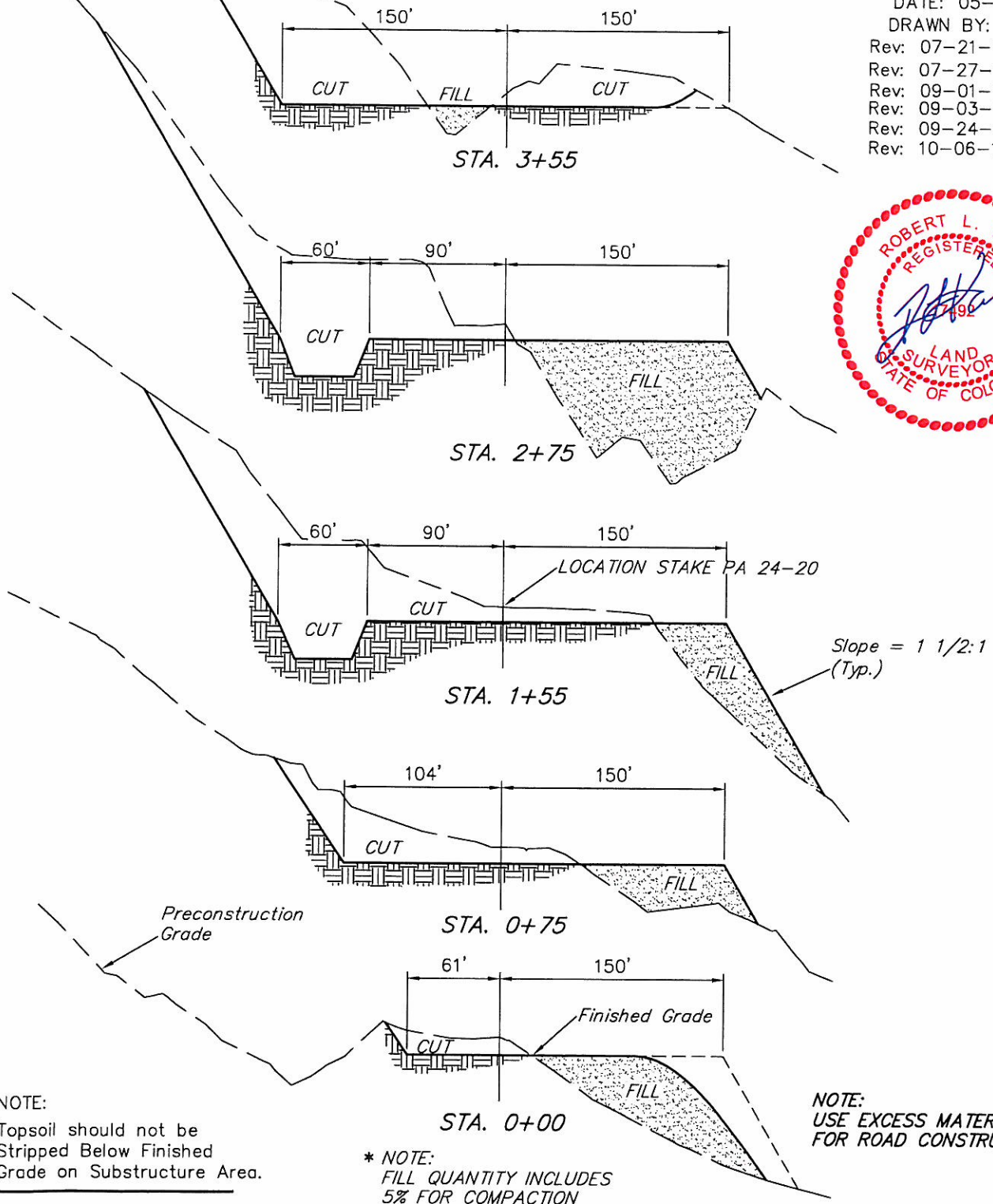
UINTAH ENGINEERING & LAND SURVEYING
85 So. 200 East * Vernal, Utah 84078 * (435) 789-1017

WILLIAMS PRODUCTION RMT COMPANY

PLAT #3_CONSTRUCTION LAYOUT
CROSS SECTION FOR DOE 1-W-20
SECTION 20, T6S, R95W, 6th P.M.

1" = 40'
X-Section
Scale
1" = 100'

DATE: 05-19-10
DRAWN BY: D.R.B.
Rev: 07-21-10 D.R.B.
Rev: 07-27-10 D.R.B.
Rev: 09-01-10 D.R.B.
Rev: 09-03-10 D.R.B.
Rev: 09-24-10 D.R.B.
Rev: 10-06-10 D.R.B.



NOTE:

Topsoil should not be Stripped Below Finished Grade on Substructure Area.

* NOTE:

FILL QUANTITY INCLUDES 5% FOR COMPACTION

NOTE:

USE EXCESS MATERIAL FOR ROAD CONSTRUCTION.

APPROXIMATE YARDAGES

(6") Topsoil Stripping = 2,470 Cu. Yds.
(New Construction Only)
Remaining Location = 47,000 Cu. Yds.
TOTAL CUT = 49,470 CU.YDS.
FILL = 32,830 CU.YDS.

EXCESS MATERIAL = 16,640 Cu. Yds.
Topsoil & Pit Backfill = 4,960 Cu. Yds.
(1/2 Pit Vol.)
EXCESS UNBALANCE = 11,680 Cu. Yds.
(After Interim Rehabilitation)

UINTAH ENGINEERING & LAND SURVEYING
85 So. 200 East * Vernal, Utah 84078 * (435) 789-1017