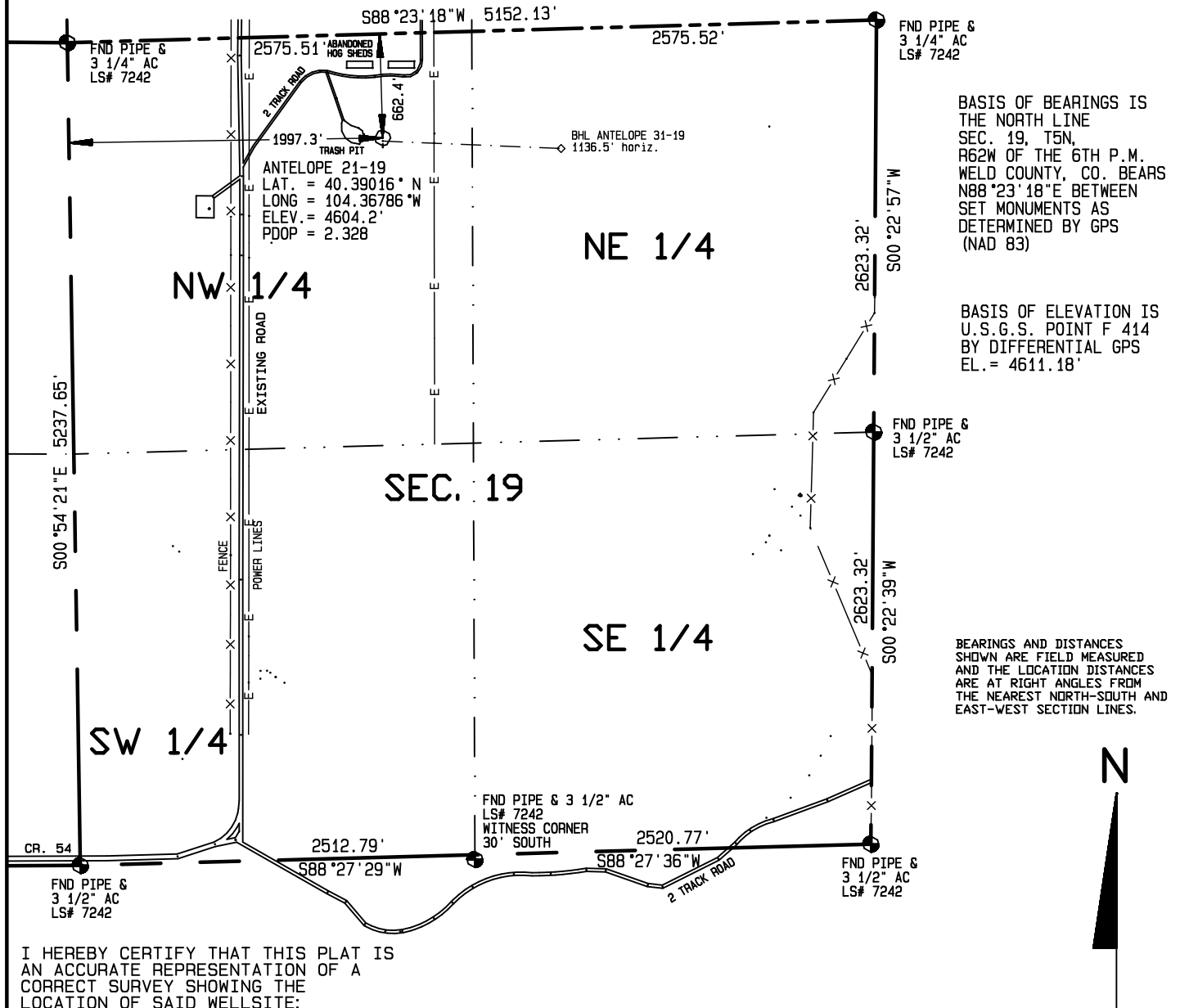


SURFACE HOLE LOCATIONS						BOTTOM HOLE LOCATIONS					
WELL	LAT.	LONG.	EL.	FNL	FWL	WELL	LAT.	LONG.	N/S	E/W	
21-19	40.39016°	104.36786°	4604.17'	662.4'	1997.3'	21-19	40.39016°	104.36786°	662.4' FNL	1997.3' FWL	
31-19	40.39011°	104.36786°	4604.65'	682.3'	1997.2'	31-19	40.38998°	104.36373°	761.2' FNL	2001.5' FEL	

Visible improvements within 400 feet of the location include: A trash pit 117' West, overhead power lines 327' East, and a track road 389' north.

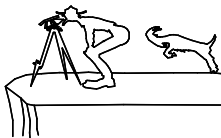


I HEREBY CERTIFY THAT THIS PLAT IS AN ACCURATE REPRESENTATION OF A CORRECT SURVEY SHOWING THE LOCATION OF SAID WELLSITE:

Dan Griggs PLS# 38018

CONTRACT SURVEYORS, LTD.
COMPLETE SURVEYING AND GLOBAL POSITIONING

2133 SOUTH BELLAIRE STREET #14
DENVER COLORADO 80222
(303) 756-3695



CSL# 10104-45

DATE OF FIELD WORK:

27 JULY, 2010

DATE OF DRAWING:

10 AUGUST, 2010

ANTELOPE 21-19 PAD SITE

. NE 1/4 NW 1/4 SEC. 19, T5N, R62W

BONANAZA CREEK ENERGY OPERATING COMPANY, LLC

WELD COUNTY, COLORADO