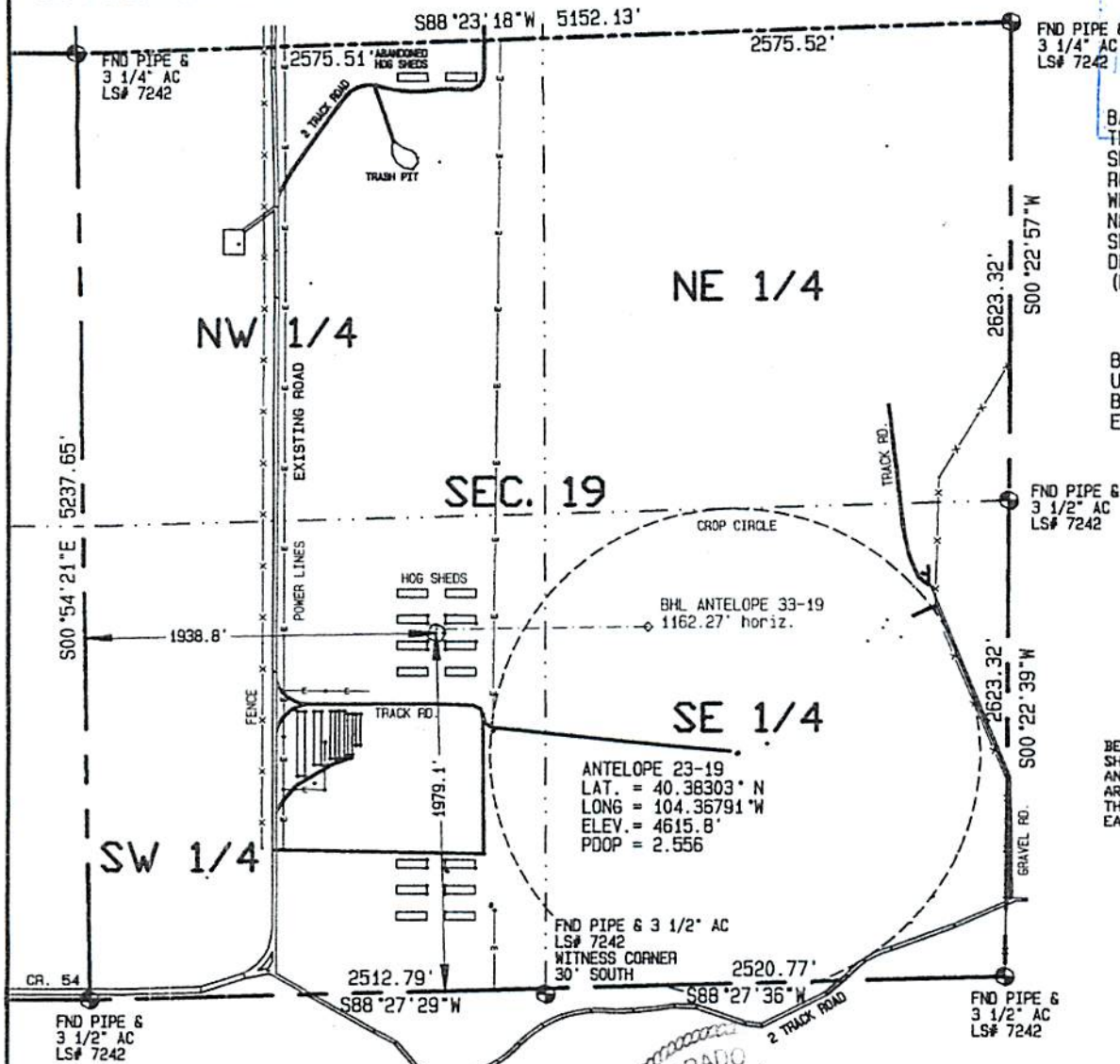


SURFACE HOLE LOCATIONS						BOTTOM HOLE LOCATIONS			
WELL	LAT.	LONG.	EL.	FSL	FWL	WELL	LAT.	LONG.	N/S
23-19	40.38303°	104.36791°	4615.83'	1979.1'	1938.8'	23-19	40.38303°	104.36791°	1979.1' FSL
33-19	40.38308°	104.36791°	4615.85'	1999.1'	1939.8'	33-19	40.38312°	104.36373°	1981.4' FSL
									1938.8' FWL
									1975.2' FEL

Visible improvements within 400 feet of the location include: Abandoned hog shed foundations, closest are 69' SE, 73' NE, 72' NW & 67' SW, overhead power lines 315' East, and a track road 388' South.



BASIS OF BEARINGS IS THE NORTH LINE SEC. 19, T5N, R62W OF THE 6TH P.M. WELD COUNTY, CO. BEARS N88°23'18"E BETWEEN SET MONUMENTS AS DETERMINED BY GPS (NAD 83)

BASIS OF ELEVATION IS U.S.G.S. POINT F 414 BY DIFFERENTIAL GPS EL. = 4611.18'

BEARINGS AND DISTANCES SHOWN ARE FIELD MEASURED AND THE LOCATION DISTANCES ARE AT RIGHT ANGLES FROM THE NEAREST NORTH-SOUTH AND EAST-WEST SECTION LINES.

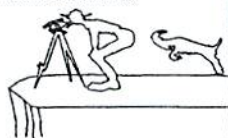
I HEREBY CERTIFY THAT THIS PLAT IS AN ACCURATE REPRESENTATION OF A CORRECT SURVEY SHOWING THE LOCATION OF SAID WELLSITE:



Dan Griggs PLS# 38018

CONTRACT SURVEYORS, LTD.
COMPLETE SURVEYING AND GLOBAL POSITIONING

2133 SOUTH BELLAIRE STREET #14
DENVER COLORADO 80222
(303) 756-3695



CSL# 10104-46

DATE OF FIELD WORK
JULY 28, 2010

DATE OF DRAWING
AUGUST 11, 2010

ANTELOPE 23-19 PAD SITE

NE 1/4 SW 1/4 SEC. 19, T5N, R62W

BONANAZA CREEK ENERGY OPERATING COMPANY, LLC

WELD COUNTY, COLORADO