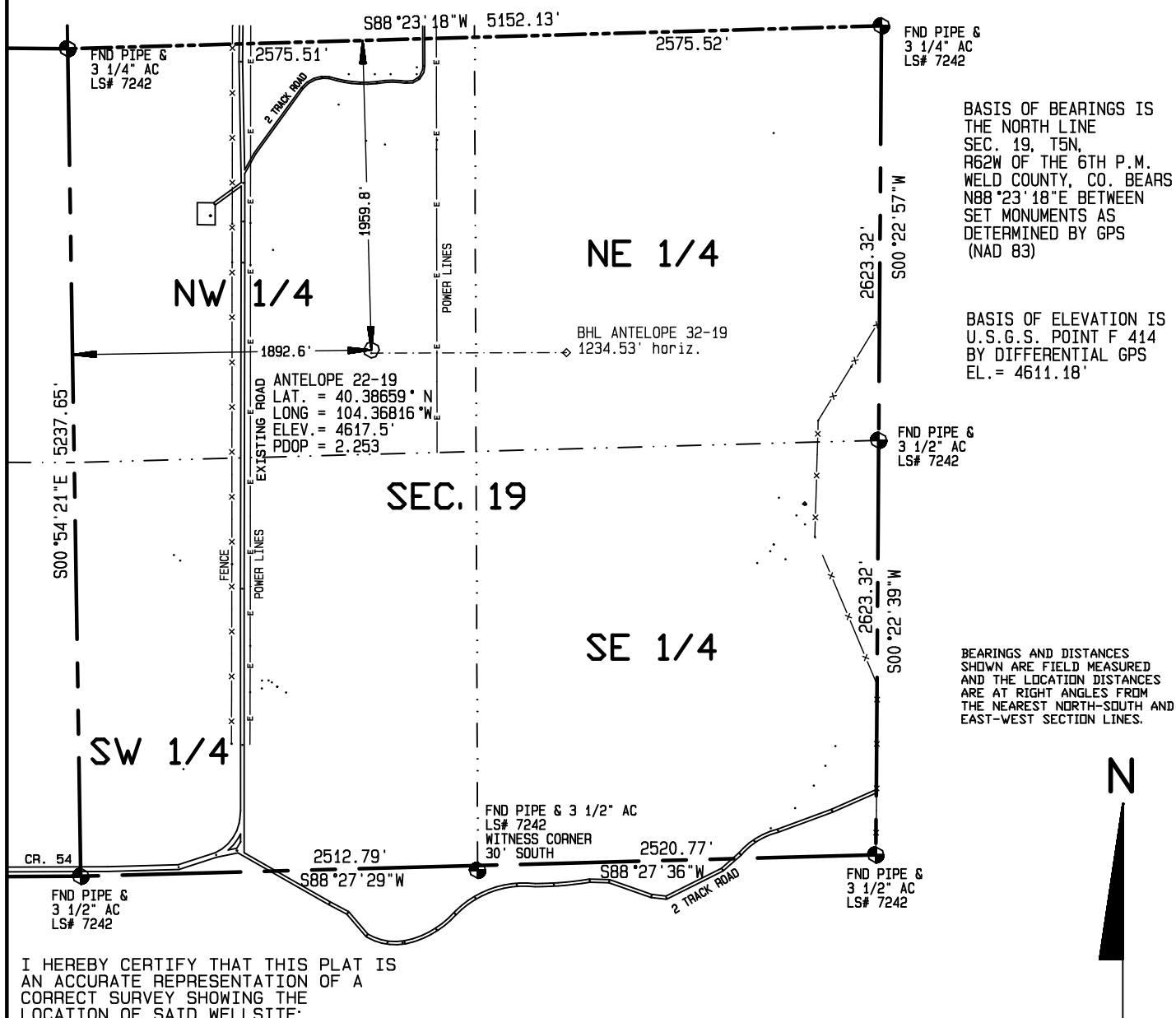


SURFACE HOLE LOCATIONS						BOTTOM HOLE LOCATIONS					
WELL	LAT.	LONG.	EL.	FNL	FWL	WELL	LAT.	LONG.	N/S	E/W	
22-19	40.38659°	104.36816°	4617.50'	1959.8'	1892.6'	22-19	40.38659°	104.36816°	1959.8' FNL	1892.6' FWL	
32-19	40.38654°	104.36816°	4617.50'	1979.7'	1891.2'	32-19	40.38655°	104.36373°	2011.0' FNL	1979.8' FEL	

There are no visible improvements within 400 feet of the location.



I HEREBY CERTIFY THAT THIS PLAT IS AN ACCURATE REPRESENTATION OF A CORRECT SURVEY SHOWING THE LOCATION OF SAID WELLSITE:

Dan Griggs PLS# 38018

CONTRACT SURVEYORS, LTD.
COMPLETE SURVEYING AND GLOBAL POSITIONING

2133 SOUTH BELLAIRE STREET #14
DENVER COLORADO 80222
(303) 756-3695



DATE OF FIELD WORK:

10 JUNE, 2010

DATE OF DRAWING:

AUGUST 11, 2010

ANTELOPE 22-19 PAD SITE

. SE 1/4 NW 1/4 SEC. 19, T5N, R62W

BONANAZA CREEK ENERGY OPERATING COMPANY, LLC

WELD COUNTY, COLORADO

CSL# 10104-23

1000 500 0 1000



Scale 1" = 1000'