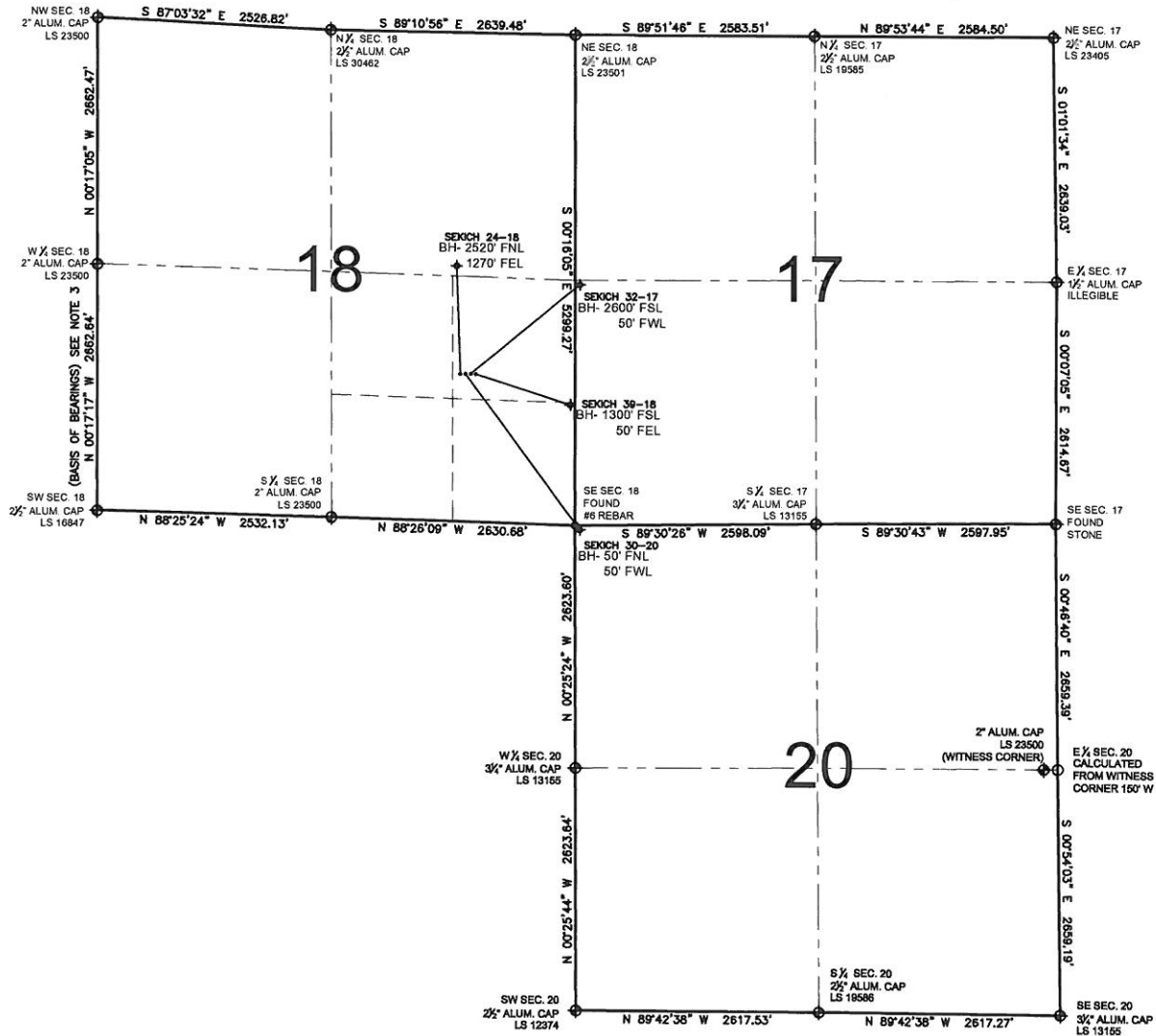


PAD DRAWING - SEKICH 4 PAD

SECTION 18, TOWNSHIP 3 NORTH, RANGE 67 WEST, 6TH P.M.



LEGEND

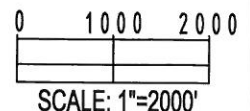
- = EXISTING MONUMENT
 = BOTTOM HOLE
 BH= BOTTOM HOLE
 = PROPOSED WELL
 = EXISTING WELL

NOTES:

- THIS SURVEY WAS DONE BY GPS METHODS AND CONFORMS TO THE MINIMUM STANDARDS SET BY THE C.O.G.C.C., RULE NO. 215
- ELEVATIONS SHOWN AT THE WELL HEAD, AS WELL AS HORIZONTAL CONTROL, ARE BASED ON GPS-RTK VALUES DERIVED FROM DOING 2-HOUR STATIC GPS SESSIONS AND REDUCTIONS USING O.P.U.S. SOLUTIONS.
VERTICAL = NAVD88; HORIZONTAL = NAD83/92
- THE BEARINGS SHOWN HEREON ARE BASED ON GPS OBSERVATIONS BETWEEN THE MONUMENTS SHOWN HEREON AS FOUND ON THE FIELD DATE BELOW.
- DISTANCES SHOWN ARE AT GROUND LEVEL, AS MEASURED IN THE FIELD, WITH TIES TO WELLS MEASURED AT A PERPENDICULAR TO SECTION LINES.

NOTES:

- SEKICH 24-18 TO BE AT 1593' FSL, 1274' FEL.
 BOTTOM HOLE AT 2520' FNL & 1270' FEL
 SEKICH 30-20 TO BE AT 1593' FSL, 1258' FEL.
 BOTTOM HOLE AT 50' FNL & 50' FWL.
 SEKICH 32-17 TO BE AT 1592' FSL, 1242' FEL.
 BOTTOM HOLE AT 2600' FSL & 50' FWL.
 SEKICH 39-18 TO BE AT 1592' FSL, 1226' FEL.
 BOTTOM HOLE AT 1300' FSL & 50' FEL.



REVISIONS

INITIAL	DATE
SMF	09-16-10

PREPARED BY:

PFS

Petroleum Field Services, LLC
1801 W. 13th Ave.
Denver, CO 80204



KERR-MCGEE OIL & GAS ONSHORE LP

FIELD DATE:
06-18-10

DRAWING DATE:
06-28-10

BY:
CAM

PAD NAME:
SEKICH 4 PAD

SURFACE LOCATION:

WELD COUNTY, COLORADO
NE 1/4 SE 1/4, SEC. 18, T3N, R67W