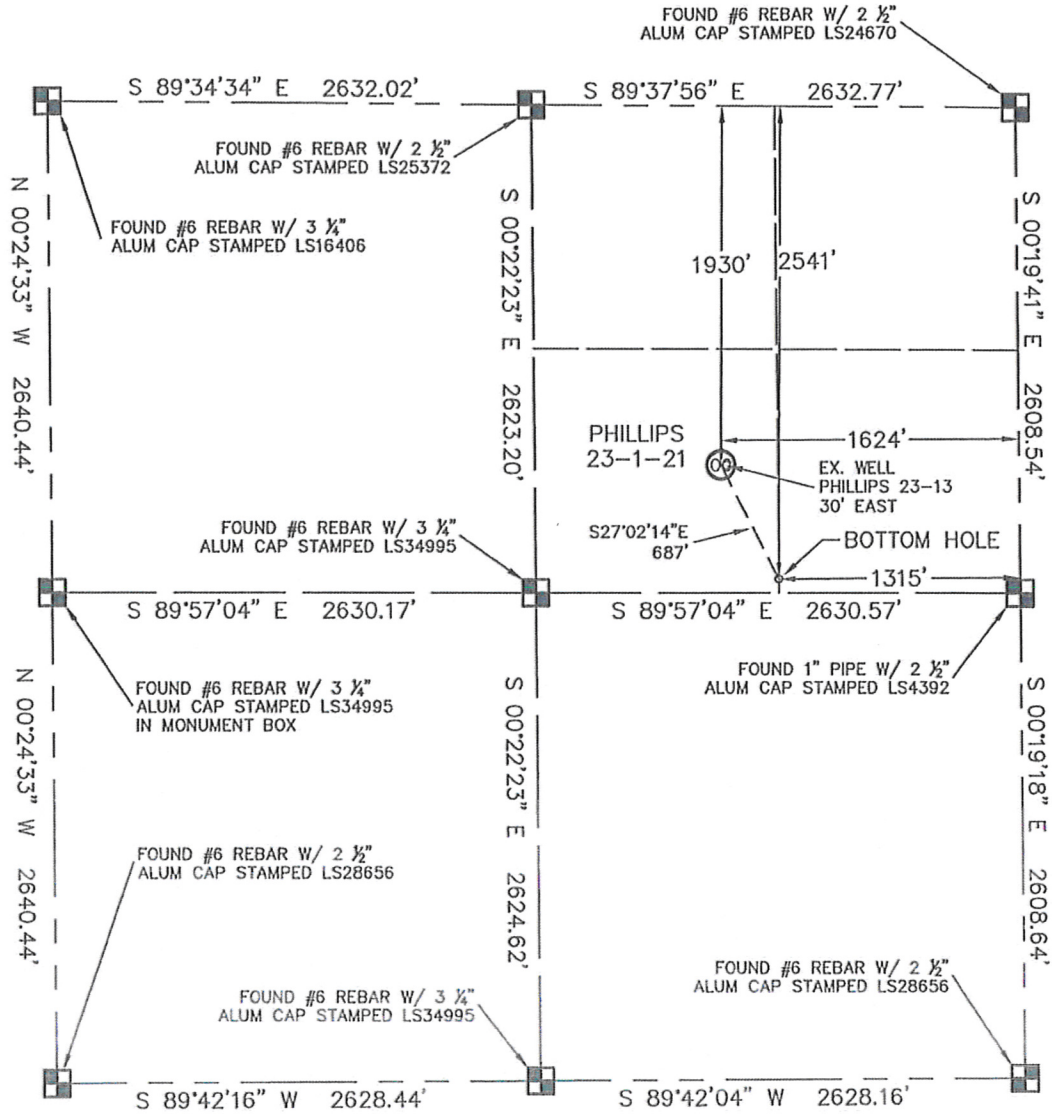


WELL LOCATION CERTIFICATE

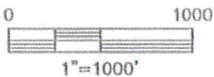
THIS MAP DOES NOT REPRESENT A BOUNDARY SURVEY

SECTION: 23
TOWNSHIP: 5N
RANGE: 67W



In accordance with a request from JOE JOHNSON with Noble Energy Inc. King Surveyors Inc. has determined the surface location of the PHILLIPS 23-1-21 to be 1930' from the NORTH line and 1624' from the EAST line and the bottom hole to be 2541' from the NORTH line and 1315' from the EAST line, as measured at right angles, from the section lines of Section 23, Township 5 North, Range 67 West of the Sixth Principal Meridian, County of Weld, State of Colorado.

I hereby state that this Well Location Certificate was prepared by me, or under my direct supervision, that the fieldwork was completed on 4-26-2010, for and on behalf of Noble Energy Inc. That this is not a Land Survey Plat or an Improvement Survey Plat, and that it is not to be relied upon for establishment of fence, building, or other future improvement lines.



NOTE:

- 1) Bearings shown are Grid Bearings of the Colorado State Plane Coordinate System, North Zone, North American Datum 1983/92. The lineal dimensions as contained herein are based upon the "U.S. Survey Foot."
- 2) Ground elevations are based on an observed GPS elevation (NAVD 1988 DATUM).
- 3) NEAREST EXISTING WELL: PHILLIPS 23-13 30' EAST
- 4) IMPROVEMENTS: See VISIBLE IMPROVEMENTS exhibit for all visible improvements within 400' of well head.
- 5) SURFACE USE: CROP FIELD; OIL & GAS WELL AND ROAD



SURFACE LOCATION
LATITUDE: 40.38697N
LONGITUDE: 104.85677W
PDOP: 1.2
ELEV: 4965'
1/4,1/4: SW1/4 NE1/4
NEAREST PROPERTY LINE: 1007' WEST

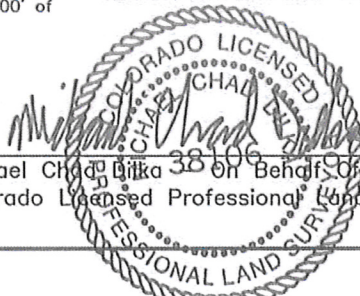
BOTTOM HOLE
LATITUDE: 40.38528N
LONGITUDE: 104.85566W

NOTE

According to Colorado law, you must commence any legal action based upon any defect in this W.L.C. within three years after you discover such defect. In no event, may any action based upon any defect in this survey be commenced more than ten years after the date of the certificate shown hereon. (13-80-105 C.R.S.)

LEGEND

-  = ALIQUOT MONUMENT AS DESCRIBED
-  = CALCULATED POSITION



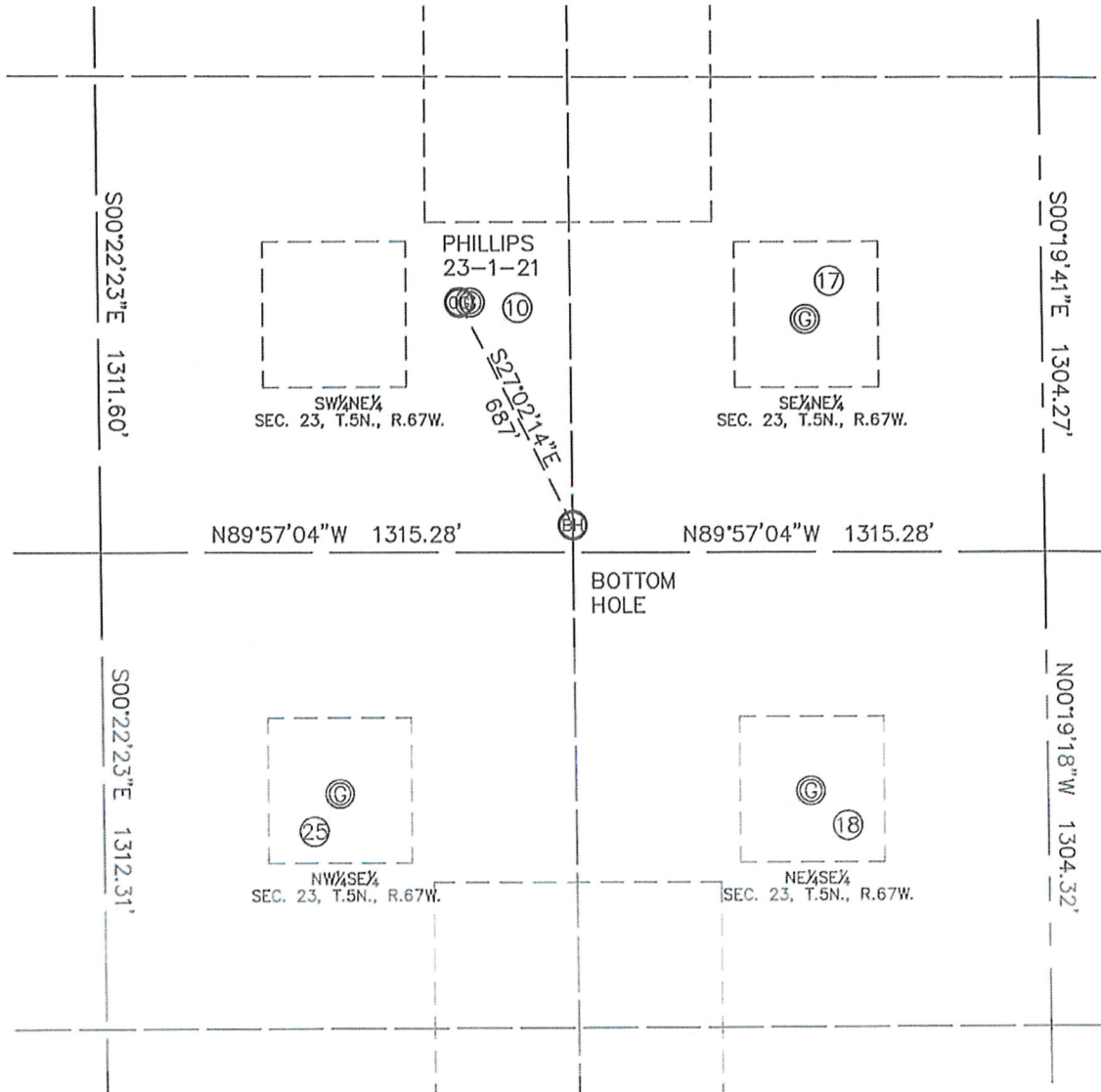
Michael Chad Bilka on Behalf of King Surveyors, Inc.
Colorado Licensed Professional Land Surveyor #38106

5-18-2010

PROJECT#: 2010144

SITE SKETCH

SECTION: 23
TOWNSHIP: 5N
RANGE: 67W



⑩
PHILLIPS 23-13
SW 1/4 NE 1/4
1930' FNL
1594' FEL
LAT-40.38697N
LONG-104.85666W
PDOP: 1.5
ELEV: 4967'

⑪
PHILLIPS 23-14
SE 1/4 NE 1/4
1972' FNL
661' FEL
LAT-40.38682N
LONG-104.85331W
PDOP: 1.3
ELEV: 4984'

⑫
PHILLIPS 23-41
NE 1/4 SE 1/4
1956' FSL
661' FEL
LAT-40.38326N
LONG-104.85332W
PDOP: 1.4
ELEV: 4991'

⑬
PHILLIPS 23-42
NW 1/4 SE 1/4
1956' FSL
1971' FEL
LAT-40.38327N
LONG-104.85802W
PDOP: 1.5
ELEV: 4987'

