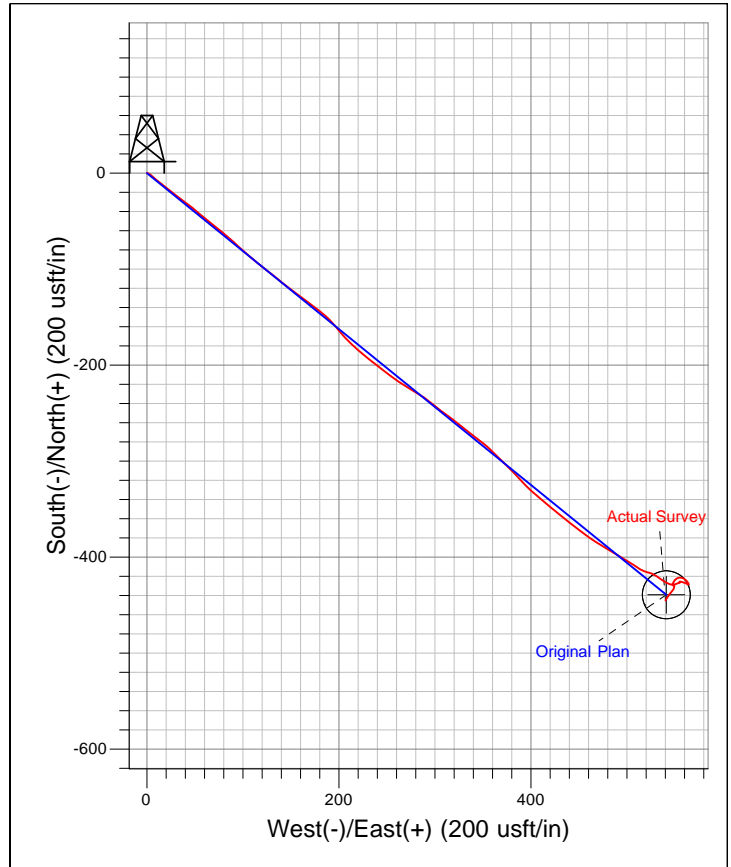
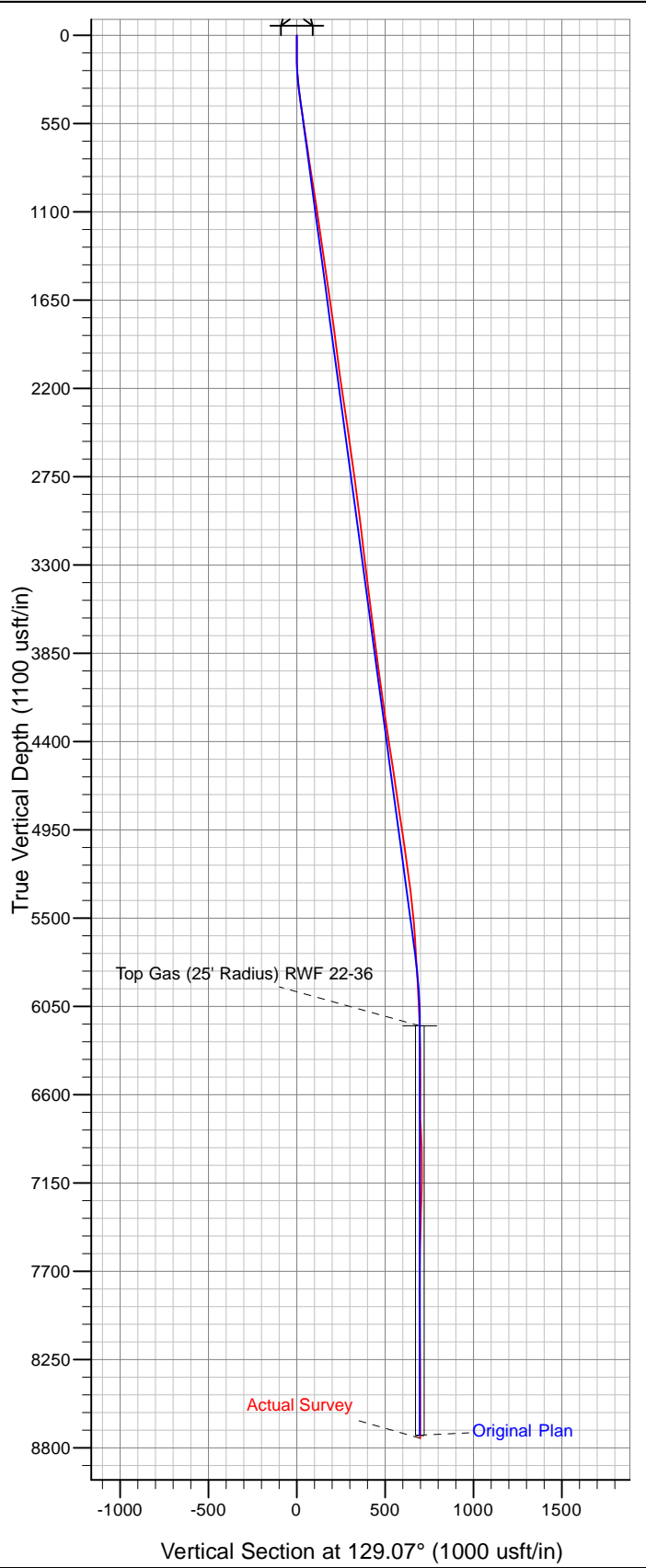




Well Name: RWF 22-36
 Surface Location: GV 15-36 Pad
 North American Datum 1983 , US State Plane 1983. Colorado Central Zone
 Ground Elevation: 6387.0

+N/-S	+E/-W	Northing	Easting	Latitude	Longitude	Slot
0.0	0.0	1610113.30	2339705.80	39° 29' 6.690 N	107° 50' 22.937 W	A11

KB @ 6413.0usft (Nabors 576 (26' RKB) rjc)



Azimuths to True North
 Magnetic North: 10.39°
 Magnetic Field
 Strength: 52347.0snT
 Dip Angle: 65.78°
 Date: 8/10/2010
 Model: IGRF2010