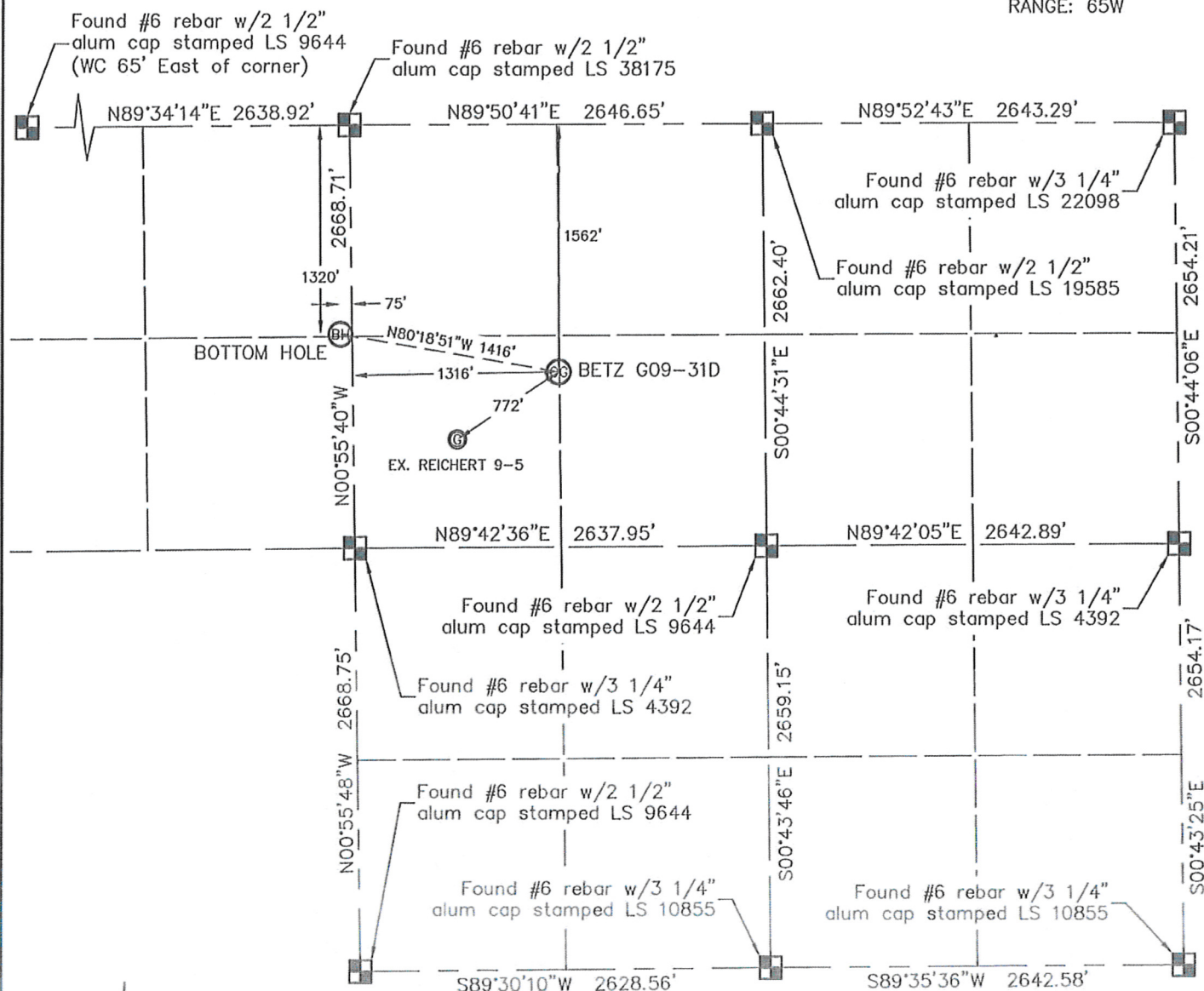


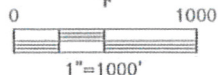
WELL LOCATION CERTIFICATE

THIS MAP DOES NOT REPRESENT A BOUNDARY SURVEY

SECTION: 9
TOWNSHIP: 4N
RANGE: 65W

In accordance with a request from BEAU FRITZ with Noble Energy Inc. King Surveyors Inc. has determined the surface location of the BETZ G09-31D to be 1562' from the North line and 1316' from the West line, as measured at right angles, from the section lines of Section 9, Township 4 North, Range 65 West and the bottom hole to be 1320' from the North line and 75' from the East line, as measured at right angles, from the section lines of Section 9, Township 4 North, Range 65 West of the Sixth Principal Meridian, County of Weld, State of Colorado.

I hereby state that this Well Location Certificate was prepared by me, or under my direct supervision, that the fieldwork was completed on 6-15-2010, for and on behalf of Noble Energy Inc. That this is not a Land Survey Plat or an Improvement Survey Plat, and that it is not to be relied upon for establishment of fence, building, or other future improvement lines.



NOTE:

- 1) Bearings shown are Grid Bearings of the Colorado State Plane Coordinate System, North Zone, North American Datum 1983/2007. The lineal dimensions as contained herein are based upon the "U.S. Survey Foot."
- 2) Ground elevations are based on an observed GPS elevation (NAVD 1988 DATUM).
- 3) NEAREST EXISTING WELL: REICHERT 9-5 772' SW
- 4) IMPROVEMENTS: See VISIBLE IMPROVEMENTS exhibit for all visible improvements within 400' of well head.
- 5) SURFACE USE: CROP FIELD

SURFACE LOCATION
LATITUDE: 40.33007°N
LONGITUDE: 104.67287°W
PDOP: 1.3
ELEV: 4712'
1/4, 1/4: SW 1/4 NW 1/4
NEAREST PROPERTY LINE: 1103' SOUTH

BOTTOM HOLE
LATITUDE: 40.33076°N
LONGITUDE: 104.67786°W

NOTE:

According to Colorado law, you must commence any legal action based upon any defect in this W.L.C. within three years after you discover such defect. In no event, may any action based upon any defect in this survey be commenced more than ten years after the date of the certificate shown hereon. (13-80-105 C.R.S.)

LEGEND

- = ALIQUOT MONUMENT AS DESCRIBED
○ = CALCULATED POSITION

Michael Chad Dillk - On Behalf Of King Surveyors, Inc.
Colorado Licensed Professional Land Surveyor #38106
PROJECT#: 2010229

6/22/2010

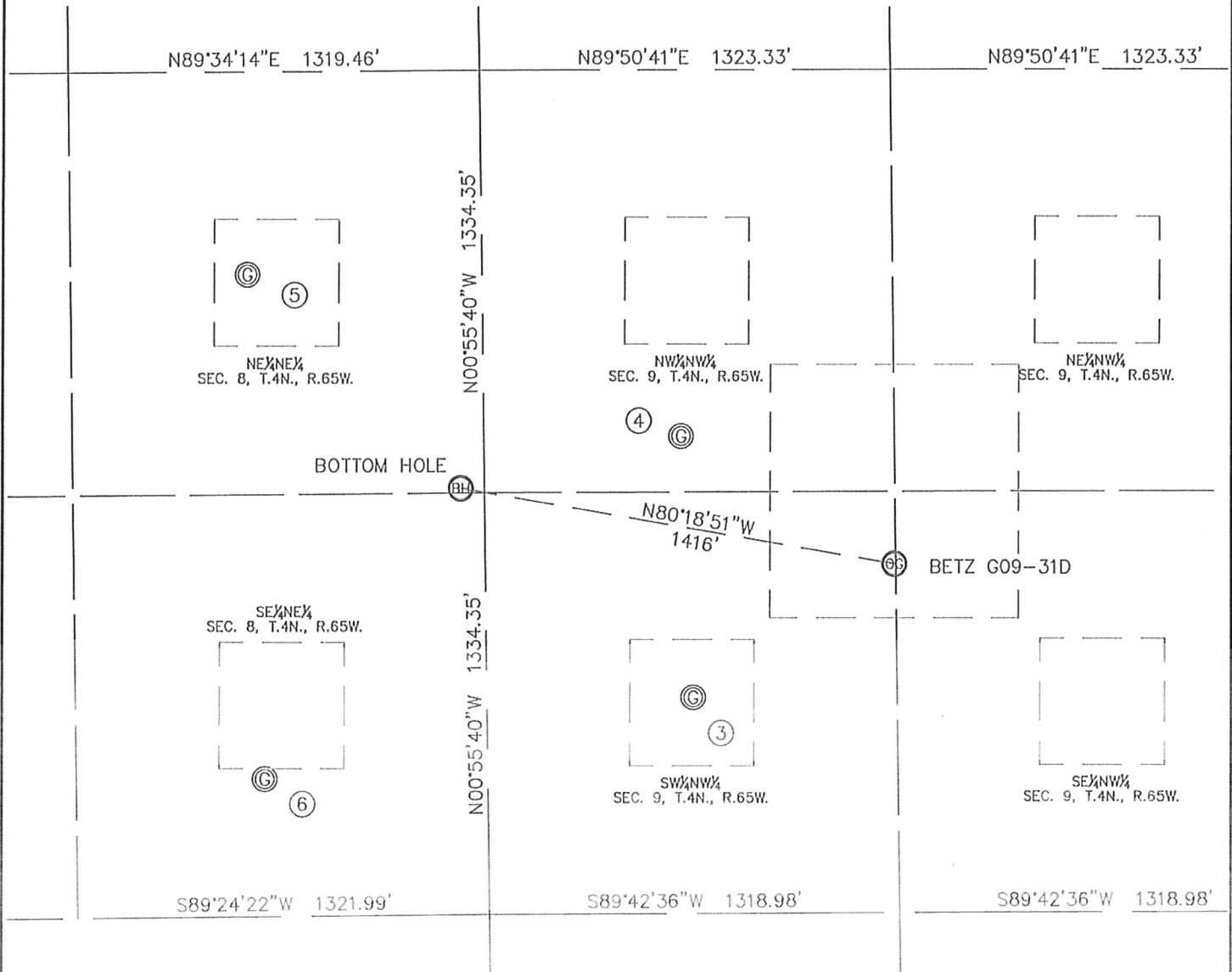
KING SURVEYORS, INC.

650 E. GARDEN DR.

WINDSOR, CO 80550

SITE SKETCH

SECTION: 9
TOWNSHIP: 4N
RANGE: 65W



③

REICHERT 9-5
SW 1/4 NW 1/4 SEC 9
1984' FNL
664' FWL
LAT-40.32892°N
LONG-104.67520°W
PDOP: 1.8
ELEV: 4713'

④

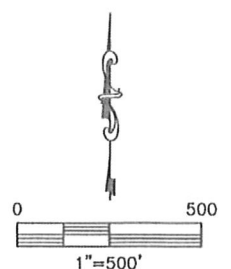
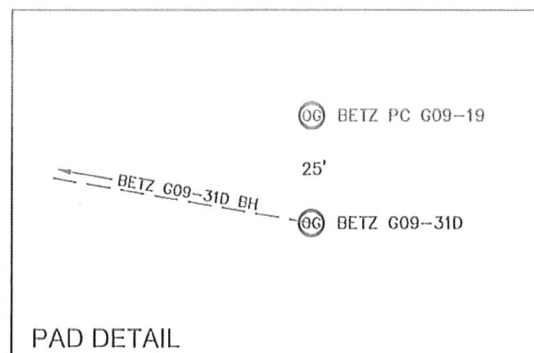
REICHERT 9-3
NW 1/4 NW 1/4 SEC 9
1156' FNL
636' FWL
LAT-40.33119°N
LONG-104.67532°W
PDOP: 1.4
ELEV: 4706'

⑤

LEHAN 8-1
NE 1/4 NE 1/4 SEC 8
641' FNL
753' FEL
LAT-40.33262°N
LONG-104.68031°W
PDOP: 1.0
ELEV: 4685'

⑥

LEHAN 4
SE 1/4 NE 1/4 SEC 8
2236' FNL
718' FEL
LAT-40.32825°N
LONG-104.68015°W
PDOP: 1.7
ELEV: 4690'



PROJECT#: 2010229