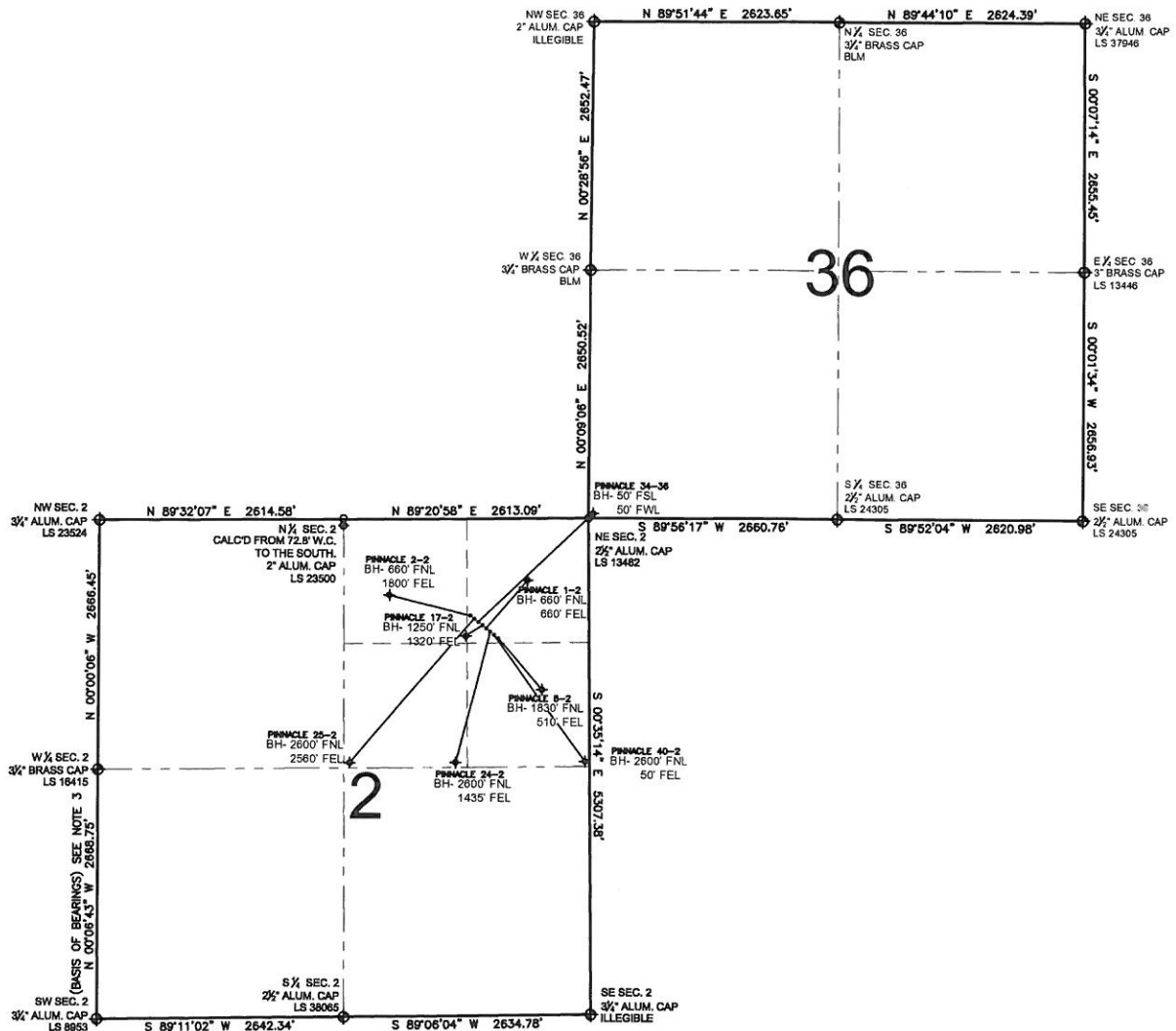


PAD DRAWING - PINNACLE 8 PAD

SECTION 2, TOWNSHIP 1 NORTH, RANGE 68 WEST, 6TH P.M.



LEGEND

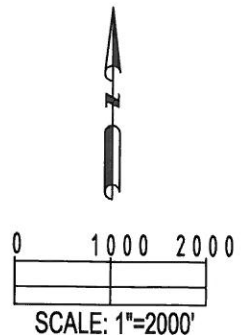
- = EXISTING MONUMENT
 = BOTTOM HOLE
 BH= BOTTOM HOLE
 = PROPOSED WELL
 = EXISTING WELL

NOTES:

- THIS SURVEY WAS DONE BY GPS METHODS AND CONFORMS TO THE MINIMUM STANDARDS SET BY THE C.O.G.C.C., RULE NO. 215
- ELEVATIONS SHOWN AT THE WELL HEAD, AS WELL AS HORIZONTAL CONTROL, ARE BASED ON GPS-RTK VALUES DERIVED FROM DOING 2-HOUR STATIC GPS SESSIONS AND REDUCTIONS USING O.P.U.S. SOLUTIONS.
VERTICAL = NAVD88; HORIZONTAL = NAD83/92
- THE BEARINGS SHOWN HEREON ARE BASED ON GPS OBSERVATIONS BETWEEN THE MONUMENTS SHOWN HEREON AS FOUND ON THE FIELD DATE BELOW.
- DISTANCES SHOWN ARE AT GROUND LEVEL, AS MEASURED IN THE FIELD, WITH TIES TO WELLS MEASURED AT A PERPENDICULAR TO SECTION LINES.

NOTES:

- PINNACLE 8-2 TO BE AT 1104' FNL, 1186' FEL.
 BOTTOM HOLE AT 1830' FNL & 510' FEL.
 PINNACLE 40-2 TO BE AT 1097' FNL, 1194' FEL.
 BOTTOM HOLE AT 2600' FNL & 50' FEL.
 PINNACLE 24-2 TO BE AT 1091' FNL, 1202' FEL.
 BOTTOM HOLE AT 2600' FNL & 1435' FEL.
 PINNACLE 1-2 TO BE AT 1085' FNL, 1209' FEL.
 BOTTOM HOLE AT 660' FNL & 660' FEL.
 PINNACLE 17-2 TO BE AT 1078' FNL, 1217' FEL.
 BOTTOM HOLE AT 1250' FNL & 1320' FEL.
 PINNACLE 34-36 TO BE AT 1072' FNL, 1225' FEL.
 BOTTOM HOLE AT 50' FSL & 50' FWL.
 PINNACLE 25-2 TO BE AT 1066' FNL, 1232' FEL.
 BOTTOM HOLE AT 2600' FNL & 2560' FEL.
 PINNACLE 2-2 TO BE AT 1059' FNL, 1240' FEL.
 BOTTOM HOLE AT 660' FNL & 1800' FEL.



REVISIONS

INITIAL	DATE
SMF	08-30-10

PREPARED BY:

PFS llc

Petroleum Field Services, LLC
1801 W. 13th Ave.
Denver, CO 80204

KERR-MCGEE OIL & GAS ONSHORE LP

FIELD DATE:
06-11-10

DRAWING DATE:
07-27-10

BY:
SMF

PAD NAME:
PINNACLE 8 PAD

SURFACE LOCATION:

WELD COUNTY, COLORADO
NE 1/4 NE 1/4, SEC. 2, T1N, R68W