



# **ANADARKO PETROLEUM CORP.**

**ANADARKO COLORADO NORTHERN ZONE NAD 83**

**WELD\_WASTE 6-21**

**WASTE 25-21**

**WASTE 25-21**

**Plan: WASTE 25-21 (wp01)**

## **Standard Planning Report**

**05 October, 2010**





Project: ANADARKO COLORADO NORTHERN ZONE NAD 83  
 Site: WELD\_WASTE 6-21  
 Well: WASTE 25-21  
 Wellbore: WASTE 25-21  
 Section:  
 SHL:  
 Design: WASTE 25-21 (wp01)  
 Latitude: 40° 2' 18.614 N  
 Longitude: 105° 0' 41.162 W  
 GL: 5213.0  
 KB: WELL @ 5213.0ft (Original Well Elev)



**Weatherford®**



Azimuths to True North  
 Magnetic North: 9.02°  
 Magnetic Field  
 Strength: 52966.7snT  
 Dip Angle: 66.75°  
 Date: 10/4/2010  
 Model: BGGM2010

#### FORMATION TOP DETAILS

TVDPath	MDPath	Formation
4263.0	4421.5	PK
4763.0	4921.8	SX
7545.0	7703.8	NIO
7953.0	8111.8	CD
8030.0	8188.8	GH
8383.0	8541.8	J

#### CASING DETAILS

TVD	MD	Name	Size
950.0	950.0	9 5/8"	9-5/8

#### SECTION DETAILS

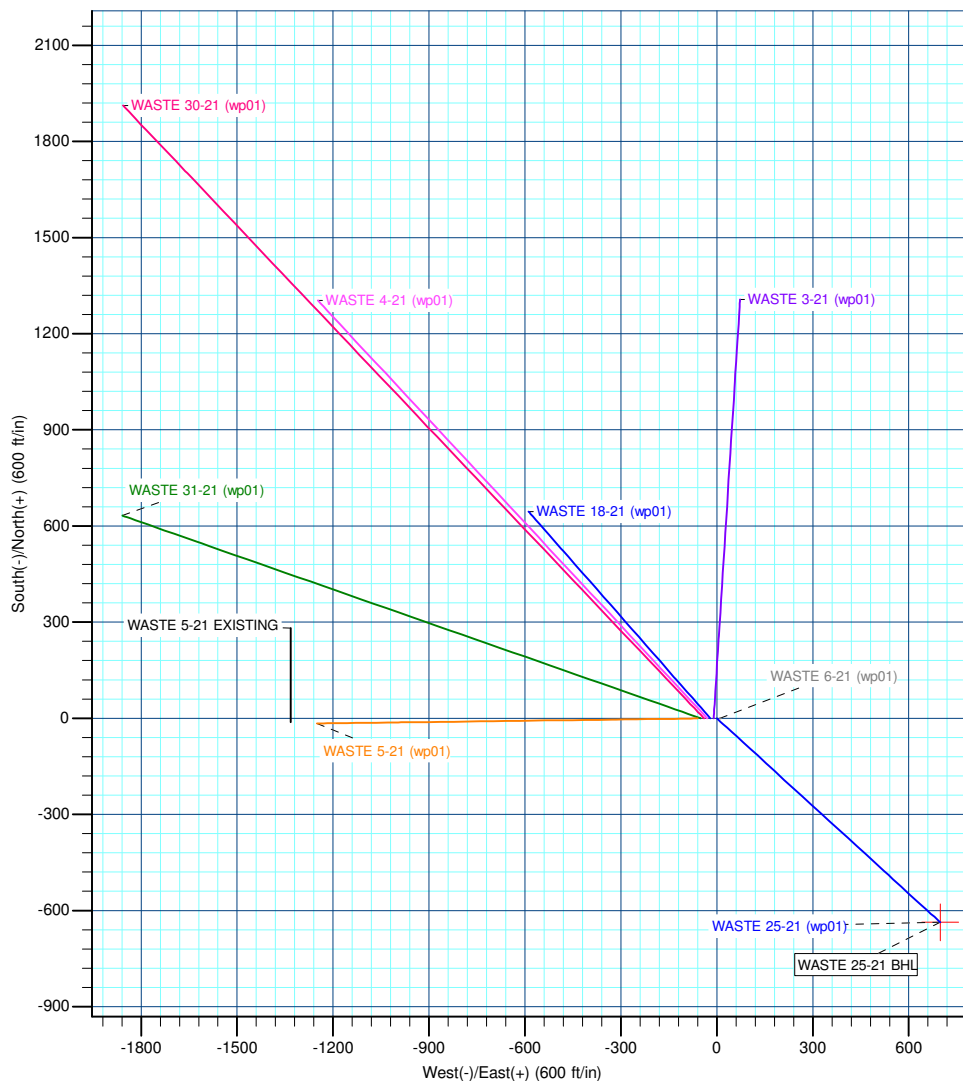
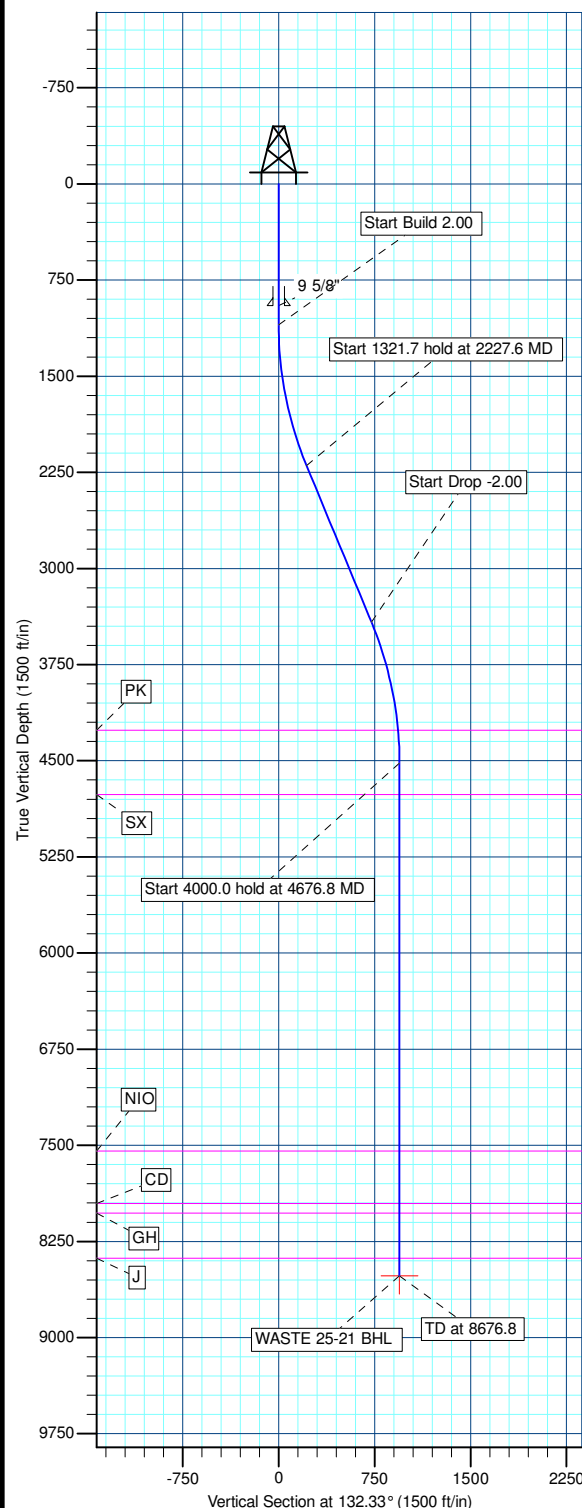
MD	Inc	Azi	TVD	+N-S	+E-W	DLeg	TFace	VSec	Annotation
0.0	0.00	0.00	0.0	0.0	0.0	0.00	0.00	0.0	
1100.0	0.00	0.00	1100.0	0.0	0.0	0.00	0.00	0.0	Start Build 2.00
2227.6	22.55	132.33	2198.7	-147.5	161.9	2.00	132.33	219.1	Start 1321.7 hold at 2227.6 MD
3549.3	22.55	132.33	3419.3	-488.9	536.7	0.00	0.00	725.9	Start Drop -2.00
4676.8	0.00	0.32	4518.0	-636.4	698.6	2.00	180.00	945.0	Start 4000.0 hold at 4676.8 MD
8676.8	0.00	0.32	8518.0	-636.4	698.6	0.00	0.00	945.0	TD at 8676.8

#### WELLBORE TARGET DETAILS (MAP CO-ORDINATES AND LAT/LONG)

Name	TVD	+N-S	+E-W	Latitude	Longitude	Shape
WASTE 25-21 BHL	8518.0	-636.4	698.6	40° 2' 12.325 N	105° 0' 32.180 W	Point

#### WELL DETAILS: WASTE 25-21

+N-S	+E-W	Northing	Ground Level: Easting	5213.0 Latitude	Longitude	Slot
0.0	0.0	1257249.70	3136795.55	40° 2' 18.614 N	105° 0' 41.162 W	



Plan: WASTE 25-21 (wp01) (WASTE 25-21/WASTE 25-21)

Created By: Jason Daguitera Date: 9:18, October 05 2010

<b>Database:</b>	EDM 2003.21 Single User Db	<b>Local Co-ordinate Reference:</b>	Well WASTE 25-21
<b>Company:</b>	ANADARKO PETROLEUM CORP.	<b>TVD Reference:</b>	WELL @ 5213.0ft (Original Well Elev)
<b>Project:</b>	ANADARKO COLORADO NORTHERN ZONE NAD 83	<b>MD Reference:</b>	WELL @ 5213.0ft (Original Well Elev)
<b>Site:</b>	WELD_WASTE 6-21	<b>North Reference:</b>	True
<b>Well:</b>	WASTE 25-21	<b>Survey Calculation Method:</b>	Minimum Curvature
<b>Wellbore:</b>	WASTE 25-21		
<b>Design:</b>	WASTE 25-21 (wp01)		

<b>Project</b>	ANADARKO COLORADO NORTHERN ZONE NAD 83, ROCKIES, ROCKIES		
<b>Map System:</b>	US State Plane 1983	<b>System Datum:</b>	Mean Sea Level
<b>Geo Datum:</b>	North American Datum 1983		
<b>Map Zone:</b>	Colorado Northern Zone		

Site		WELD_WASTE 6-21			
Site Position:		Northing:	1,257,249.65 ft	Latitude:	40° 2' 18.614 N
From:	Lat/Long	Easting:	3,136,785.47 ft	Longitude:	105° 0' 41.292 W
Position Uncertainty:	0.0 ft	Slot Radius:	"	Grid Convergence:	0.32 °

Well	WASTE 25-21					
Well Position	+N/-S	0.0 ft	Northing:	1,257,249.70 ft	Latitude:	40° 2' 18.614 N
	+E/-W	10.1 ft	Easting:	3,136,795.55 ft	Longitude:	105° 0' 41.162 W
Position Uncertainty		0.0 ft	Wellhead Elevation:	ft	Ground Level:	5,213.0 ft

<b>Wellbore</b>	WASTE 25-21				
<b>Magnetics</b>	<b>Model Name</b>	<b>Sample Date</b>	<b>Declination (°)</b>	<b>Dip Angle (°)</b>	<b>Field Strength (nT)</b>
	BGGM2010	10/4/2010	9.02	66.75	52,967

<b>Design</b>	WASTE 25-21 (wp01)			
<b>Audit Notes:</b>				
<b>Version:</b>	<b>Phase:</b>	PLAN	<b>Tie On Depth:</b>	0.0
<b>Vertical Section:</b>	<b>Depth From (TVD) (ft)</b>	<b>+N/-S (ft)</b>	<b>+E/-W (ft)</b>	<b>Direction (°)</b>
	0.0	0.0	0.0	132.33

<b>Plan Sections</b>										
Measured Depth (ft)	Inclination (°)	Azimuth (°)	Vertical Depth (ft)	+N/-S (ft)	+E/-W (ft)	Dogleg Rate (°/100ft)	Build Rate (°/100ft)	Turn Rate (°/100ft)	TFO (°)	Target
0.0	0.00	0.00	0.0	0.0	0.0	0.00	0.00	0.00	0.00	
1,100.0	0.00	0.00	1,100.0	0.0	0.0	0.00	0.00	0.00	0.00	
2,227.6	22.55	132.33	2,198.7	-147.5	161.9	2.00	2.00	0.00	132.33	
3,549.3	22.55	132.33	3,419.3	-488.9	536.7	0.00	0.00	0.00	0.00	
4,676.8	0.00	0.32	4,518.0	-636.4	698.6	2.00	-2.00	0.00	180.00	
8,676.8	0.00	0.32	8,518.0	-636.4	698.6	0.00	0.00	0.00	0.00	WASTE 25-21 BHL

<b>Database:</b>	EDM 2003.21 Single User Db	<b>Local Co-ordinate Reference:</b>	Well WASTE 25-21
<b>Company:</b>	ANADARKO PETROLEUM CORP.	<b>TVD Reference:</b>	WELL @ 5213.0ft (Original Well Elev)
<b>Project:</b>	ANADARKO COLORADO NORTHERN ZONE NAD 83	<b>MD Reference:</b>	WELL @ 5213.0ft (Original Well Elev)
<b>Site:</b>	WELD_WASTE 6-21	<b>North Reference:</b>	True
<b>Well:</b>	WASTE 25-21	<b>Survey Calculation Method:</b>	Minimum Curvature
<b>Wellbore:</b>	WASTE 25-21		
<b>Design:</b>	WASTE 25-21 (wp01)		

**Planned Survey**

Measured Depth (ft)	Inclination (°)	Azimuth (°)	Vertical Depth (ft)	+N/-S (ft)	+E/-W (ft)	Vertical Section (ft)	Dogleg Rate (°/100ft)	Build Rate (°/100ft)	Turn Rate (°/100ft)
0.0	0.00	0.00	0.0	0.0	0.0	0.0	0.00	0.00	0.00
100.0	0.00	0.00	100.0	0.0	0.0	0.0	0.00	0.00	0.00
200.0	0.00	0.00	200.0	0.0	0.0	0.0	0.00	0.00	0.00
300.0	0.00	0.00	300.0	0.0	0.0	0.0	0.00	0.00	0.00
400.0	0.00	0.00	400.0	0.0	0.0	0.0	0.00	0.00	0.00
500.0	0.00	0.00	500.0	0.0	0.0	0.0	0.00	0.00	0.00
600.0	0.00	0.00	600.0	0.0	0.0	0.0	0.00	0.00	0.00
700.0	0.00	0.00	700.0	0.0	0.0	0.0	0.00	0.00	0.00
800.0	0.00	0.00	800.0	0.0	0.0	0.0	0.00	0.00	0.00
900.0	0.00	0.00	900.0	0.0	0.0	0.0	0.00	0.00	0.00
<b>9 5/8"</b>									
950.0	0.00	0.00	950.0	0.0	0.0	0.0	0.00	0.00	0.00
1,000.0	0.00	0.00	1,000.0	0.0	0.0	0.0	0.00	0.00	0.00
<b>Start Build 2.00</b>									
1,100.0	0.00	0.00	1,100.0	0.0	0.0	0.0	0.00	0.00	0.00
1,200.0	2.00	132.33	1,200.0	-1.2	1.3	1.7	2.00	2.00	0.00
1,300.0	4.00	132.33	1,299.8	-4.7	5.2	7.0	2.00	2.00	0.00
1,400.0	6.00	132.33	1,399.5	-10.6	11.6	15.7	2.00	2.00	0.00
1,500.0	8.00	132.33	1,498.7	-18.8	20.6	27.9	2.00	2.00	0.00
1,600.0	10.00	132.33	1,597.5	-29.3	32.2	43.5	2.00	2.00	0.00
1,700.0	12.00	132.33	1,695.6	-42.2	46.3	62.6	2.00	2.00	0.00
1,800.0	14.00	132.33	1,793.1	-57.3	62.9	85.1	2.00	2.00	0.00
1,900.0	16.00	132.33	1,889.6	-74.7	82.0	111.0	2.00	2.00	0.00
2,000.0	18.00	132.33	1,985.3	-94.4	103.7	140.2	2.00	2.00	0.00
2,100.0	20.00	132.33	2,079.8	-116.3	127.7	172.8	2.00	2.00	0.00
2,200.0	22.00	132.33	2,173.2	-140.5	154.2	208.6	2.00	2.00	0.00
<b>Start 1321.7 hold at 2227.6 MD</b>									
2,227.6	22.55	132.33	2,198.7	-147.5	161.9	219.1	2.00	2.00	0.00
2,300.0	22.55	132.33	2,265.6	-166.2	182.5	246.8	0.00	0.00	0.00
2,400.0	22.55	132.33	2,357.9	-192.0	210.8	285.2	0.00	0.00	0.00
2,500.0	22.55	132.33	2,450.3	-217.9	239.2	323.5	0.00	0.00	0.00
2,600.0	22.55	132.33	2,542.6	-243.7	267.5	361.9	0.00	0.00	0.00
2,700.0	22.55	132.33	2,635.0	-269.5	295.9	400.2	0.00	0.00	0.00
2,800.0	22.55	132.33	2,727.3	-295.4	324.2	438.6	0.00	0.00	0.00
2,900.0	22.55	132.33	2,819.7	-321.2	352.6	476.9	0.00	0.00	0.00
3,000.0	22.55	132.33	2,912.0	-347.0	380.9	515.3	0.00	0.00	0.00
3,100.0	22.55	132.33	3,004.4	-372.8	409.3	553.6	0.00	0.00	0.00
3,200.0	22.55	132.33	3,096.8	-398.7	437.6	592.0	0.00	0.00	0.00
3,300.0	22.55	132.33	3,189.1	-424.5	466.0	630.3	0.00	0.00	0.00
3,400.0	22.55	132.33	3,281.5	-450.3	494.3	668.7	0.00	0.00	0.00
3,500.0	22.55	132.33	3,373.8	-476.1	522.7	707.0	0.00	0.00	0.00
<b>Start Drop -2.00</b>									
3,549.3	22.55	132.33	3,419.3	-488.9	536.7	725.9	0.00	0.00	0.00
3,600.0	21.54	132.33	3,466.3	-501.7	550.7	745.0	2.00	-2.00	0.00
3,700.0	19.54	132.33	3,560.0	-525.3	576.7	780.1	2.00	-2.00	0.00
3,800.0	17.54	132.33	3,654.8	-546.7	600.2	811.9	2.00	-2.00	0.00
3,900.0	15.54	132.33	3,750.6	-565.9	621.2	840.3	2.00	-2.00	0.00
4,000.0	13.54	132.33	3,847.4	-582.8	639.8	865.4	2.00	-2.00	0.00
4,100.0	11.54	132.33	3,945.0	-597.4	655.8	887.1	2.00	-2.00	0.00
4,200.0	9.54	132.33	4,043.4	-609.7	669.3	905.4	2.00	-2.00	0.00
4,300.0	7.54	132.33	4,142.2	-619.7	680.3	920.2	2.00	-2.00	0.00
4,400.0	5.54	132.33	4,241.6	-627.4	688.7	931.6	2.00	-2.00	0.00
<b>PK</b>									

<b>Database:</b>	EDM 2003.21 Single User Db	<b>Local Co-ordinate Reference:</b>	Well WASTE 25-21
<b>Company:</b>	ANADARKO PETROLEUM CORP.	<b>TVD Reference:</b>	WELL @ 5213.0ft (Original Well Elev)
<b>Project:</b>	ANADARKO COLORADO NORTHERN ZONE NAD 83	<b>MD Reference:</b>	WELL @ 5213.0ft (Original Well Elev)
<b>Site:</b>	WELD_WASTE 6-21	<b>North Reference:</b>	True
<b>Well:</b>	WASTE 25-21	<b>Survey Calculation Method:</b>	Minimum Curvature
<b>Wellbore:</b>	WASTE 25-21		
<b>Design:</b>	WASTE 25-21 (wp01)		

**Planned Survey**

Measured Depth (ft)	Inclination (°)	Azimuth (°)	Vertical Depth (ft)	+N/-S (ft)	+E/-W (ft)	Vertical Section (ft)	Dogleg Rate (°/100ft)	Build Rate (°/100ft)	Turn Rate (°/100ft)
4,421.5	5.11	132.33	4,263.0	-628.7	690.2	933.6	2.00	-2.00	0.00
4,500.0	3.54	132.33	4,341.3	-632.7	694.6	939.5	2.00	-2.00	0.00
4,600.0	1.54	132.33	4,441.2	-635.7	697.8	944.0	2.00	-2.00	0.00
<b>Start 4000.0 hold at 4676.8 MD</b>									
4,676.8	0.00	0.32	4,518.0	-636.4	698.6	945.0	2.00	-2.00	0.00
4,700.0	0.00	0.32	4,541.2	-636.4	698.6	945.0	0.00	0.00	0.00
4,800.0	0.00	0.32	4,641.2	-636.4	698.6	945.0	0.00	0.00	0.00
4,900.0	0.00	0.32	4,741.2	-636.4	698.6	945.0	0.00	0.00	0.00
<b>SX</b>									
4,921.8	0.00	0.32	4,763.0	-636.4	698.6	945.0	0.00	0.00	0.00
5,000.0	0.00	0.32	4,841.2	-636.4	698.6	945.0	0.00	0.00	0.00
5,100.0	0.00	0.32	4,941.2	-636.4	698.6	945.0	0.00	0.00	0.00
5,200.0	0.00	0.32	5,041.2	-636.4	698.6	945.0	0.00	0.00	0.00
5,300.0	0.00	0.32	5,141.2	-636.4	698.6	945.0	0.00	0.00	0.00
5,400.0	0.00	0.32	5,241.2	-636.4	698.6	945.0	0.00	0.00	0.00
5,500.0	0.00	0.32	5,341.2	-636.4	698.6	945.0	0.00	0.00	0.00
5,600.0	0.00	0.32	5,441.2	-636.4	698.6	945.0	0.00	0.00	0.00
5,700.0	0.00	0.32	5,541.2	-636.4	698.6	945.0	0.00	0.00	0.00
5,800.0	0.00	0.32	5,641.2	-636.4	698.6	945.0	0.00	0.00	0.00
5,900.0	0.00	0.32	5,741.2	-636.4	698.6	945.0	0.00	0.00	0.00
6,000.0	0.00	0.32	5,841.2	-636.4	698.6	945.0	0.00	0.00	0.00
6,100.0	0.00	0.32	5,941.2	-636.4	698.6	945.0	0.00	0.00	0.00
6,200.0	0.00	0.32	6,041.2	-636.4	698.6	945.0	0.00	0.00	0.00
6,300.0	0.00	0.32	6,141.2	-636.4	698.6	945.0	0.00	0.00	0.00
6,400.0	0.00	0.32	6,241.2	-636.4	698.6	945.0	0.00	0.00	0.00
6,500.0	0.00	0.32	6,341.2	-636.4	698.6	945.0	0.00	0.00	0.00
6,600.0	0.00	0.32	6,441.2	-636.4	698.6	945.0	0.00	0.00	0.00
6,700.0	0.00	0.32	6,541.2	-636.4	698.6	945.0	0.00	0.00	0.00
6,800.0	0.00	0.32	6,641.2	-636.4	698.6	945.0	0.00	0.00	0.00
6,900.0	0.00	0.32	6,741.2	-636.4	698.6	945.0	0.00	0.00	0.00
7,000.0	0.00	0.32	6,841.2	-636.4	698.6	945.0	0.00	0.00	0.00
7,100.0	0.00	0.32	6,941.2	-636.4	698.6	945.0	0.00	0.00	0.00
7,200.0	0.00	0.32	7,041.2	-636.4	698.6	945.0	0.00	0.00	0.00
7,300.0	0.00	0.32	7,141.2	-636.4	698.6	945.0	0.00	0.00	0.00
7,400.0	0.00	0.32	7,241.2	-636.4	698.6	945.0	0.00	0.00	0.00
7,500.0	0.00	0.32	7,341.2	-636.4	698.6	945.0	0.00	0.00	0.00
7,600.0	0.00	0.32	7,441.2	-636.4	698.6	945.0	0.00	0.00	0.00
7,700.0	0.00	0.32	7,541.2	-636.4	698.6	945.0	0.00	0.00	0.00
<b>NIO</b>									
7,703.8	0.00	0.32	7,545.0	-636.4	698.6	945.0	0.00	0.00	0.00
7,800.0	0.00	0.32	7,641.2	-636.4	698.6	945.0	0.00	0.00	0.00
7,900.0	0.00	0.32	7,741.2	-636.4	698.6	945.0	0.00	0.00	0.00
8,000.0	0.00	0.32	7,841.2	-636.4	698.6	945.0	0.00	0.00	0.00
8,100.0	0.00	0.32	7,941.2	-636.4	698.6	945.0	0.00	0.00	0.00
<b>CD</b>									
8,111.8	0.00	0.32	7,953.0	-636.4	698.6	945.0	0.00	0.00	0.00
<b>GH</b>									
8,188.8	0.00	0.32	8,030.0	-636.4	698.6	945.0	0.00	0.00	0.00
8,200.0	0.00	0.32	8,041.2	-636.4	698.6	945.0	0.00	0.00	0.00
8,300.0	0.00	0.32	8,141.2	-636.4	698.6	945.0	0.00	0.00	0.00
8,400.0	0.00	0.32	8,241.2	-636.4	698.6	945.0	0.00	0.00	0.00
8,500.0	0.00	0.32	8,341.2	-636.4	698.6	945.0	0.00	0.00	0.00

<b>Database:</b>	EDM 2003.21 Single User Db	<b>Local Co-ordinate Reference:</b>	Well WASTE 25-21
<b>Company:</b>	ANADARKO PETROLEUM CORP.	<b>TVD Reference:</b>	WELL @ 5213.0ft (Original Well Elev)
<b>Project:</b>	ANADARKO COLORADO NORTHERN ZONE NAD 83	<b>MD Reference:</b>	WELL @ 5213.0ft (Original Well Elev)
<b>Site:</b>	WELD_WASTE 6-21	<b>North Reference:</b>	True
<b>Well:</b>	WASTE 25-21	<b>Survey Calculation Method:</b>	Minimum Curvature
<b>Wellbore:</b>	WASTE 25-21		
<b>Design:</b>	WASTE 25-21 (wp01)		

#### Planned Survey

Measured Depth (ft)	Inclination (°)	Azimuth (°)	Vertical Depth (ft)	+N/-S (ft)	+E/-W (ft)	Vertical Section (ft)	Dogleg Rate (°/100ft)	Build Rate (°/100ft)	Turn Rate (°/100ft)
J									
8,541.8	0.00	0.32	8,383.0	-636.4	698.6	945.0	0.00	0.00	0.00
8,600.0	0.00	0.32	8,441.2	-636.4	698.6	945.0	0.00	0.00	0.00
<b>TD at 8676.8</b>									
8,676.8	0.00	0.32	8,518.0	-636.4	698.6	945.0	0.00	0.00	0.00

#### Design Targets

Target Name	Dip Angle (°)	Dip Dir. (°)	TVD (ft)	+N/-S (ft)	+E/-W (ft)	Northing (ft)	Easting (ft)	Latitude	Longitude
- hit/miss target									
- Shape									
WASTE 25-21 BHL	0.00	0.32	8,518.0	-636.4	698.6	1,256,617.19	3,137,497.65	40° 2' 12.325 N	105° 0' 32.180 W
- plan hits target center									
- Point									

#### Casing Points

Measured Depth (ft)	Vertical Depth (ft)	Name	Casing Diameter (")	Hole Diameter (")
950.0	950.0	9 5/8"	9-5/8	12-1/4

#### Formations

Measured Depth (ft)	Vertical Depth (ft)	Name	Lithology	Dip (°)	Dip Direction (°)
4,421.5	4,263.0	PK		0.00	
8,188.8	8,030.0	GH		0.00	
4,921.8	4,763.0	SX		0.00	
7,703.8	7,545.0	NIO		0.00	
8,541.8	8,383.0	J		0.00	
8,111.8	7,953.0	CD		0.00	

#### Plan Annotations

Measured Depth (ft)	Vertical Depth (ft)	Local Coordinates		Comment
		+N/-S (ft)	+E/-W (ft)	
1,100.0	1,100.0	0.0	0.0	Start Build 2.00
2,227.6	2,198.7	-147.5	161.9	Start 1321.7 hold at 2227.6 MD
3,549.3	3,419.3	-488.9	536.7	Start Drop -2.00
4,676.8	4,518.0	-636.4	698.6	Start 4000.0 hold at 4676.8 MD
8,676.8	8,518.0	-636.4	698.6	TD at 8676.8



# **ANADARKO PETROLEUM CORP.**

**ANADARKO COLORADO NORTHERN ZONE NAD 83  
WELD\_WASTE 6-21  
WASTE 25-21**

**WASTE 25-21  
WASTE 25-21 (wp01)**

## **Anticollision Summary Report**

**05 October, 2010**



<b>Company:</b>	ANADARKO PETROLEUM CORP.	<b>Local Co-ordinate Reference:</b>	Well WASTE 25-21
<b>Project:</b>	ANADARKO COLORADO NORTHERN ZONE NAD 83	<b>TVD Reference:</b>	WELL @ 5213.0ft (Original Well Elev)
<b>Reference Site:</b>	WELD_WASTE 6-21	<b>MD Reference:</b>	WELL @ 5213.0ft (Original Well Elev)
<b>Site Error:</b>	0.0ft	<b>North Reference:</b>	True
<b>Reference Well:</b>	WASTE 25-21	<b>Survey Calculation Method:</b>	Minimum Curvature
<b>Well Error:</b>	0.0ft	<b>Output errors are at</b>	2.00 sigma
<b>Reference Wellbore</b>	WASTE 25-21	<b>Database:</b>	EDM 2003.21 Single User Db
<b>Reference Design:</b>	WASTE 25-21 (wp01)	<b>Offset TVD Reference:</b>	Offset Datum

<b>Reference</b>	WASTE 25-21 (wp01)		
<b>Filter type:</b>	NO GLOBAL FILTER: Using user defined selection & filtering criteria		
<b>Interpolation Method:</b>	MD Interval 100.0ft	<b>Error Model:</b>	ISCWSA
<b>Depth Range:</b>	Unlimited	<b>Scan Method:</b>	Closest Approach 3D
<b>Results Limited by:</b>	Maximum center-center distance of 1,300.8ft	<b>Error Surface:</b>	Elliptical Conic
<b>Warning Levels Evaluated at:</b>	2.00 Sigma		

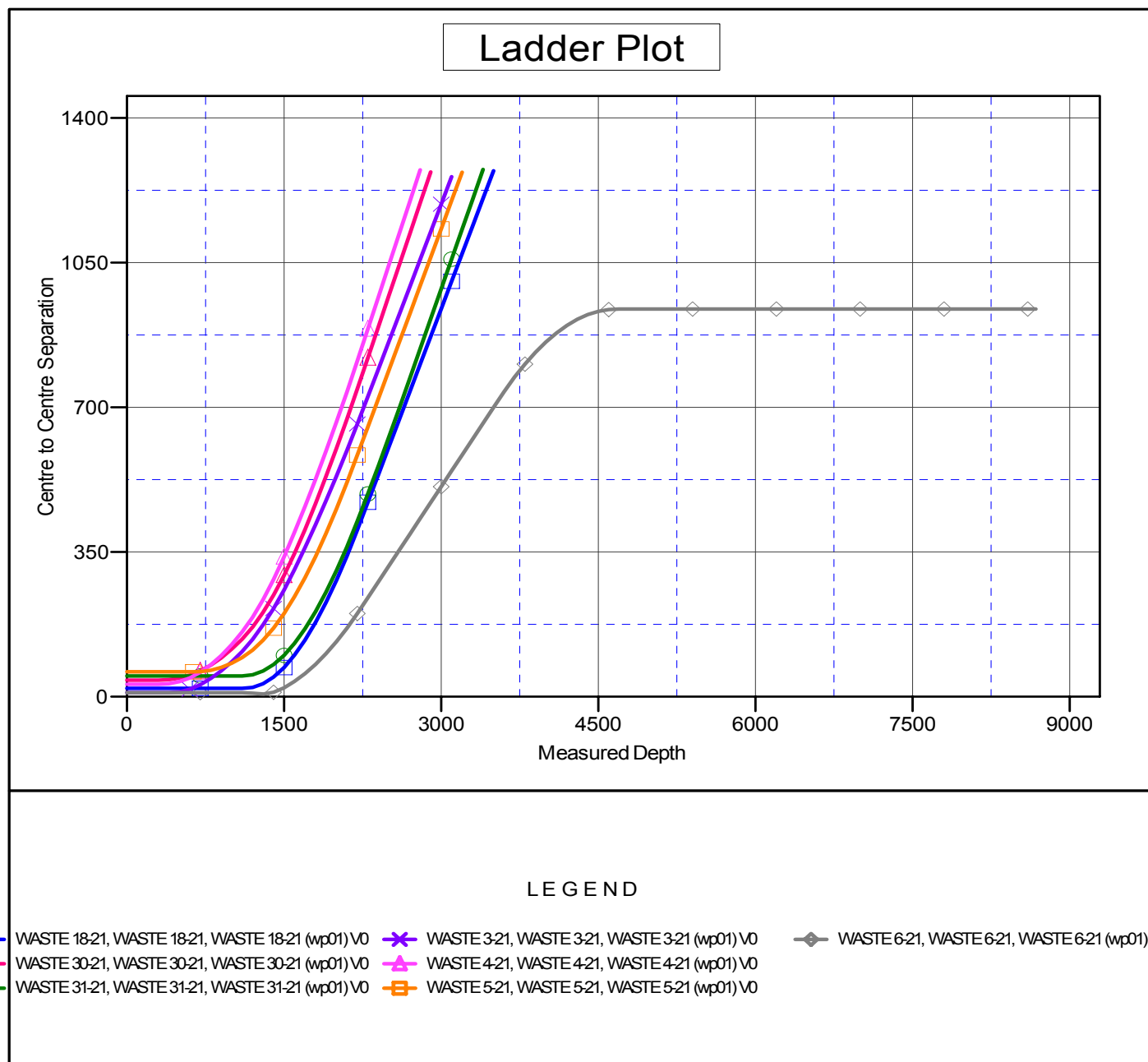
<b>Survey Tool Program</b>	<b>Date</b>	10/5/2010			
<b>From (ft)</b>	<b>To (ft)</b>	<b>Survey (Wellbore)</b>	<b>Tool Name</b>	<b>Description</b>	
0.0	8,676.8	WASTE 25-21 (wp01) (WASTE 25-21)	MWD	MWD - Standard	

Summary						
Site Name	Reference Measured Depth (ft)	Offset Measured Depth (ft)	Distance Between Centres (ft)	Distance Between Ellipses (ft)	Separation Factor	Warning
Offset Well - Wellbore - Design						
WELD_WASTE 6-21						
WASTE 5-21 EXISTING - WASTE 5-21 EXISTING - WA						Out of range
WASTE 30-21 - WASTE 30-21 - WASTE 30-21 (wp01)	300.0	300.0	40.0	38.9	35.628 CC, ES	
WASTE 4-21 - WASTE 4-21 - WASTE 4-21 (wp01)	300.0	300.0	30.0	28.8	26.658 CC, ES	
WASTE 3-21 - WASTE 3-21 - WASTE 3-21 (wp01)	348.7	348.7	10.1	8.7	7.492 CC	
WASTE 3-21 - WASTE 3-21 - WASTE 3-21 (wp01)	400.0	400.0	10.1	8.5	6.428 ES	
WASTE 3-21 - WASTE 3-21 - WASTE 3-21 (wp01)	500.0	499.7	11.9	9.9	5.847 SF	
WASTE 4-21 - WASTE 4-21 - WASTE 4-21 (wp01)	500.0	497.7	36.4	34.4	17.945 SF	
WASTE 30-21 - WASTE 30-21 - WASTE 30-21 (wp01)	600.0	596.1	52.0	49.5	20.953 SF	
WASTE 5-21 - WASTE 5-21 - WASTE 5-21 (wp01)	633.3	633.3	60.2	57.6	22.957 CC, ES	
WASTE 5-21 - WASTE 5-21 - WASTE 5-21 (wp01)	900.0	894.3	70.9	67.1	18.785 SF	
WASTE 18-21 - WASTE 18-21 - WASTE 18-21 (wp01)	1,100.0	1,100.0	20.2	15.4	4.271 CC, ES, SF	
WASTE 31-21 - WASTE 31-21 - WASTE 31-21 (wp01)	1,100.0	1,100.0	50.1	45.4	10.618 CC, ES	
WASTE 31-21 - WASTE 31-21 - WASTE 31-21 (wp01)	1,200.0	1,198.3	53.1	47.9	10.337 SF	
WASTE 6-21 - WASTE 6-21 - WASTE 6-21 (wp01)	1,303.8	1,303.6	6.6	1.0	1.184 Level 2 , CC, ES, SF	



<b>Company:</b>	ANADARKO PETROLEUM CORP.	<b>Local Co-ordinate Reference:</b>	Well WASTE 25-21
<b>Project:</b>	ANADARKO COLORADO NORTHERN ZONE NAD 83	<b>TVD Reference:</b>	WELL @ 5213.0ft (Original Well Elev)
<b>Reference Site:</b>	WELD_WASTE 6-21	<b>MD Reference:</b>	WELL @ 5213.0ft (Original Well Elev)
<b>Site Error:</b>	0.0ft	<b>North Reference:</b>	True
<b>Reference Well:</b>	WASTE 25-21	<b>Survey Calculation Method:</b>	Minimum Curvature
<b>Well Error:</b>	0.0ft	<b>Output errors are at</b>	2.00 sigma
<b>Reference Wellbore</b>	WASTE 25-21	<b>Database:</b>	EDM 2003.21 Single User Db
<b>Reference Design:</b>	WASTE 25-21 (wp01)	<b>Offset TVD Reference:</b>	Offset Datum

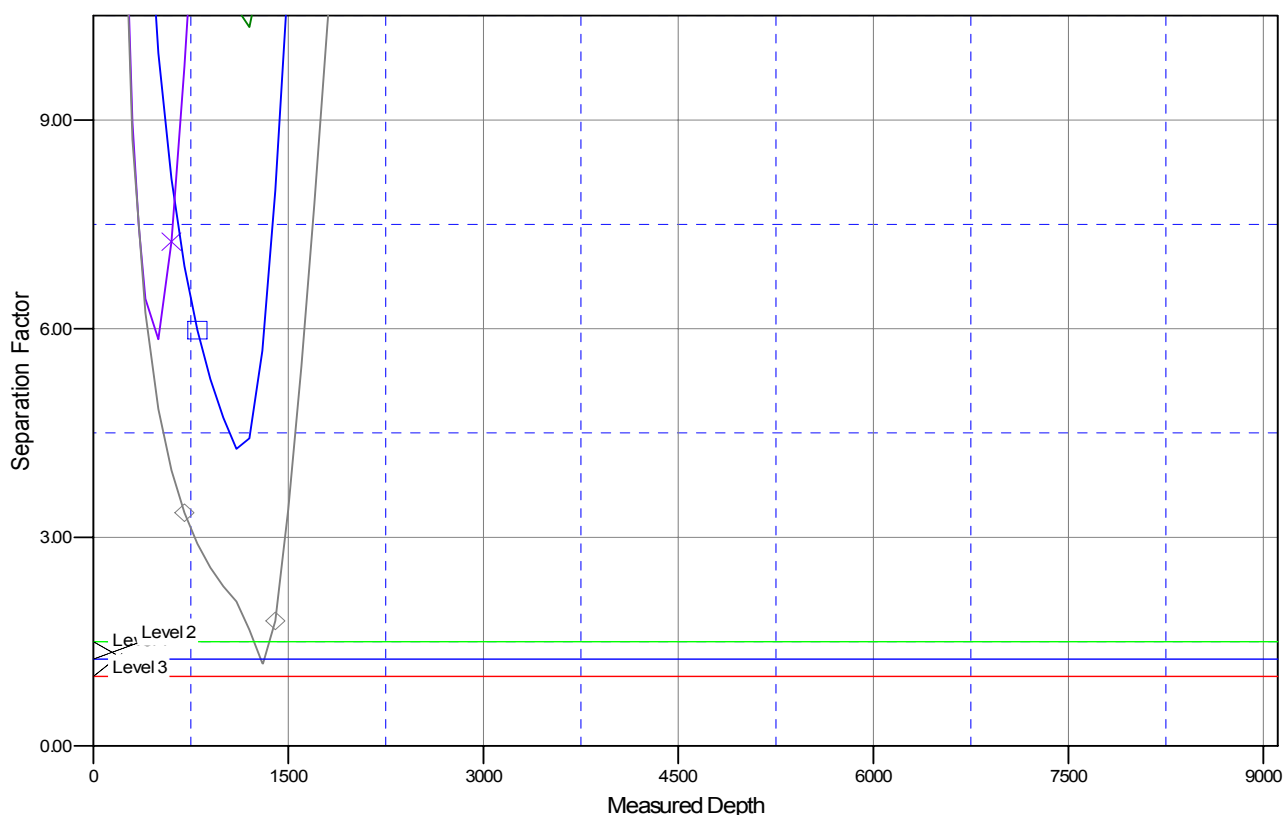
Reference Depths are relative to WELL @ 5213.0ft (Original Well Elev) Coordinates are relative to: WASTE 25-21  
Offset Depths are relative to Offset Datum  
Central Meridian is 105° 30' 0.000 W °  
Coordinate System is US State Plane 1983, Colorado Northern Zone  
Grid Convergence at Surface is: 0.32°



<b>Company:</b>	ANADARKO PETROLEUM CORP.	<b>Local Co-ordinate Reference:</b>	Well WASTE 25-21
<b>Project:</b>	ANADARKO COLORADO NORTHERN ZONE NAD 83	<b>TVD Reference:</b>	WELL @ 5213.0ft (Original Well Elev)
<b>Reference Site:</b>	WELD_WASTE 6-21	<b>MD Reference:</b>	WELL @ 5213.0ft (Original Well Elev)
<b>Site Error:</b>	0.0ft	<b>North Reference:</b>	True
<b>Reference Well:</b>	WASTE 25-21	<b>Survey Calculation Method:</b>	Minimum Curvature
<b>Well Error:</b>	0.0ft	<b>Output errors are at</b>	2.00 sigma
<b>Reference Wellbore</b>	WASTE 25-21	<b>Database:</b>	EDM 2003.21 Single User Db
<b>Reference Design:</b>	WASTE 25-21 (wp01)	<b>Offset TVD Reference:</b>	Offset Datum

Reference Depths are relative to WELL @ 5213.0ft (Original Well Elev) Coordinates are relative to: WASTE 25-21  
Offset Depths are relative to Offset Datum Coordinate System is US State Plane 1983, Colorado Northern Zone  
Central Meridian is 105° 30' 0.000 W ° Grid Convergence at Surface is: 0.32°

## Separation Factor Plot



### LEGEND

- WASTE 18-21, WASTE 18-21, WASTE 18-21 (wp01) V0
- WASTE 30-21, WASTE 30-21, WASTE 30-21 (wp01) V0
- WASTE 31-21, WASTE 31-21, WASTE 31-21 (wp01) V0
- WASTE 3-21, WASTE 3-21, WASTE 3-21 (wp01) V0
- WASTE 4-21, WASTE 4-21, WASTE 4-21 (wp01) V0
- WASTE 5-21, WASTE 5-21, WASTE 5-21 (wp01) V0
- WASTE 6-21, WASTE 6-21, WASTE 6-21 (wp01) V0