



ANADARKO PETROLEUM CORP.

ANADARKO COLORADO NORTHERN ZONE NAD 83

WELD_WASTE 6-21

WASTE 5-21

WASTE 5-21

Plan: WASTE 5-21 (wp01)

Standard Planning Report

05 October, 2010

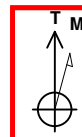




Project: ANADARKO COLORADO NORTHERN ZONE NAD 83
 Site: WELD_WASTE 6-21
 Well: WASTE 5-21
 Wellbore: WASTE 5-21
 Section:
 SHL:
 Design: WASTE 5-21 (wp01)
 Latitude: 40° 2' 18.611 N
 Longitude: 105° 0' 41.936 W
 GL: 5213.0
 KB: WELL @ 5213.0ft (Original Well Elev)



Weatherford®



Azimuths to True North
 Magnetic North: 9.02°
 Magnetic Field
 Strength: 52966.6snT
 Dip Angle: 66.75°
 Date: 10/4/2010
 Model: BGGM2010

FORMATION TOP DETAILS

TVDPath	MDPath	Formation
4262.0	4481.0	PX
4762.0	4981.3	SX
7544.0	7763.3	NIO
7952.0	8171.3	CD
8029.0	8248.3	GH
8382.0	8601.3	J

CASING DETAILS

TVD	MD	Name	Size
950.0	950.6	9 5/8"	9-5/8

SECTION DETAILS

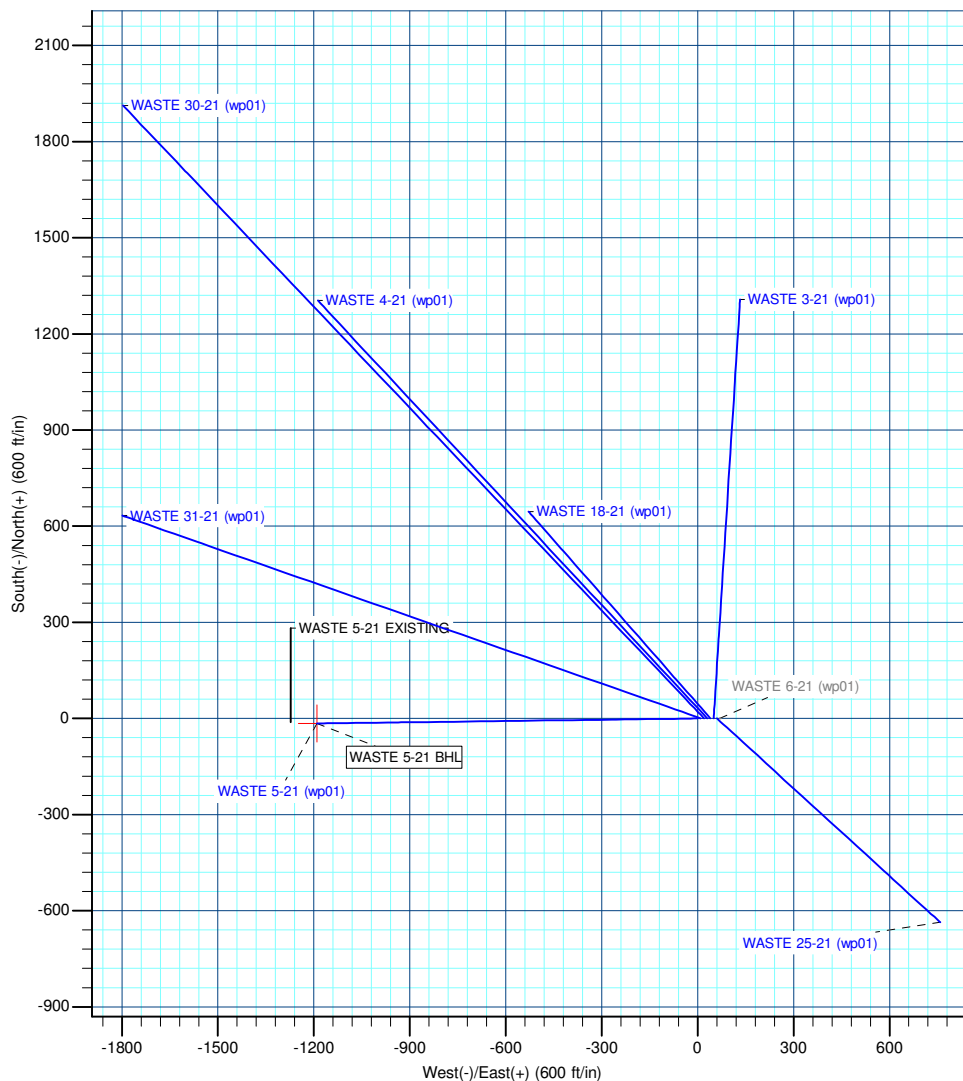
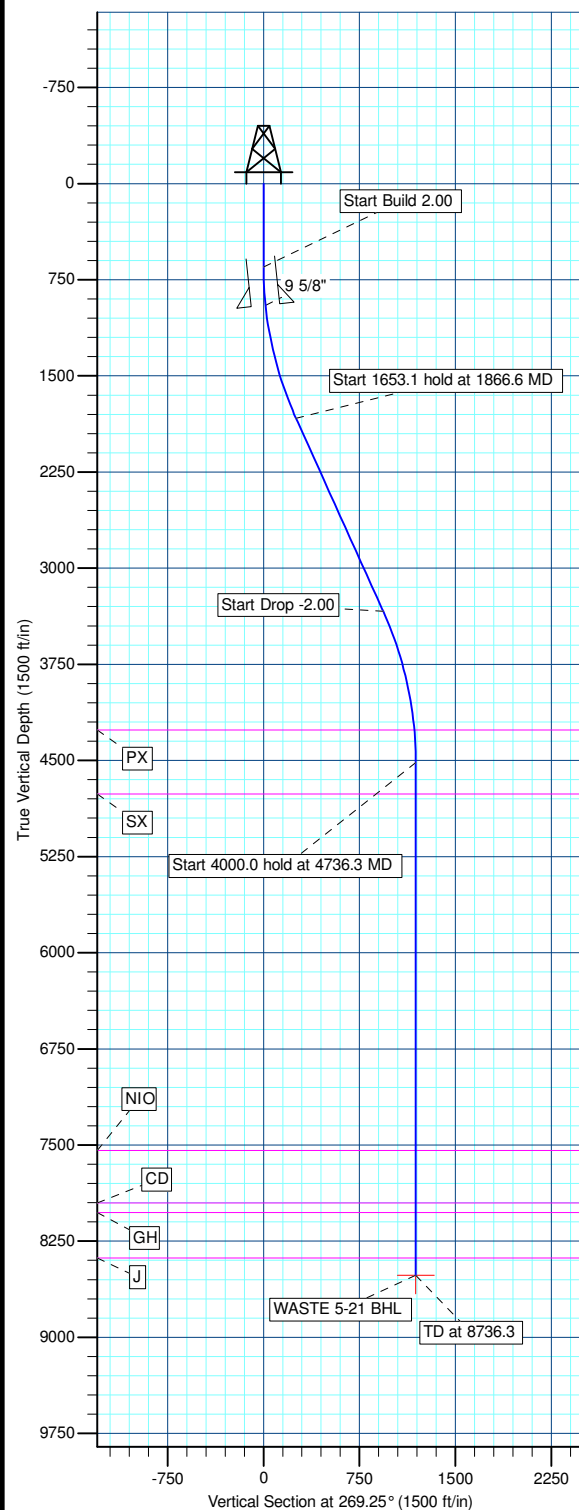
MD	Inc	Azi	TVD	+N-S	+E-W	DLeg	TFace	VSec	Annotation
0.0	0.00	0.00	0.0	0.0	0.0	0.00	0.00	0.0	
650.0	0.00	0.00	650.0	0.0	0.0	0.00	0.00	0.0	Start Build 2.00
1866.6	24.33	269.25	1830.4	-3.3	-254.5	2.00	269.25	254.5	Start 1653.1 hold at 1866.6 MD
3519.7	24.33	269.25	3336.6	-12.3	-935.5	0.00	0.00	935.6	Start Drop -2.00
4736.3	0.00	0.32	4517.0	-15.6	-1190.0	2.00	180.00	1190.1	Start 4000.0 hold at 4736.3 MD
8736.3	0.00	0.32	8517.0	-15.6	-1190.0	0.00	0.00	1190.1	TD at 8736.3

WELLBORE TARGET DETAILS (MAP CO-ORDINATES AND LAT/LONG)

Name	TVD	+N-S	+E-W	Latitude	Longitude	Shape
WASTE 5-21 BHL	8517.0	-15.6	-1190.0	40° 2' 18.456 N	105° 0' 57.236 W	Point

WELL DETAILS: WASTE 5-21

+N-S	+E-W	Northing	Ground Level:	5213.0	Latitude	Longitude	Slot
0.0	0.0	1257249.00	Easting	3136735.35	40° 2' 18.611 N	105° 0' 41.936 W	



Plan: WASTE 5-21 (wp01) (WASTE 5-21/WASTE 5-21)

Created By: Jason Daguitera Date: 9:46, October 05 2010

Database:	EDM 2003.21 Single User Db	Local Co-ordinate Reference:	Well WASTE 5-21
Company:	ANADARKO PETROLEUM CORP.	TVD Reference:	WELL @ 5213.0ft (Original Well Elev)
Project:	ANADARKO COLORADO NORTHERN ZONE NAD 83	MD Reference:	WELL @ 5213.0ft (Original Well Elev)
Site:	WELD_WASTE 6-21	North Reference:	True
Well:	WASTE 5-21	Survey Calculation Method:	Minimum Curvature
Wellbore:	WASTE 5-21		
Design:	WASTE 5-21 (wp01)		

Project	ANADARKO COLORADO NORTHERN ZONE NAD 83, ROCKIES, ROCKIES		
Map System:	US State Plane 1983	System Datum:	Mean Sea Level
Geo Datum:	North American Datum 1983		
Map Zone:	Colorado Northern Zone		

Site	WELD_WASTE 6-21		
Site Position:		Northing:	1,257,249.65 ft
From:	Lat/Long	Easting:	3,136,785.47 ft
Position Uncertainty:	0.0 ft	Slot Radius:	"
		Latitude:	40° 2' 18.614 N
		Longitude:	105° 0' 41.292 W
		Grid Convergence:	0.32 °

Well	WASTE 5-21		
Well Position	+N/-S	-0.4 ft	Northing:
	+E/-W	-50.1 ft	Easting:
Position Uncertainty		0.0 ft	Wellhead Elevation:
			Latitude:
			Longitude:
			Ground Level:

Wellbore	WASTE 5-21				
Magnetics	Model Name	Sample Date	Declination (°)	Dip Angle (°)	Field Strength (nT)
	BGGM2010	10/4/2010	9.02	66.75	52,967

Design	WASTE 5-21 (wp01)			
Audit Notes:				
Version:	Phase:	PLAN	Tie On Depth:	0.0
Vertical Section:	Depth From (TVD) (ft)	+N/-S (ft)	+E/-W (ft)	Direction (°)
	0.0	0.0	0.0	269.25

Plan Sections										
Measured Depth (ft)	Inclination (°)	Azimuth (°)	Vertical Depth (ft)	+N/-S (ft)	+E/-W (ft)	Dogleg Rate (°/100ft)	Build Rate (°/100ft)	Turn Rate (°/100ft)	TFO (°)	Target
0.0	0.00	0.00	0.0	0.0	0.0	0.00	0.00	0.00	0.00	
650.0	0.00	0.00	650.0	0.0	0.0	0.00	0.00	0.00	0.00	
1,866.6	24.33	269.25	1,830.4	-3.3	-254.5	2.00	2.00	0.00	269.25	
3,519.7	24.33	269.25	3,336.6	-12.3	-935.5	0.00	0.00	0.00	0.00	
4,736.3	0.00	0.32	4,517.0	-15.6	-1,190.0	2.00	-2.00	0.00	180.00	
8,736.3	0.00	0.32	8,517.0	-15.6	-1,190.0	0.00	0.00	0.00	0.00	WASTE 5-21 BHL

Database:	EDM 2003.21 Single User Db	Local Co-ordinate Reference:	Well WASTE 5-21
Company:	ANADARKO PETROLEUM CORP.	TVD Reference:	WELL @ 5213.0ft (Original Well Elev)
Project:	ANADARKO COLORADO NORTHERN ZONE NAD 83	MD Reference:	WELL @ 5213.0ft (Original Well Elev)
Site:	WELD_WASTE 6-21	North Reference:	True
Well:	WASTE 5-21	Survey Calculation Method:	Minimum Curvature
Wellbore:	WASTE 5-21		
Design:	WASTE 5-21 (wp01)		

Planned Survey

Measured Depth (ft)	Inclination (°)	Azimuth (°)	Vertical Depth (ft)	+N/-S (ft)	+E/-W (ft)	Vertical Section (ft)	Dogleg Rate (°/100ft)	Build Rate (°/100ft)	Turn Rate (°/100ft)
0.0	0.00	0.00	0.0	0.0	0.0	0.0	0.00	0.00	0.00
100.0	0.00	0.00	100.0	0.0	0.0	0.0	0.00	0.00	0.00
200.0	0.00	0.00	200.0	0.0	0.0	0.0	0.00	0.00	0.00
300.0	0.00	0.00	300.0	0.0	0.0	0.0	0.00	0.00	0.00
400.0	0.00	0.00	400.0	0.0	0.0	0.0	0.00	0.00	0.00
500.0	0.00	0.00	500.0	0.0	0.0	0.0	0.00	0.00	0.00
600.0	0.00	0.00	600.0	0.0	0.0	0.0	0.00	0.00	0.00
Start Build 2.00									
650.0	0.00	0.00	650.0	0.0	0.0	0.0	0.00	0.00	0.00
700.0	1.00	269.25	700.0	0.0	-0.4	0.4	2.00	2.00	0.00
800.0	3.00	269.25	799.9	-0.1	-3.9	3.9	2.00	2.00	0.00
900.0	5.00	269.25	899.7	-0.1	-10.9	10.9	2.00	2.00	0.00
9 5/8"									
950.6	6.01	269.25	950.0	-0.2	-15.7	15.8	2.00	2.00	0.00
1,000.0	7.00	269.25	999.1	-0.3	-21.4	21.4	2.00	2.00	0.00
1,100.0	9.00	269.25	1,098.2	-0.5	-35.3	35.3	2.00	2.00	0.00
1,200.0	11.00	269.25	1,196.6	-0.7	-52.6	52.6	2.00	2.00	0.00
1,300.0	13.00	269.25	1,294.4	-1.0	-73.4	73.4	2.00	2.00	0.00
1,400.0	15.00	269.25	1,391.5	-1.3	-97.6	97.6	2.00	2.00	0.00
1,500.0	17.00	269.25	1,487.6	-1.6	-125.2	125.2	2.00	2.00	0.00
1,600.0	19.00	269.25	1,582.7	-2.0	-156.1	156.1	2.00	2.00	0.00
1,700.0	21.00	269.25	1,676.6	-2.5	-190.3	190.3	2.00	2.00	0.00
1,800.0	23.00	269.25	1,769.4	-3.0	-227.7	227.7	2.00	2.00	0.00
Start 1653.1 hold at 1866.6 MD									
1,866.6	24.33	269.25	1,830.4	-3.3	-254.5	254.5	2.00	2.00	0.00
1,900.0	24.33	269.25	1,860.8	-3.5	-268.2	268.2	0.00	0.00	0.00
2,000.0	24.33	269.25	1,951.9	-4.1	-309.4	309.4	0.00	0.00	0.00
2,100.0	24.33	269.25	2,043.0	-4.6	-350.6	350.6	0.00	0.00	0.00
2,200.0	24.33	269.25	2,134.1	-5.1	-391.8	391.8	0.00	0.00	0.00
2,300.0	24.33	269.25	2,225.3	-5.7	-433.0	433.0	0.00	0.00	0.00
2,400.0	24.33	269.25	2,316.4	-6.2	-474.2	474.2	0.00	0.00	0.00
2,500.0	24.33	269.25	2,407.5	-6.8	-515.4	515.5	0.00	0.00	0.00
2,600.0	24.33	269.25	2,498.6	-7.3	-556.6	556.7	0.00	0.00	0.00
2,700.0	24.33	269.25	2,589.7	-7.9	-597.8	597.9	0.00	0.00	0.00
2,800.0	24.33	269.25	2,680.8	-8.4	-639.0	639.1	0.00	0.00	0.00
2,900.0	24.33	269.25	2,772.0	-8.9	-680.2	680.3	0.00	0.00	0.00
3,000.0	24.33	269.25	2,863.1	-9.5	-721.4	721.5	0.00	0.00	0.00
3,100.0	24.33	269.25	2,954.2	-10.0	-762.6	762.7	0.00	0.00	0.00
3,200.0	24.33	269.25	3,045.3	-10.6	-803.8	803.9	0.00	0.00	0.00
3,300.0	24.33	269.25	3,136.4	-11.1	-845.0	845.1	0.00	0.00	0.00
3,400.0	24.33	269.25	3,227.5	-11.6	-886.2	886.3	0.00	0.00	0.00
3,500.0	24.33	269.25	3,318.7	-12.2	-927.4	927.5	0.00	0.00	0.00
Start Drop -2.00									
3,519.7	24.33	269.25	3,336.6	-12.3	-935.5	935.6	0.00	0.00	0.00
3,600.0	22.73	269.25	3,410.2	-12.7	-967.6	967.7	2.00	-2.00	0.00
3,700.0	20.73	269.25	3,503.1	-13.2	-1,004.6	1,004.7	2.00	-2.00	0.00
3,800.0	18.73	269.25	3,597.3	-13.6	-1,038.3	1,038.4	2.00	-2.00	0.00
3,900.0	16.73	269.25	3,692.5	-14.0	-1,068.8	1,068.9	2.00	-2.00	0.00
4,000.0	14.73	269.25	3,788.7	-14.4	-1,095.9	1,096.0	2.00	-2.00	0.00
4,100.0	12.73	269.25	3,885.9	-14.7	-1,119.6	1,119.7	2.00	-2.00	0.00
4,200.0	10.73	269.25	3,983.8	-15.0	-1,139.9	1,140.0	2.00	-2.00	0.00
4,300.0	8.73	269.25	4,082.4	-15.2	-1,156.8	1,156.9	2.00	-2.00	0.00
4,400.0	6.73	269.25	4,181.4	-15.4	-1,170.3	1,170.4	2.00	-2.00	0.00

Database:	EDM 2003.21 Single User Db	Local Co-ordinate Reference:	Well WASTE 5-21
Company:	ANADARKO PETROLEUM CORP.	TVD Reference:	WELL @ 5213.0ft (Original Well Elev)
Project:	ANADARKO COLORADO NORTHERN ZONE NAD 83	MD Reference:	WELL @ 5213.0ft (Original Well Elev)
Site:	WELD_WASTE 6-21	North Reference:	True
Well:	WASTE 5-21	Survey Calculation Method:	Minimum Curvature
Wellbore:	WASTE 5-21		
Design:	WASTE 5-21 (wp01)		

Planned Survey

Measured Depth (ft)	Inclination (°)	Azimuth (°)	Vertical Depth (ft)	+N/-S (ft)	+E/-W (ft)	Vertical Section (ft)	Dogleg Rate (°/100ft)	Build Rate (°/100ft)	Turn Rate (°/100ft)
PX									
4,481.0	5.11	269.25	4,262.0	-15.5	-1,178.6	1,178.7	2.00	-2.00	0.00
4,500.0	4.73	269.25	4,280.9	-15.5	-1,180.2	1,180.3	2.00	-2.00	0.00
4,600.0	2.73	269.25	4,380.7	-15.6	-1,186.7	1,186.8	2.00	-2.00	0.00
4,700.0	0.73	269.25	4,480.7	-15.6	-1,189.8	1,189.9	2.00	-2.00	0.00
Start 4000.0 hold at 4736.3 MD									
4,736.3	0.00	0.32	4,517.0	-15.6	-1,190.0	1,190.1	2.00	-2.00	0.00
4,800.0	0.00	0.32	4,580.7	-15.6	-1,190.0	1,190.1	0.00	0.00	0.00
4,900.0	0.00	0.32	4,680.7	-15.6	-1,190.0	1,190.1	0.00	0.00	0.00
SX									
4,981.3	0.00	0.32	4,762.0	-15.6	-1,190.0	1,190.1	0.00	0.00	0.00
5,000.0	0.00	0.32	4,780.7	-15.6	-1,190.0	1,190.1	0.00	0.00	0.00
5,100.0	0.00	0.32	4,880.7	-15.6	-1,190.0	1,190.1	0.00	0.00	0.00
5,200.0	0.00	0.32	4,980.7	-15.6	-1,190.0	1,190.1	0.00	0.00	0.00
5,300.0	0.00	0.32	5,080.7	-15.6	-1,190.0	1,190.1	0.00	0.00	0.00
5,400.0	0.00	0.32	5,180.7	-15.6	-1,190.0	1,190.1	0.00	0.00	0.00
5,500.0	0.00	0.32	5,280.7	-15.6	-1,190.0	1,190.1	0.00	0.00	0.00
5,600.0	0.00	0.32	5,380.7	-15.6	-1,190.0	1,190.1	0.00	0.00	0.00
5,700.0	0.00	0.32	5,480.7	-15.6	-1,190.0	1,190.1	0.00	0.00	0.00
5,800.0	0.00	0.32	5,580.7	-15.6	-1,190.0	1,190.1	0.00	0.00	0.00
5,900.0	0.00	0.32	5,680.7	-15.6	-1,190.0	1,190.1	0.00	0.00	0.00
6,000.0	0.00	0.32	5,780.7	-15.6	-1,190.0	1,190.1	0.00	0.00	0.00
6,100.0	0.00	0.32	5,880.7	-15.6	-1,190.0	1,190.1	0.00	0.00	0.00
6,200.0	0.00	0.32	5,980.7	-15.6	-1,190.0	1,190.1	0.00	0.00	0.00
6,300.0	0.00	0.32	6,080.7	-15.6	-1,190.0	1,190.1	0.00	0.00	0.00
6,400.0	0.00	0.32	6,180.7	-15.6	-1,190.0	1,190.1	0.00	0.00	0.00
6,500.0	0.00	0.32	6,280.7	-15.6	-1,190.0	1,190.1	0.00	0.00	0.00
6,600.0	0.00	0.32	6,380.7	-15.6	-1,190.0	1,190.1	0.00	0.00	0.00
6,700.0	0.00	0.32	6,480.7	-15.6	-1,190.0	1,190.1	0.00	0.00	0.00
6,800.0	0.00	0.32	6,580.7	-15.6	-1,190.0	1,190.1	0.00	0.00	0.00
6,900.0	0.00	0.32	6,680.7	-15.6	-1,190.0	1,190.1	0.00	0.00	0.00
7,000.0	0.00	0.32	6,780.7	-15.6	-1,190.0	1,190.1	0.00	0.00	0.00
7,100.0	0.00	0.32	6,880.7	-15.6	-1,190.0	1,190.1	0.00	0.00	0.00
7,200.0	0.00	0.32	6,980.7	-15.6	-1,190.0	1,190.1	0.00	0.00	0.00
7,300.0	0.00	0.32	7,080.7	-15.6	-1,190.0	1,190.1	0.00	0.00	0.00
7,400.0	0.00	0.32	7,180.7	-15.6	-1,190.0	1,190.1	0.00	0.00	0.00
7,500.0	0.00	0.32	7,280.7	-15.6	-1,190.0	1,190.1	0.00	0.00	0.00
7,600.0	0.00	0.32	7,380.7	-15.6	-1,190.0	1,190.1	0.00	0.00	0.00
7,700.0	0.00	0.32	7,480.7	-15.6	-1,190.0	1,190.1	0.00	0.00	0.00
NIO									
7,763.3	0.00	0.32	7,544.0	-15.6	-1,190.0	1,190.1	0.00	0.00	0.00
7,800.0	0.00	0.32	7,580.7	-15.6	-1,190.0	1,190.1	0.00	0.00	0.00
7,900.0	0.00	0.32	7,680.7	-15.6	-1,190.0	1,190.1	0.00	0.00	0.00
8,000.0	0.00	0.32	7,780.7	-15.6	-1,190.0	1,190.1	0.00	0.00	0.00
8,100.0	0.00	0.32	7,880.7	-15.6	-1,190.0	1,190.1	0.00	0.00	0.00
CD									
8,171.3	0.00	0.32	7,952.0	-15.6	-1,190.0	1,190.1	0.00	0.00	0.00
8,200.0	0.00	0.32	7,980.7	-15.6	-1,190.0	1,190.1	0.00	0.00	0.00
GH									
8,248.3	0.00	0.32	8,029.0	-15.6	-1,190.0	1,190.1	0.00	0.00	0.00
8,300.0	0.00	0.32	8,080.7	-15.6	-1,190.0	1,190.1	0.00	0.00	0.00
8,400.0	0.00	0.32	8,180.7	-15.6	-1,190.0	1,190.1	0.00	0.00	0.00

Database:	EDM 2003.21 Single User Db	Local Co-ordinate Reference:	Well WASTE 5-21
Company:	ANADARKO PETROLEUM CORP.	TVD Reference:	WELL @ 5213.0ft (Original Well Elev)
Project:	ANADARKO COLORADO NORTHERN ZONE NAD 83	MD Reference:	WELL @ 5213.0ft (Original Well Elev)
Site:	WELD_WASTE 6-21	North Reference:	True
Well:	WASTE 5-21	Survey Calculation Method:	Minimum Curvature
Wellbore:	WASTE 5-21		
Design:	WASTE 5-21 (wp01)		

Planned Survey

Measured Depth (ft)	Inclination (°)	Azimuth (°)	Vertical Depth (ft)	+N/-S (ft)	+E/-W (ft)	Vertical Section (ft)	Dogleg Rate (°/100ft)	Build Rate (°/100ft)	Turn Rate (°/100ft)
8,500.0	0.00	0.32	8,280.7	-15.6	-1,190.0	1,190.1	0.00	0.00	0.00
8,600.0	0.00	0.32	8,380.7	-15.6	-1,190.0	1,190.1	0.00	0.00	0.00
J									
8,601.3	0.00	0.32	8,382.0	-15.6	-1,190.0	1,190.1	0.00	0.00	0.00
8,700.0	0.00	0.32	8,480.7	-15.6	-1,190.0	1,190.1	0.00	0.00	0.00
TD at 8736.3									
8,736.3	0.00	0.32	8,517.0	-15.6	-1,190.0	1,190.1	0.00	0.00	0.00

Design Targets

Target Name	Dip Angle (°)	Dip Dir. (°)	TVD (ft)	+N/-S (ft)	+E/-W (ft)	Northing (ft)	Easting (ft)	Latitude	Longitude
- hit/miss target									
- Shape									
WASTE 5-21 BHL	0.00	0.31	8,517.0	-15.6	-1,190.0	1,257,226.82	3,135,545.48	40° 2' 18.456 N	105° 0' 57.236 W
- plan hits target center									
- Point									

Casing Points

Measured Depth (ft)	Vertical Depth (ft)	Name	Casing Diameter (")	Hole Diameter (")
950.6	950.0	9 5/8"	9-5/8	12-1/4

Formations

Measured Depth (ft)	Vertical Depth (ft)	Name	Lithology	Dip (°)	Dip Direction (°)
4,981.3	4,762.0	SX		0.00	
4,481.0	4,262.0	PX		0.00	
8,171.3	7,952.0	CD		0.00	
7,763.3	7,544.0	NIO		0.00	
8,248.3	8,029.0	GH		0.00	
8,601.3	8,382.0	J		0.00	

Plan Annotations

Measured Depth (ft)	Vertical Depth (ft)	+N/-S (ft)	+E/-W (ft)	Comment
650.0	650.0	0.0	0.0	Start Build 2.00
1,866.6	1,830.4	-3.3	-254.5	Start 1653.1 hold at 1866.6 MD
3,519.7	3,336.6	-12.3	-935.5	Start Drop -2.00
4,736.3	4,517.0	-15.6	-1,190.0	Start 4000.0 hold at 4736.3 MD
8,736.3	8,517.0	-15.6	-1,190.0	TD at 8736.3



ANADARKO PETROLEUM CORP.

**ANADARKO COLORADO NORTHERN ZONE NAD 83
WELD_WASTE 6-21
WASTE 5-21**

**WASTE 5-21
WASTE 5-21 (wp01)**

Anticollision Summary Report

05 October, 2010



Company:	ANADARKO PETROLEUM CORP.	Local Co-ordinate Reference:	Well WASTE 5-21
Project:	ANADARKO COLORADO NORTHERN ZONE NAD 83	TVD Reference:	WELL @ 5213.0ft (Original Well Elev)
Reference Site:	WELD_WASTE 6-21	MD Reference:	WELL @ 5213.0ft (Original Well Elev)
Site Error:	0.0ft	North Reference:	True
Reference Well:	WASTE 5-21	Survey Calculation Method:	Minimum Curvature
Well Error:	0.0ft	Output errors are at	2.00 sigma
Reference Wellbore	WASTE 5-21	Database:	EDM 2003.21 Single User Db
Reference Design:	WASTE 5-21 (wp01)	Offset TVD Reference:	Offset Datum

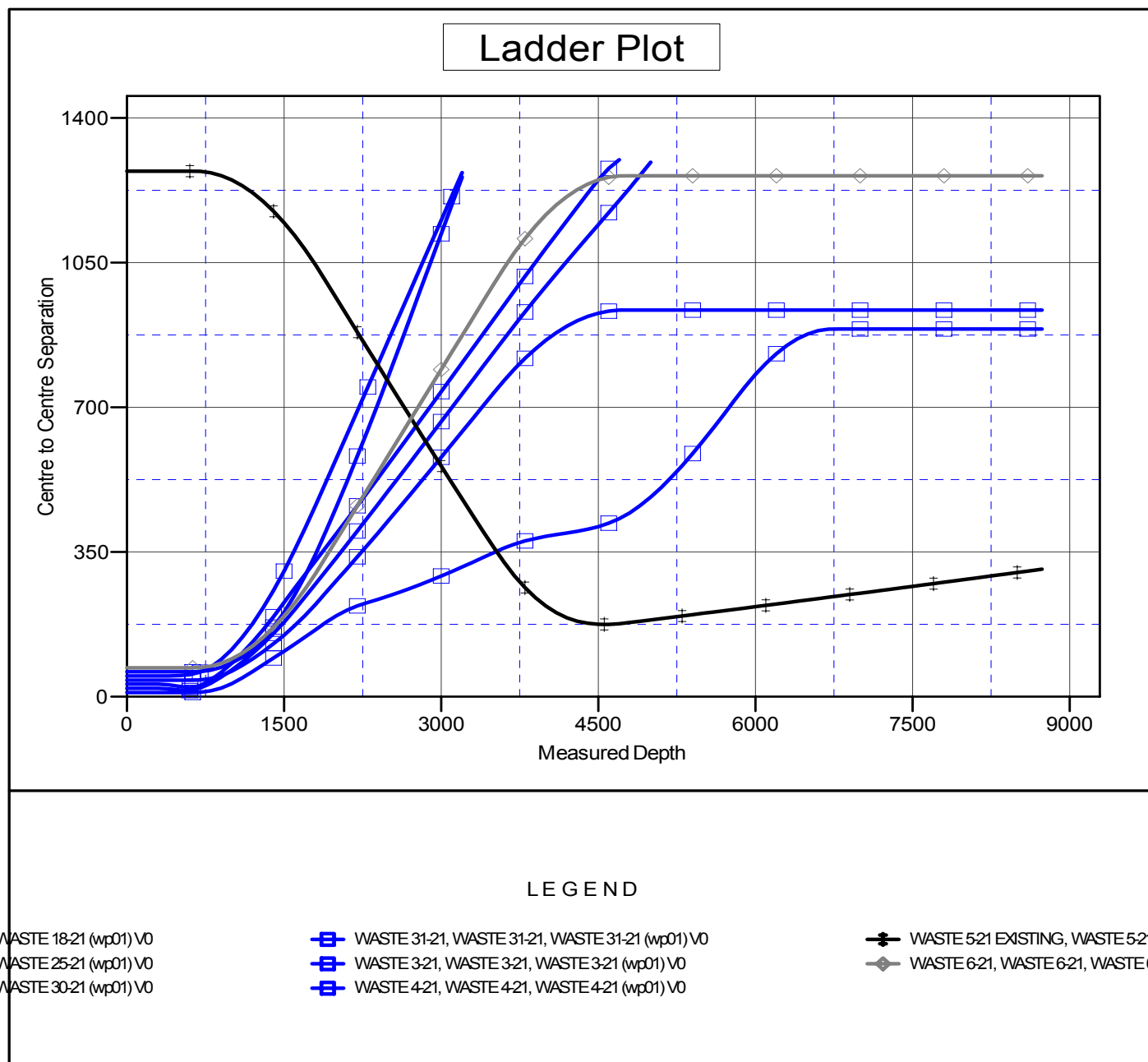
Reference	WASTE 5-21 (wp01)		
Filter type:	NO GLOBAL FILTER: Using user defined selection & filtering criteria		
Interpolation Method:	MD Interval 100.0ft	Error Model:	ISCWSA
Depth Range:	Unlimited	Scan Method:	Closest Approach 3D
Results Limited by:	Maximum center-center distance of 1,300.8ft	Error Surface:	Elliptical Conic
Warning Levels Evaluated at:	2.00 Sigma		

Survey Tool Program	Date	10/5/2010		
From (ft)	To (ft)	Survey (Wellbore)	Tool Name	Description
0.0	8,736.3	WASTE 5-21 (wp01) (WASTE 5-21)	MWD	MWD - Standard

Summary						
Site Name Offset Well - Wellbore - Design	Reference Measured Depth (ft)	Offset Measured Depth (ft)	Distance Between Centres (ft)	Distance Between Ellipses (ft)	Separation Factor	Warning
WELD_WASTE 6-21						
WASTE 3-21 - WASTE 3-21 - WASTE 3-21 (wp01)	300.0	300.0	50.1	49.0	44.598 CC	
WASTE 3-21 - WASTE 3-21 - WASTE 3-21 (wp01)	400.0	399.8	50.3	48.7	31.920 ES	
WASTE 30-21 - WASTE 30-21 - WASTE 30-21 (wp01)	579.0	579.5	14.9	12.5	6.216 CC, ES	
WASTE 18-21 - WASTE 18-21 - WASTE 18-21 (wp01)	600.0	600.0	40.0	37.6	16.195 CC	
WASTE 25-21 - WASTE 25-21 - WASTE 25-21 (wp01)	600.0	600.0	60.2	57.7	24.349 CC	
WASTE 30-21 - WASTE 30-21 - WASTE 30-21 (wp01)	600.0	600.3	15.0	12.5	6.041 SF	
WASTE 31-21 - WASTE 31-21 - WASTE 31-21 (wp01)	600.0	600.0	10.1	7.6	4.080 CC	
WASTE 6-21 - WASTE 6-21 - WASTE 6-21 (wp01)	600.0	600.0	70.0	67.5	28.312 CC	
WASTE 4-21 - WASTE 4-21 - WASTE 4-21 (wp01)	604.2	605.1	22.4	19.8	8.813 CC, ES, SF	
WASTE 18-21 - WASTE 18-21 - WASTE 18-21 (wp01)	627.8	627.8	40.1	37.5	15.453 ES	
WASTE 25-21 - WASTE 25-21 - WASTE 25-21 (wp01)	627.8	627.8	60.3	57.7	23.221 ES	
WASTE 6-21 - WASTE 6-21 - WASTE 6-21 (wp01)	627.8	627.8	70.1	67.5	26.996 ES	
WASTE 31-21 - WASTE 31-21 - WASTE 31-21 (wp01)	627.8	627.8	10.2	7.6	3.912 ES	
WASTE 3-21 - WASTE 3-21 - WASTE 3-21 (wp01)	700.0	696.9	59.4	56.4	19.964 SF	
WASTE 31-21 - WASTE 31-21 - WASTE 31-21 (wp01)	700.0	700.0	10.5	7.6	3.610 SF	
WASTE 18-21 - WASTE 18-21 - WASTE 18-21 (wp01)	800.0	799.9	44.0	40.6	13.157 SF	
WASTE 25-21 - WASTE 25-21 - WASTE 25-21 (wp01)	900.0	899.7	71.1	67.3	18.847 SF	
WASTE 6-21 - WASTE 6-21 - WASTE 6-21 (wp01)	900.0	899.7	80.9	77.1	21.445 SF	
WASTE 5-21 EXISTING - WASTE 5-21 EXISTING - WA	4,558.4	4,336.4	174.7	142.0	5.335 CC	
WASTE 5-21 EXISTING - WASTE 5-21 EXISTING - WA	4,600.0	4,378.0	174.9	141.8	5.293 ES	
WASTE 5-21 EXISTING - WASTE 5-21 EXISTING - WA	4,700.0	4,477.9	176.6	143.0	5.259 SF	

Company:	ANADARKO PETROLEUM CORP.	Local Co-ordinate Reference:	Well WASTE 5-21
Project:	ANADARKO COLORADO NORTHERN ZONE NAD 83	TVD Reference:	WELL @ 5213.0ft (Original Well Elev)
Reference Site:	WELD_WASTE 6-21	MD Reference:	WELL @ 5213.0ft (Original Well Elev)
Site Error:	0.0ft	North Reference:	True
Reference Well:	WASTE 5-21	Survey Calculation Method:	Minimum Curvature
Well Error:	0.0ft	Output errors are at	2.00 sigma
Reference Wellbore	WASTE 5-21	Database:	EDM 2003.21 Single User Db
Reference Design:	WASTE 5-21 (wp01)	Offset TVD Reference:	Offset Datum

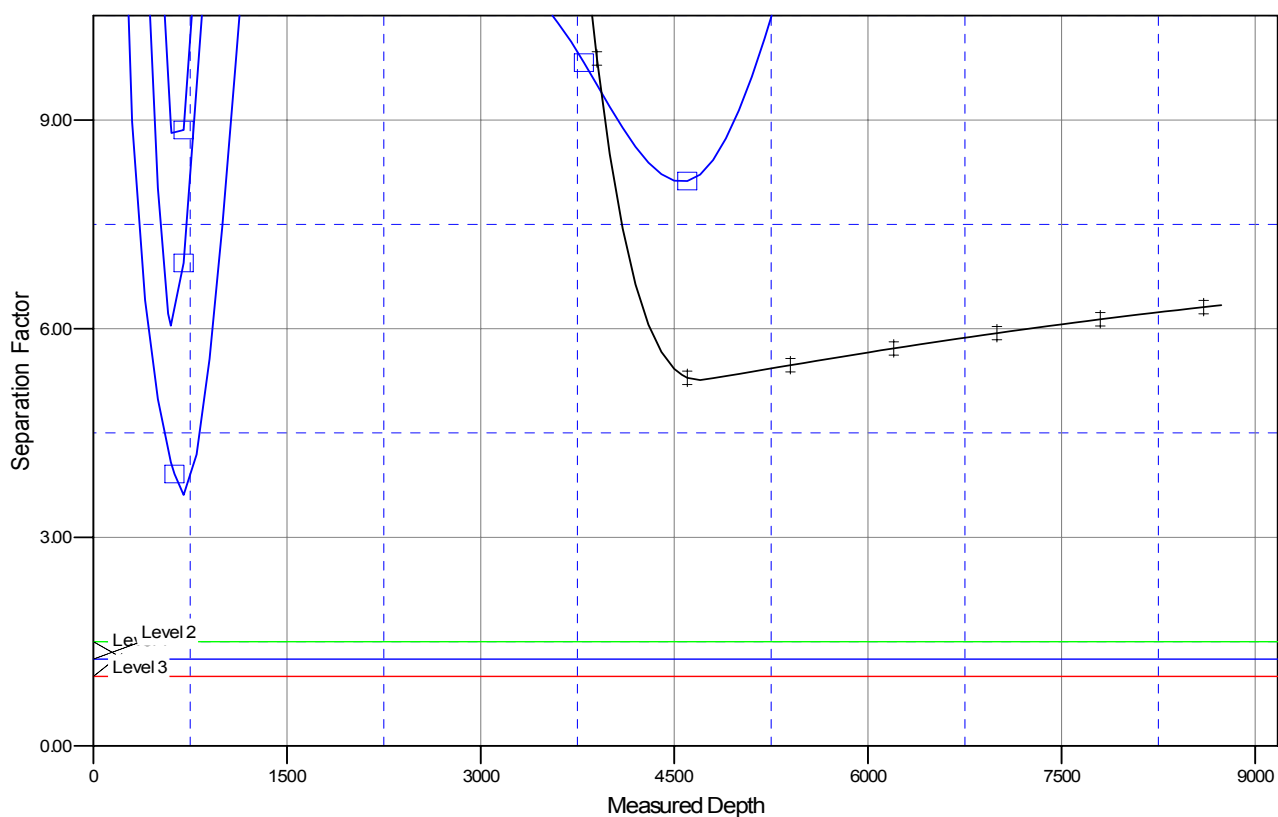
Reference Depths are relative to WELL @ 5213.0ft (Original Well Elev) Coordinates are relative to: WASTE 5-21
Offset Depths are relative to Offset Datum
Central Meridian is 105° 30' 0.000 W °
Coordinate System is US State Plane 1983, Colorado Northern Zone
Grid Convergence at Surface is: 0.32°



Company:	ANADARKO PETROLEUM CORP.	Local Co-ordinate Reference:	Well WASTE 5-21
Project:	ANADARKO COLORADO NORTHERN ZONE NAD 83	TVD Reference:	WELL @ 5213.0ft (Original Well Elev)
Reference Site:	WELD_WASTE 6-21	MD Reference:	WELL @ 5213.0ft (Original Well Elev)
Site Error:	0.0ft	North Reference:	True
Reference Well:	WASTE 5-21	Survey Calculation Method:	Minimum Curvature
Well Error:	0.0ft	Output errors are at	2.00 sigma
Reference Wellbore	WASTE 5-21	Database:	EDM 2003.21 Single User Db
Reference Design:	WASTE 5-21 (wp01)	Offset TVD Reference:	Offset Datum

Reference Depths are relative to WELL @ 5213.0ft (Original Well Elev) Coordinates are relative to: WASTE 5-21
Offset Depths are relative to Offset Datum Coordinate System is US State Plane 1983, Colorado Northern Zone
Central Meridian is 105° 30' 0.000 W ° Grid Convergence at Surface is: 0.32°

Separation Factor Plot



LEGEND

WASTE 18-21 (wp01) V0
WASTE 25-21 (wp01) V0
WASTE 30-21 (wp01) V0

WASTE 31-21, WASTE 31-21, WASTE 31-21 (wp01) V0
WASTE 3-21, WASTE 3-21, WASTE 3-21 (wp01) V0
WASTE 4-21, WASTE 4-21, WASTE 4-21 (wp01) V0

WASTE 5-21 EXISTING, WASTE 5-21 EXISTING
WASTE 6-21, WASTE 6-21, WASTE 6-21