

The Road to Excellence Starts with Safety

Sold To #: 359915	Ship To #: 2747515	Quote #:	Sales Order #: 6930671
Customer: SYNERGY RESOURCES CORPORATION	Customer Rep: Libhart, Don		
Well Name: Meyer	Well #: 2	API/UWI #: 05-123-29169-00	
Field: WATTENBERG	City (SAP): EVANS	County/Parish: Weld	State: Colorado
Legal Description: Section 21 Township 5N Range 66W			
Contractor: ENSIGN	Rig/Platform Name/Num: 122		
Job Purpose: Cement Production Casing			
Well Type: Development Well	Job Type: Cement Production Casing		
Sales Person: FLING, MATTHEW	Srvc Supervisor: GIBBS, JASON	MBU ID Emp #: 300487	

Job Personnel

HES Emp Name	Exp Hrs	Emp #	HES Emp Name	Exp Hrs	Emp #	HES Emp Name	Exp Hrs	Emp #
GIBBS, JASON Edwin	6.0	300487	SIPNEFSKI, ROBERT Anthony	6.0	419391	VASQUEZ, ALVARO A	6.0	401745
WILEY, JAMES A	6.0	440080						

Equipment

HES Unit #	Distance-1 way	HES Unit #	Distance-1 way	HES Unit #	Distance-1 way	HES Unit #	Distance-1 way
10248053C	27 mile	10679720C	27 mile	10759930C	27 mile	10829457	27 mile
11019275C	27 mile						

Job Hours

Date	On Location Hours	Operating Hours	Date	On Location Hours	Operating Hours	Date	On Location Hours	Operating Hours

TOTAL Total is the sum of each column separately

Job

Job Times

Formation Name	Formation Depth (MD)	Top	Bottom	Form Type	Job depth MD	Job Depth TVD	Water Depth	Perforation Depth (MD)	From	To	Called Out	Date	Time	Time Zone
				BHST	8001. ft	8001. ft						03 - Oct - 2009	14:00	MST
											On Location	03 - Oct - 2009	17:00	MST
											Job Started	03 - Oct - 2009	20:46	MST
											Job Completed	03 - Oct - 2009	21:53	MST
											Departed Loc	03 - Oct - 2009	22:30	MST

Well Data

Description	New / Used	Max pressure psig	Size in	ID in	Weight lbm/ft	Thread	Grade	Top MD ft	Bottom MD ft	Top TVD ft	Bottom TVD ft
Open Hole				7.875				462.	8001.	.	.
Production Casing	New		4.5	4.	11.6			.	8001.	.	.
Surface Casing	Used		8.625	8.097	24.		J-55	.	462.	.	.

Sales/Rental/3rd Party (HES)

Description	Qty	Qty uom	Depth	Supplier
SHOE,FLT,4-1/2 8RD,2-3/4 SSII	1	EA		
CLR,FLT,4-1/2 8RD,9.5-13.5PPF,2-3/4	1	EA		
CENTRALIZER ASSY - API - 4-1/2 CSG X	45	EA		
CLAMP - LIMIT - 4-1/2 - HINGED -	1	EA		
PLUG,CMTG,TOP,4 1/2,HWE,3.65 MIN/4.14 MA	1	EA		
KIT,HALL WELD-A	1	EA		

Tools and Accessories

Type	Size	Qty	Make	Depth	Type	Size	Qty	Make	Depth	Type	Size	Qty	Make
Guide Shoe					Packer					Top Plug			
Float Shoe					Bridge Plug					Bottom Plug			
Float Collar					Retainer					SSR plug set			
Insert Float										Plug Container			
Stage Tool										Centralizers			

Miscellaneous Materials													
Gelling Agt		Conc		Surfactant		Conc		Acid Type		Qty		Conc	%
Treatment Fld		Conc		Inhibitor		Conc		Sand Type		Size		Qty	
Fluid Data													
Stage/Plug #: 1													
Fluid #	Stage Type	Fluid Name			Qty	Qty uom	Mixing Density lbm/gal	Yield ft ³ /sk	Mix Fluid Gal/sk	Rate bbl/min	Total Mix Fluid Gal/sk		
1	Water Spacer				10.00	bbl	8.33	.0	.0	5.0			
2	MUD FLUSH III	MUD FLUSH III - SBM (528788)			24.00	bbl	8.4	.0	.0	5.0			
3	Versacem 12#	VERSACEM (TM) SYSTEM (452010)			330.0	sacks	12.	2.49	13.91	7.0	13.91		
4	Versacem 13#	VERSACEM (TM) SYSTEM (452010)			230.0	sacks	13.	1.96	9.93	7.0	9.93		
5	CLAYFIX 3				124.00	bbl	8.33	.0	.0	.0			
2.5 gal/Mgal		CLAYFIX 3, TOTETANK (101583425)											
Calculated Values				Pressures				Volumes					
Displacement		Shut In: Instant		Lost Returns		Cement Slurry		Pad					
Top Of Cement		5 Min		Cement Returns		Actual Displacement		Treatment					
Frac Gradient		15 Min		Spacers		Load and Breakdown		Total Job					
Rates													
Circulating		Mixing		Displacement		Avg. Job							
Cement Left In Pipe		Amount	14 ft	Reason	Shoe Joint								
Frac Ring # 1 @	ID	Frac ring # 2 @	ID	Frac Ring # 3 @	ID	Frac Ring # 4 @	ID						
The Information Stated Herein Is Correct				Customer Representative Signature									

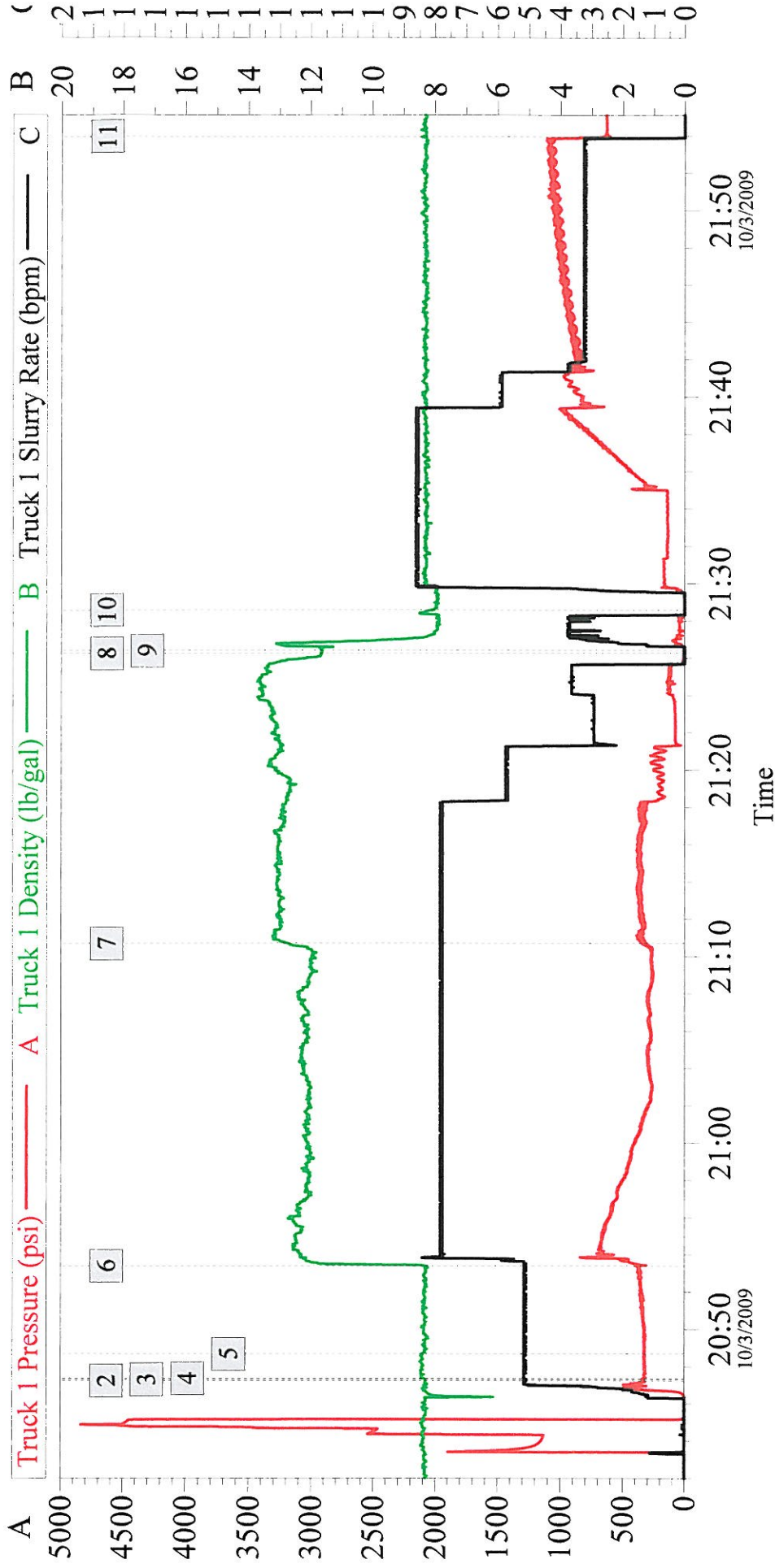
The Road to Excellence Starts with Safety

Sold To #: 359915	Ship To #: 2747515	Quote #:	Sales Order #: 6930671
Customer: SYNERGY RESOURCES CORPORATION		Customer Rep: Libhart, Don	
Well Name: Meyer	Well #: 2	API/UWI #: 05-123-29169-00	
Field: WATTENBERG	City (SAP): EVANS	County/Parish: Weld	State: Colorado
Legal Description: Section 21 Township 5N Range 66W			
Lat: N 0 deg. OR N 0 deg. 0 min. 0 secs.		Long: E 0 deg. OR E 0 deg. 0 min. 0 secs.	
Contractor: ENSIGN		Rig/Platform Name/Num: 122	
Job Purpose: Cement Production Casing			Ticket Amount:
Well Type: Development Well		Job Type: Cement Production Casing	
Sales Person: FLING, MATTHEW		Srvc Supervisor: GIBBS, JASON	MBU ID Emp #: 300487

Activity Description	Date/Time	Cht #	Rate bbl/ min	Volume bbl		Pressure psig		Comments
				Stage	Total	Tubing	Casing	
Arrive at Location from Service Center	10/03/2009 17:00							
Assessment Of Location Safety Meeting	10/03/2009 17:30							
Start Job	10/03/2009 20:47							
Safety Meeting	10/03/2009 20:47							
Test Lines	10/03/2009 20:48							Test Lines 4700 psi
Pump Spacer 1	10/03/2009 20:48		5	10				H2O supplied by the rig.
Pump Spacer 2	10/03/2009 20:48		5	24				1000 gal Mudflush Spacer III mixed with H2O supplied by rig.
Pump Lead Cement	10/03/2009 20:53		7	146				330 sks of VersaCem @ 12.0 #/gal mixed with H2O supplied by rig.
Pump Tail Cement	10/03/2009 21:10		7	80				230 sks of VersaCem @ 13.0 #/gal mixed with H2O supplied by rig.
Shutdown	10/03/2009 21:26							
Clean Lines	10/03/2009 21:26							
Drop Top Plug	10/03/2009 21:26							
Pump Displacement	10/03/2009 21:28		8	120				H2O supplied by the rig.
Shut In Well	10/03/2009 21:53							Never bump plug went 4 bbl past open release line and flow didn't stop closed will in.
End Job	10/03/2009 21:55							

Synergy #2

4 1/2" Production



Global Event Log

2	Start Job	20:47:14	3	Test Lines	20:47:18	4	Pump Spacer 1	20:47:21
5	Pump Spacer 2	20:48:40	6	Pump Cement	20:53:24	7	Pump Tail Cement	21:10:42
8	Shutdown	21:26:16	9	Clean Lines	21:26:25	10	Pump Displacement	21:28:35
11	Shut in Well	21:53:58						

Customer: Synergy	Job Date: 03-Oct-2009	Sales Order #: 6930671
Well Description: 4.5" Production	UWI: 05-123-29169-00	