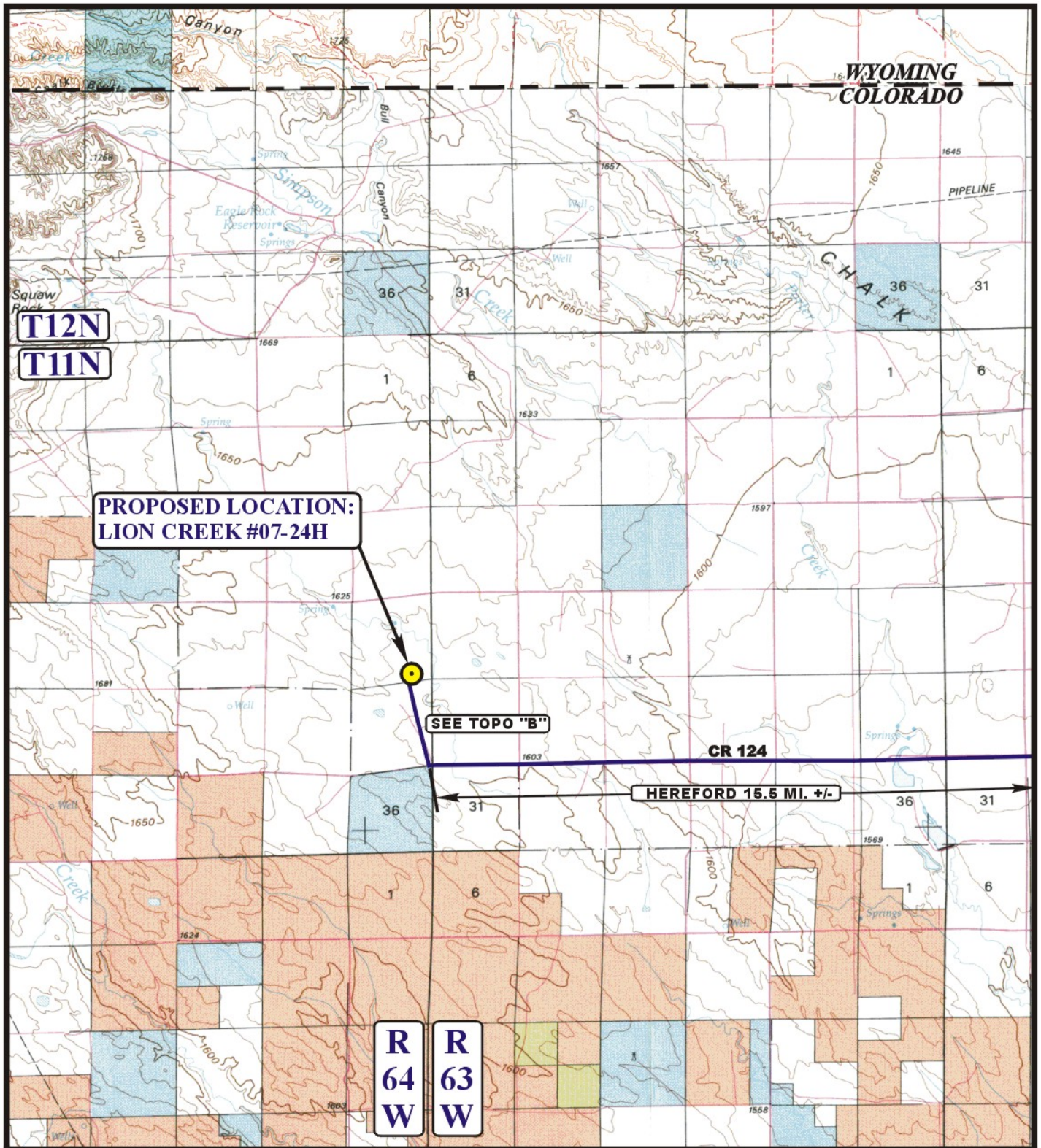


EOG RESOURCES, INC.
LION CREEK #07-24H
SECTION 24, T11N, R64W, 6th P.M.

PROCEED IN A WESTERLY DIRECTION FROM HEREFORD, COLORADO ALONG COUNTY ROAD 136 APPROXIMATELY 1.5 MILES TO THE JUNCTION OF COUNTY ROAD 136 AND HIGHWAY 77 TO THE SOUTH; TURN LEFT AND PROCEED IN A SOUTHERLY DIRECTION APPROXIMATELY 6.0 MILES TO THE JUNCTION OF COUNTY ROAD 77 AND COUNTY ROAD 124 TO THE WEST; TURN RIGHT AND PROCEED IN A WESTERLY DIRECTION APPROXIMATELY 8.0 MILES TO THE BEGINNING OF THE PROPOSED ACCESS TO THE NORTH; FOLLOW ROAD FLAGS IN A NORTHERLY DIRECTION APPROXIMATELY 5617' TO THE PROPOSED LOCATION.

TOTAL DISTANCE FROM HEREFORD, COLORADO TO THE PROPOSED LOCATION IS APPROXIMATELY 16.6 MILES.



LEGEND:

PROPOSED LOCATION



EOG RESOURCES, INC.

LION CREEK #07-24H
SECTION 24, T11N, R64W, 6th P.M.
501' FSL 1270' FEL



Uintah Engineering & Land Surveying
85 South 200 East Vernal, Utah 84078
(435) 789-1017 * FAX (435) 789-1813

**ACCESS ROAD
MAP**

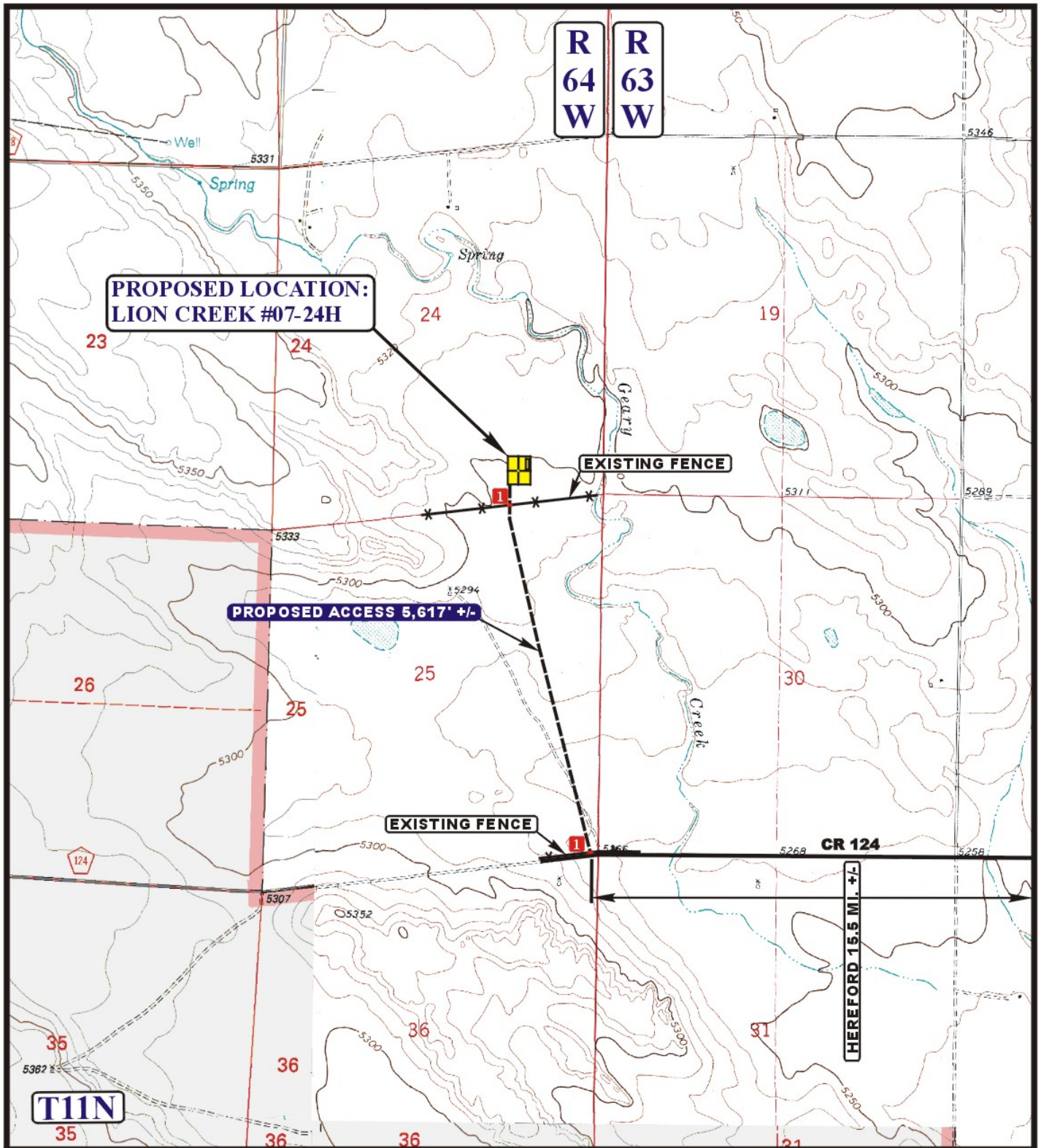
11 04 10
MONTH DAY YEAR

SCALE: 1:100,000

DRAWN BY: Z.L.

REVISED: 00-00-00





LEGEND:

- EXISTING ROAD
- PROPOSED ACCESS ROAD
- EXISTING FENCE
- INSTALL CATTLE GUARD



Uintah Engineering & Land Surveying
 85 South 200 East Vernal, Utah 84078
 (435) 789-1017 * FAX (435) 789-1813



EOG RESOURCES, INC.

LION CREEK #07-24H
SECTION 24, T11N, R64W, 6th P.M.
501' FSL 1270' FEL

ACCESS ROAD
MAP

11 **04** **10**
 MONTH DAY YEAR

SCALE: 1" = 2000'

DRAWN BY: Z.L.

REVISED: 00-00-00

B
 TOPO