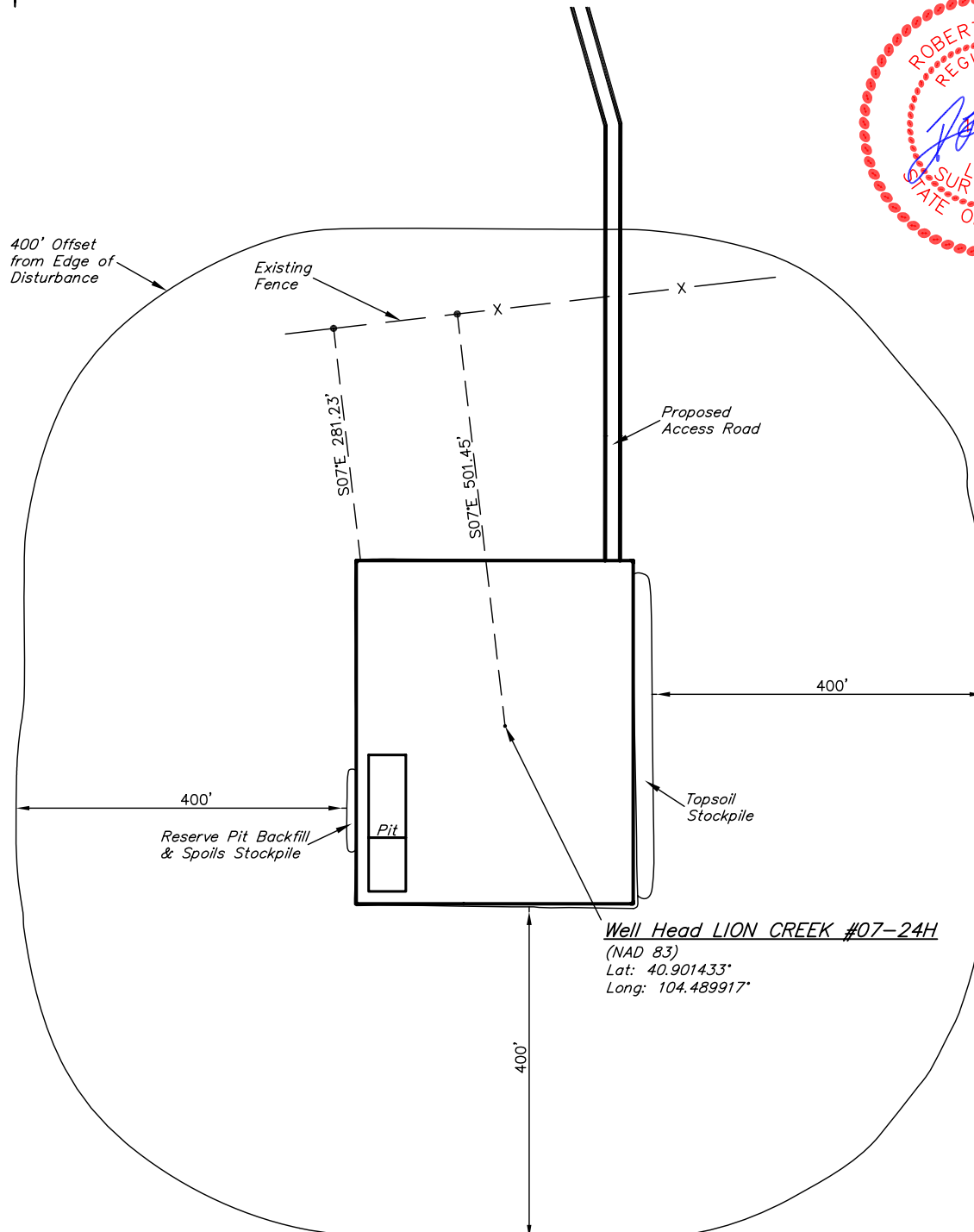


SCALE: 1" = 200'
DATE: 11-4-10
DRAWN BY: J.I.

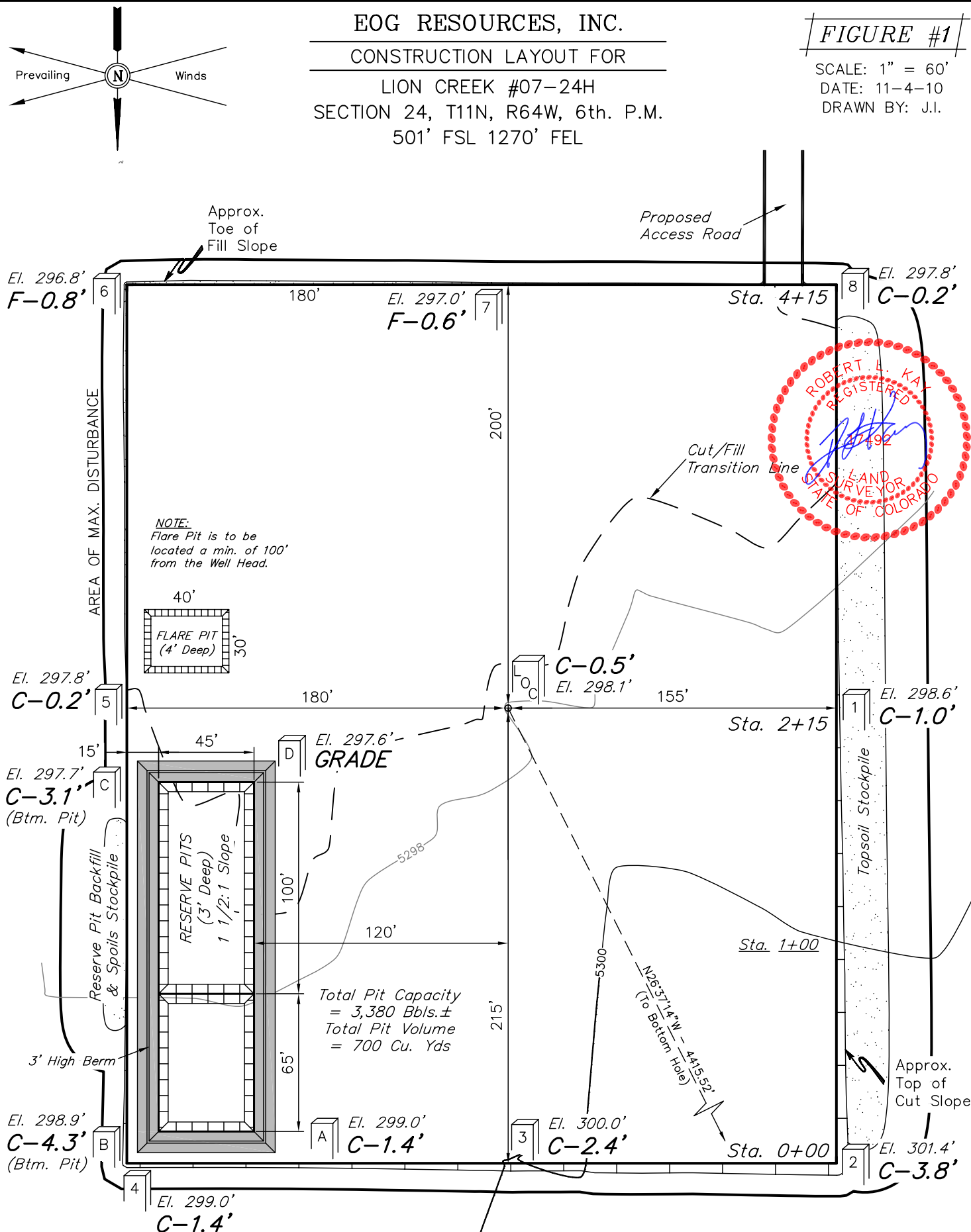


85 So. 200 East * Vernal, Utah 84078 * (435) 789-1017

EOG RESOURCES, INC.
CONSTRUCTION LAYOUT FOR
LION CREEK #07-24H
SECTION 24, T11N, R64W, 6th. P.M.
501' FSL 1270' FEL

FIGURE #1

SCALE: 1" = 60'
DATE: 11-4-10
DRAWN BY: J.I.



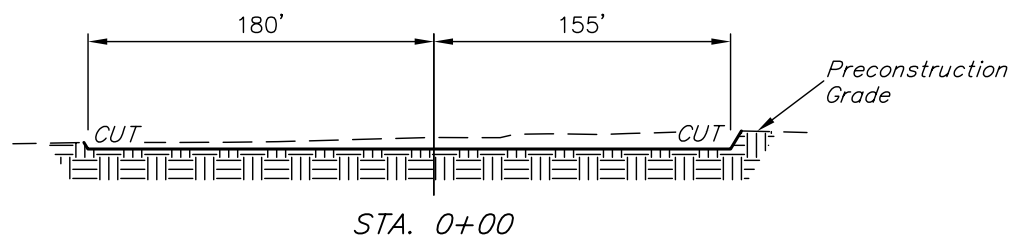
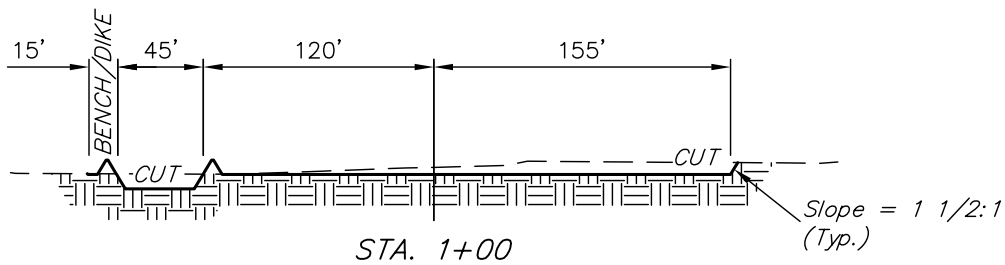
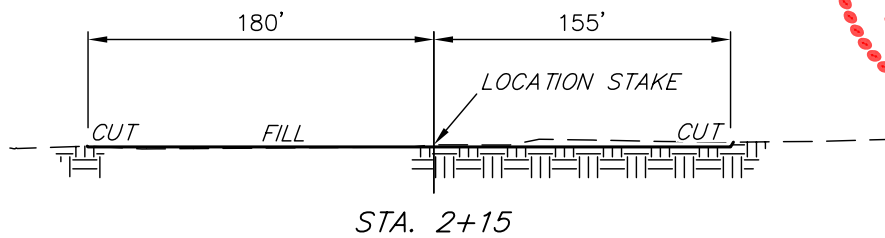
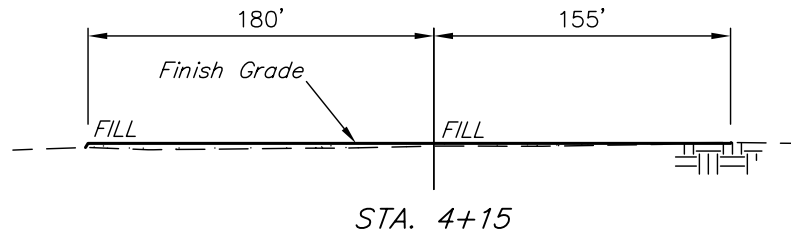
Elev. Ungraded Ground At Loc. Stake = 5298.1'
FINISHED GRADE ELEV. AT LOC. STAKE = 5297.6'

UINTAH ENGINEERING & LAND SURVEYING
85 So. 200 East * Vernal, Utah 84078 * (435) 789-1017

1" = 40'
X-Section
Scale
1" = 100'
DATE: 11-4-10
DRAWN BY: J.I.

EOG RESOURCES, INC.
CONSTRUCTION LAYOUT CROSS SECTIONS FOR
LION CREEK #07-24H
SECTION 24, T11N, R64W, 6th. P.M.
501' FSL 1270' FEL

FIGURE #2



NOTE:

Topsoil should not be Stripped Below Finished Grade on Substructure Area.

APPROXIMATE ACREAGES
WELL SITE DISTURBANCE = ± 3.969 ACRES
ACCESS ROAD DISTURBANCE = ± 3.869 ACRES
TOTAL = ± 7.838 ACRES

* NOTE:
FILL QUANTITY INCLUDES 5% FOR COMPACTION

APPROXIMATE YARDAGES

(6") Topsoil Stripping = 2,660 Cu. Yds.
Remaining Location = 3,350 Cu. Yds.
TOTAL CUT = 6,010 CU.YDS.
FILL = 3,000 CU.YDS.

EXCESS MATERIAL = 3,010 Cu. Yds.
Topsoil & Pit Backfill = 3,010 Cu. Yds.
(1/2 Pit Vol.)
EXCESS UNBALANCE = 0 Cu. Yds.
(After Interim Rehabilitation)

UINTAH ENGINEERING & LAND SURVEYING
85 So. 200 East * Vernal, Utah 84078 * (435) 789-1017

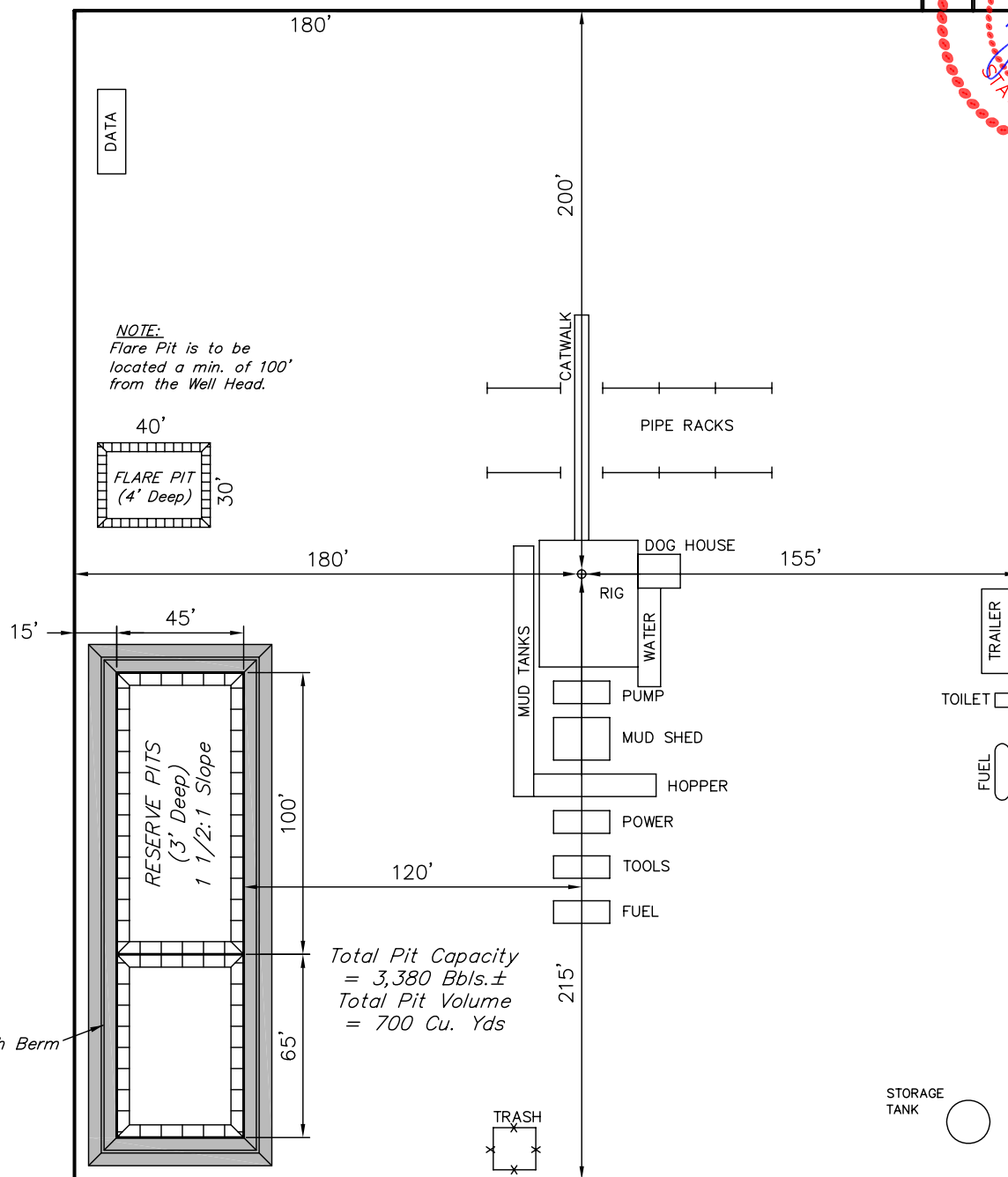
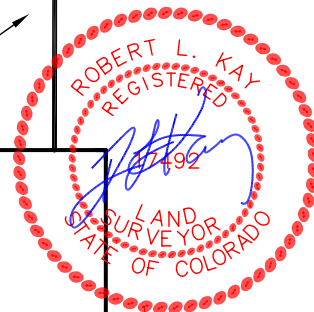
EOG RESOURCES, INC.
 TYPICAL RIG LAYOUT FOR
 LION CREEK #07-24H
 SECTION 24, T11N, R64W, 6th. P.M.
 501' FSL 1270' FEL

FIGURE #3

SCALE: 1" = 60'
 DATE: 11-4-10
 DRAWN BY: J.I.



Proposed
Access Road



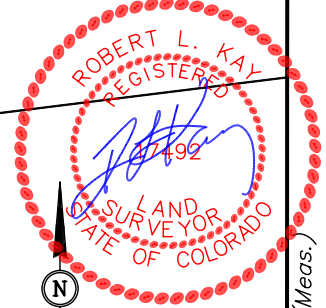
EOG RESOURCES, INC.

LOCATION DRAWING FOR

LION CREEK #07-24H
SECTION 24, T11N, R64W, 6th. P.M.
501' FSL 1270' FEL

FIGURE #5

NE Cor. Sec. 24
1921 Brass Cap,
0.7' Below Ground
Lat: 40.915006°
Long: 104.485339°



SCALE
DATE: 11-4-10
DRAWN BY: J.I.

MEADER
RANCH INC.

MEADER
RANCH INC.

SW Cor. Sec. 24
Brass Cap
Lat: 40.898222°
Long: 104.503200°

S82°10'17"W
2493.96' (Meas.)

Brass Cap
Lat: 40.899653°
Long: 104.494267°

S61°23'00"W - 5000.00'
(To Railroad)

S28°00'00"W - 2018.19'
(To Water Well)

SOUTH - 5790.00'
(To County Road #124)

SOUTH - 5768.00'
(To Power Line)

S83°15'33"W - 2490.38' (Meas.)

Brass Cap
Lat: 40.900464°
Long: 104.485322°

PLANT COMMUNITY

- ☐ DISTURBED GRASSLAND
- ☐ NATIVE GRASSLAND
- ☐ SHRUB LAND
- ☐ PLAINS RIPARIAN
- ☐ MOUNTAIN RIPARIAN
- ☐ FOREST LAND
- ☐ WETLANDS AQUATIC
- ☐ ALPINE
- ☐ OTHER (Describe): _____

CURRENT LAND USE

- CROP LAND: ☐ IRRIGATED ☐ DRY LAND ☐ IMPROVED PASTURE ☐ HAY MEADOW ☐ CRP
- NON-CROP LAND: ☐ RANGELAND ☐ TIMBER ☐ RECREATIONAL ☐ OTHER (Describe) _____
- SUBDIVIDED: ☐ INDUSTRIAL ☐ COMMERCIAL ☐ RESIDENTIAL _____

FUTURE LAND USE

- CROP LAND: ☐ IRRIGATED ☐ DRY LAND ☐ IMPROVED PASTURE ☐ HAY MEADOW ☐ CRP
- NON-CROP LAND: ☐ RANGELAND ☐ TIMBER ☐ RECREATIONAL ☐ OTHER (Describe) _____
- SUBDIVIDED: ☐ INDUSTRIAL ☐ COMMERCIAL ☐ RESIDENTIAL _____