

EOG RESOURCES, INC.

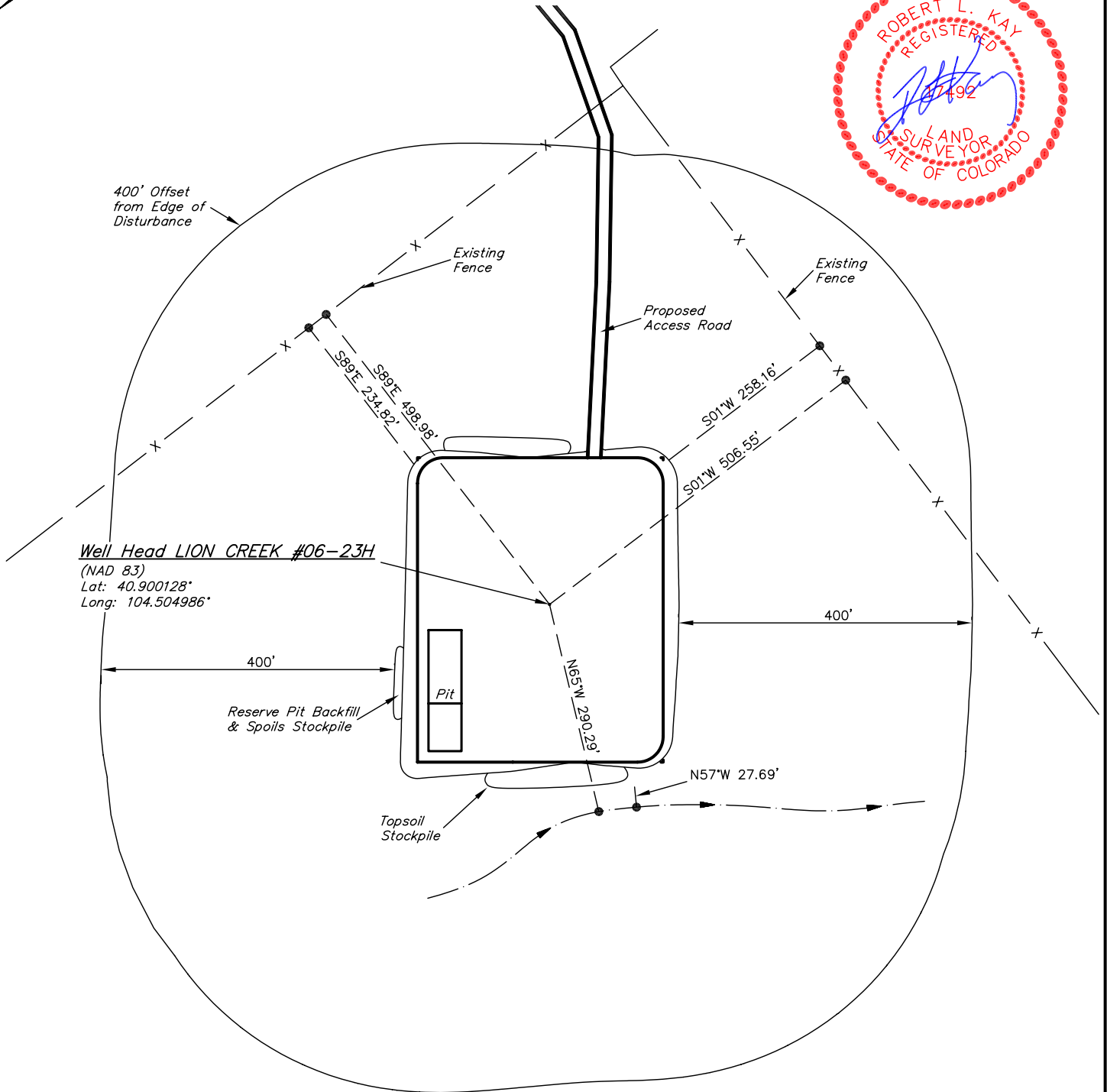
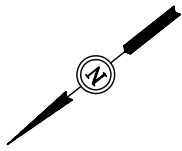
ADDENDUM TO LEGAL PLAT FOR

LION CREEK #06-23H
SECTION 23, T11N, R64W, 6th. P.M.
501' FSL 501' FEL

SCALE: 1" = 200'

DATE: 11-4-10

DRAWN BY: J.I.



EOG RESOURCES, INC.

CONSTRUCTION LAYOUT FOR

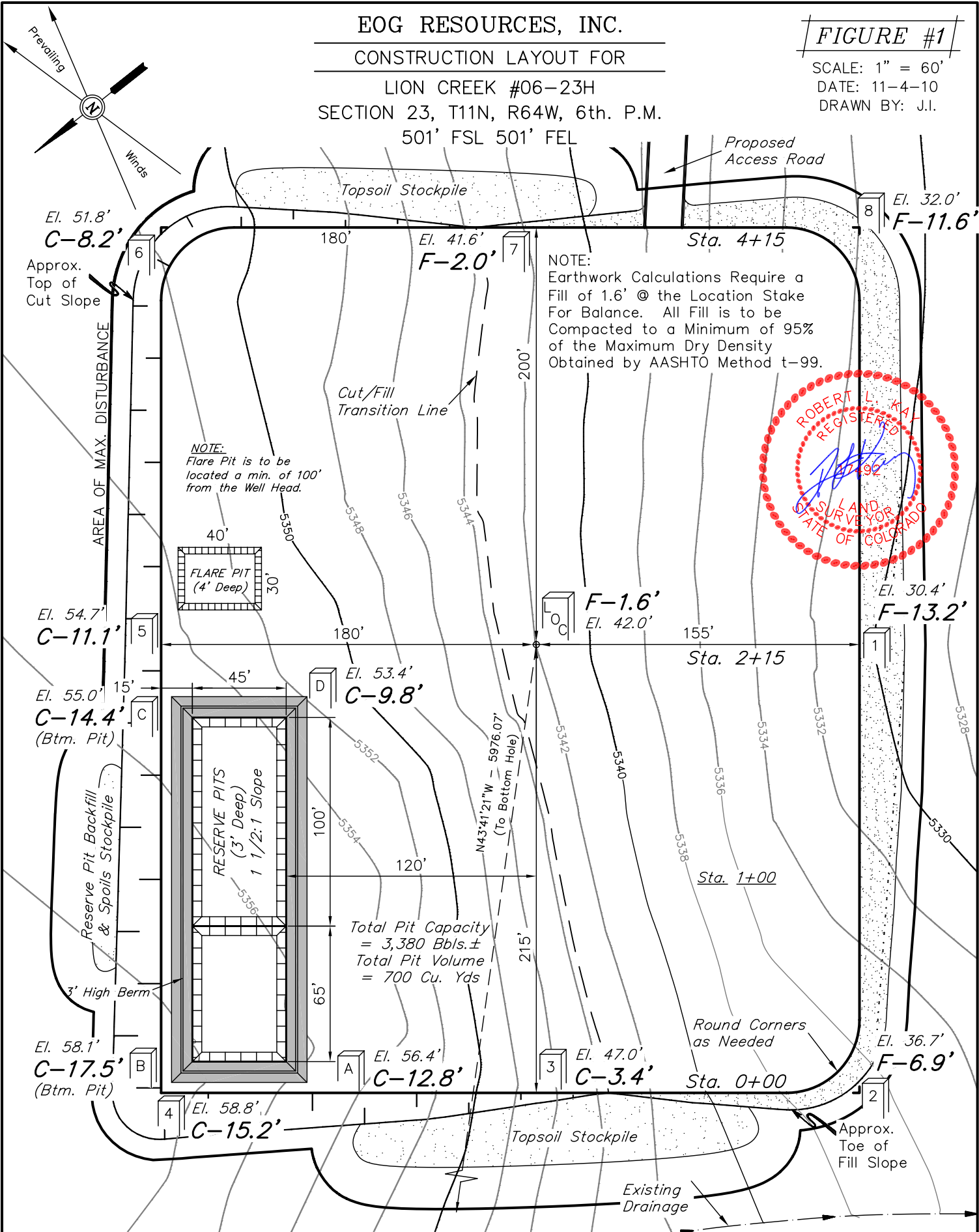
LION CREEK #06-23H
SECTION 23, T11N, R64W, 6th. P.M.
501' FSL 501' FEL

FIGURE #1

SCALE: 1" = 60'

DATE: 11-4-10

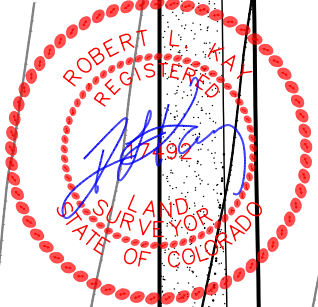
DRAWN BY: J.I.



NOTE:
Earthwork Calculations Require a Fill of 1.6' @ the Location Stake For Balance. All Fill is to be Compacted to a Minimum of 95% of the Maximum Dry Density Obtained by AASHTO Method t-99.

NOTE:
Flare Pit is to be located a min. of 100' from the Well Head.

Total Pit Capacity = 3,380 Bbls. ±
Total Pit Volume = 700 Cu. Yds



Elev. Ungraded Ground At Loc. Stake = 5342.0'
FINISHED GRADE ELEV. AT LOC. STAKE = 5343.6'

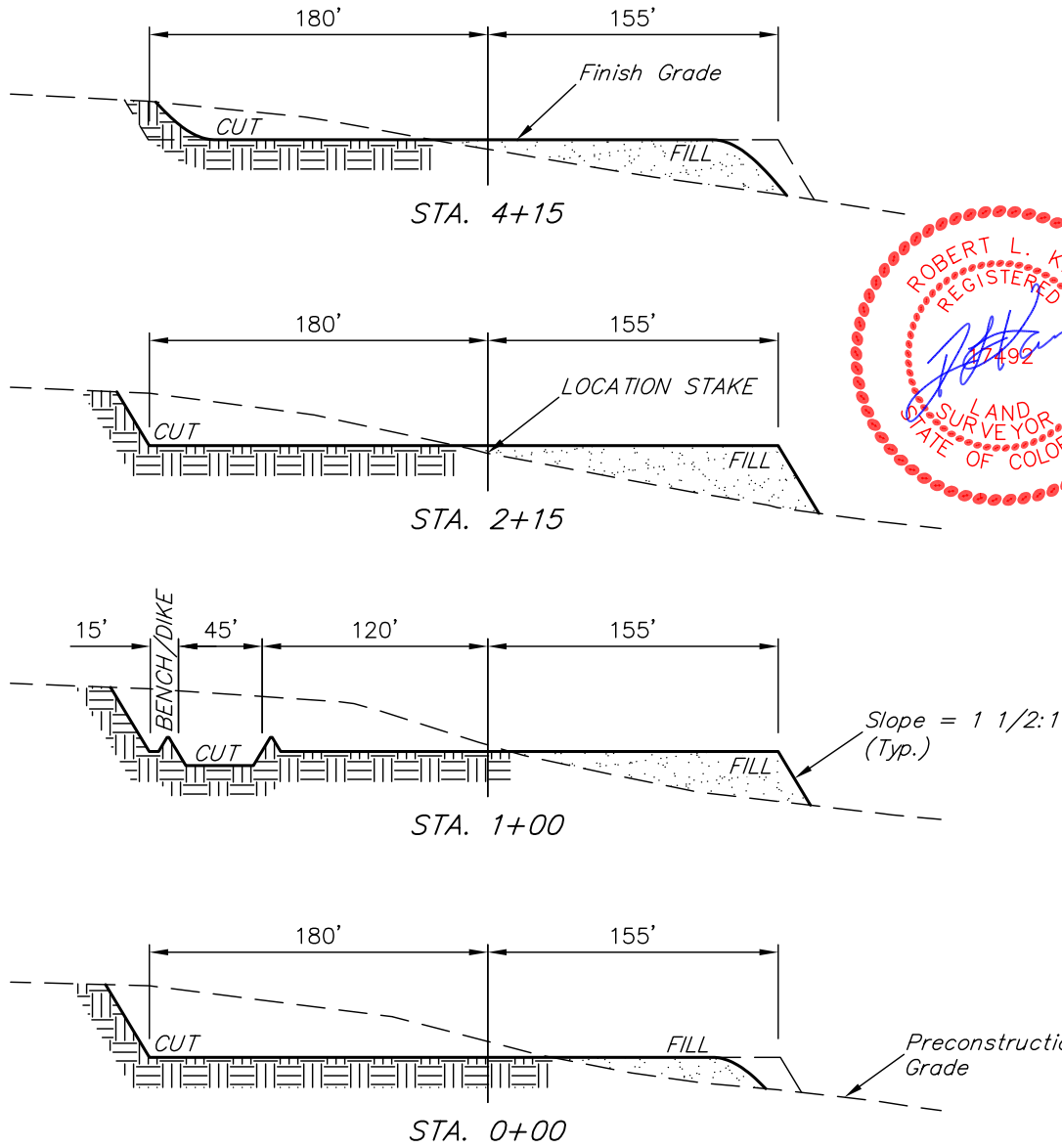
UINTAH ENGINEERING & LAND SURVEYING
85 So. 200 East * Vernal, Utah 84078 * (435) 789-1017

EOG RESOURCES, INC.

FIGURE #2

CONSTRUCTION LAYOUT CROSS SECTIONS FOR
LION CREEK #06-23H
SECTION 23, T11N, R64W, 6th. P.M.
501' FSL 501' FEL

1" = 40'
X-Section Scale
1" = 100'
DATE: 11-4-10
DRAWN BY: J.I.



APPROXIMATE ACREAGES
WELL SITE DISTURBANCE = ± 4.416 ACRES
ACCESS ROAD DISTURBANCE = ± 2.797 ACRES
TOTAL = ± 7.213 ACRES

* NOTE:
FILL QUANTITY INCLUDES
5% FOR COMPACTION

APPROXIMATE YARDAGES

(6") Topsoil Stripping	=	3,060 Cu. Yds.
Remaining Location	=	19,910 Cu. Yds.
TOTAL CUT	=	22,970 CU.YDS.
FILL	=	19,560 CU.YDS.

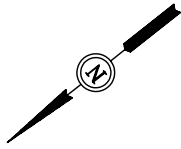
EXCESS MATERIAL	=	3,410 Cu. Yds.
Topsoil & Pit Backfill (1/2 Pit Vol.)	=	3,410 Cu. Yds.
EXCESS UNBALANCE (After Interim Rehabilitation)	=	0 Cu. Yds.

UINTAH ENGINEERING & LAND SURVEYING
85 So. 200 East * Vernal, Utah 84078 * (435) 789-1017

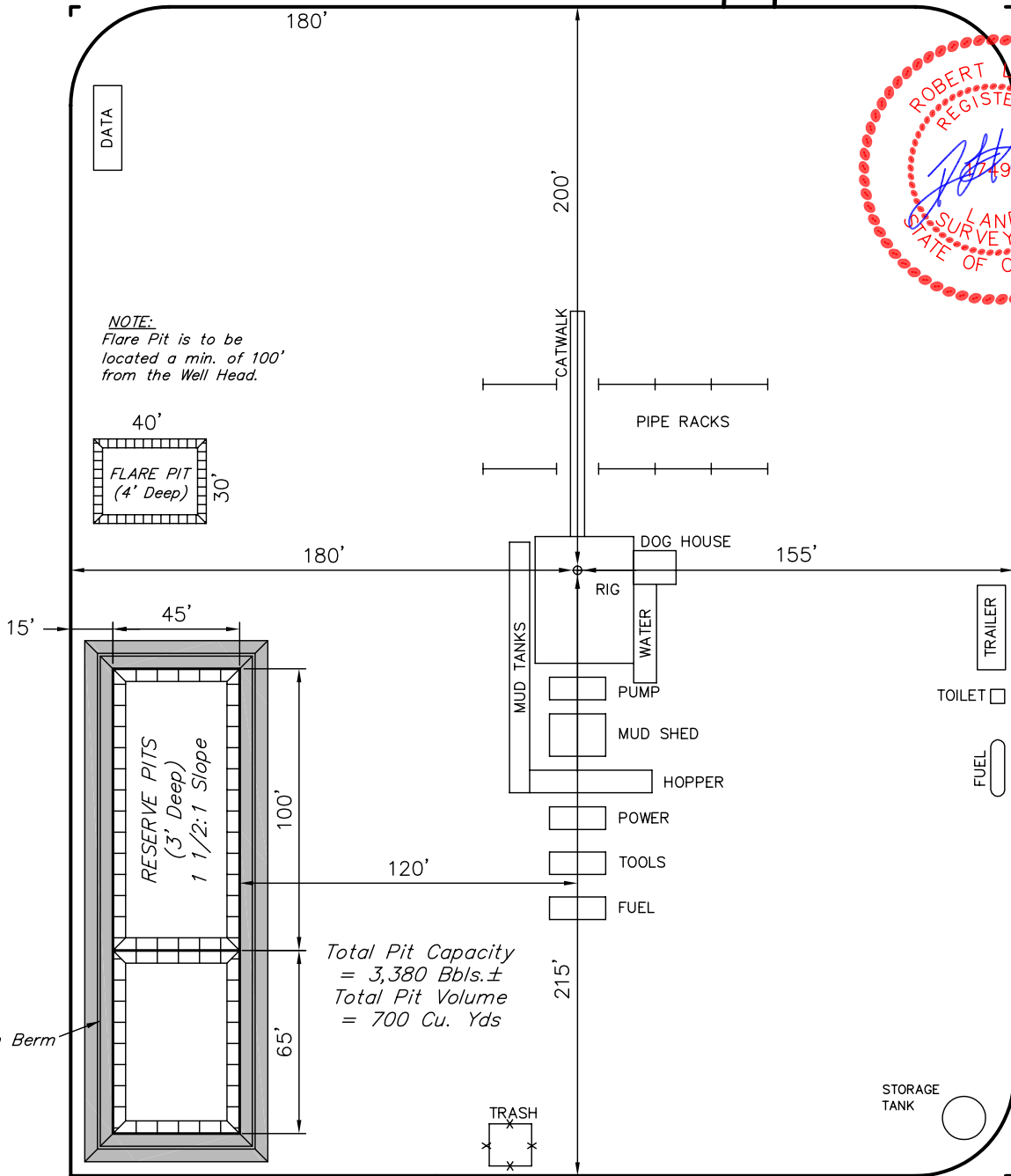
EOG RESOURCES, INC.
 TYPICAL RIG LAYOUT FOR
 LION CREEK #06-23H
 SECTION 23, T11N, R64W, 6th. P.M.
 501' FSL 501' FEL

FIGURE #3

SCALE: 1" = 60'
 DATE: 11-4-10
 DRAWN BY: J.I.



Proposed Access Road

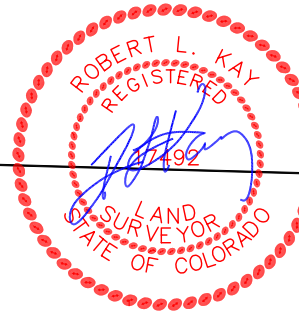


EOG REAOURCES, INC.

LOCATION DRAWING FOR
 LION CREEK #06-23H
 SECTION 23, T11N, R64W, 6th. P.M.
 501' FSL 501' FEL

FIGURE #5

NE Cor. Sec. 23
 1991 Private Alum.
 Cap, LS #16154
 0.5' Below Gravel Road
 Lat: 40.913381°
 Long: 104.502933°



1/4 Section Line

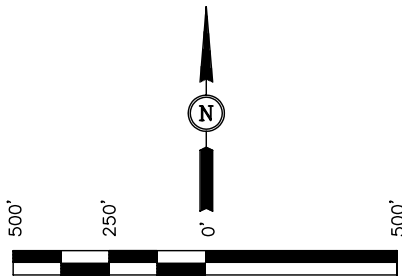
1/4 Section Line

23

1/16 Section Line

500'52'25"W - 5345.93' (Meas.)

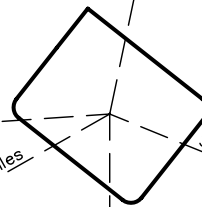
Section Line



SCALE
 DATE: 11-4-10
 DRAWN BY: J.I.

1/16 Section Line

MEADER
 RANCH INC.



SW Cor Sec. 23
 UELS Alum. Cap
 Lat: 40.899192°
 Long: 104.522375°

Brass Cap
 Lat: 40.898939°
 Long: 104.512792°

S86°01'52"W - 4820.88'
 (To County Road #57)

N151°30'E - 4083.20'
 (To Building & Power Line)

S67°49'21"E - 3444.64'
 (To Water Well)

N87°54'34"W
 2652.18' (Meas.)

Section Line

S60°28'00"W - 18.12 Miles
 (To Railroad)

SOUTH
 501.17'
 (To
 Property
 Line)

N88°07'22"W - 2653.51' (Meas.)

Brass Cap
 Lat: 40.898711°
 Long: 104.503200°

PLANT COMMUNITY

- DISTURBED GRASSLAND
- NATIVE GRASSLAND
- SHRUB LAND
- PLAINS RIPARIAN
- MOUNTAIN RIPARIAN
- FOREST LAND
- WETLANDS AQUATIC
- ALPINE
- OTHER (Describe): _____

CURRENT LAND USE

- CROP LAND: IRRIGATED DRY LAND IMPROVED PASTURE HAY MEADOW CRP
- NON-CROP LAND: RANGELAND TIMBER RECREATIONAL OTHER (Describe) _____
- SUBDIVIDED: INDUSTRIAL COMMERCIAL RESIDENTIAL _____

FUTURE LAND USE

- CROP LAND: IRRIGATED DRY LAND IMPROVED PASTURE HAY MEADOW CRP
- NON-CROP LAND: RANGELAND TIMBER RECREATIONAL OTHER (Describe) _____
- SUBDIVIDED: INDUSTRIAL COMMERCIAL RESIDENTIAL _____