

1991 Private Alum.  
Cap, LS #16154  
0.5' Below Gravel Road  
Lat: 40.913644°  
Long: 104.522075°

T11N, R64W, 6th. P.M.

EOG RESOURCES, INC.

Well location, LION CREEK #06-23H, located as shown in the SE 1/4 SE 1/4 of Section 23, T11N, R64W, 6th. P.M., Weld County, Colorado.

### BASIS OF ELEVATION

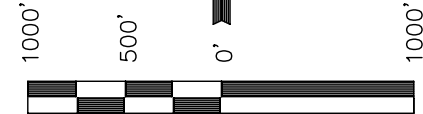
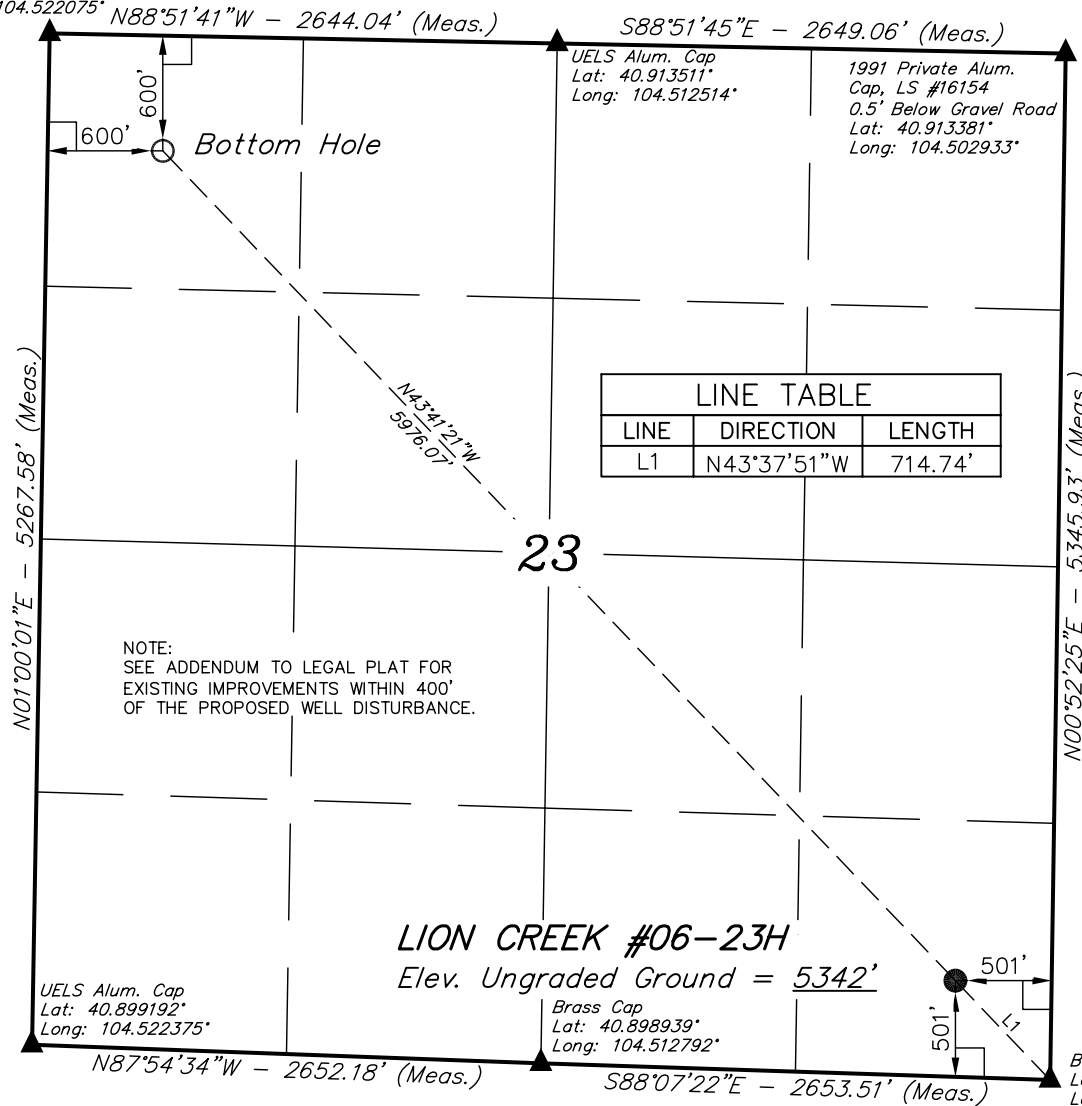
SPOT ELEVATION AT THE NORTHEAST CORNER OF SECTION 1, T11N, R63W, 6th. P.M. TAKEN FROM THE HERFORD, QUADRANGLE, COLORADO, WELD COUNTY, 7.5 MINUTE QUAD (TOPOGRAPHIC MAP) PUBLISHED BY THE UNITED STATES DEPARTMENT OF THE INTERIOR, GEOLOGICAL SURVEY. SAID ELEVATION IS MARKED AS BEING 5352 FEET.

### BASIS OF BEARINGS

BASIS OF BEARINGS IS A G.P.S. OBSERVATION.

### LINE TABLE

| LINE | DIRECTION   | LENGTH  |
|------|-------------|---------|
| L1   | N43°37'51"W | 714.74' |



SCALE

### CERTIFICATE

THIS IS TO CERTIFY THAT THE ABOVE PLAT WAS PREPARED FROM FIELD NOTES OF ACTUAL SURVEYS MADE BY ME OR UNDER MY SUPERVISION AND THAT THE SAME ARE TRUE AND CORRECT TO THE BEST OF MY KNOWLEDGE AND BELIEF.

REGISTERED LAND SURVEYOR  
REGISTRATION NO. 17492  
STATE OF COLORADO

UINTAH ENGINEERING & LAND SURVEYING  
85 SOUTH 200 EAST - VERNAL, UTAH 84078  
(435) 789-1017

PDOP = 1.8

| NAD 83 (TARGET BOTTOM HOLE)            | NAD 83 (SURFACE LOCATION)              |
|--|--|
| LATITUDE = 40°54'43.09" (40.911969)    | LATITUDE = 40°54'00.46" (40.900128)    |
| LONGITUDE = 104°31'11.78" (104.519939) | LONGITUDE = 104°30'17.95" (104.504986) |
| NAD 27 (TARGET BOTTOM HOLE)            | NAD 27 (SURFACE LOCATION)              |
| LATITUDE = 40°54'43.15" (40.911986)    | LATITUDE = 40°54'00.52" (40.900144)    |
| LONGITUDE = 104°31'09.93" (104.519425) | LONGITUDE = 104°30'16.10" (104.504472) |
| STATE PLANE NAD 83 COLORADO NORTH      | STATE PLANE NAD 83 COLORADO NORTH      |
| N: 1576579.20 E: 3270890.16            | N: 1572310.97 E: 3275071.37            |
| STATE PLANE NAD 27 COLORADO NORTH      | STATE PLANE NAD 27 COLORADO NORTH      |
| N: 576577.30 E: 2271039.73             | N: 572309.18 E: 2275220.88             |

### LEGEND:

- └─┘ = 90° SYMBOL
- = PROPOSED WELL HEAD.
- ▲ = SECTION CORNERS LOCATED.

|                         |                             |                        |
|-------------------------|-----------------------------|------------------------|
| SCALE<br>1" = 1000'     | DATE SURVEYED:<br>11-3-10   | DATE DRAWN:<br>11-4-10 |
| PARTY<br>B.B. C.I. J.I. | REFERENCES<br>G.L.O. PLAT   |                        |
| WEATHER<br>WARM         | FILE<br>EOG RESOURCES, INC. |                        |