
XTO ENERGY INC EBUSINESS

Tiffany 32-7 12 #6

La Plata County , Colorado

Cement Production Casing

14-Oct-2010

Job Site Documents

The Road to Excellence Starts with Safety

Sold To #: 353810	Ship To #: 2812660	Quote #:	Sales Order #: 7705095
Customer: XTO ENERGY INC EBUSINESS		Customer Rep:	
Well Name: Tiffany 32-7 12		Well #: #6	API/UWI #:
Field:	City (SAP): IGNACIO	County/Parish: La Plata	State: Colorado
Contractor: AZTEC WELL SERVICE		Rig/Platform Name/Num: AWS 507	
Job Purpose: Cement Production Casing			
Well Type: Development Well		Job Type: Cement Production Casing	
Sales Person: MASON, KYLE	Srvc Supervisor: RICHESIN, ANTHONY		MBU ID Emp #: 412961

Job Personnel

HES Emp Name	Exp Hrs	Emp #	HES Emp Name	Exp Hrs	Emp #	HES Emp Name	Exp Hrs	Emp #
AXT, STEPHEN Gary	6	434802	BEGAY, LYDELL James	6	479804	DOBBS, CHAD A	6	275043
JONES, DAVID Michael	6	409749	LAMBSON, NATHANIEL A	6	343100	RICHESIN, ANTHONY Ray	6	412961

Equipment

HES Unit #	Distance-1 way	HES Unit #	Distance-1 way	HES Unit #	Distance-1 way	HES Unit #	Distance-1 way
10011433C	60 mile	10793626	60 mile	10829467	60 mile	10871245	60 MILE

Job Hours

Date	On Location Hours	Operating Hours	Date	On Location Hours	Operating Hours	Date	On Location Hours	Operating Hours
10/14/10	6	2						

TOTAL	Total is the sum of each column separately							
--------------	--	--	--	--	--	--	--	--

Job

Formation Name					Job Times			
Formation Depth (MD)	Top	Bottom			Called Out	Date	Time	Time Zone
Form Type			BHST		On Location	14 - Oct - 2010	18:00	MST
Job depth MD	3317. ft		Job Depth TVD	3317. ft	Job Started	14 - Oct - 2010	21:25	MST
Water Depth			Wk Ht Above Floor	3. ft	Job Completed	14 - Oct - 2010	22:23	MST
Perforation Depth (MD)	From	To			Departed Loc	14 - Oct - 2010	23:45	MST

Well Data

Description	New / Used	Max pressure psig	Size in	ID in	Weight lbm/ft	Thread	Grade	Top MD ft	Bottom MD ft	Top TVD ft	Bottom TVD ft
7 7/8" Open Hole				7.875				500.	3296.		
5 1/2" Production Casing	Unknown		5.5	4.95	15.5		J-55	.	3296.	.	
8 5/8" Surface Casing	Unknown		8.625	8.097	24.		J-55	.	500.		

Sales/Rental/3rd Party (HES)

Description	Qty	Qty uom	Depth	Supplier
PLUG,CMTG,TOP,5 1/2,HWE,4.38 MIN/5.09 MA	1	EA		
SUGAR, GRANULATED, IMPERIAL	150	LB		

Tools and Accessories

Type	Size	Qty	Make	Depth	Type	Size	Qty	Make	Depth	Type	Size	Qty	Make
Guide Shoe					Packer					Top Plug	5.5	1	HES
Float Shoe					Bridge Plug					Bottom Plug			
Float Collar					Retainer					SSR plug set			
Insert Float										Plug Container			
Stage Tool										Centralizers			

Miscellaneous Materials

Gelling Agt	Conc	Surfactant	Conc	Acid Type	Qty	Conc	%
Treatment Fld	Conc	Inhibitor	Conc	Sand Type	Size		Qty

Fluid Data										
Stage/Plug #: 1										
Fluid #	Stage Type	Fluid Name	Qty	Qty uom	Mixing Density lbm/gal	Yield ft ³ /sk	Mix Fluid Gal/sk	Rate bbl/min	Total Mix Fluid Gal/sk	
1	Spacer		10.00	bbl	8.33	.0	.0	.0		
2	MUD FLUSH	MUD FLUSH - ZI - SBM (13383)	20.00	bbl	8.4	.0	.0	.0		
3	Spacer		5.00	bbl	8.33	.0	.0	.0		
4	LEAD CEMENT	PRB-2 - SBM (321500)	260.0	sacks	12.3	2.36	12.95		12.95	
	5 lbm	GILSONITE, BULK (100003700)								
	0.125 lbm	POLY-E-FLAKE (101216940)								
	0.3 %	FE-2 (100001615)								
	0.3 %	D-AIR 3000 (101007446)								
	12.95 Gal	FRESH WATER								
5	Tail Cement	PRB-2 - SBM (321500)	100.0	sacks	13.5	1.81	8.85		8.85	
	5 lbm	GILSONITE, BULK (100003700)								
	0.125 lbm	POLY-E-FLAKE (101216940)								
	0.3 %	FE-2 (100001615)								
	0.3 %	D-AIR 3000 (101007446)								
	8.85 Gal	FRESH WATER								
6	Displacement		77.00	bbl	.			.0		
Calculated Values		Pressures		Volumes						
Displacement	75.8	Shut In: Instant	0	Lost Returns		Cement Slurry	141.4	Pad		
Top Of Cement	SURFACE	5 Min		Cement Returns	15	Actual Displacement	75.5	Treatment		
Frac Gradient		15 Min		Spacers	35	Load and Breakdown		Total Job	252	
Rates										
Circulating	3	Mixing	6	Displacement	6	Avg. Job	5			
Cement Left In Pipe	Amount	46 ft	Reason	Shoe Joint						
Frac Ring # 1 @	ID	Frac ring # 2 @	ID	Frac Ring # 3 @	ID	Frac Ring # 4 @	ID			
The Information Stated Herein Is Correct				Customer Representative Signature						

The Road to Excellence Starts with Safety

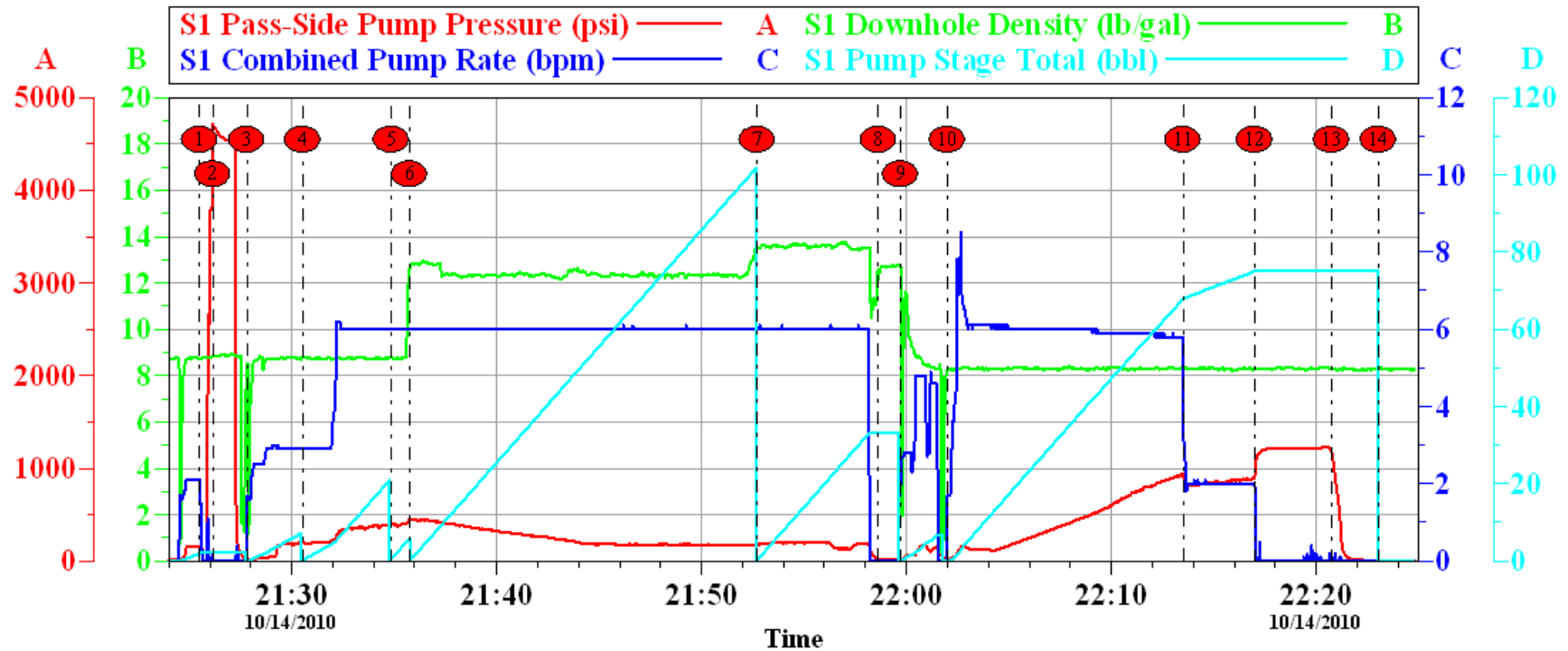
Sold To #: 353810	Ship To #: 2812660	Quote #:	Sales Order #: 7705095
Customer: XTO ENERGY INC EBUSINESS		Customer Rep:	
Well Name: Tiffany 32-7 12		Well #: #6	API/UWI #:
Field:	City (SAP): IGNACIO	County/Parish: La Plata	State: Colorado
Legal Description:			
Lat:		Long:	
Contractor: AZTEC WELL SERVICE		Rig/Platform Name/Num: AWS 507	
Job Purpose: Cement Production Casing			Ticket Amount:
Well Type: Development Well		Job Type: Cement Production Casing	
Sales Person: MASON, KYLE		Srv Supervisor: RICHESIN, ANTHONY MBU ID Emp #: 412961	

Activity Description	Date/Time	Cht #	Rate bbl/min	Volume bbl		Pressure psig		Comments
				Stage	Total	Tubing	Casing	
Call Out	10/14/2010 15:00							GRAND JUNCTION CALLED CREW AT 0930 12/18/09
Safety Meeting - Service Center or other Site	10/14/2010 17:00							SAFETY MEETING INVOLVING THE ENTIRE CMT CREW
Arrive At Loc	10/14/2010 18:00							1- F-450, 1- ELITE PUMP TRUCK, 1- 660 BULK TRUCK 10011433 260 SACKS TYPE 3 2% ECON 6% SLT 3/10 VRSA 2% CSEL 1/8 POLY 5# GIL 3/10 D AIR /// 100 SACKS TAIL SAME AS LEAD
Assessment Of Location Safety Meeting	10/14/2010 18:30							ASSESSMENT OF LOCATION INVOLVING THE ENTIRE CMT CREW
Pre-Rig Up Safety Meeting	10/14/2010 20:55							SAFETY MEETING INVOLVING THE ENTIRE CMT CREW
Rig-Up Equipment	10/14/2010 21:00							
Pre-Job Safety Meeting	10/14/2010 21:20							SAFETY MEETING INVOLVING EVERYONE ON LOCATION
Start Job	10/14/2010 21:25							
Test Lines	10/14/2010 21:26							PSI TEST GOOD 4711 PSI
Pump Spacer 1	10/14/2010 21:27		3	10	10		203.0	10 BBL FRESH WATER SPACER
Pump Spacer 1	10/14/2010 21:30		6	20	20		396.0	20 BBL MUD FLUSH

Activity Description	Date/Time	Cht #	Rate bbl/min	Volume bbl		Pressure psig		Comments
				Stage	Total	Tubing	Casing	
Pump Spacer 1	10/14/2010 21:34		6	5	5		449.0	5 BBL FRESH WATER
Pump Lead Cement	10/14/2010 21:35		6	109	109		452.0	260 SACKS = @12.3# YIELD 2.36 GAL PER SACK 12.95 = 109.2 BBL
Pump Tail Cement	10/14/2010 21:52		6	32	32		203.0	100 SACKS = @ 13.5# YIELD 1.81 GAL PER SACK 8.85 = 32.2 BBL
Drop Top Plug	10/14/2010 21:58							PLUG LEFT THE PLUG CONTAINER
Clean Lines	10/14/2010 21:59							SHUTDOWN AND WASH PUMPS AND LINES BEFORE DISPLACEMENT
Pump Displacement	10/14/2010 22:02		6	65	65		693.0	FRESH WATER DISPLACEMENT CACULATED 75.8 BBL FRESH WATER
Slow Rate	10/14/2010 22:13		2	10	10		854.0	SLOW RATE 2 BBL MIN THE LAST 10 BBLS OF DISPLACEMENT TO LAND THE PLUG
Bump Plug	10/14/2010 22:17		2	75	75		1223.0	PLUG LANDED CACULATED 734.6 PSI TOOK 500 PSI OVER
Check Floats	10/14/2010 22:20							FLOATS HELD .5 BBL BACK TO TRUCK
End Job	10/14/2010 22:23							GOOD CIRCULATION THROUGHOUT THE ENTIRE CMT JOB, NO PIPE MOVEMENT,//// 15 BBL GOOD CEMENT BACK TO PIT//
Comment	10/14/2010 22:24							THANK YOU FOR USING HALLIBURTON, ANTHONY RICHESIN AND CREW
Pre-Rig Down Safety Meeting	10/14/2010 23:00							SAFETY MEETING INVOLVING THE ENTIRE CMT CREW
Rig-Down Equipment	10/14/2010 23:30							
Safety Meeting - Departing Location	10/14/2010 23:45							SAFETY MEETING INVOLVING THE ENTIRE CMT CREW

XTO

TIFFANY 32-7 12 WELL# 6



Local Event Log					
Maximum		SPPP	Maximum		SPPP
① START JOB	21:25:30	4711	② TEST LINES	21:26:09	4711
④ MUD FLUSH	21:30:32	396.5	⑤ WATER	21:34:52	449.0
⑦ TAIL CEMENT	21:52:43	203.0	⑧ DROP PLUG	21:58:38	26.00
⑩ DISPLACEMENT	22:02:00	939.0	⑪ SLOW RATE	22:13:30	934.0
⑬ CHECK FLOATS	22:20:45	1178	⑭ END JOB	22:23:02	11.00
			③ WATER	21:27:48	203.0
			⑥ LEAD CEMENT	21:35:45	452.0
			⑨ WASH LINES	21:59:43	176.0
			⑫ BUMP PLUG	22:17:00	1223

Customer: XTO
Well Description: TIFFANY 32-7 12 WELL# 6
Customer Rep: DENNIS ELROD

Job Date: 14-Oct-2010
Job type: PRODUCTION
Service Supervisor: ANTHONY RICHESIN

Sales Order #: 7705095
ADC Used: YES
Operator/ Pump: NATE LAMBSON

OptiCem v6.4.0
14-Oct-10 22:32