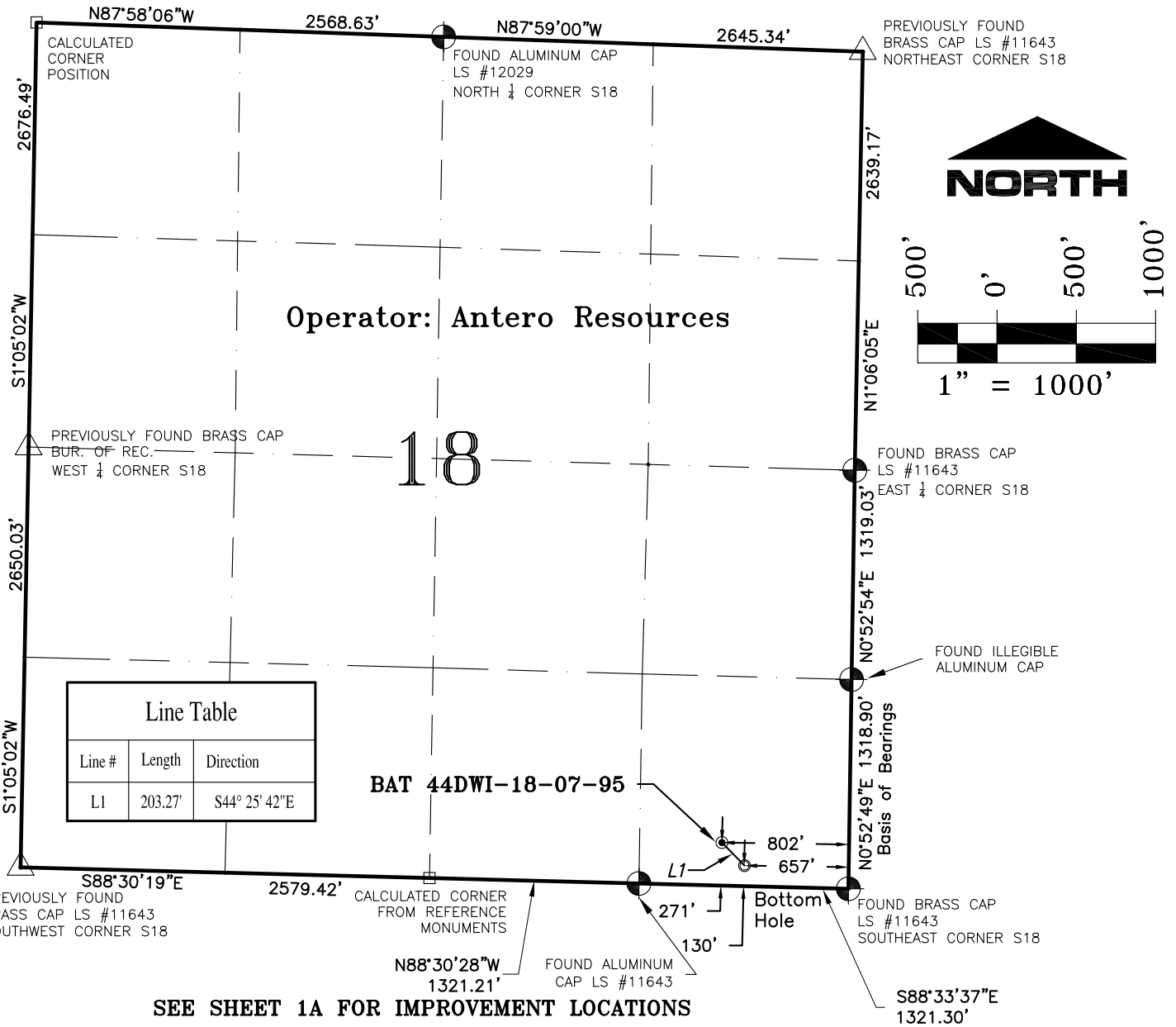
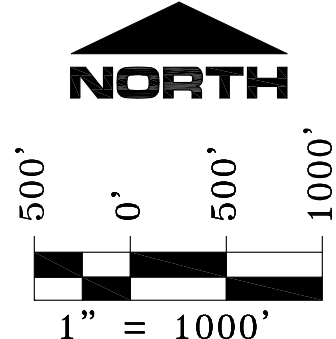


# SECTION 18, T7S, R95W, 6th P.M.



Line Table		
Line #	Length	Direction
L1	203.27'	S44° 25' 42\"E



- NOTES:**
1. GEODETIC POSITIONS ARE SHOWN IN DECIMAL DEGREES.
  2. UNITS OF LINEAR MEASUREMENT: U.S. SURVEY FOOT
  3. ELEVATIONS ARE BASED ON GPS OBSERVATIONS USING GEOID 03, NAVD88.
  4. ALL SURFACE (SHL) AND BOTTOM (BHL) HOLE LOCATIONS ARE MEASURED AT 90° ANGLES FROM SECTION LINES.
  5. BASIS OF BEARING: N00°52'49\"E BETWEEN FOUND MONUMENTS AS SHOWN HEREON.
  6. EXISTING GROUND ELEVATION: 5441'. PROPOSED PAD ELEVATION: 5441.2'.
  7. GPS OPERATOR: KYLE TESKY OBSERVED AN AVERAGE PDOP OF ≤ 3.0 FOR ALL SURVEY MEASUREMENTS DEPICTED ON THIS AND SUBSEQUENT SHEETS. ALL GPS OBSERVATIONS ARE IN COMPLIANCE WITH COGCC RULE NO. 215
  8. SURFACE USE: AGRICULTURAL LANDS
  9. USGS QUAD MAP: PARACHUTE

**SURVEYORS STATEMENT:**  
 I, ELWOOD BARRY GILES, BEING A REGISTERED LAND SURVEYOR IN THE STATE OF COLORADO, DO HERBY CERTIFY THAT THIS PLAT REPRESENTS A SURVEY PERFORMED BY ME OR UNDER MY DIRECT SUPERVISION SEPTEMBER 17, 2010 AND IS TRUE TO THE BEST OF MY KNOWLEDGE AND BELIEF.

*Elwood Barry Giles* 15 OCTOBER, 2010

ELWOOD BARRY GILES  
 COLORADO LS 38150

WELL No.	SECTION LINES TIES		NAD 83		NAD 27	
	FOOTAGES	FOOTAGES	LATITUDE	LONGITUDE	LATITUDE	LONGITUDE
BAT 44DWI-18-07-95						
SURFACE HOLE	271' FSL	802' FEL	39.431170°	108.033167°	39.431191°	108.032537°
BOTTOM HOLE	130' FSL	657' FEL	39.430782°	108.032649°	39.430804°	108.032020°

	<b>SGM INC.</b> 118 W. 6th Street, Suite 200 Glenwood Springs, Colorado 81601 (970) 945-1004 (FAX 945-5948) Meeker, Colorado (970) 878-5180	Scale: 1"=1000' Sheet 1 of 11	Well Location Plat for Antero Resources Well BAT 44DWI-18-07-95 SE 1/4 SE 1/4 Sect. 18, T. 7 S., R. 95 W., 6th P.M., Garfield County, CO
	ANTERO RESOURCES	BAT 44DWI-18-07-95	Job# 2006-479.026