



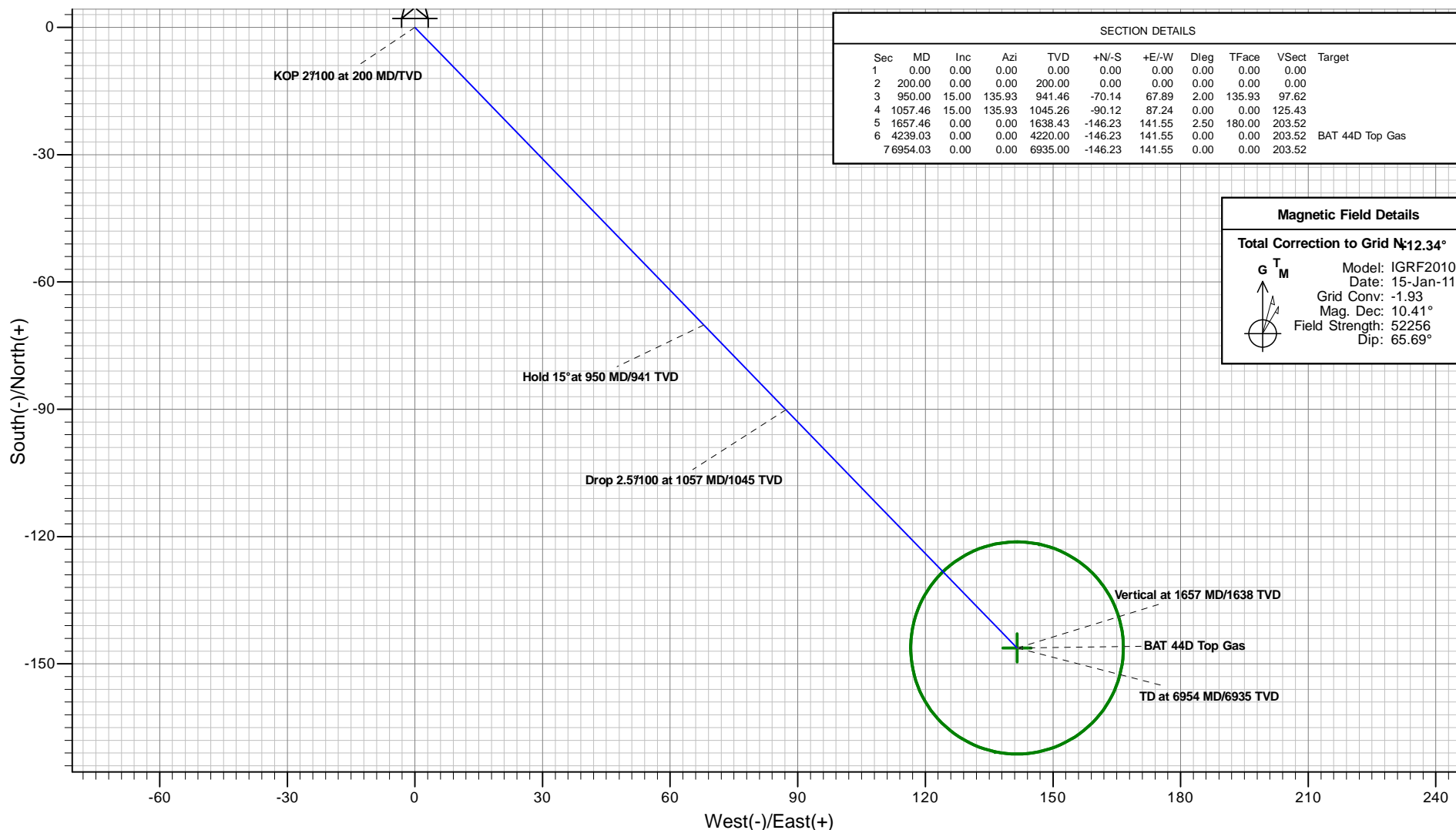
# Antero Resources

## BAT 44DWI-18-07-95 (111284)



### PLAN VIEW

Project: Monument Ridge  
 Site: Monument Ridge Pad  
 Well: BAT 44DWI-18-07-95 (111284)  
 Wellbore: BAT 44DWI  
 Design: BAT 44DWI P01



SECTION DETAILS										
Sec	MD	Inc	Azi	TVD	+N/-S	+E/-W	Dleg	TFace	Vsect	Target
1	0.00	0.00	0.00	0.00	0.00	0.00	0.00	0.00	0.00	
2	200.00	0.00	0.00	200.00	0.00	0.00	0.00	0.00	0.00	
3	950.00	15.00	135.93	941.46	-70.14	67.89	2.00	135.93	97.62	
4	1057.46	15.00	135.93	1045.26	-90.12	87.24	0.00	0.00	125.43	
5	1657.46	0.00	0.00	1638.43	-146.23	141.55	2.50	180.00	203.52	
6	4239.03	0.00	0.00	4220.00	-146.23	141.55	0.00	0.00	203.52	BAT 44D Top Gas
7	6954.03	0.00	0.00	6935.00	-146.23	141.55	0.00	0.00	203.52	

**Magnetic Field Details**

**Total Correction to Grid N: 12.34°**

Model: IGRF2010  
 Date: 15-Jan-11  
 Grid Conv: -1.93  
 Mag. Dec: 10.41°  
 Field Strength: 52256  
 Dip: 65.69°

Plan: BAT 44DWI P01  
 Created By: ARK Directional Services  
 Date: 12:05, October 18 2010

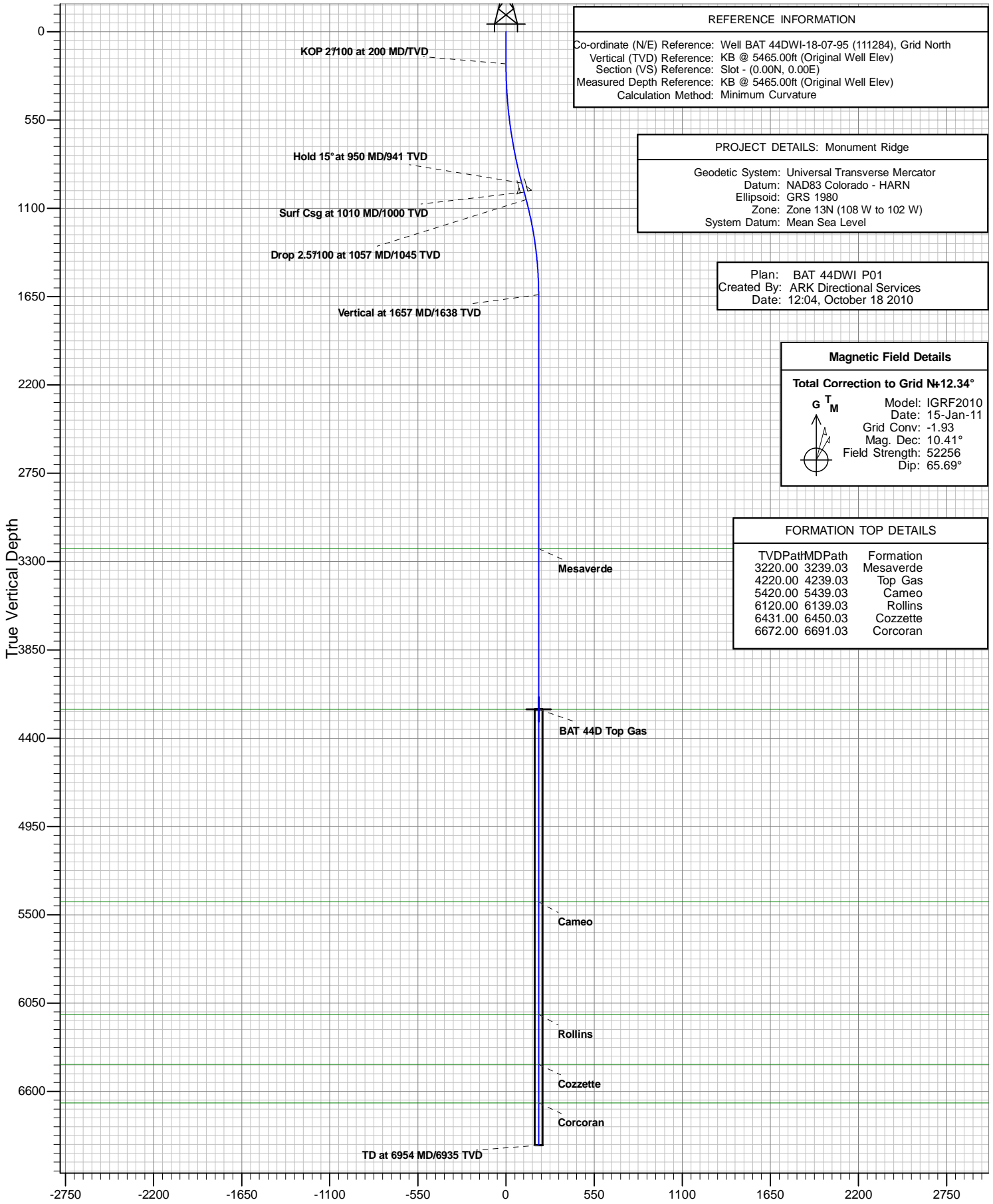
**PROJECT DETAILS: Monument Ridge**

Geodetic System: Universal Transverse Mercator  
 Datum: NAD83 Colorado - HARN  
 Ellipsoid: GRS 1980  
 Zone: Zone 13N (108 W to 102 W)  
 System Datum: Mean Sea Level

**REFERENCE INFORMATION**

Co-ordinate (N/E) Reference: Well BAT 44DWI-18-07-95 (111284), Grid North  
 Vertical (TVD) Reference: KB @ 5465.00ft (Original Well Elev)  
 Section (VS) Reference: Slot - (0.00N, 0.00E)  
 Measured Depth Reference: KB @ 5465.00ft (Original Well Elev)  
 Calculation Method: Minimum Curvature

## VERTICAL SECTION VIEW



REFERENCE INFORMATION
Co-ordinate (N/E) Reference: Well BAT 44DWI-18-07-95 (111284), Grid North
Vertical (TVD) Reference: KB @ 5465.00ft (Original Well Elev)
Section (VS) Reference: Slot - (0.00N, 0.00E)
Measured Depth Reference: KB @ 5465.00ft (Original Well Elev)
Calculation Method: Minimum Curvature

PROJECT DETAILS: Monument Ridge
Geodetic System: Universal Transverse Mercator
Datum: NAD83 Colorado - HARN
Ellipsoid: GRS 1980
Zone: Zone 13N (108 W to 102 W)
System Datum: Mean Sea Level

Plan: BAT 44DWI P01
Created By: ARK Directional Services
Date: 12:04, October 18 2010

Magnetic Field Details												
<b>Total Correction to Grid N=12.34°</b>												
<table border="0"> <tr> <td><b>G T M</b></td> <td>Model: IGRF2010</td> </tr> <tr> <td></td> <td>Date: 15-Jan-11</td> </tr> <tr> <td></td> <td>Grid Conv: -1.93</td> </tr> <tr> <td></td> <td>Mag. Dec: 10.41°</td> </tr> <tr> <td></td> <td>Field Strength: 52256</td> </tr> <tr> <td></td> <td>Dip: 65.69°</td> </tr> </table>	<b>G T M</b>	Model: IGRF2010		Date: 15-Jan-11		Grid Conv: -1.93		Mag. Dec: 10.41°		Field Strength: 52256		Dip: 65.69°
<b>G T M</b>	Model: IGRF2010											
	Date: 15-Jan-11											
	Grid Conv: -1.93											
	Mag. Dec: 10.41°											
	Field Strength: 52256											
	Dip: 65.69°											

FORMATION TOP DETAILS	
TVDPathMDPath	Formation
3220.00 3239.03	Mesaverde
4220.00 4239.03	Top Gas
5420.00 5439.03	Cameo
6120.00 6139.03	Rollins
6431.00 6450.03	Cozzette
6672.00 6691.03	Corcoran

Vertical Section at 135.93°

# **Antero Resources**

**Monument Ridge**

**Monument Ridge Pad**

**BAT 44DWI-18-07-95 (111284)**

**BAT 44DWI**

**Plan: BAT 44DWI P01**

## **Standard Planning Report - Geographic**

**18 October, 2010**

# ARK Directional Services

## Planning Report - Geographic

<b>Database:</b>	EDM SERVER DB	<b>Local Co-ordinate Reference:</b>	Well BAT 44DWI-18-07-95 (111284)
<b>Company:</b>	Antero Resources	<b>TVD Reference:</b>	KB @ 5465.00ft (Original Well Elev)
<b>Project:</b>	Monument Ridge	<b>MD Reference:</b>	KB @ 5465.00ft (Original Well Elev)
<b>Site:</b>	Monument Ridge Pad	<b>North Reference:</b>	Grid
<b>Well:</b>	BAT 44DWI-18-07-95 (111284)	<b>Survey Calculation Method:</b>	Minimum Curvature
<b>Wellbore:</b>	BAT 44DWI		
<b>Design:</b>	BAT 44DWI P01		

<b>Project</b>	Monument Ridge		
<b>Map System:</b>	Universal Transverse Mercator	<b>System Datum:</b>	Mean Sea Level
<b>Geo Datum:</b>	NAD83 Colorado - HARN		
<b>Map Zone:</b>	Zone 13N (108 W to 102 W)		

<b>Site</b>	Monument Ridge Pad				
<b>Site Position:</b>		<b>Northing:</b>	14,334,067.020 usft	<b>Latitude:</b>	39.431305000°N
<b>From:</b>	Lat/Long	<b>Easting:</b>	783,868.932 usft	<b>Longitude:</b>	108.033251000°W
<b>Position Uncertainty:</b>	0.00 ft	<b>Slot Radius:</b>	13.20 in	<b>Grid Convergence:</b>	-1.93 °

<b>Well</b>	BAT 44DWI-18-07-95 (111284)					
<b>Well Position</b>	<b>+N/-S</b>	0.00 ft	<b>Northing:</b>	14,334,017.054 usft	<b>Latitude:</b>	39.431170000°N
	<b>+E/-W</b>	0.00 ft	<b>Easting:</b>	783,891.002 usft	<b>Longitude:</b>	108.033167000°W
<b>Position Uncertainty</b>		0.00 ft	<b>Wellhead Elevation:</b>		<b>Ground Level:</b>	5,441.00 ft

<b>Wellbore</b>	BAT 44DWI				
<b>Magnetics</b>	<b>Model Name</b>	<b>Sample Date</b>	<b>Declination (°)</b>	<b>Dip Angle (°)</b>	<b>Field Strength (nT)</b>
	IGRF2010	2011/01/15	10.41	65.69	52,256

<b>Design</b>	BAT 44DWI P01				
<b>Audit Notes:</b>					
<b>Version:</b>	<b>Phase:</b>	PROTOTYPE	<b>Tie On Depth:</b>	0.00	
<b>Vertical Section:</b>	<b>Depth From (TVD) (ft)</b>	<b>+N/-S (ft)</b>	<b>+E/-W (ft)</b>	<b>Direction (°)</b>	
	4,220.00	0.00	0.00	135.93	

<b>Plan Sections</b>										
Measured Depth (ft)	Inclination (°)	Azimuth (°)	Vertical Depth (ft)	+N/-S (ft)	+E/-W (ft)	Dogleg Rate (°/100ft)	Build Rate (°/100ft)	Turn Rate (°/100ft)	TFO (°)	Target
0.00	0.00	0.00	0.00	0.00	0.00	0.00	0.00	0.00	0.00	
200.00	0.00	0.00	200.00	0.00	0.00	0.00	0.00	0.00	0.00	
950.00	15.00	135.93	941.46	-70.14	67.89	2.00	2.00	0.00	135.93	
1,057.46	15.00	135.93	1,045.26	-90.12	87.24	0.00	0.00	0.00	0.00	
1,657.46	0.00	0.00	1,638.43	-146.23	141.55	2.50	-2.50	0.00	180.00	
4,239.03	0.00	0.00	4,220.00	-146.23	141.55	0.00	0.00	0.00	0.00	BAT 44D Top Gas
6,954.03	0.00	0.00	6,935.00	-146.23	141.55	0.00	0.00	0.00	0.00	

# ARK Directional Services

## Planning Report - Geographic

<b>Database:</b>	EDM SERVER DB	<b>Local Co-ordinate Reference:</b>	Well BAT 44DWI-18-07-95 (111284)
<b>Company:</b>	Antero Resources	<b>TVD Reference:</b>	KB @ 5465.00ft (Original Well Elev)
<b>Project:</b>	Monument Ridge	<b>MD Reference:</b>	KB @ 5465.00ft (Original Well Elev)
<b>Site:</b>	Monument Ridge Pad	<b>North Reference:</b>	Grid
<b>Well:</b>	BAT 44DWI-18-07-95 (111284)	<b>Survey Calculation Method:</b>	Minimum Curvature
<b>Wellbore:</b>	BAT 44DWI		
<b>Design:</b>	BAT 44DWI P01		

Planned Survey										
Measured Depth (ft)	Inclination (°)	Azimuth (°)	Vertical Depth (ft)	+N/-S (ft)	+E/-W (ft)	Map Northing (usft)	Map Easting (usft)	Latitude	Longitude	
0.00	0.00	0.00	0.00	0.00	0.00	14,334,017.054	783,891.002	39.431170000°N	108.033167000°W	
100.00	0.00	0.00	100.00	0.00	0.00	14,334,017.054	783,891.002	39.431170000°N	108.033167000°W	
200.00	0.00	0.00	200.00	0.00	0.00	14,334,017.054	783,891.002	39.431170000°N	108.033167000°W	
<b>KOP 2°/100 at 200 MD/TVD</b>										
300.00	2.00	135.93	299.98	-1.25	1.21	14,334,015.800	783,892.216	39.431166673°N	108.033162559°W	
400.00	4.00	135.93	399.84	-5.01	4.85	14,334,012.039	783,895.856	39.431156696°N	108.033149239°W	
500.00	6.00	135.93	499.45	-11.28	10.91	14,334,005.777	783,901.917	39.431140081°N	108.033127057°W	
600.00	8.00	135.93	598.70	-20.03	19.39	14,333,997.021	783,910.393	39.431116849°N	108.033096040°W	
700.00	10.00	135.93	697.47	-31.27	30.27	14,333,985.782	783,921.272	39.431087027°N	108.033056226°W	
800.00	12.00	135.93	795.62	-44.98	43.54	14,333,972.072	783,934.542	39.431050652°N	108.033007664°W	
900.00	14.00	135.93	893.06	-61.14	59.18	14,333,955.910	783,950.187	39.431007769°N	108.032950412°W	
950.00	15.00	135.93	941.46	-70.14	67.89	14,333,946.915	783,958.894	39.430983902°N	108.032918549°W	
<b>Hold 15° at 950 MD/941 TVD</b>										
1,000.00	15.00	135.93	989.76	-79.44	76.89	14,333,937.616	783,967.894	39.430959231°N	108.032885612°W	
1,010.00	15.00	135.93	999.42	-81.30	78.69	14,333,935.756	783,969.694	39.430954297°N	108.032879024°W	
<b>Surf Csg at 1010 MD/1000 TVD</b>										
1,057.46	15.00	135.93	1,045.26	-90.12	87.24	14,333,926.930	783,978.237	39.430930879°N	108.032847760°W	
<b>Drop 2.5°/100 at 1057 MD/1045 TVD</b>										
1,100.00	13.94	135.93	1,086.45	-97.76	94.63	14,333,919.294	783,985.629	39.430910617°N	108.032820709°W	
1,200.00	11.44	135.93	1,184.00	-113.54	109.90	14,333,903.515	784,000.902	39.430868752°N	108.032764817°W	
1,300.00	8.94	135.93	1,282.42	-126.25	122.20	14,333,890.809	784,013.201	39.430835038°N	108.032719808°W	
1,400.00	6.44	135.93	1,381.51	-135.86	131.50	14,333,881.199	784,022.503	39.430809541°N	108.032685768°W	
1,500.00	3.94	135.93	1,481.09	-142.35	137.79	14,333,874.704	784,028.790	39.430792308°N	108.032662762°W	
1,600.00	1.44	135.93	1,580.98	-145.72	141.05	14,333,871.337	784,032.049	39.430783373°N	108.032650834°W	
1,657.46	0.00	0.00	1,638.43	-146.23	141.55	14,333,870.819	784,032.550	39.430782000°N	108.032649000°W	
<b>Vertical at 1657 MD/1638 TVD</b>										
1,700.00	0.00	0.00	1,680.97	-146.23	141.55	14,333,870.819	784,032.550	39.430782000°N	108.032649000°W	
1,800.00	0.00	0.00	1,780.97	-146.23	141.55	14,333,870.819	784,032.550	39.430782000°N	108.032649000°W	
1,900.00	0.00	0.00	1,880.97	-146.23	141.55	14,333,870.819	784,032.550	39.430782000°N	108.032649000°W	
2,000.00	0.00	0.00	1,980.97	-146.23	141.55	14,333,870.819	784,032.550	39.430782000°N	108.032649000°W	
2,100.00	0.00	0.00	2,080.97	-146.23	141.55	14,333,870.819	784,032.550	39.430782000°N	108.032649000°W	
2,200.00	0.00	0.00	2,180.97	-146.23	141.55	14,333,870.819	784,032.550	39.430782000°N	108.032649000°W	
2,300.00	0.00	0.00	2,280.97	-146.23	141.55	14,333,870.819	784,032.550	39.430782000°N	108.032649000°W	
2,400.00	0.00	0.00	2,380.97	-146.23	141.55	14,333,870.819	784,032.550	39.430782000°N	108.032649000°W	
2,500.00	0.00	0.00	2,480.97	-146.23	141.55	14,333,870.819	784,032.550	39.430782000°N	108.032649000°W	
2,600.00	0.00	0.00	2,580.97	-146.23	141.55	14,333,870.819	784,032.550	39.430782000°N	108.032649000°W	
2,700.00	0.00	0.00	2,680.97	-146.23	141.55	14,333,870.819	784,032.550	39.430782000°N	108.032649000°W	
2,800.00	0.00	0.00	2,780.97	-146.23	141.55	14,333,870.819	784,032.550	39.430782000°N	108.032649000°W	
2,900.00	0.00	0.00	2,880.97	-146.23	141.55	14,333,870.819	784,032.550	39.430782000°N	108.032649000°W	
3,000.00	0.00	0.00	2,980.97	-146.23	141.55	14,333,870.819	784,032.550	39.430782000°N	108.032649000°W	
3,100.00	0.00	0.00	3,080.97	-146.23	141.55	14,333,870.819	784,032.550	39.430782000°N	108.032649000°W	
3,200.00	0.00	0.00	3,180.97	-146.23	141.55	14,333,870.819	784,032.550	39.430782000°N	108.032649000°W	
3,239.03	0.00	0.00	3,220.00	-146.23	141.55	14,333,870.819	784,032.550	39.430782000°N	108.032649000°W	
<b>Mesaverde</b>										
3,300.00	0.00	0.00	3,280.97	-146.23	141.55	14,333,870.819	784,032.550	39.430782000°N	108.032649000°W	
3,400.00	0.00	0.00	3,380.97	-146.23	141.55	14,333,870.819	784,032.550	39.430782000°N	108.032649000°W	
3,500.00	0.00	0.00	3,480.97	-146.23	141.55	14,333,870.819	784,032.550	39.430782000°N	108.032649000°W	
3,600.00	0.00	0.00	3,580.97	-146.23	141.55	14,333,870.819	784,032.550	39.430782000°N	108.032649000°W	
3,700.00	0.00	0.00	3,680.97	-146.23	141.55	14,333,870.819	784,032.550	39.430782000°N	108.032649000°W	
3,800.00	0.00	0.00	3,780.97	-146.23	141.55	14,333,870.819	784,032.550	39.430782000°N	108.032649000°W	
3,900.00	0.00	0.00	3,880.97	-146.23	141.55	14,333,870.819	784,032.550	39.430782000°N	108.032649000°W	
4,000.00	0.00	0.00	3,980.97	-146.23	141.55	14,333,870.819	784,032.550	39.430782000°N	108.032649000°W	
4,100.00	0.00	0.00	4,080.97	-146.23	141.55	14,333,870.819	784,032.550	39.430782000°N	108.032649000°W	
4,200.00	0.00	0.00	4,180.97	-146.23	141.55	14,333,870.819	784,032.550	39.430782000°N	108.032649000°W	

# ARK Directional Services

## Planning Report - Geographic

<b>Database:</b>	EDM SERVER DB	<b>Local Co-ordinate Reference:</b>	Well BAT 44DWI-18-07-95 (111284)
<b>Company:</b>	Antero Resources	<b>TVD Reference:</b>	KB @ 5465.00ft (Original Well Elev)
<b>Project:</b>	Monument Ridge	<b>MD Reference:</b>	KB @ 5465.00ft (Original Well Elev)
<b>Site:</b>	Monument Ridge Pad	<b>North Reference:</b>	Grid
<b>Well:</b>	BAT 44DWI-18-07-95 (111284)	<b>Survey Calculation Method:</b>	Minimum Curvature
<b>Wellbore:</b>	BAT 44DWI		
<b>Design:</b>	BAT 44DWI P01		

Planned Survey										
Measured Depth (ft)	Inclination (°)	Azimuth (°)	Vertical Depth (ft)	+N/-S (ft)	+E/-W (ft)	Map Northing (usft)	Map Easting (usft)	Latitude	Longitude	
4,239.03	0.00	0.00	4,220.00	-146.23	141.55	14,333,870.819	784,032.550	39.430782000°N	108.032649000°W	
<b>Top Gas</b>										
4,300.00	0.00	0.00	4,280.97	-146.23	141.55	14,333,870.819	784,032.550	39.430782000°N	108.032649000°W	
4,400.00	0.00	0.00	4,380.97	-146.23	141.55	14,333,870.819	784,032.550	39.430782000°N	108.032649000°W	
4,500.00	0.00	0.00	4,480.97	-146.23	141.55	14,333,870.819	784,032.550	39.430782000°N	108.032649000°W	
4,600.00	0.00	0.00	4,580.97	-146.23	141.55	14,333,870.819	784,032.550	39.430782000°N	108.032649000°W	
4,700.00	0.00	0.00	4,680.97	-146.23	141.55	14,333,870.819	784,032.550	39.430782000°N	108.032649000°W	
4,800.00	0.00	0.00	4,780.97	-146.23	141.55	14,333,870.819	784,032.550	39.430782000°N	108.032649000°W	
4,900.00	0.00	0.00	4,880.97	-146.23	141.55	14,333,870.819	784,032.550	39.430782000°N	108.032649000°W	
5,000.00	0.00	0.00	4,980.97	-146.23	141.55	14,333,870.819	784,032.550	39.430782000°N	108.032649000°W	
5,100.00	0.00	0.00	5,080.97	-146.23	141.55	14,333,870.819	784,032.550	39.430782000°N	108.032649000°W	
5,200.00	0.00	0.00	5,180.97	-146.23	141.55	14,333,870.819	784,032.550	39.430782000°N	108.032649000°W	
5,300.00	0.00	0.00	5,280.97	-146.23	141.55	14,333,870.819	784,032.550	39.430782000°N	108.032649000°W	
5,400.00	0.00	0.00	5,380.97	-146.23	141.55	14,333,870.819	784,032.550	39.430782000°N	108.032649000°W	
5,439.03	0.00	0.00	5,420.00	-146.23	141.55	14,333,870.819	784,032.550	39.430782000°N	108.032649000°W	
<b>Cameo</b>										
5,500.00	0.00	0.00	5,480.97	-146.23	141.55	14,333,870.819	784,032.550	39.430782000°N	108.032649000°W	
5,600.00	0.00	0.00	5,580.97	-146.23	141.55	14,333,870.819	784,032.550	39.430782000°N	108.032649000°W	
5,700.00	0.00	0.00	5,680.97	-146.23	141.55	14,333,870.819	784,032.550	39.430782000°N	108.032649000°W	
5,800.00	0.00	0.00	5,780.97	-146.23	141.55	14,333,870.819	784,032.550	39.430782000°N	108.032649000°W	
5,900.00	0.00	0.00	5,880.97	-146.23	141.55	14,333,870.819	784,032.550	39.430782000°N	108.032649000°W	
6,000.00	0.00	0.00	5,980.97	-146.23	141.55	14,333,870.819	784,032.550	39.430782000°N	108.032649000°W	
6,100.00	0.00	0.00	6,080.97	-146.23	141.55	14,333,870.819	784,032.550	39.430782000°N	108.032649000°W	
6,139.03	0.00	0.00	6,120.00	-146.23	141.55	14,333,870.819	784,032.550	39.430782000°N	108.032649000°W	
<b>Rollins</b>										
6,200.00	0.00	0.00	6,180.97	-146.23	141.55	14,333,870.819	784,032.550	39.430782000°N	108.032649000°W	
6,300.00	0.00	0.00	6,280.97	-146.23	141.55	14,333,870.819	784,032.550	39.430782000°N	108.032649000°W	
6,400.00	0.00	0.00	6,380.97	-146.23	141.55	14,333,870.819	784,032.550	39.430782000°N	108.032649000°W	
6,450.03	0.00	0.00	6,431.00	-146.23	141.55	14,333,870.819	784,032.550	39.430782000°N	108.032649000°W	
<b>Cozzette</b>										
6,500.00	0.00	0.00	6,480.97	-146.23	141.55	14,333,870.819	784,032.550	39.430782000°N	108.032649000°W	
6,600.00	0.00	0.00	6,580.97	-146.23	141.55	14,333,870.819	784,032.550	39.430782000°N	108.032649000°W	
6,691.03	0.00	0.00	6,672.00	-146.23	141.55	14,333,870.819	784,032.550	39.430782000°N	108.032649000°W	
<b>Corcoran</b>										
6,700.00	0.00	0.00	6,680.97	-146.23	141.55	14,333,870.819	784,032.550	39.430782000°N	108.032649000°W	
6,800.00	0.00	0.00	6,780.97	-146.23	141.55	14,333,870.819	784,032.550	39.430782000°N	108.032649000°W	
6,900.00	0.00	0.00	6,880.97	-146.23	141.55	14,333,870.819	784,032.550	39.430782000°N	108.032649000°W	
6,954.03	0.00	0.00	6,935.00	-146.23	141.55	14,333,870.819	784,032.550	39.430782000°N	108.032649000°W	
<b>TD at 6954 MD/6935 TVD</b>										

Design Targets										
Target Name	Dip Angle (°)	Dip Dir. (°)	TVD (ft)	+N/-S (ft)	+E/-W (ft)	Northing (usft)	Easting (usft)	Latitude	Longitude	
BAT 44D Top Gas - hit/miss target - Shape	0.00	360.00	4,220.00	-146.23	141.55	14,333,870.819	784,032.550	39.430782000°N	108.032649000°W	
- plan hits target center										
- Circle (radius 25.00)										

# ARK Directional Services

## Planning Report - Geographic

<b>Database:</b>	EDM SERVER DB	<b>Local Co-ordinate Reference:</b>	Well BAT 44DWI-18-07-95 (111284)
<b>Company:</b>	Antero Resources	<b>TVD Reference:</b>	KB @ 5465.00ft (Original Well Elev)
<b>Project:</b>	Monument Ridge	<b>MD Reference:</b>	KB @ 5465.00ft (Original Well Elev)
<b>Site:</b>	Monument Ridge Pad	<b>North Reference:</b>	Grid
<b>Well:</b>	BAT 44DWI-18-07-95 (111284)	<b>Survey Calculation Method:</b>	Minimum Curvature
<b>Wellbore:</b>	BAT 44DWI		
<b>Design:</b>	BAT 44DWI P01		

Casing Points					
Measured Depth (ft)	Vertical Depth (ft)	Name	Casing Diameter (in)	Hole Diameter (in)	
1,010.00	999.42	Surf Csg at 1010 MD/1000 TVD	5.50	6.00	

Formations					
Measured Depth (ft)	Vertical Depth (ft)	Name	Lithology	Dip (°)	Dip Direction (°)
3,239.03	3,220.00	Mesaverde			
4,239.03	4,220.00	Top Gas			
5,439.03	5,420.00	Cameo			
6,139.03	6,120.00	Rollins			
6,450.03	6,431.00	Cozzette			
6,691.03	6,672.00	Corcoran			

Plan Annotations					
Measured Depth (ft)	Vertical Depth (ft)	Local Coordinates		Comment	
		+N/-S (ft)	+E/-W (ft)		
200.00	200.00	0.00	0.00		KOP 2°/100 at 200 MD/TVD
950.00	941.46	-70.14	67.89		Hold 15° at 950 MD/941 TVD
1,057.46	1,045.26	-90.12	87.24		Drop 2.5°/100 at 1057 MD/1045 TVD
1,657.46	1,638.43	-146.23	141.55		Vertical at 1657 MD/1638 TVD
6,954.03	6,935.00	-146.23	141.55		TD at 6954 MD/6935 TVD