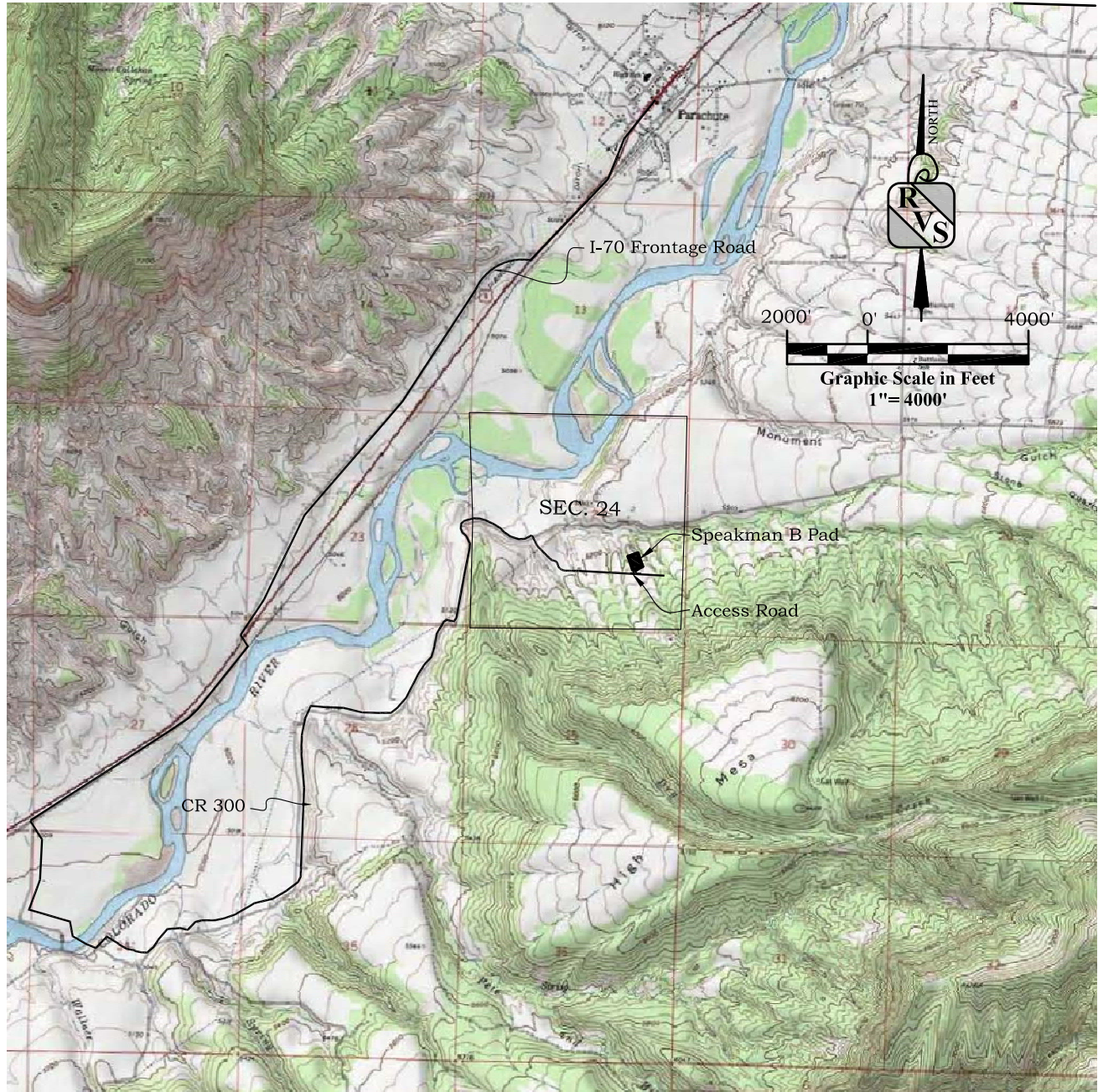


SPEAKMAN B PAD ACCESS AND VICINITY MAP

Section 24, Township 7 South, Range 96 West



ACCESS:

WESTERLY FROM THE TOWN OF PARACHUTE ALONG THE I-70 FRONTAGE ROAD 4.5 MILES TO THE UNA BRIDGE TURNOFF (COUNTY ROAD 300). TURN LEFT ON COUNTY ROAD 300 AND PROCEED IN A SOUTHERLY DIRECTION ACROSS THE UNA BRIDGE THEN NORTH AND EAST 4.69 MILES ALONG COUNTY ROAD 300 TO PAD B ACCESS ROAD. TURN LEFT ON ACCESS ROAD AND PROCEED 0.1 MILES TO THE SPEAKMAN B PAD SITE.



River Valley Survey, Inc.
110 East 3rd. Street, Suite 213
Rifle, Colorado 81650
Ph: 970-379-7846

Project: Speakman B Pad

Field Date: 08-05-10

Date: 09-17-10

Scale: 1"= 4000'

Sheet: 10 of 10

**Well Location Plat
Prepared For Antero Resources**

Situate In:
SE 1/4 Section 24, T7S., R. 96 W. of the
6th P.M., Garfield County, Colorado

