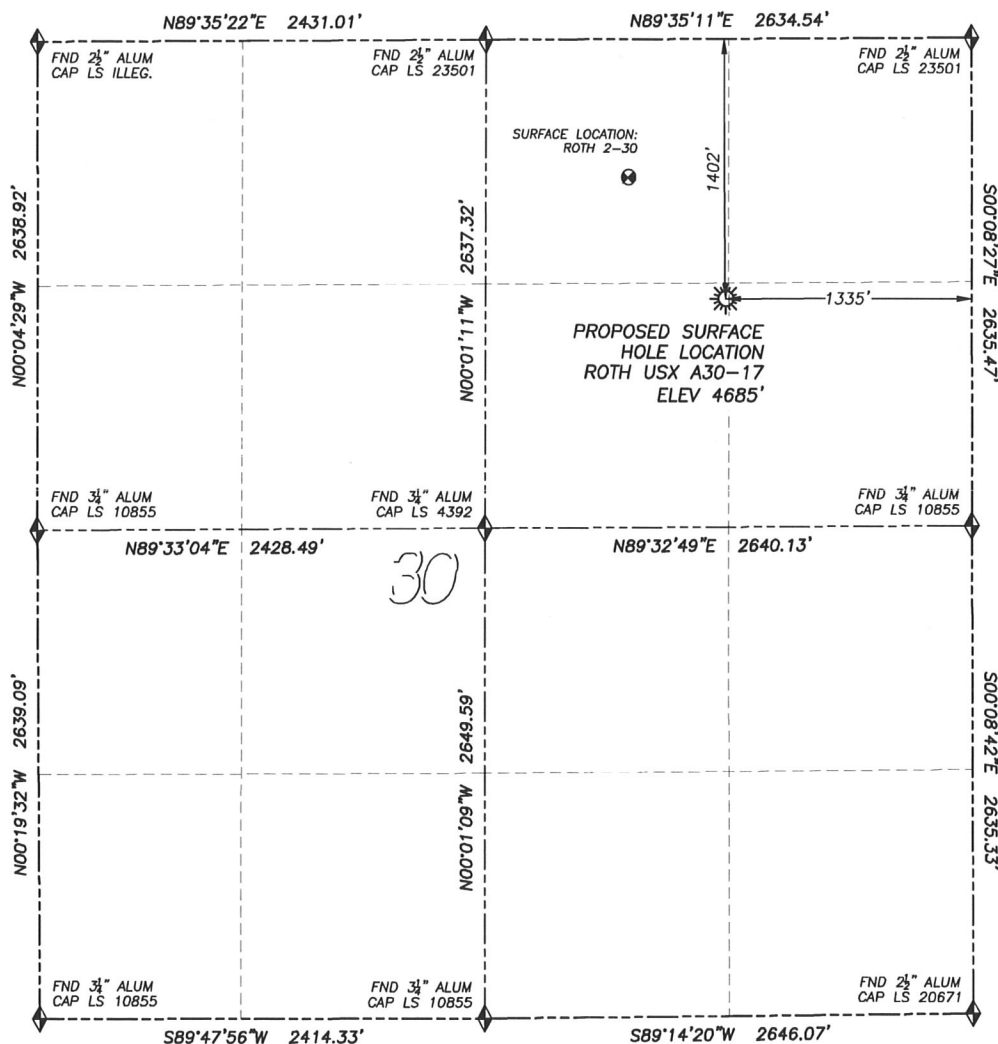


WELL LOCATION CERTIFICATE ROTH USX A30-17

SECTION 30, TOWNSHIP 6 NORTH, RANGE 64 WEST OF THE 6TH PRINCIPAL MERIDIAN



0 500 1000
SCALE: 1" = 1000'

LEGEND

- ◆ FOUND MONUMENT AS DESCRIBED
- ☀ PROPOSED WELL
- ⊙ EXISTING WELL
- BOTTOM HOLE
- ⊗ ABANDONED WELL

NAD 83 LATITUDE AND LONGITUDE

ROTH USX A30-17 SURFACE HOLE:

LATITUDE: N40.46034°

LONGITUDE: W104.58848°

ELEVATION: 4685'

FOOTAGE: 1402' FNL, 1335' FEL

PDOP: 1.9

QTR/QTR: SW4/NE4

PROP LINE: 975' SOUTHEAST

IN ACCORDANCE WITH A REQUEST FROM MIKE RODINE OF NOBLE ENERGY INC., DALEY LAND SURVEYING, INC. HAS DETERMINED THE SURFACE LOCATION OF THE ROTH USX A30-17 WELL TO BE 1402' FNL, 1335' FEL, AS MEASURED AT NINETY (90) DEGREES FROM THE SECTION LINES OF SECTION 30, TOWNSHIP 6 NORTH, RANGE 64 WEST OF THE 6TH PRINCIPAL MERIDIAN, WELD COUNTY, COLORADO.

I HEREBY CERTIFY THAT THIS WELL LOCATION CERTIFICATE WAS PREPARED BY ME OR UNDER MY DIRECT SUPERVISION, THAT THE WORK WAS COMPLETED ON 10/15/2010 FOR AND ON BEHALF OF NOBLE ENERGY, INC., AND THAT THIS MAP DOES NOT REPRESENT A BOUNDARY SURVEY, IT IS NOT A LAND SURVEY PLAT OR AN IMPROVEMENT SURVEY PLAT AND IT IS NOT TO BE RELIED UPON FOR THE ESTABLISHMENT OF FENCE, BUILDING OR OTHER FUTURE IMPROVEMENT LINES.

NOTES:

- 1) BEARINGS FOR THIS MAP ARE ASSUMED AND BASED UPON GPS OBSERVATIONS MADE BETWEEN MONUMENTS LOCATED AT THE NORTHEAST CORNER AND EAST QUARTER CORNER OF SECTION 30, T.6N., R.64W.
- 2) HORIZONTAL DATUM IS NAD83.
- 3) VERTICAL DATUM IS NAVD83. ELEVATIONS ARE DERIVED FROM GPS OBSERVATIONS PROCESSED THROUGH OPUS, UTILIZING THE GEOID03 MODEL.
- 4) SEE LOCATION DRAWING FOR VISIBLE IMPROVEMENTS WITHIN 600' OF PROPOSED SURFACE HOLE LOCATION.
- 5) SURFACE USE: AGRICULTURAL.

NEAREST EXISTING WELL:

ROTH 2-30 SURFACE HOLE

LATITUDE: N40.46213°

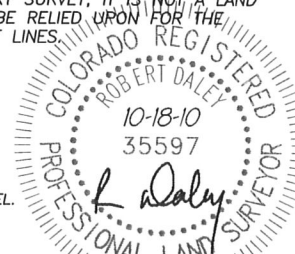
LONGITUDE: W104.59038°

ELEVATION: 4673'

839' NORTHWEST

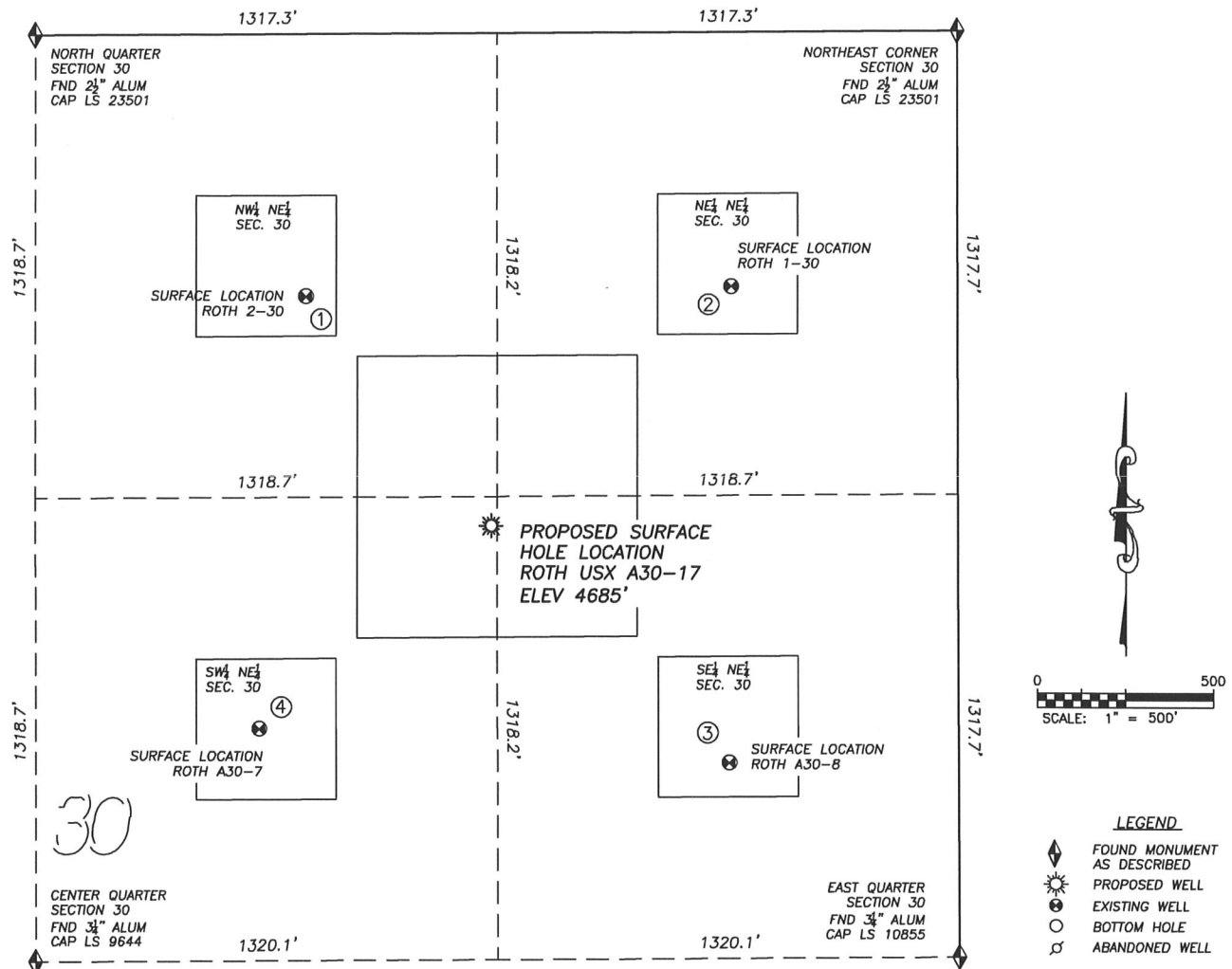
NOTICE: According to Colorado law you MUST commence any legal action based upon any defect in this W.L.C. within three years after you first discover such defect. In no event may any action based upon any such defect in this W.L.C. be commenced more than ten years from the date of the certification shown herein.

FOR AND ON BEHALF OF
DALEY LAND SURVEYING INC.,
Robert Daley, PLS 35597



SITE SKETCH ROTH USX A30-17

SECTION 30, TOWNSHIP 6 NORTH, RANGE 64 WEST OF THE 6TH PRINCIPAL MERIDIAN



①

ROTH 2-30

NW/NE SEC. 30
 748' FNL, 1863' FEL
 839' NW OF PROPOSED
 SURFACE HOLE LOCATION
 LAT. N40.46213'
 LONG. W104.59038'
 EL: 4673'
 PDOP 1.3

②

ROTH 1-30

NE/NE SEC. 30
 724' FNL, 649' FEL
 967' NE OF PROPOSED
 SURFACE HOLE LOCATION
 LAT. N40.46222'
 LONG. W104.58602'
 EL: 4696'
 PDOP 1.4

③

ROTH A30-8

SE/NE SEC. 30
 2080' FNL, 657' FEL
 956' SE OF PROPOSED
 SURFACE HOLE LOCATION
 LAT. N40.45850'
 LONG. W104.58604'
 EL: 4691'
 PDOP 1.4

④

ROTH A30-7

SW/NE SEC. 30
 1977' FNL, 2000' FEL
 881' SW OF PROPOSED
 SURFACE HOLE LOCATION
 LAT. N40.45875'
 LONG. W104.59086'
 EL: 4665'
 PDOP 1.3

NOTES:

- 1) THIS DOES NOT REPRESENT A BOUNDARY SURVEY
- 2) THE LATITUDES AND LONGITUDES SHOWN ARE REFERENCED TO NAD83
- 3) DATUM FOR ELEVATION IS NAVD88. ELEVATIONS ARE DERIVED FROM GPS-RTK OBSERVATIONS PROCESSED THROUGH OPUS, UTILIZING THE GEOID03 MODEL.