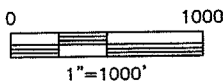
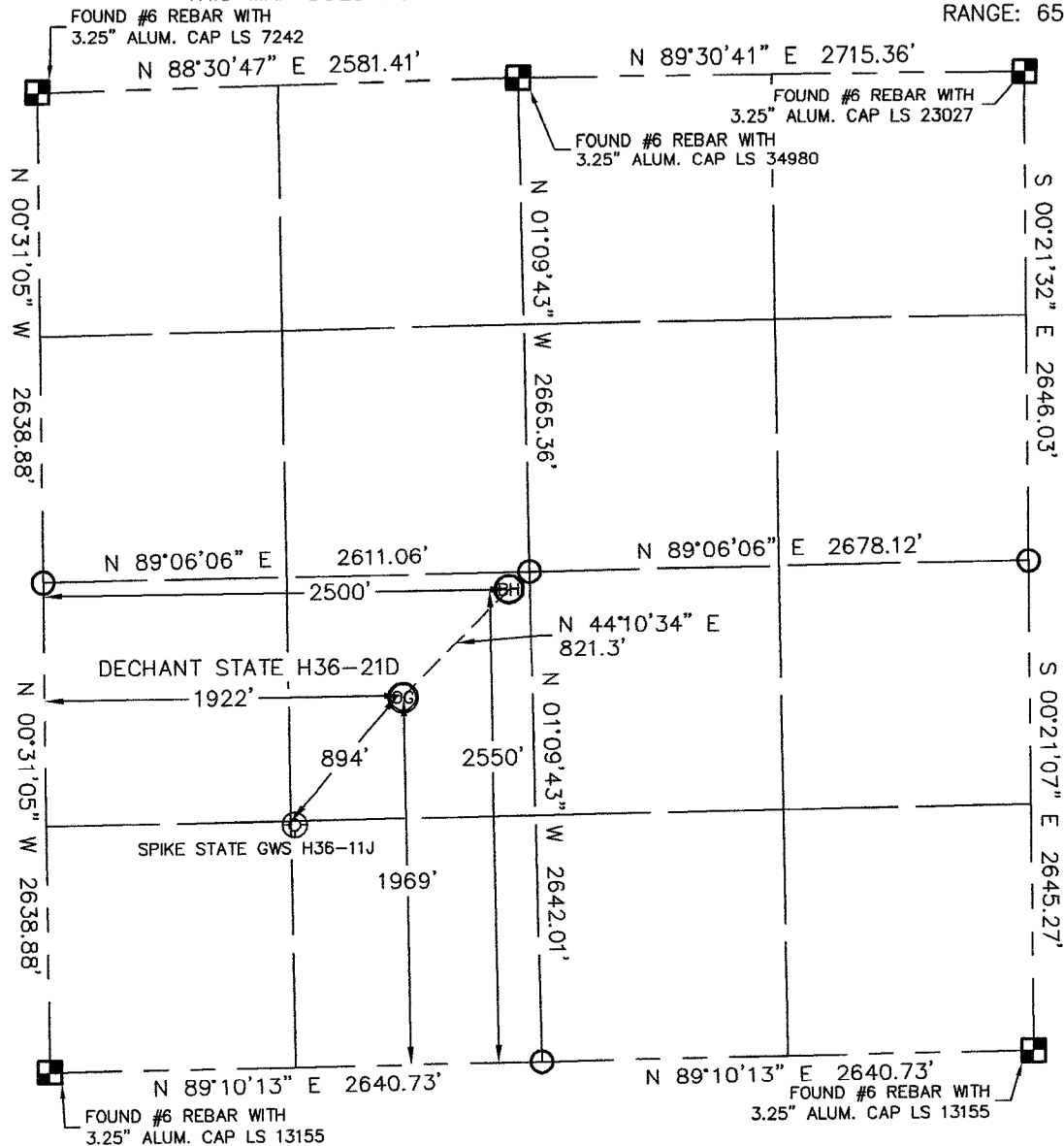


WELL LOCATION CERTIFICATE

SECTION: 36
TOWNSHIP: 3N
RANGE: 65W

THIS MAP DOES NOT REPRESENT A BOUNDARY SURVEY



In accordance with a request from SEAN CASPER with Noble Energy Inc. Lat40°, LLC has determined the surface location of the DECHANT STATE H36-21D to be 1969' from the SOUTH line and 1922' from the WEST line and the bottom hole to be 2550' from the SOUTH line and 2500' from the WEST line as measured at right angles from the section line of Section 36, Township 3 North, Range 65 West of the Sixth Principal Meridian, County of Weld, State of Colorado.

I hereby state that this Well Location Certificate was prepared by me, or under my direct supervision, that the fieldwork was completed on 4-15-10, for and on behalf of Noble Energy Inc. That this is not a Land Survey Plat or an Improvement Survey Plat, and that it is not to be relied upon for establishment of fence, building, or other future improvement lines.

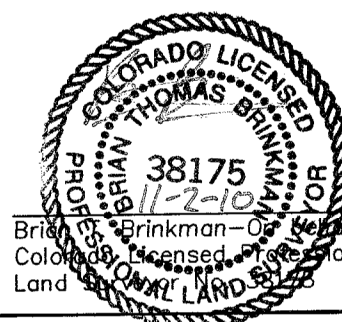
SURFACE LOCATION	BOTTOM HOLE
LATITUDE: 40.17972N	LATITUDE: 40.18132N
LONGITUDE: 104.61490W	LONGITUDE: 104.61283W
PDOP: 2.1	
ELEV: 4819	
1/4, 1/4: NE1/4SW1/4	
NEAREST PROPERTY LINE: 1922' WEST	

- NOTE:
- 1) Bearings shown are Grid Bearings of the Colorado State Plane Coordinate System, North Zone, North American Datum 1983/2007. The lineal dimensions as contained herein are based upon the "U.S. Survey Foot."
 - 2) Ground elevations are based on an observed GPS elevation (NAVD 1988 DATUM).
 - 3) NEAREST EXISTING WELL: SPIKE STATE GWS H36-11J 894'
 - 4) IMPROVEMENTS: See VISIBLE IMPROVEMENTS exhibit for all visible improvements within 400' of disturbed area.
 - 5) SURFACE USE: CROP, DRYLAND (PIVOT REMOVED)

NOTE
According to Colorado law, you must commence any legal action based upon any defect in this W.L.C. within three years after you discover such defect. In no event, may any action based upon any defect in this survey be commenced more than ten years after the date of the certificate shown hereon. (13-80-105 C.R.S.)

LEGEND

- = ALIQUOT MONUMENT AS DESCRIBED
 = CALCULATED POSITION

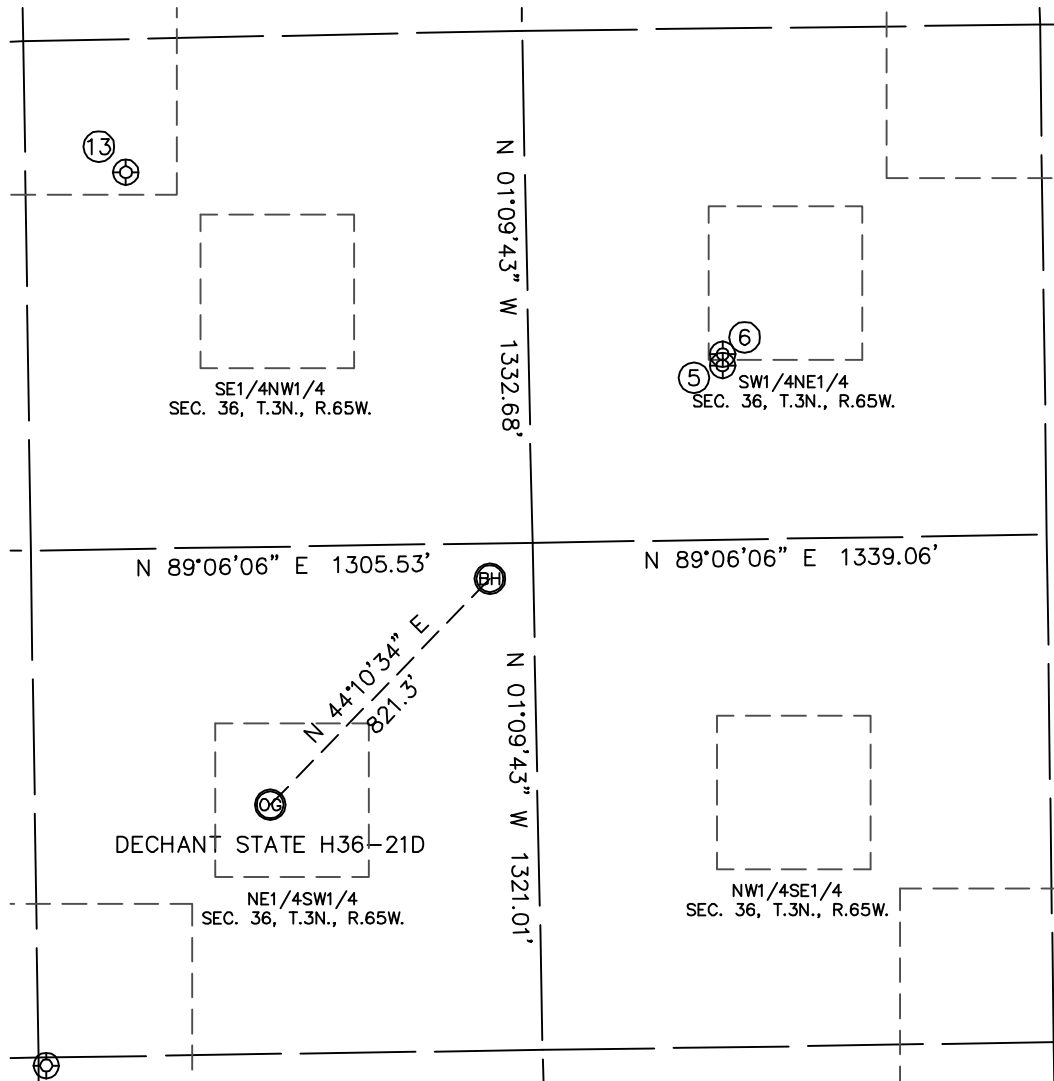


Brian C. Brinkman - On Behalf of Lat40°, LLC
Colorado Licensed Professional
Land Surveyor

PROJECT#: 2010008

SITE SKETCH

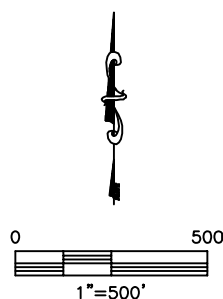
SECTION: 36
TOWNSHIP: 3N
RANGE: 65W



⑤
DECHANT 24-36
SW1/4NE1/4
2208' FNL
2180' FEL
LAT-40.18283°N
LONG-104.61065°W
PDOP: 1.4
ELEV: 4814

⑥
DECHANT 7-36
SW1/4NE1/4
2179' FNL
2180' FEL
LAT-40.18291°N
LONG-104.61064°W
PDOP: 1.2
ELEV: 4814

⑬
SPIKE STATE GWS H36-2J
SE1/4NW1/4
1674' FNL
1562' FWL
LAT-40.18425°N
LONG-104.61619°W
PDOP: 1.5
ELEV: 4815



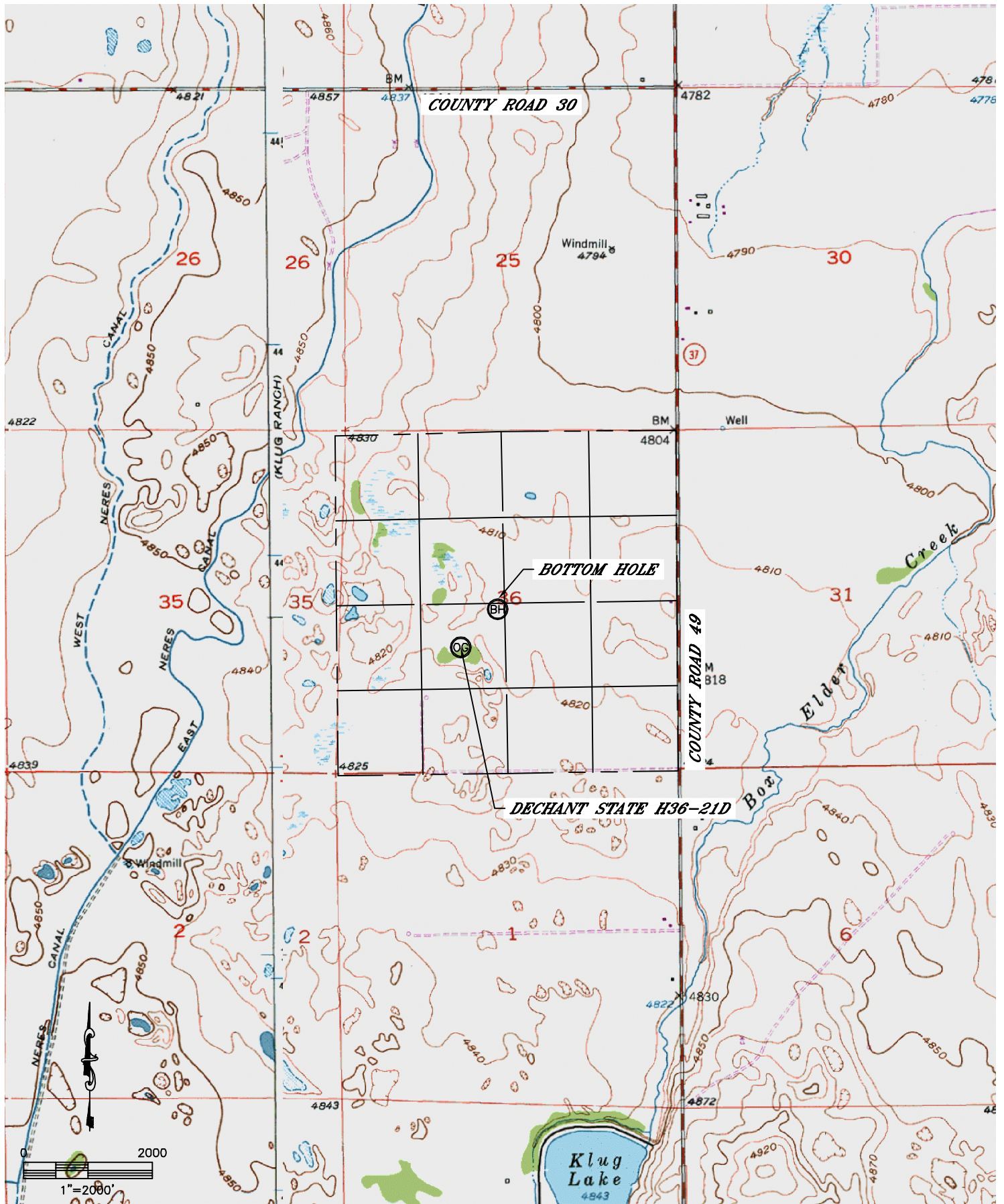
Lat40°, LLC

1635 Foxtrail Drive, Suite 325

Loveland, CO 80538

ACCESS ROAD MAP

SECTION: 36
TOWNSHIP: 3N
RANGE: 65W



VISIBLE IMPROVEMENTS

SECTION: 36
TOWNSHIP: 3N
RANGE: 65W



IMPROVEMENTS:

- A** PROPOSED PIVOT TRACK 52', 208', 364', 520' NORTHWEST
- B** PROPOSED PIVOT TRACK 104', 260', 416', 572' SOUTHEAST
- C** FENCE 549' EAST
- D** FIELD ROAD 558' EAST



HYDROLOGY MAP

SECTION: 36
TOWNSHIP: 3N
RANGE: 65W

