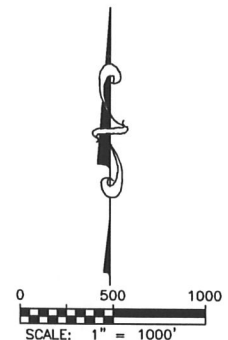
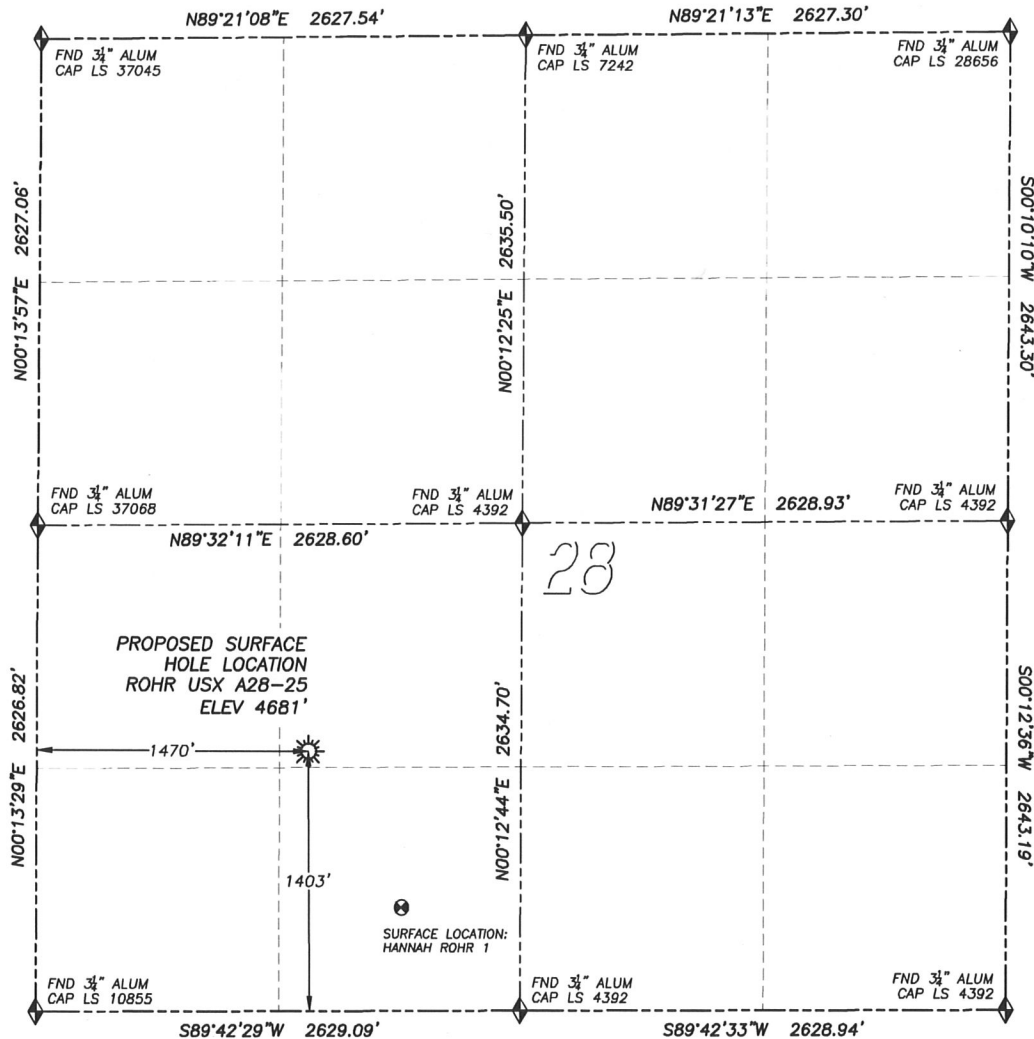


# WELL LOCATION CERTIFICATE

## ROHR USX A28-25

SECTION 28, TOWNSHIP 6 NORTH, RANGE 64 WEST OF THE 6TH PRINCIPAL MERIDIAN

**LEGEND**

- ◆ FOUND MONUMENT AS DESCRIBED
- ☀ PROPOSED WELL
- ⊙ EXISTING WELL
- BOTTOM HOLE
- ⊘ ABANDONED WELL

**NAD 83 LATITUDE AND LONGITUDE****ROHR USX A28-25 SURFACE HOLE:**

LATITUDE: N40.45368°  
 LONGITUDE: W104.55939°  
 ELEVATION: 4681'  
 FOOTAGE: 1403' FSL, 1470' FWL  
 PDOP: 1.9  
 QTR/QTR: NE4/SW4  
 PROP LINE: 156' WEST

**NEAREST EXISTING WELL:**

HANNAH ROHR 1 SURFACE HOLE  
 LATITUDE: N40.45137°  
 LONGITUDE: W104.55757°  
 ELEVATION: 4665'  
 982' SOUTHEAST

IN ACCORDANCE WITH A REQUEST FROM MIKE RODINE OF NOBLE ENERGY INC., DALEY LAND SURVEYING, INC. HAS DETERMINED THE SURFACE LOCATION OF THE ROHR USX A28-25 WELL TO BE 1403' FSL, 1470' FWL, AS MEASURED AT NINETY (90) DEGREES FROM THE SECTION LINES OF SECTION 28, TOWNSHIP 6 NORTH, RANGE 64 WEST OF THE 6TH PRINCIPAL MERIDIAN, WELD COUNTY, COLORADO.

I HEREBY CERTIFY THAT THIS WELL LOCATION CERTIFICATE WAS PREPARED BY ME OR UNDER MY DIRECT SUPERVISION, THAT THE WORK WAS COMPLETED ON 10/15/2010 FOR AND ON BEHALF OF NOBLE ENERGY, INC., AND THAT THIS MAP DOES NOT REPRESENT A BOUNDARY SURVEY, IT IS NOT A LAND SURVEY PLAT OR AN IMPROVEMENT SURVEY PLAT AND IT IS NOT TO BE RELIED UPON FOR THE ESTABLISHMENT OF FENCE, BUILDING OR OTHER FUTURE IMPROVEMENT LINES.

**NOTES:**

- 1) BEARINGS FOR THIS MAP ARE ASSUMED AND BASED UPON GPS OBSERVATIONS MADE BETWEEN MONUMENTS LOCATED AT THE SOUTHWEST CORNER AND WEST QUARTER CORNER OF SECTION 28, T.6N., R.64W.
- 2) HORIZONTAL DATUM IS NAD83.
- 3) VERTICAL DATUM IS NAVD88. ELEVATIONS ARE DERIVED FROM GPS OBSERVATIONS PROCESSED THROUGH OPUS, UTILIZING THE GEOID03 MODEL.
- 4) SEE LOCATION DRAWING FOR VISIBLE IMPROVEMENTS WITHIN 600' OF PROPOSED SURFACE HOLE LOCATION.
- 5) SURFACE USE: AGRICULTURAL.

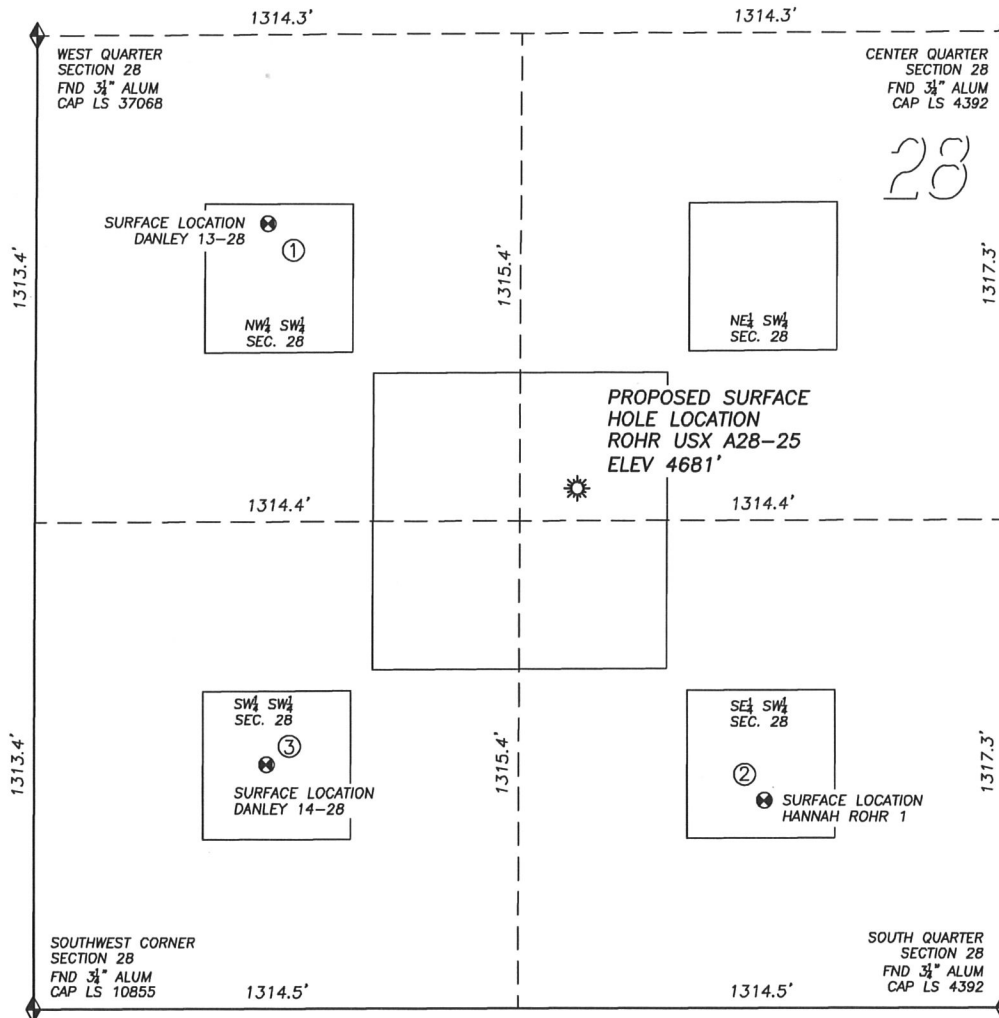
NOTICE: According to Colorado law you MUST commence any legal action based upon any defect in this W.L.C. within three years after you first discover such defect. In no event may any action based upon any such defect in this W.L.C. be commenced more than ten years from the date of the certification shown herein.



FOR AND ON BEHALF OF  
DALEY LAND SURVEYING INC.,  
Robert Daley, PLS 35597

## SITE SKETCH ROHR USX A28-25

SECTION 28, TOWNSHIP 6 NORTH, RANGE 64 WEST OF THE 6TH PRINCIPAL MERIDIAN



0 500  
SCALE: 1" = 500'

## LEGEND

- ◆ FOUND MONUMENT AS DESCRIBED
- ☀ PROPOSED WELL
- ⊗ EXISTING WELL
- BOTTOM HOLE
- ⊘ ABANDONED WELL

①

**DANLEY 13-28**  
NW/SW SEC. 28  
2118' FSL, 627' FWL  
1101' NW OF PROPOSED  
SURFACE HOLE LOCATION  
LAT. N40.45563°  
LONG. W104.56241°  
EL: 4689'  
PDOP 1.5

②

**HANNAH ROHR 1**  
SE/SW SEC. 28  
558' FSL, 1980' FWL  
982' SE OF PROPOSED  
SURFACE HOLE LOCATION  
LAT. N40.45137°  
LONG. W104.55757°  
EL: 4665'  
PDOP 2.2

③

**DANLEY 14-28**  
SW/SW SEC. 28  
658' FSL, 629' FWL  
1129' SW OF PROPOSED  
SURFACE HOLE LOCATION  
LAT. N40.45162°  
LONG. W104.56243°  
EL: 4667'  
PDOP 1.4

## NOTES:

- 1) THIS DOES NOT REPRESENT A BOUNDARY SURVEY
- 2) THE LATITUDES AND LONGITUDES SHOWN ARE REFERENCED TO NAD83
- 3) DATUM FOR ELEVATION IS NAVD88. ELEVATIONS ARE DERIVED FROM GPS-RTK OBSERVATIONS PROCESSED THROUGH OPUS, UTILIZING THE GEOID03 MODEL.