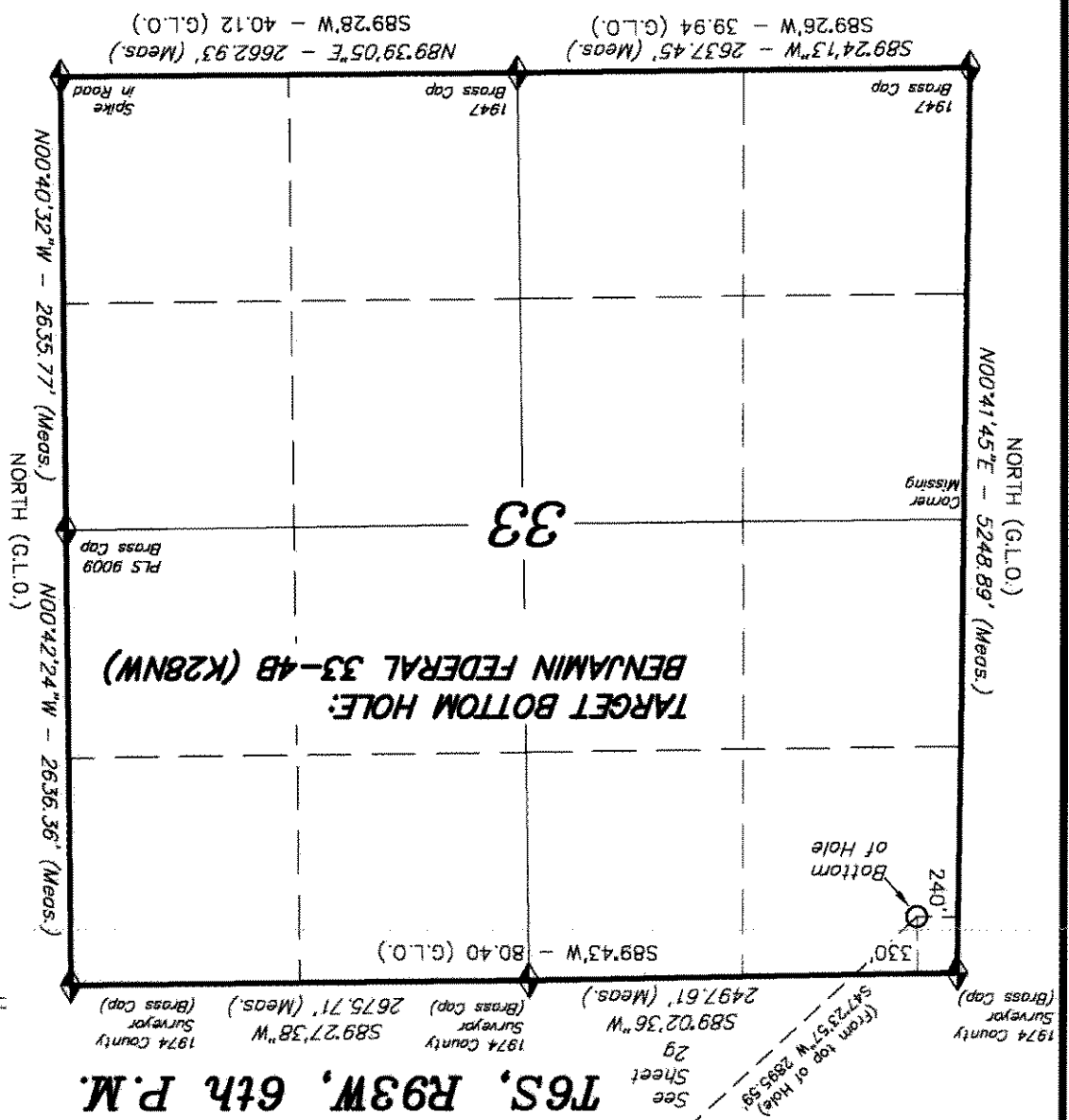


◆ = SECTION CORNERS LOCATED

Basis of elevation is the Ritte 2 Triangulation Station, 39°31'53.80" N Lat. & 107°47'07.78" W Long. (NAD 83). Elevation = 5323.1' (NAVD88).

IMPROVEMENT NOTE:  
See addendum to legal plat (sheet 2u) for visible improvements within 400' of the proposed well pad.



**T6S, R93W, 6th P.M.**

See Sheet 29  
S89°02'36"W  
2497.61' (Meas.)  
S47°23'51"W 2893.59'  
(From top of Hole)

1974 County Surveyor  
S89°27'38"W  
2675.71' (Meas.)  
(Brass Cap)

1974 County Surveyor  
(Brass Cap)

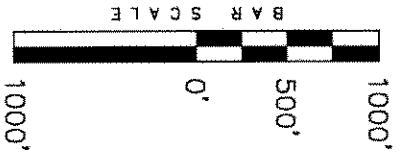
DATE SURVEYED: 06-11-10	SURVEYED BY: C.D.S.	DATE DRAWN: 06-14-10	DRAWN BY: L.C.S.	REVISIONS: L.C.S. 10-25-10
DATE SURVEYED: 06-11-10		DRAWN BY: L.C.S.		SCALE: 1" = 1000'
SURVEYED BY: C.D.S.		DRAWN BY: L.C.S.		L.C.S. 10-25-10

**TRI STATE LAND SURVEYING & CONSULTING**  
180 NORTH VERNAL AVE - VERNAL, UTAH 84078  
(435) 781-2501

REGISTERED LAND SURVEYOR  
REGISTRATION No. 30125  
STATE OF COLORADO  
ADDITIONAL LAND SURVEYOR

THIS IS TO CERTIFY THAT THE ABOVE PLAT WAS PREPARED FROM FIELD NOTES OF A NORMAL SURVEY MADE BY ME OR UNDER MY SUPERVISION. THE LOCATION HAS BEEN STAKED ON THE GROUND AS SHOWN ON THE PLAT, AND THAT THE SAME ARE TRUE AND CORRECT TO THE BEST OF MY KNOWLEDGE AND BELIEF.

- NOTES:**
- Well footages are measured at right angles to the Section Lines.
  - Bearings are based on Global Positioning Satellite observations.
  - Bottom of hole footages are 330' FNL & 240' FWL of Section 33.
  - G.P.S. Operator: C.D. Slough, (PDOP) = 2.8



TARGET BOTTOM HOLE, BENJAMIN FEDERAL 33-4B, (K28NW), LOCATED AS SHOWN IN THE NW 1/4 NW 1/4 OF SECTION 33, T6S, R93W, 6th P.M. GARFIELD COUNTY, COLORADO.

**ENCANA OIL & GAS (USA) INC** 08 2010

RECEIVED

