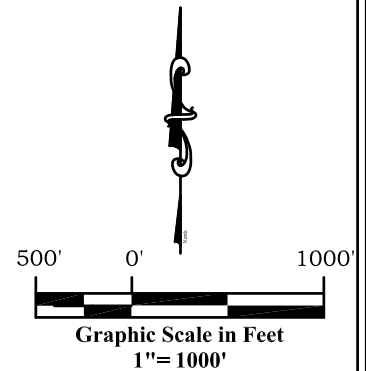
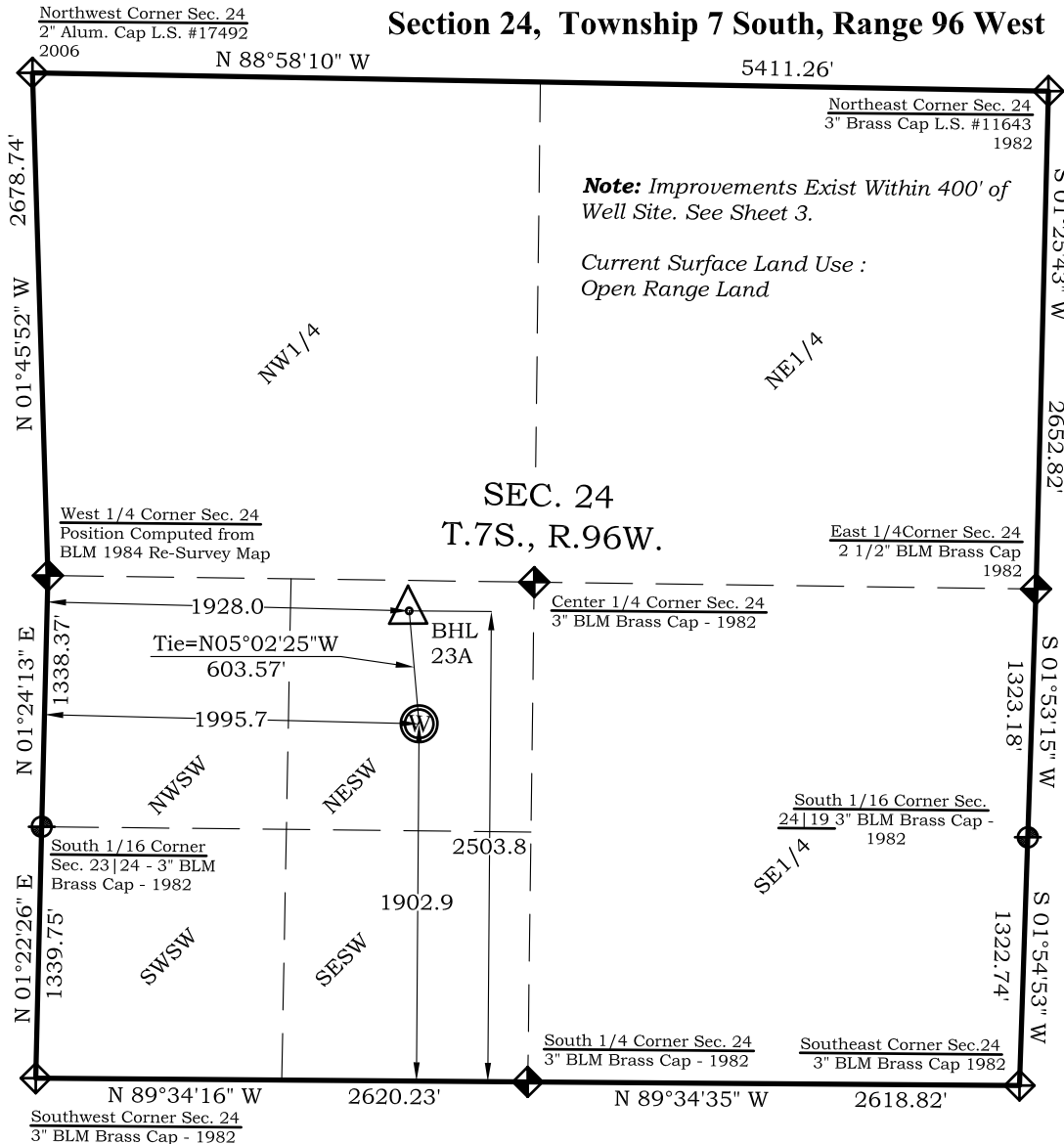


Well Location Plat BAT 23A-24-07-96

Section 24, Township 7 South, Range 96 West



Bottom Hole: BAT 23A-24-07-96

2504' FSL
1928' FWL

NAD83

Lat: 39.422486482°N
Long: 108.060503421°W

NAD27

Lat: 39.422508301°N
Long: 108.059872600°W

Surface: BAT 23A-24-07-96

1903' FSL
1996' FWL
Gnd El= 5183
Pad El= 5182.5

NAD83

Lat: 39.420842503°N
Long: 108.060243736°W

NAD27

Lat: 39.420864317°N
Long: 108.059612936°W

UTM 13 NORTH
NAD 1983
NORTHING
14330514.254
EASTING
776115.776

Legend

- ◆ - Field Surveyed Section Corner
- ◆ - Field Surveyed Quarter Corner
- ⊙ - Calculated Section Corner Location
- ⊕ - Field Surveyed 1/6 Corner

Notes:

1. LATITUDE AND LONGITUDE COORDINATES ARE DIFFERENTIALLY CORRECTED AND BASED ON PUBLISHED NGS CONTROL STATION "KOESELL". SYSTEM: UTM ZONE: 13 NORTH DATUM: NAD 1983 (CONUS)
2. ELEVATIONS ARE BASED ON NAVD OF 1983.
3. ALL BOTTOM AND TOP HOLE LOCATIONS ARE MEASURED 90 DEGREES FROM SECTION LINE.
4. USGS QUADRANGLE MAP "PARACHUTE".
5. CURRENT SURFACE LAND USE: HAY FIELD.
6. PDOP AT THE TIME OF LOCATION OF SURFACE WELL = 2.4

SURVEYOR'S CERTIFICATE

I, SCOTT E. AIBNER, A REGISTERED LAND SURVEYOR, LICENSED UNDER THE LAWS OF THE STATE OF COLORADO DO HEREBY CERTIFY THAT THE SURVEY SHOWN HEREON WAS PREPARED BY RIVER VALLEY SURVEY, INC., FOR ANTERO RESOURCES, BY ME OR UNDER MY DIRECT SUPERVISION AND THAT THIS PLAT IS A TRUE REPRESENTATION THEREOF.

BY:  09/22/10
SCOTT E. AIBNER, COLORADO REG. NO. 31143



River Valley Survey, Inc.
110 East 3rd. Street, Suite 213
Rifle, Colorado 81650
Ph: 970-379-7846

Project: Speakman A Pad

Field Date: 08-05-10

Date: 09-22-10

Scale: 1"= 1000'

Sheet: 1 of 11

**Well Location Plat
Prepared For Antero Resources**

Situate In:
SW 1/4 Section 24, T.7S., R. 96 W. of the
6th P.M., Garfield County, Colorado

