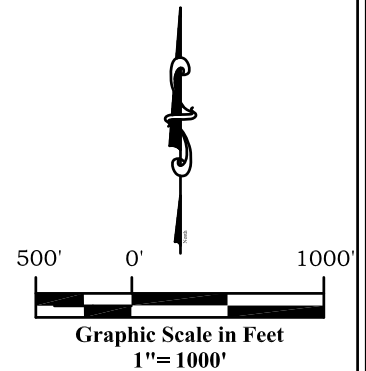
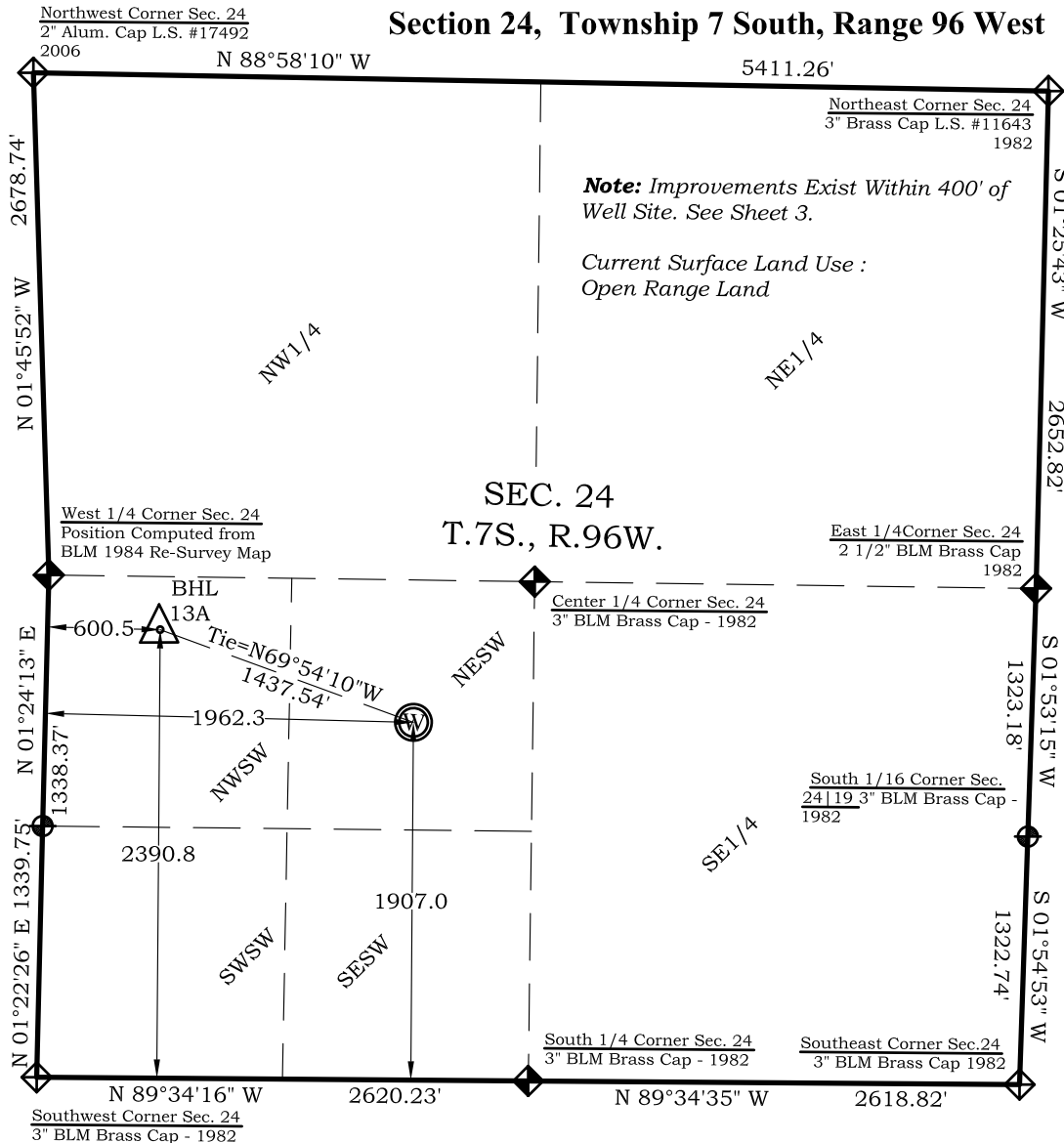


Well Location Plat BAT 13A-24-07-96

Section 24, Township 7 South, Range 96 West



Bottom Hole: BAT 13A-24-07-96

2391' FSL

600' FWL

NAD83

Lat: 39.422079987°N

Long: 108.065195224°W

NAD27

Lat: 39.422101801°N

Long: 108.064564200°W

Surface: BAT 13A-24-07-96

1907' FSL

1962' FWL

Gnd El= 5183.5

Pad El= 5182.5

NAD83

Lat: 39.420851091°N

Long: 108.060362217°W

NAD27

Lat: 39.420872904°N

Long: 108.059731412°W

UTM 13 NORTH

NAD 1983

NORTHING

14330518.518

EASTING

776082.414

Prepared For Antero Resources
Proposed BAT 13A-24-07-96 Well Situate in The
NE $\frac{1}{4}$ SW $\frac{1}{4}$ Section 24, Township 7 South, Range 96 West
of the 6 th. Principal Meridian, County of Garfield, State
of Colorado

SURVEYOR'S CERTIFICATE

I, SCOTT E. AIBNER, A REGISTERED LAND SURVEYOR, LICENSED UNDER THE LAWS OF THE STATE OF COLORADO DO HEREBY CERTIFY THAT THE SURVEY SHOWN HEREON WAS PREPARED BY RIVER VALLEY SURVEY, INC., FOR ANTERO RESOURCES, BY ME OR UNDER MY DIRECT SUPERVISION AND THAT THIS PLAT IS A TRUE REPRESENTATION THEREOF.

BY:  09/22/10
SCOTT E. AIBNER, COLORADO REG. NO. 31143

Notes:

1. LATITUDE AND LONGITUDE COORDINATES ARE DIFFERENTIALLY CORRECTED AND BASED ON PUBLISHED NGS CONTROL STATION "KOESELL". SYSTEM: UTM ZONE: 13 NORTH DATUM: NAD 1983 (CONUS)
2. ELEVATIONS ARE BASED ON NAVD OF 1983.
3. ALL BOTTOM AND TOP HOLE LOCATIONS ARE MEASURED 90 DEGREES FROM SECTION LINE.
4. USGS QUADRANGLE MAP "PARACHUTE".
5. CURRENT SURFACE LAND USE: HAY FIELD.
6. PDOP AT THE TIME OF LOCATION OF SURFACE WELL = 2.4

- Legend**
- ◆ - Field Surveyed Section Corner
 - ◆ - Field Surveyed Quarter Corner
 - ⊙ - Calculated Section Corner Location
 - ⊕ - Field Surveyed $\frac{1}{6}$ Corner



River Valley Survey, Inc.
110 East 3rd. Street, Suite 213
Rifle, Colorado 81650
Ph: 970-379-7846

Project: Speakman A Pad

Field Date: 08-05-10

Date: 09-22-10

Scale: 1"= 1000'

Sheet: 1 of 11

Well Location Plat
Prepared For Antero Resources

Situate In:
SW $\frac{1}{4}$ Section 24, T.7S., R. 96 W. of the
6th P.M., Garfield County, Colorado

