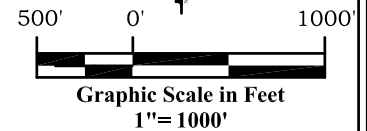
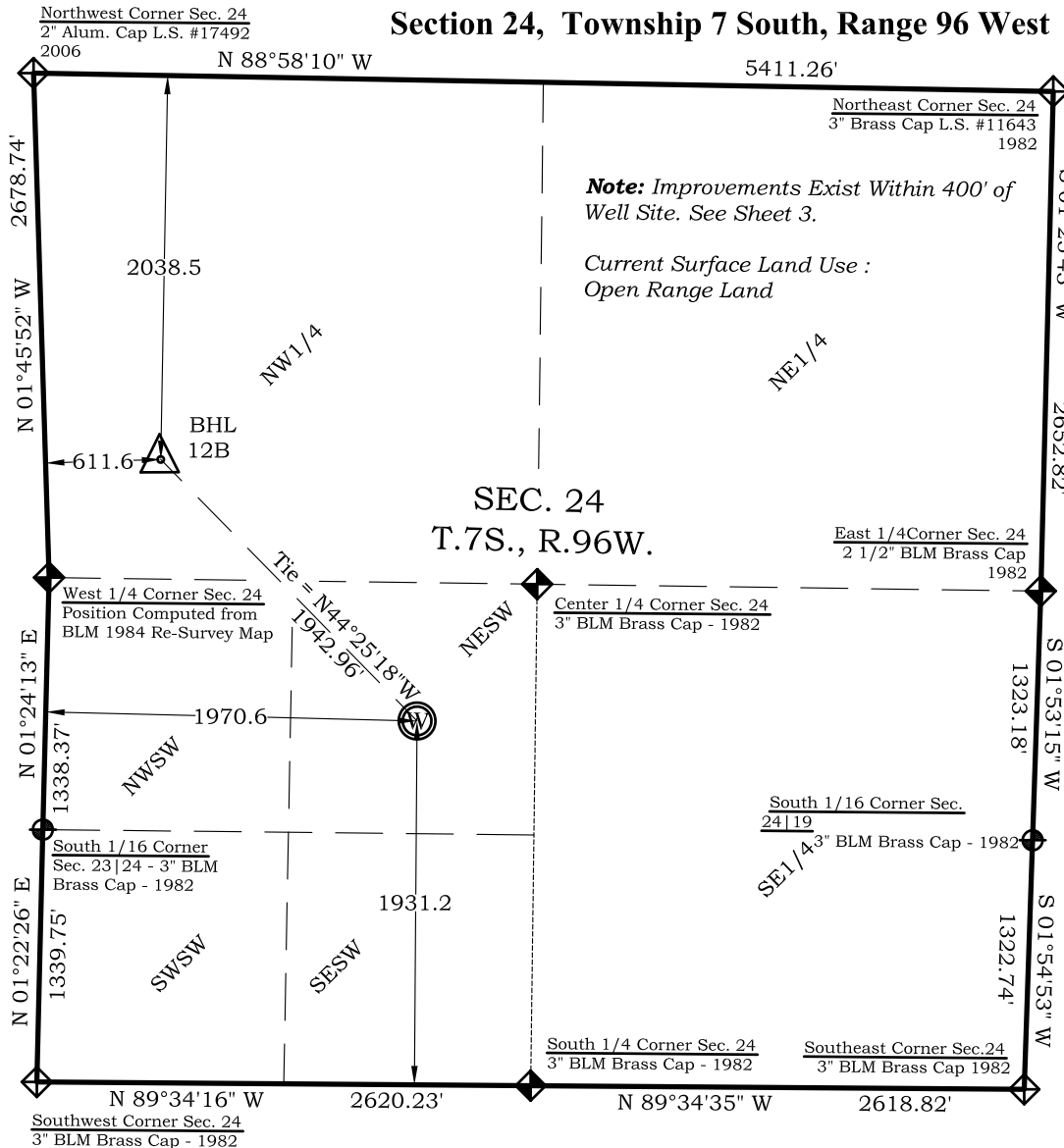


# Well Location Plat BAT 12B-24-07-96

Section 24, Township 7 South, Range 96 West



## Bottom Hole: BAT 12B-24-07-96

2038' FNL

612' FWL

NAD83

Lat: 39.424597180°N

Long: 108.065309244°W

NAD27

Lat: 39.424619001°N

Long: 108.064678200°W

## Surface: BAT 12B-24-07-96

1931' FSL

1971' FWL

Gnd El= 5182

Pad El= 5182.5

NAD83

Lat: 39.420918161°N

Long: 108.060333667°W

NAD27

Lat: 39.420939975°N

Long: 108.059702862°W

UTM 13 NORTH

NAD 1983

NORTHING

14330542.672

EASTING

776091.308

## Legend

- Field Surveyed Section Corner
- Field Surveyed Quarter Corner
- Calculated Section Corner Location
- Field Surveyed 1/6 Corner

## Notes:

- LATITUDE AND LONGITUDE COORDINATES ARE DIFFERENTIALLY CORRECTED AND BASED ON PUBLISHED NGS CONTROL STATION "KOESELL". SYSTEM: UTM ZONE: 13 NORTH DATUM: NAD 1983 (CONUS)
- ELEVATIONS ARE BASED ON NAVD OF 1983.
- ALL BOTTOM AND TOP HOLE LOCATIONS ARE MEASURED 90 DEGREES FROM SECTION LINE.
- USGS QUADRANGLE MAP "PARACHUTE".
- CURRENT SURFACE LAND USE: HAY FIELD.
- PDOP AT THE TIME OF LOCATION OF SURFACE WELL = 2.4

## SURVEYOR'S CERTIFICATE

I, SCOTT E. AIBNER, A REGISTERED LAND SURVEYOR, LICENSED UNDER THE LAWS OF THE STATE OF COLORADO DO HEREBY CERTIFY THAT THE SURVEY SHOWN HEREON WAS PREPARED BY RIVER VALLEY SURVEY, INC., FOR ANTERO RESOURCES, BY ME OR UNDER MY DIRECT SUPERVISION AND THAT THIS PLAT IS A TRUE REPRESENTATION THEREOF.

BY:  09/22/10  
SCOTT E. AIBNER, COLORADO REG. NO. 31143



River Valley Survey, Inc.  
110 East 3rd. Street, Suite 213  
Rifle, Colorado 81650  
Ph: 970-379-7846

Project: Speakman A Pad

Field Date: 08-05-10

Date: 09-22-10

Scale: 1" = 1000'

Sheet: 1 of 11

Well Location Plat  
Prepared For Antero Resources

Situate In:  
SW 1/4 Section 24, T.7S., R. 96 W. of the  
6th P.M., Garfield County, Colorado

