

# ENSIGN

## Directional

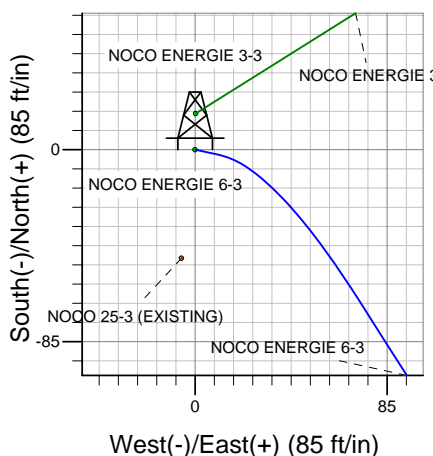
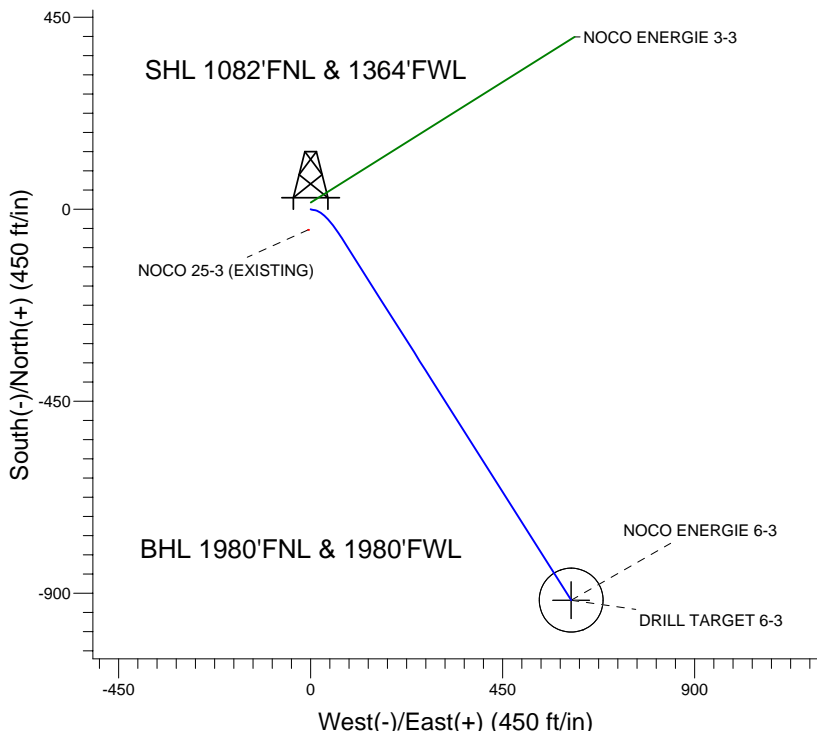
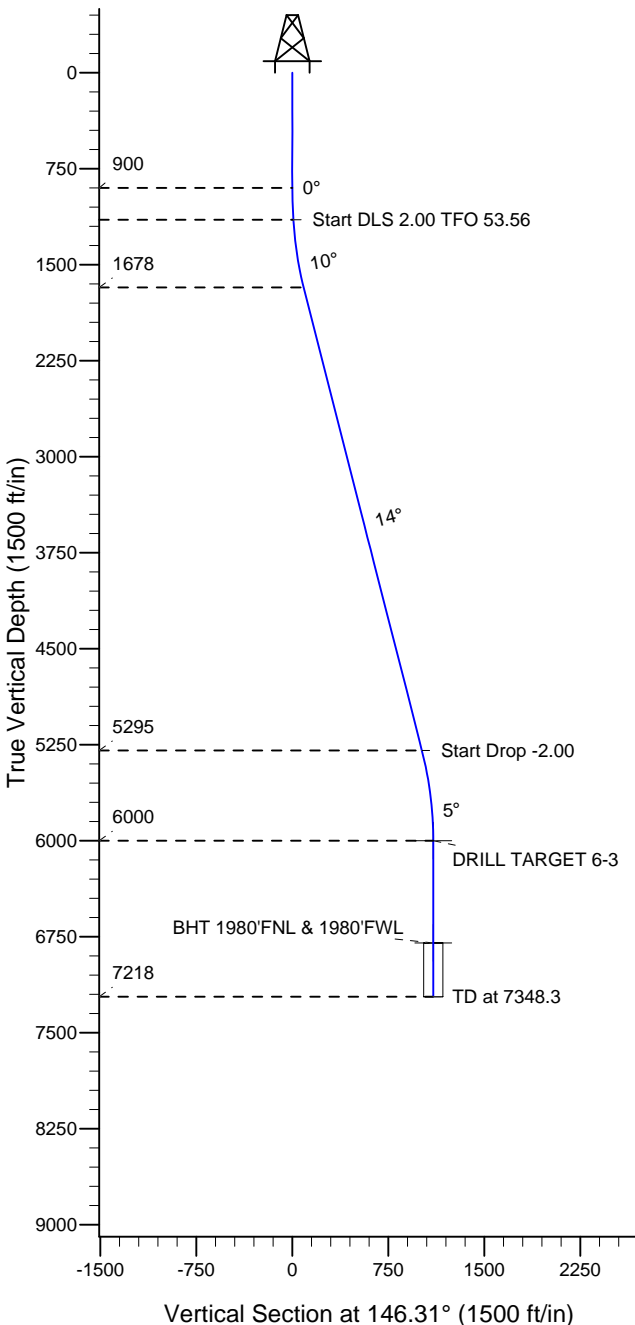
Well Name: **NOCO ENERGIE 6-3**

Surface Location: NOCO ENERGIE 6-3 PAD  
North American Datum 1983 , US State Plane 1983 , Colorado Northern Zone

Ground Elevation: 4778.0

+N/-S	+E/-W	Northing	Easting	Latitude	Longitude	Slot
0.0	0.0	1433526.47	3235237.94	40.520350	-104.653856	
		RKB EST 13' RKB @ 4791.0ft (RKB EST 13')				

### BAYWATER EXPLORATION & PRODUCTION



**NOCO ENERGIE 6-3**  
PLAN 1 JUNE 16, 2010  
11:17, June 16 2010



Azimuths to True North  
Magnetic North: 8.95°

Magnetic Field  
Strength: 53312.2snT  
Dip Angle: 67.20°  
Date: 6/16/2010  
Model: IGRF2010

#### WELLBORE TARGET DETAILS (LAT/LONG)

Name	TVD	+N/-S	+E/-W	Latitude	Longitude	Shape
DRILL TARGET 6-3	6000.0	-915.9	610.6	40.517836	-104.651660	Point
BHT 1980'FNL & 1980'FWL	6798.0	-915.9	610.6	40.517836	-104.651660	Circle (Radius: 75.0)

#### SECTION DETAILS

Sec	MD	Inc	Azi	TVD	+N/-S	+E/-W	DLeg	TFace	VSec	Target
1	0.0	0.00	0.00	0.0	0.0	0.0	0.00	0.00	0.0	
2	900.0	0.00	0.00	900.0	0.0	0.0	0.00	0.00	0.0	
3	1150.0	5.00	102.00	1149.7	-2.3	10.7	2.00	102.00	7.8	
4	1720.7	14.35	147.65	1712.2	-67.4	73.0	2.00	63.55	96.6	
5	5413.7	14.35	147.65	5290.1	-840.4	562.8	0.00	0.00	1011.4	
6	6131.1	0.00	0.00	6000.0	-915.9	610.6	2.00	180.00	1100.7	DRILL TARGET 6-3
7	7349.1	0.00	0.00	7218.0	-915.9	610.6	0.00	0.00	1100.7	



# **BAYWATER EXPLORATION & PRODUCTION**

**SEC. 3-T6N-R65W  
NOCO ENERGIE 6-3 PAD  
NOCO ENERGIE 6-3**

**Wellbore #1**

**Plan: PLAN 1 JUNE 16, 2010**

## **Standard Planning Report**

**16 June, 2010**

<b>Database:</b>	Landmark	<b>Local Co-ordinate Reference:</b>	Well NOCO ENERGIE 6-3
<b>Company:</b>	BAYWATER EXPLORATION & PRODUCTION	<b>TVD Reference:</b>	RKB @ 4791.0ft (RKB EST 13')
<b>Project:</b>	SEC. 3-T6N-R65W	<b>MD Reference:</b>	RKB @ 4791.0ft (RKB EST 13')
<b>Site:</b>	NOCO ENERGIE 6-3 PAD	<b>North Reference:</b>	True
<b>Well:</b>	NOCO ENERGIE 6-3	<b>Survey Calculation Method:</b>	Minimum Curvature
<b>Wellbore:</b>	Wellbore #1		
<b>Design:</b>	PLAN 1 JUNE 16, 2010		

<b>Project</b>	SEC. 3-T6N-R65W		
<b>Map System:</b>	US State Plane 1983	<b>System Datum:</b>	Mean Sea Level
<b>Geo Datum:</b>	North American Datum 1983		Using Well Reference Point
<b>Map Zone:</b>	Colorado Northern Zone		Using geodetic scale factor

Site						NOCO ENERGIE 6-3 PAD							
Site Position: From: Position Uncertainty:			Lat/Long  0.0 ft			Northing:		1,433,526.47 ft		Latitude:		40.520350	
						Easting:		3,235,237.94 ft		Longitude:		-104.653856	
						Slot Radius:		"		Grid Convergence:		0.55 °	

Well	NOCO ENERGIE 6-3					
Well Position	+N/-S	0.0 ft	Northing:	1,433,526.47 ft	Latitude:	40.520350
	+E/-W	0.0 ft	Easting:	3,235,237.94 ft	Longitude:	-104.653856
Position Uncertainty		0.0 ft	Wellhead Elevation:	ft	Ground Level:	4,778.0 ft

<b>Wellbore</b>	Wellbore #1				
<b>Magnetics</b>	<b>Model Name</b>	<b>Sample Date</b>	<b>Declination (°)</b>	<b>Dip Angle (°)</b>	<b>Field Strength (nT)</b>
	IGRF2010	6/16/2010	8.95	67.20	53,312

<b>Design</b>	PLAN 1 JUNE 16, 2010			
<b>Audit Notes:</b>				
<b>Version:</b>	<b>Phase:</b>	PROTOTYPE	<b>Tie On Depth:</b>	0.0
<b>Vertical Section:</b>	<b>Depth From (TVD) (ft)</b>	<b>+N/-S (ft)</b>	<b>+E/-W (ft)</b>	<b>Direction (°)</b>
	0.0	0.0	0.0	146.31

<b>Plan Sections</b>										
Measured Depth (ft)	Inclination (°)	Azimuth (°)	Vertical Depth (ft)	+N/-S (ft)	+E/-W (ft)	Dogleg Rate (°/100ft)	Build Rate (°/100ft)	Turn Rate (°/100ft)	TFO (°)	Target
0.0	0.00	0.00	0.0	0.0	0.0	0.00	0.00	0.00	0.00	
900.0	0.00	0.00	900.0	0.0	0.0	0.00	0.00	0.00	0.00	
1,150.0	5.00	102.00	1,149.7	-2.3	10.7	2.00	2.00	0.00	102.00	
1,720.7	14.35	147.65	1,712.2	-67.4	73.0	2.00	1.64	8.00	63.55	
5,413.7	14.35	147.65	5,290.1	-840.4	562.8	0.00	0.00	0.00	0.00	
6,131.1	0.00	0.00	6,000.0	-915.9	610.6	2.00	-2.00	0.00	180.00	DRILL TARGET 6-3
7,349.1	0.00	0.00	7,218.0	-915.9	610.6	0.00	0.00	0.00	0.00	

<b>Database:</b>	Landmark	<b>Local Co-ordinate Reference:</b>	Well NOCO ENERGIE 6-3
<b>Company:</b>	BAYWATER EXPLORATION & PRODUCTION	<b>TVD Reference:</b>	RKB @ 4791.0ft (RKB EST 13')
<b>Project:</b>	SEC. 3-T6N-R65W	<b>MD Reference:</b>	RKB @ 4791.0ft (RKB EST 13')
<b>Site:</b>	NOCO ENERGIE 6-3 PAD	<b>North Reference:</b>	True
<b>Well:</b>	NOCO ENERGIE 6-3	<b>Survey Calculation Method:</b>	Minimum Curvature
<b>Wellbore:</b>	Wellbore #1		
<b>Design:</b>	PLAN 1 JUNE 16, 2010		

Planned Survey									
Measured Depth (ft)	Inclination (°)	Azimuth (°)	Vertical Depth (ft)	+N-S (ft)	+E-W (ft)	Vertical Section (ft)	Dogleg Rate (°/100ft)	Build Rate (°/100ft)	Turn Rate (°/100ft)
0.0	0.00	0.00	0.0	0.0	0.0	0.0	0.00	0.00	0.00
50.0	0.00	0.00	50.0	0.0	0.0	0.0	0.00	0.00	0.00
100.0	0.00	0.00	100.0	0.0	0.0	0.0	0.00	0.00	0.00
150.0	0.00	0.00	150.0	0.0	0.0	0.0	0.00	0.00	0.00
200.0	0.00	0.00	200.0	0.0	0.0	0.0	0.00	0.00	0.00
250.0	0.00	0.00	250.0	0.0	0.0	0.0	0.00	0.00	0.00
300.0	0.00	0.00	300.0	0.0	0.0	0.0	0.00	0.00	0.00
350.0	0.00	0.00	350.0	0.0	0.0	0.0	0.00	0.00	0.00
400.0	0.00	0.00	400.0	0.0	0.0	0.0	0.00	0.00	0.00
450.0	0.00	0.00	450.0	0.0	0.0	0.0	0.00	0.00	0.00
500.0	0.00	0.00	500.0	0.0	0.0	0.0	0.00	0.00	0.00
550.0	0.00	0.00	550.0	0.0	0.0	0.0	0.00	0.00	0.00
600.0	0.00	0.00	600.0	0.0	0.0	0.0	0.00	0.00	0.00
650.0	0.00	0.00	650.0	0.0	0.0	0.0	0.00	0.00	0.00
700.0	0.00	0.00	700.0	0.0	0.0	0.0	0.00	0.00	0.00
750.0	0.00	0.00	750.0	0.0	0.0	0.0	0.00	0.00	0.00
800.0	0.00	0.00	800.0	0.0	0.0	0.0	0.00	0.00	0.00
850.0	0.00	0.00	850.0	0.0	0.0	0.0	0.00	0.00	0.00
900.0	0.00	0.00	900.0	0.0	0.0	0.0	0.00	0.00	0.00
950.0	1.00	102.00	950.0	-0.1	0.4	0.3	2.00	2.00	0.00
1,000.0	2.00	102.00	1,000.0	-0.4	1.7	1.2	2.00	2.00	0.00
1,050.0	3.00	102.00	1,049.9	-0.8	3.8	2.8	2.00	2.00	0.00
1,100.0	4.00	102.00	1,099.8	-1.5	6.8	5.0	2.00	2.00	0.00
1,150.0	5.00	102.00	1,149.7	-2.3	10.7	7.8	2.00	2.00	0.00
1,200.0	5.52	111.35	1,199.5	-3.6	15.0	11.3	2.00	1.04	18.70
1,250.0	6.16	118.94	1,249.2	-5.8	19.6	15.7	2.00	1.28	15.18
1,300.0	6.88	125.03	1,298.9	-8.8	24.4	20.9	2.00	1.45	12.17
1,350.0	7.67	129.91	1,348.5	-12.6	29.4	26.8	2.00	1.57	9.78
1,400.0	8.50	133.87	1,398.0	-17.3	34.7	33.7	2.00	1.66	7.92
1,450.0	9.36	137.12	1,447.4	-22.9	40.1	41.3	2.00	1.73	6.50
1,500.0	10.25	139.82	1,496.7	-29.3	45.7	49.7	2.00	1.78	5.39
1,550.0	11.16	142.09	1,545.8	-36.5	51.6	59.0	2.00	1.81	4.53
1,600.0	12.08	144.01	1,594.8	-44.5	57.6	69.0	2.00	1.84	3.85
1,650.0	13.01	145.67	1,643.6	-53.4	63.9	79.9	2.00	1.87	3.31
1,700.0	13.95	147.11	1,692.2	-63.1	70.3	91.5	2.00	1.88	2.87
1,720.7	14.35	147.65	1,712.2	-67.4	73.0	96.6	2.00	1.90	2.61
1,750.0	14.35	147.65	1,740.6	-73.5	76.9	103.8	0.00	0.00	0.00
1,800.0	14.35	147.65	1,789.1	-84.0	83.6	116.2	0.00	0.00	0.00
1,850.0	14.35	147.65	1,837.5	-94.5	90.2	128.6	0.00	0.00	0.00
1,900.0	14.35	147.65	1,886.0	-104.9	96.8	141.0	0.00	0.00	0.00
1,950.0	14.35	147.65	1,934.4	-115.4	103.4	153.4	0.00	0.00	0.00
2,000.0	14.35	147.65	1,982.8	-125.8	110.1	165.8	0.00	0.00	0.00
2,050.0	14.35	147.65	2,031.3	-136.3	116.7	178.2	0.00	0.00	0.00
2,100.0	14.35	147.65	2,079.7	-146.8	123.3	190.5	0.00	0.00	0.00
2,150.0	14.35	147.65	2,128.2	-157.2	130.0	202.9	0.00	0.00	0.00
2,200.0	14.35	147.65	2,176.6	-167.7	136.6	215.3	0.00	0.00	0.00
2,250.0	14.35	147.65	2,225.1	-178.2	143.2	227.7	0.00	0.00	0.00
2,300.0	14.35	147.65	2,273.5	-188.6	149.9	240.1	0.00	0.00	0.00
2,350.0	14.35	147.65	2,321.9	-199.1	156.5	252.5	0.00	0.00	0.00
2,400.0	14.35	147.65	2,370.4	-209.6	163.1	264.9	0.00	0.00	0.00
2,450.0	14.35	147.65	2,418.8	-220.0	169.7	277.2	0.00	0.00	0.00
2,500.0	14.35	147.65	2,467.3	-230.5	176.4	289.6	0.00	0.00	0.00
2,550.0	14.35	147.65	2,515.7	-241.0	183.0	302.0	0.00	0.00	0.00

<b>Database:</b>	Landmark	<b>Local Co-ordinate Reference:</b>	Well NOCO ENERGIE 6-3
<b>Company:</b>	BAYWATER EXPLORATION & PRODUCTION	<b>TVD Reference:</b>	RKB @ 4791.0ft (RKB EST 13')
<b>Project:</b>	SEC. 3-T6N-R65W	<b>MD Reference:</b>	RKB @ 4791.0ft (RKB EST 13')
<b>Site:</b>	NOCO ENERGIE 6-3 PAD	<b>North Reference:</b>	True
<b>Well:</b>	NOCO ENERGIE 6-3	<b>Survey Calculation Method:</b>	Minimum Curvature
<b>Wellbore:</b>	Wellbore #1		
<b>Design:</b>	PLAN 1 JUNE 16, 2010		

Planned Survey										
Measured Depth (ft)	Inclination (°)	Azimuth (°)	Vertical Depth (ft)	+N/-S (ft)	+E/-W (ft)	Vertical Section (ft)	Dogleg Rate (°/100ft)	Build Rate (°/100ft)	Turn Rate (°/100ft)	
2,600.0	14.35	147.65	2,564.1	-251.4	189.6	314.4	0.00	0.00	0.00	
2,650.0	14.35	147.65	2,612.6	-261.9	196.3	326.8	0.00	0.00	0.00	
2,700.0	14.35	147.65	2,661.0	-272.4	202.9	339.2	0.00	0.00	0.00	
2,750.0	14.35	147.65	2,709.5	-282.8	209.5	351.6	0.00	0.00	0.00	
2,800.0	14.35	147.65	2,757.9	-293.3	216.2	363.9	0.00	0.00	0.00	
2,850.0	14.35	147.65	2,806.3	-303.8	222.8	376.3	0.00	0.00	0.00	
2,900.0	14.35	147.65	2,854.8	-314.2	229.4	388.7	0.00	0.00	0.00	
2,950.0	14.35	147.65	2,903.2	-324.7	236.0	401.1	0.00	0.00	0.00	
3,000.0	14.35	147.65	2,951.7	-335.2	242.7	413.5	0.00	0.00	0.00	
3,050.0	14.35	147.65	3,000.1	-345.6	249.3	425.9	0.00	0.00	0.00	
3,100.0	14.35	147.65	3,048.5	-356.1	255.9	438.3	0.00	0.00	0.00	
3,150.0	14.35	147.65	3,097.0	-366.6	262.6	450.7	0.00	0.00	0.00	
3,200.0	14.35	147.65	3,145.4	-377.0	269.2	463.0	0.00	0.00	0.00	
3,250.0	14.35	147.65	3,193.9	-387.5	275.8	475.4	0.00	0.00	0.00	
3,300.0	14.35	147.65	3,242.3	-398.0	282.5	487.8	0.00	0.00	0.00	
3,350.0	14.35	147.65	3,290.7	-408.4	289.1	500.2	0.00	0.00	0.00	
3,400.0	14.35	147.65	3,339.2	-418.9	295.7	512.6	0.00	0.00	0.00	
3,450.0	14.35	147.65	3,387.6	-429.4	302.4	525.0	0.00	0.00	0.00	
3,500.0	14.35	147.65	3,436.1	-439.8	309.0	537.4	0.00	0.00	0.00	
3,550.0	14.35	147.65	3,484.5	-450.3	315.6	549.7	0.00	0.00	0.00	
3,600.0	14.35	147.65	3,533.0	-460.8	322.2	562.1	0.00	0.00	0.00	
3,650.0	14.35	147.65	3,581.4	-471.2	328.9	574.5	0.00	0.00	0.00	
3,700.0	14.35	147.65	3,629.8	-481.7	335.5	586.9	0.00	0.00	0.00	
3,750.0	14.35	147.65	3,678.3	-492.2	342.1	599.3	0.00	0.00	0.00	
3,800.0	14.35	147.65	3,726.7	-502.6	348.8	611.7	0.00	0.00	0.00	
3,850.0	14.35	147.65	3,775.2	-513.1	355.4	624.1	0.00	0.00	0.00	
3,900.0	14.35	147.65	3,823.6	-523.6	362.0	636.4	0.00	0.00	0.00	
3,950.0	14.35	147.65	3,872.0	-534.0	368.7	648.8	0.00	0.00	0.00	
4,000.0	14.35	147.65	3,920.5	-544.5	375.3	661.2	0.00	0.00	0.00	
4,050.0	14.35	147.65	3,968.9	-555.0	381.9	673.6	0.00	0.00	0.00	
4,100.0	14.35	147.65	4,017.4	-565.4	388.5	686.0	0.00	0.00	0.00	
4,150.0	14.35	147.65	4,065.8	-575.9	395.2	698.4	0.00	0.00	0.00	
4,200.0	14.35	147.65	4,114.2	-586.4	401.8	710.8	0.00	0.00	0.00	
4,250.0	14.35	147.65	4,162.7	-596.8	408.4	723.1	0.00	0.00	0.00	
4,300.0	14.35	147.65	4,211.1	-607.3	415.1	735.5	0.00	0.00	0.00	
4,350.0	14.35	147.65	4,259.6	-617.8	421.7	747.9	0.00	0.00	0.00	
4,400.0	14.35	147.65	4,308.0	-628.2	428.3	760.3	0.00	0.00	0.00	
4,450.0	14.35	147.65	4,356.4	-638.7	435.0	772.7	0.00	0.00	0.00	
4,500.0	14.35	147.65	4,404.9	-649.2	441.6	785.1	0.00	0.00	0.00	
4,550.0	14.35	147.65	4,453.3	-659.6	448.2	797.5	0.00	0.00	0.00	
4,600.0	14.35	147.65	4,501.8	-670.1	454.8	809.8	0.00	0.00	0.00	
4,650.0	14.35	147.65	4,550.2	-680.6	461.5	822.2	0.00	0.00	0.00	
4,700.0	14.35	147.65	4,598.6	-691.0	468.1	834.6	0.00	0.00	0.00	
4,750.0	14.35	147.65	4,647.1	-701.5	474.7	847.0	0.00	0.00	0.00	
4,800.0	14.35	147.65	4,695.5	-711.9	481.4	859.4	0.00	0.00	0.00	
4,850.0	14.35	147.65	4,744.0	-722.4	488.0	871.8	0.00	0.00	0.00	
4,900.0	14.35	147.65	4,792.4	-732.9	494.6	884.2	0.00	0.00	0.00	
4,950.0	14.35	147.65	4,840.8	-743.3	501.3	896.6	0.00	0.00	0.00	
5,000.0	14.35	147.65	4,889.3	-753.8	507.9	908.9	0.00	0.00	0.00	
5,050.0	14.35	147.65	4,937.7	-764.3	514.5	921.3	0.00	0.00	0.00	
5,100.0	14.35	147.65	4,986.2	-774.7	521.2	933.7	0.00	0.00	0.00	
5,150.0	14.35	147.65	5,034.6	-785.2	527.8	946.1	0.00	0.00	0.00	
5,200.0	14.35	147.65	5,083.1	-795.7	534.4	958.5	0.00	0.00	0.00	

<b>Database:</b>	Landmark	<b>Local Co-ordinate Reference:</b>	Well NOCO ENERGIE 6-3
<b>Company:</b>	BAYWATER EXPLORATION & PRODUCTION	<b>TVD Reference:</b>	RKB @ 4791.0ft (RKB EST 13')
<b>Project:</b>	SEC. 3-T6N-R65W	<b>MD Reference:</b>	RKB @ 4791.0ft (RKB EST 13')
<b>Site:</b>	NOCO ENERGIE 6-3 PAD	<b>North Reference:</b>	True
<b>Well:</b>	NOCO ENERGIE 6-3	<b>Survey Calculation Method:</b>	Minimum Curvature
<b>Wellbore:</b>	Wellbore #1		
<b>Design:</b>	PLAN 1 JUNE 16, 2010		

Planned Survey									
Measured Depth (ft)	Inclination (°)	Azimuth (°)	Vertical Depth (ft)	+N/-S (ft)	+E/-W (ft)	Vertical Section (ft)	Dogleg Rate (°/100ft)	Build Rate (°/100ft)	Turn Rate (°/100ft)
5,250.0	14.35	147.65	5,131.5	-806.1	541.0	970.9	0.00	0.00	0.00
5,300.0	14.35	147.65	5,179.9	-816.6	547.7	983.3	0.00	0.00	0.00
5,350.0	14.35	147.65	5,228.4	-827.1	554.3	995.6	0.00	0.00	0.00
5,400.0	14.35	147.65	5,276.8	-837.5	560.9	1,008.0	0.00	0.00	0.00
5,413.7	14.35	147.65	5,290.1	-840.4	562.8	1,011.4	0.00	0.00	0.00
5,450.0	13.62	147.65	5,325.3	-847.8	567.4	1,020.2	2.00	-2.00	0.00
5,500.0	12.62	147.65	5,374.0	-857.4	573.5	1,031.5	2.00	-2.00	0.00
5,550.0	11.62	147.65	5,422.9	-866.3	579.1	1,042.0	2.00	-2.00	0.00
5,600.0	10.62	147.65	5,472.0	-874.4	584.3	1,051.7	2.00	-2.00	0.00
5,650.0	9.62	147.65	5,521.2	-881.8	589.0	1,060.5	2.00	-2.00	0.00
5,700.0	8.62	147.65	5,570.5	-888.5	593.2	1,068.4	2.00	-2.00	0.00
5,750.0	7.62	147.65	5,620.0	-894.5	597.0	1,075.4	2.00	-2.00	0.00
5,800.0	6.62	147.65	5,669.7	-899.7	600.3	1,081.6	2.00	-2.00	0.00
5,850.0	5.62	147.65	5,719.4	-904.3	603.2	1,087.0	2.00	-2.00	0.00
5,900.0	4.62	147.65	5,769.2	-908.0	605.6	1,091.4	2.00	-2.00	0.00
5,950.0	3.62	147.65	5,819.0	-911.1	607.5	1,095.0	2.00	-2.00	0.00
6,000.0	2.62	147.65	5,869.0	-913.4	609.0	1,097.8	2.00	-2.00	0.00
6,050.0	1.62	147.65	5,918.9	-914.9	610.0	1,099.6	2.00	-2.00	0.00
6,100.0	0.62	147.65	5,968.9	-915.7	610.5	1,100.6	2.00	-2.00	0.00
6,131.1	0.00	0.00	6,000.0	-915.9	610.6	1,100.7	2.00	-2.00	0.00
<b>DRILL TARGET 6-3</b>									
6,150.0	0.00	0.00	6,018.9	-915.9	610.6	1,100.7	0.00	0.00	0.00
6,200.0	0.00	0.00	6,068.9	-915.9	610.6	1,100.7	0.00	0.00	0.00
6,250.0	0.00	0.00	6,118.9	-915.9	610.6	1,100.7	0.00	0.00	0.00
6,300.0	0.00	0.00	6,168.9	-915.9	610.6	1,100.7	0.00	0.00	0.00
6,350.0	0.00	0.00	6,218.9	-915.9	610.6	1,100.7	0.00	0.00	0.00
6,400.0	0.00	0.00	6,268.9	-915.9	610.6	1,100.7	0.00	0.00	0.00
6,450.0	0.00	0.00	6,318.9	-915.9	610.6	1,100.7	0.00	0.00	0.00
6,500.0	0.00	0.00	6,368.9	-915.9	610.6	1,100.7	0.00	0.00	0.00
6,550.0	0.00	0.00	6,418.9	-915.9	610.6	1,100.7	0.00	0.00	0.00
6,600.0	0.00	0.00	6,468.9	-915.9	610.6	1,100.7	0.00	0.00	0.00
6,650.0	0.00	0.00	6,518.9	-915.9	610.6	1,100.7	0.00	0.00	0.00
6,700.0	0.00	0.00	6,568.9	-915.9	610.6	1,100.7	0.00	0.00	0.00
6,750.0	0.00	0.00	6,618.9	-915.9	610.6	1,100.7	0.00	0.00	0.00
6,800.0	0.00	0.00	6,668.9	-915.9	610.6	1,100.7	0.00	0.00	0.00
6,850.0	0.00	0.00	6,718.9	-915.9	610.6	1,100.7	0.00	0.00	0.00
6,900.0	0.00	0.00	6,768.9	-915.9	610.6	1,100.7	0.00	0.00	0.00
6,929.1	0.00	0.00	6,798.0	-915.9	610.6	1,100.7	0.00	0.00	0.00
<b>BHT 1980'FNL &amp; 1980'FWL</b>									
6,950.0	0.00	0.00	6,818.9	-915.9	610.6	1,100.7	0.00	0.00	0.00
7,000.0	0.00	0.00	6,868.9	-915.9	610.6	1,100.7	0.00	0.00	0.00
7,050.0	0.00	0.00	6,918.9	-915.9	610.6	1,100.7	0.00	0.00	0.00
7,100.0	0.00	0.00	6,968.9	-915.9	610.6	1,100.7	0.00	0.00	0.00
7,150.0	0.00	0.00	7,018.9	-915.9	610.6	1,100.7	0.00	0.00	0.00
7,200.0	0.00	0.00	7,068.9	-915.9	610.6	1,100.7	0.00	0.00	0.00
7,250.0	0.00	0.00	7,118.9	-915.9	610.6	1,100.7	0.00	0.00	0.00
7,300.0	0.00	0.00	7,168.9	-915.9	610.6	1,100.7	0.00	0.00	0.00
7,349.1	0.00	0.00	7,218.0	-915.9	610.6	1,100.7	0.00	0.00	0.00

<b>Database:</b>	Landmark	<b>Local Co-ordinate Reference:</b>	Well NOCO ENERGIE 6-3
<b>Company:</b>	BAYWATER EXPLORATION & PRODUCTION	<b>TVD Reference:</b>	RKB @ 4791.0ft (RKB EST 13')
<b>Project:</b>	SEC. 3-T6N-R65W	<b>MD Reference:</b>	RKB @ 4791.0ft (RKB EST 13')
<b>Site:</b>	NOCO ENERGIE 6-3 PAD	<b>North Reference:</b>	True
<b>Well:</b>	NOCO ENERGIE 6-3	<b>Survey Calculation Method:</b>	Minimum Curvature
<b>Wellbore:</b>	Wellbore #1		
<b>Design:</b>	PLAN 1 JUNE 16, 2010		

Targets									
Target Name									
- hit/miss target	Dip Angle	Dip Dir.	TVD	+N/-S	+E/-W	Northing	Easting	Latitude	Longitude
- Shape	(°)	(°)	(ft)	(ft)	(ft)	(ft)	(ft)		
BHT 1980'FNL & 1980' - plan hits target - Circle (radius 75.0)	0.00	0.00	6,798.0	-915.9	610.6	1,432,616.48	3,235,857.19	40.517836	-104.651660
DRILL TARGET 6-3 - plan hits target - Point	0.00	0.00	6,000.0	-915.9	610.6	1,432,616.48	3,235,857.19	40.517836	-104.651660



# **BAYWATER EXPLORATION & PRODUCTION**

**SEC. 3-T6N-R65W  
NOCO ENERGIE 6-3 PAD  
NOCO ENERGIE 6-3**

**Wellbore #1  
PLAN 1 JUNE 16, 2010**

## **Anticollision Report**

**16 June, 2010**



<b>Company:</b>	BAYWATER EXPLORATION & PRODUCTION	<b>Local Co-ordinate Reference:</b>	Well NOCO ENERGIE 6-3
<b>Project:</b>	SEC. 3-T6N-R65W	<b>TVD Reference:</b>	RKB @ 4791.0ft (RKB EST 13')
<b>Reference Site:</b>	NOCO ENERGIE 6-3 PAD	<b>MD Reference:</b>	RKB @ 4791.0ft (RKB EST 13')
<b>Site Error:</b>	0.0ft	<b>North Reference:</b>	True
<b>Reference Well:</b>	NOCO ENERGIE 6-3	<b>Survey Calculation Method:</b>	Minimum Curvature
<b>Well Error:</b>	0.0ft	<b>Output errors are at</b>	2.00 sigma
<b>Reference Wellbore</b>	Wellbore #1	<b>Database:</b>	Landmark
<b>Reference Design:</b>	PLAN 1 JUNE 16, 2010	<b>Offset TVD Reference:</b>	Offset Datum

<b>Reference</b>	PLAN 1 JUNE 16, 2010		
<b>Filter type:</b>	NO GLOBAL FILTER: Using user defined selection & filtering criteria		
<b>Interpolation Method:</b>	MD Interval 50.0ft	<b>Error Model:</b>	ISCWSA
<b>Depth Range:</b>	0.0 to 7,349.1ft	<b>Scan Method:</b>	Closest Approach 3D
<b>Results Limited by:</b>	Maximum center-center distance of 250.0ft	<b>Error Surface:</b>	Elliptical Conic
<b>Warning Levels Evaluated at:</b>	2.00 Sigma		

<b>Survey Tool Program</b>	<b>Date</b> 6/16/2010			
<b>From (ft)</b>	<b>To (ft)</b>	<b>Survey (Wellbore)</b>	<b>Tool Name</b>	<b>Description</b>
0.0	7,348.3	PLAN 1 JUNE 16, 2010 (Wellbore #1)	MWD	MWD - Standard

<b>Summary</b>						
<b>Site Name</b>	<b>Reference Measured Depth (ft)</b>	<b>Offset Measured Depth (ft)</b>	<b>Distance Between Centres (ft)</b>	<b>Distance Between Ellipses (ft)</b>	<b>Separation Factor</b>	<b>Warning</b>
<b>Offset Well - Wellbore - Design</b>						
NOCO ENERGIE 6-3 PAD						
NOCO 25-3 (EXISTING) - Wellbore #1 - EXISING VERT	1,053.5	1,053.4	48.2	43.7	10.752	CC
NOCO 25-3 (EXISTING) - Wellbore #1 - EXISING VERT	1,100.0	1,099.8	48.3	43.6	10.315	ES
NOCO 25-3 (EXISTING) - Wellbore #1 - EXISING VERT	1,450.0	1,447.4	52.5	46.3	8.443	SF
NOCO ENERGIE 3-3 - Wellbore #1 - PLAN 1 JUNE 16, 2010	900.0	900.0	16.0	12.2	4.194	CC
NOCO ENERGIE 3-3 - Wellbore #1 - PLAN 1 JUNE 16, 2010	950.0	950.0	16.1	12.1	3.990	ES
NOCO ENERGIE 3-3 - Wellbore #1 - PLAN 1 JUNE 16, 2010	1,050.0	1,049.9	17.2	12.7	3.853	SF

Offset Design NOCO ENERGIE 6-3 PAD - NOCO 25-3 (EXISTING) - Wellbore #1 - EXISING VERT												Offset Site Error:	0.0 ft
Survey Program: 0-MWD												Offset Well Error:	0.0 ft
Reference		Offset		Semi Major Axis		Distance							Warning
Measured Depth (ft)	Vertical Depth (ft)	Measured Depth (ft)	Vertical Depth (ft)	Reference (ft)	Offset (ft)	Highside Toolface (°)	Offset Wellbore Centre +N/-S (ft)	+E/-W (ft)	Between Centres (ft)	Between Ellipses (ft)	Minimum Separation (ft)	Separation Factor	
0.0	0.0	0.0	0.0	0.0	0.0	-172.87	-48.0	-6.0	48.4				
50.0	50.0	50.0	50.0	0.1	0.1	-172.87	-48.0	-6.0	48.4	48.3	0.11	430.052	
100.0	100.0	100.0	100.0	0.1	0.1	-172.87	-48.0	-6.0	48.4	48.1	0.22	215.217	
150.0	150.0	150.0	150.0	0.2	0.2	-172.87	-48.0	-6.0	48.4	47.9	0.45	107.609	
200.0	200.0	200.0	200.0	0.3	0.3	-172.87	-48.0	-6.0	48.4	47.7	0.67	71.739	
250.0	250.0	250.0	250.0	0.4	0.4	-172.87	-48.0	-6.0	48.4	47.5	0.90	53.804	
300.0	300.0	300.0	300.0	0.6	0.6	-172.87	-48.0	-6.0	48.4	47.2	1.12	43.043	
350.0	350.0	350.0	350.0	0.7	0.7	-172.87	-48.0	-6.0	48.4	47.0	1.35	35.870	
400.0	400.0	400.0	400.0	0.8	0.8	-172.87	-48.0	-6.0	48.4	46.8	1.57	30.745	
450.0	450.0	450.0	450.0	0.9	0.9	-172.87	-48.0	-6.0	48.4	46.6	1.80	26.902	
500.0	500.0	500.0	500.0	1.0	1.0	-172.87	-48.0	-6.0	48.4	46.4	2.02	23.913	
550.0	550.0	550.0	550.0	1.1	1.1	-172.87	-48.0	-6.0	48.4	46.1	2.25	21.522	
600.0	600.0	600.0	600.0	1.2	1.2	-172.87	-48.0	-6.0	48.4	45.9	2.47	19.565	
650.0	650.0	650.0	650.0	1.3	1.3	-172.87	-48.0	-6.0	48.4	45.7	2.70	17.935	
700.0	700.0	700.0	700.0	1.5	1.5	-172.87	-48.0	-6.0	48.4	45.5	2.92	16.555	
750.0	750.0	750.0	750.0	1.6	1.6	-172.87	-48.0	-6.0	48.4	45.2	3.15	15.373	
800.0	800.0	800.0	800.0	1.7	1.7	-172.87	-48.0	-6.0	48.4	45.0	3.37	14.348	
850.0	850.0	850.0	850.0	1.8	1.8	-172.87	-48.0	-6.0	48.4	44.8	3.60	13.451	
900.0	900.0	900.0	900.0	1.9	1.9	-172.87	-48.0	-6.0	48.4	44.6	3.82	12.660	
950.0	950.0	950.0	950.0	2.0	2.0	85.64	-48.0	-6.0	48.3	44.3	4.04	11.971	
1,000.0	1,000.0	1,000.0	1,000.0	2.1	2.1	87.19	-48.0	-6.0	48.3	44.0	4.25	11.342	

CC - Min centre to center distance or convergent point, SF - min separation factor, ES - min ellipse separation

<b>Company:</b>	BAYWATER EXPLORATION & PRODUCTION	<b>Local Co-ordinate Reference:</b>	Well NOCO ENERGIE 6-3
<b>Project:</b>	SEC. 3-T6N-R65W	<b>TVD Reference:</b>	RKB @ 4791.0ft (RKB EST 13')
<b>Reference Site:</b>	NOCO ENERGIE 6-3 PAD	<b>MD Reference:</b>	RKB @ 4791.0ft (RKB EST 13')
<b>Site Error:</b>	0.0ft	<b>North Reference:</b>	True
<b>Reference Well:</b>	NOCO ENERGIE 6-3	<b>Survey Calculation Method:</b>	Minimum Curvature
<b>Well Error:</b>	0.0ft	<b>Output errors are at</b>	2.00 sigma
<b>Reference Wellbore</b>	Wellbore #1	<b>Database:</b>	Landmark
<b>Reference Design:</b>	PLAN 1 JUNE 16, 2010	<b>Offset TVD Reference:</b>	Offset Datum

Offset Design NOCO ENERGIE 6-3 PAD - NOCO 25-3 (EXISTING) - Wellbore #1 - EXISING VERT													Offset Site Error:	0.0 ft
Survey Program: 0-MWD													Offset Well Error:	0.0 ft
Reference		Offset		Semi Major Axis			Distance							Warning
Measured Depth (ft)	Vertical Depth (ft)	Measured Depth (ft)	Vertical Depth (ft)	Reference (ft)	Offset (ft)	Highside Toolface (°)	Offset Wellbore Centre +N/-S (ft)	Offset Wellbore Centre +E/-W (ft)	Between Centres (ft)	Between Ellipses (ft)	Minimum Separation (ft)	Separation Factor		
1,050.0	1,049.9	1,049.9	1,049.9	2.2	2.2	89.78	-48.0	-6.0	48.2	43.7	4.47	10.788		
1,053.5	1,053.4	1,053.4	1,053.4	2.2	2.3	90.00	-48.0	-6.0	48.2	43.7	4.48	10.752 CC		
1,100.0	1,099.8	1,099.8	1,099.8	2.3	2.4	93.40	-48.0	-6.0	48.3	43.6	4.68	10.315 ES		
1,150.0	1,149.7	1,149.7	1,149.7	2.4	2.5	97.99	-48.0	-6.0	48.7	43.8	4.90	9.936		
1,200.0	1,199.5	1,199.5	1,199.5	2.5	2.6	93.98	-48.0	-6.0	49.1	44.0	5.11	9.607		
1,250.0	1,249.2	1,249.2	1,249.2	2.6	2.7	92.29	-48.0	-6.0	49.4	44.1	5.33	9.268		
1,300.0	1,298.9	1,298.9	1,298.9	2.7	2.8	92.75	-48.0	-6.0	49.6	44.1	5.54	8.952		
1,350.0	1,348.5	1,348.5	1,348.5	2.9	2.9	95.10	-48.0	-6.0	50.1	44.3	5.77	8.679		
1,400.0	1,398.0	1,398.0	1,398.0	3.0	3.0	99.01	-48.0	-6.0	50.9	44.9	5.99	8.503		
1,450.0	1,447.4	1,447.4	1,447.4	3.1	3.1	104.10	-48.0	-6.0	52.5	46.3	6.22	8.443 SF		
1,500.0	1,496.7	1,496.7	1,496.7	3.2	3.3	109.97	-48.0	-6.0	55.0	48.6	6.43	8.549		
1,550.0	1,545.8	1,545.8	1,545.8	3.4	3.4	116.16	-48.0	-6.0	58.7	52.0	6.66	8.817		
1,600.0	1,594.8	1,594.8	1,594.8	3.6	3.5	122.28	-48.0	-6.0	63.7	56.8	6.87	9.278		
1,650.0	1,643.6	1,643.6	1,643.6	3.7	3.6	128.04	-48.0	-6.0	70.1	63.0	7.08	9.897		
1,700.0	1,692.2	1,692.2	1,692.2	3.9	3.7	133.25	-48.0	-6.0	77.8	70.5	7.28	10.690		
1,750.0	1,740.6	1,740.6	1,740.6	4.1	3.8	138.56	-48.0	-6.0	86.8	79.3	7.48	11.592		
1,800.0	1,789.1	1,789.1	1,789.1	4.3	3.9	143.38	-48.0	-6.0	96.5	88.8	7.69	12.553		
1,850.0	1,837.5	1,837.5	1,837.5	4.5	4.0	147.31	-48.0	-6.0	106.8	98.9	7.90	13.516		
1,900.0	1,886.0	1,886.0	1,886.0	4.8	4.1	150.55	-48.0	-6.0	117.5	109.4	8.12	14.480		
1,950.0	1,934.4	1,934.4	1,934.4	5.0	4.2	153.25	-48.0	-6.0	128.5	120.2	8.34	15.415		
2,000.0	1,982.8	1,982.8	1,982.8	5.2	4.3	155.53	-48.0	-6.0	139.8	131.2	8.55	16.337		
2,050.0	2,031.3	2,031.3	2,031.3	5.4	4.5	157.46	-48.0	-6.0	151.2	142.4	8.78	17.222		
2,100.0	2,079.7	2,079.7	2,079.7	5.7	4.6	159.13	-48.0	-6.0	162.7	153.7	9.00	18.076		
2,150.0	2,128.2	2,128.2	2,128.2	5.9	4.7	160.57	-48.0	-6.0	174.4	165.2	9.23	18.895		
2,200.0	2,176.6	2,176.6	2,176.6	6.2	4.8	161.84	-48.0	-6.0	186.2	176.7	9.46	19.684		
2,250.0	2,225.1	2,225.1	2,225.1	6.4	4.9	162.95	-48.0	-6.0	198.0	188.3	9.69	20.438		
2,300.0	2,273.5	2,273.5	2,273.5	6.6	5.0	163.94	-48.0	-6.0	209.9	200.0	9.92	21.163		
2,350.0	2,321.9	2,321.9	2,321.9	6.9	5.1	164.82	-48.0	-6.0	221.9	211.7	10.15	21.856		
2,400.0	2,370.4	2,370.4	2,370.4	7.1	5.2	165.62	-48.0	-6.0	233.9	223.5	10.39	22.522		
2,450.0	2,418.8	2,418.8	2,418.8	7.4	5.3	166.33	-48.0	-6.0	245.9	235.3	10.62	23.158		

<b>Company:</b>	BAYWATER EXPLORATION & PRODUCTION	<b>Local Co-ordinate Reference:</b>	Well NOCO ENERGIE 6-3
<b>Project:</b>	SEC. 3-T6N-R65W	<b>TVD Reference:</b>	RKB @ 4791.0ft (RKB EST 13')
<b>Reference Site:</b>	NOCO ENERGIE 6-3 PAD	<b>MD Reference:</b>	RKB @ 4791.0ft (RKB EST 13')
<b>Site Error:</b>	0.0ft	<b>North Reference:</b>	True
<b>Reference Well:</b>	NOCO ENERGIE 6-3	<b>Survey Calculation Method:</b>	Minimum Curvature
<b>Well Error:</b>	0.0ft	<b>Output errors are at</b>	2.00 sigma
<b>Reference Wellbore</b>	Wellbore #1	<b>Database:</b>	Landmark
<b>Reference Design:</b>	PLAN 1 JUNE 16, 2010	<b>Offset TVD Reference:</b>	Offset Datum

Offset Design NOCO ENERGIE 6-3 PAD - NOCO ENERGIE 3-3 - Wellbore #1 - PLAN 1 JUNE 16, 2010													Offset Site Error:	0.0 ft
Survey Program: 0-MWD													Offset Well Error:	0.0 ft
Measured Depth (ft)	Vertical Depth (ft)	Measured Depth (ft)	Vertical Depth (ft)	Reference (ft)	Offset (ft)	Highside Toolface (°)	Offset Wellbore Centre +N/-S (ft)	Offset Wellbore Centre +E/-W (ft)	Between Centres (ft)	Between Ellipses (ft)	Minimum Separation (ft)	Separation Factor	Warning	
0.0	0.0	0.0	0.0	0.0	0.0	0.99	16.0	0.3	16.0	16.0	0.00	N/A		
50.0	50.0	50.0	50.0	0.1	0.1	0.99	16.0	0.3	16.0	15.9	0.11	142.461		
100.0	100.0	100.0	100.0	0.1	0.1	0.99	16.0	0.3	16.0	15.8	0.22	71.294		
150.0	150.0	150.0	150.0	0.2	0.2	0.99	16.0	0.3	16.0	15.6	0.45	35.647		
200.0	200.0	200.0	200.0	0.3	0.3	0.99	16.0	0.3	16.0	15.4	0.67	23.765		
250.0	250.0	250.0	250.0	0.4	0.4	0.99	16.0	0.3	16.0	15.1	0.90	17.823		
300.0	300.0	300.0	300.0	0.6	0.6	0.99	16.0	0.3	16.0	14.9	1.12	14.259		
350.0	350.0	350.0	350.0	0.7	0.7	0.99	16.0	0.3	16.0	14.7	1.35	11.882		
400.0	400.0	400.0	400.0	0.8	0.8	0.99	16.0	0.3	16.0	14.5	1.57	10.185		
450.0	450.0	450.0	450.0	0.9	0.9	0.99	16.0	0.3	16.0	14.2	1.80	8.912		
500.0	500.0	500.0	500.0	1.0	1.0	0.99	16.0	0.3	16.0	14.0	2.02	7.922		
550.0	550.0	550.0	550.0	1.1	1.1	0.99	16.0	0.3	16.0	13.8	2.25	7.129		
600.0	600.0	600.0	600.0	1.2	1.2	0.99	16.0	0.3	16.0	13.6	2.47	6.481		
650.0	650.0	650.0	650.0	1.3	1.3	0.99	16.0	0.3	16.0	13.3	2.70	5.941		
700.0	700.0	700.0	700.0	1.5	1.5	0.99	16.0	0.3	16.0	13.1	2.92	5.484		
750.0	750.0	750.0	750.0	1.6	1.6	0.99	16.0	0.3	16.0	12.9	3.15	5.092		
800.0	800.0	800.0	800.0	1.7	1.7	0.99	16.0	0.3	16.0	12.7	3.37	4.753		
850.0	850.0	850.0	850.0	1.8	1.8	0.99	16.0	0.3	16.0	12.4	3.60	4.456		
900.0	900.0	900.0	900.0	1.9	1.9	0.99	16.0	0.3	16.0	12.2	3.82	4.194 CC		
950.0	950.0	950.0	950.0	2.0	2.0	-102.53	16.0	0.3	16.1	12.1	4.04	3.990 ES		
1,000.0	1,000.0	1,000.0	1,000.0	2.1	2.1	-106.97	16.0	0.3	16.4	12.2	4.25	3.866		
1,050.0	1,049.9	1,049.9	1,049.9	2.2	2.2	-113.92	16.0	0.3	17.2	12.7	4.47	3.853 SF		
1,100.0	1,099.8	1,099.8	1,099.8	2.3	2.4	-122.48	16.0	0.3	18.7	14.0	4.68	3.989		
1,150.0	1,149.7	1,149.7	1,149.7	2.4	2.5	-131.48	16.0	0.3	21.0	16.1	4.89	4.300		
1,200.0	1,199.5	1,199.5	1,199.5	2.5	2.6	-148.18	16.0	0.3	24.5	19.5	5.10	4.816		
1,250.0	1,249.2	1,249.2	1,249.2	2.6	2.7	-160.43	16.0	0.3	29.1	23.8	5.30	5.499		
1,300.0	1,298.9	1,298.9	1,298.9	2.7	2.8	-169.17	16.0	0.3	34.6	29.1	5.50	6.296		
1,350.0	1,348.5	1,348.5	1,348.5	2.9	2.9	-175.35	16.0	0.3	40.9	35.2	5.70	7.171		
1,400.0	1,398.0	1,398.0	1,398.0	3.0	3.0	-179.72	16.0	0.3	47.9	42.0	5.90	8.118		
1,450.0	1,447.4	1,447.6	1,447.6	3.1	3.1	177.59	16.2	0.6	55.6	49.5	6.10	9.106		
1,500.0	1,496.7	1,497.1	1,497.1	3.2	3.2	176.47	16.9	1.7	63.8	57.5	6.30	10.128		
1,550.0	1,545.8	1,546.5	1,546.4	3.4	3.4	176.41	18.0	3.4	72.7	66.2	6.50	11.181		
1,600.0	1,594.8	1,595.6	1,595.4	3.6	3.5	177.05	19.6	5.9	82.3	75.6	6.70	12.292		
1,650.0	1,643.6	1,644.4	1,644.1	3.7	3.6	178.14	21.6	9.1	92.8	85.9	6.91	13.441		
1,700.0	1,692.2	1,692.9	1,692.4	3.9	3.7	179.51	24.0	12.9	104.3	97.2	7.11	14.665		
1,750.0	1,740.6	1,741.1	1,740.3	4.1	3.8	-178.25	26.8	17.5	116.6	109.3	7.34	15.886		
1,800.0	1,789.1	1,789.0	1,787.8	4.3	3.9	-175.62	30.1	22.6	129.3	121.7	7.58	17.054		
1,850.0	1,837.5	1,836.8	1,835.1	4.5	4.0	-173.14	33.7	28.4	142.3	134.4	7.84	18.145		
1,900.0	1,886.0	1,884.3	1,882.0	4.8	4.2	-170.78	37.7	34.9	155.6	147.5	8.10	19.197		
1,950.0	1,934.4	1,931.5	1,928.5	5.0	4.3	-168.53	42.2	41.9	169.2	160.9	8.39	20.179		
2,000.0	1,982.8	1,979.1	1,975.2	5.2	4.4	-166.46	46.9	49.4	183.2	174.6	8.67	21.126		
2,050.0	2,031.3	2,026.7	2,022.0	5.4	4.6	-164.67	51.6	56.9	197.4	188.4	8.97	22.008		
2,100.0	2,079.7	2,074.3	2,068.8	5.7	4.7	-163.13	56.3	64.4	211.7	202.5	9.27	22.835		
2,150.0	2,128.2	2,121.9	2,115.5	5.9	4.9	-161.78	61.0	71.8	226.2	216.6	9.58	23.611		
2,200.0	2,176.6	2,169.5	2,162.3	6.2	5.0	-160.59	65.7	79.3	240.7	230.8	9.89	24.336		

<b>Company:</b>	BAYWATER EXPLORATION & PRODUCTION	<b>Local Co-ordinate Reference:</b>	Well NOCO ENERGIE 6-3
<b>Project:</b>	SEC. 3-T6N-R65W	<b>TVD Reference:</b>	RKB @ 4791.0ft (RKB EST 13')
<b>Reference Site:</b>	NOCO ENERGIE 6-3 PAD	<b>MD Reference:</b>	RKB @ 4791.0ft (RKB EST 13')
<b>Site Error:</b>	0.0ft	<b>North Reference:</b>	True
<b>Reference Well:</b>	NOCO ENERGIE 6-3	<b>Survey Calculation Method:</b>	Minimum Curvature
<b>Well Error:</b>	0.0ft	<b>Output errors are at</b>	2.00 sigma
<b>Reference Wellbore</b>	Wellbore #1	<b>Database:</b>	Landmark
<b>Reference Design:</b>	PLAN 1 JUNE 16, 2010	<b>Offset TVD Reference:</b>	Offset Datum

Reference Depths are relative to RKB @ 4791.0ft (RKB EST 13')  
Offset Depths are relative to Offset Datum  
Central Meridian is -105.500000 °

Coordinates are relative to: NOCO ENERGIE 6-3  
Coordinate System is US State Plane 1983, Colorado Northern Zone  
Grid Convergence at Surface is: 0.55°



<b>Company:</b>	BAYWATER EXPLORATION & PRODUCTION	<b>Local Co-ordinate Reference:</b>	Well NOCO ENERGIE 6-3
<b>Project:</b>	SEC. 3-T6N-R65W	<b>TVD Reference:</b>	RKB @ 4791.0ft (RKB EST 13')
<b>Reference Site:</b>	NOCO ENERGIE 6-3 PAD	<b>MD Reference:</b>	RKB @ 4791.0ft (RKB EST 13')
<b>Site Error:</b>	0.0ft	<b>North Reference:</b>	True
<b>Reference Well:</b>	NOCO ENERGIE 6-3	<b>Survey Calculation Method:</b>	Minimum Curvature
<b>Well Error:</b>	0.0ft	<b>Output errors are at</b>	2.00 sigma
<b>Reference Wellbore</b>	Wellbore #1	<b>Database:</b>	Landmark
<b>Reference Design:</b>	PLAN 1 JUNE 16, 2010	<b>Offset TVD Reference:</b>	Offset Datum

Reference Depths are relative to RKB @ 4791.0ft (RKB EST 13')  
Offset Depths are relative to Offset Datum  
Central Meridian is -105.500000 °

Coordinates are relative to: NOCO ENERGIE 6-3  
Coordinate System is US State Plane 1983, Colorado Northern Zone  
Grid Convergence at Surface is: 0.55°

