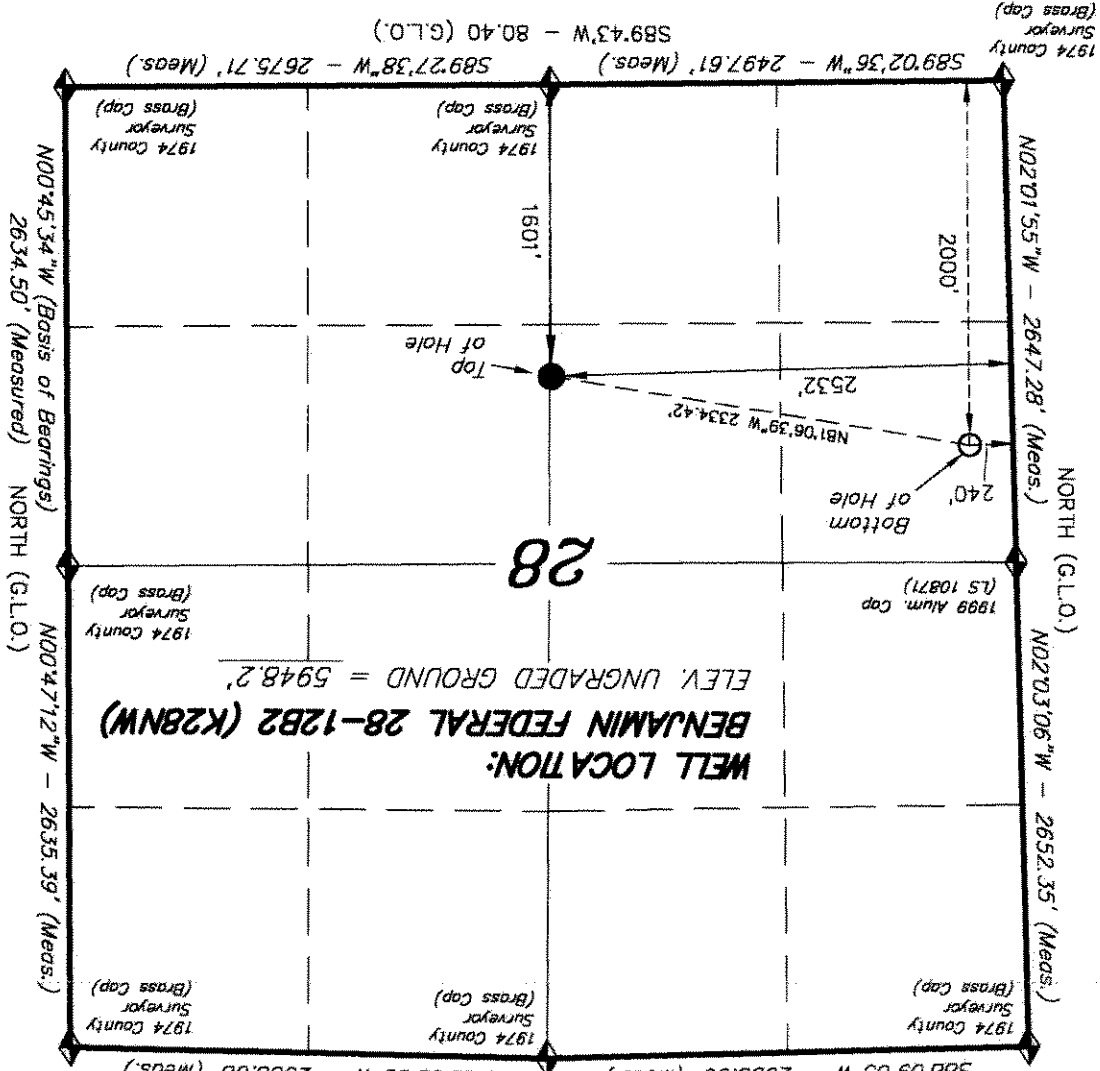


76S, R93W, 6th P.M.

IMPROVEMENT NOTE:

See addendum to legal plat (sheet 2u) for visible improvements within 400' of the proposed well pad.

588°09'05"W - 2653.65' (Meas.)
 N89°00'39"W - 2638.68' (Meas.)
 N89°34'W - 80.10' (G.L.O.)
 N89°00'39"W - 2638.68' (Meas.)

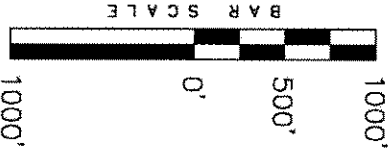


◆ = SECTION CORNERS LOCATED
 Basis of elevation is the Ritte 2 Triangulation Station. 39°31'53.80" N Lat. & 107°47'07.78" W Long. (NAD 83). Elevation = 5323.1' (NAVDB88).

NAD 83 (SURFACE LOCATION)
LATITUDE = 39°29'39.57"
LONGITUDE = 107°46'49.58"
(107.780438)

WELL LOCATION, BENJAMIN FEDERAL 28-12B2 (K28NW), LOCATED AS SHOWN IN THE NE 1/4 SW 1/4 OF SECTION 28, T6S, R93W, 6th P.M. GARFIELD COUNTY, COLORADO.

NOTES:
 1. Well footages are measured at right angles to the Section Lines.
 2. Bearings are based on Global Positioning Satellites observations.
 3. G.P.S. Operator: C.D. Slaugh, (PDP) = 2.8



THIS IS TO CERTIFY THAT THE ABOVE PLAT WAS PREPARED FROM FIELD NOTES OF A PROFESSIONAL SURVEYOR MADE BY ME OR UNDER MY SUPERVISION. THE LOCATION HAS BEEN STAKED ON THE GROUND AS SHOWN ON THE PLAT, AND THAT THE SAME ARE TRUE AND CORRECT TO THE BEST OF MY KNOWLEDGE AND BELIEF.

REGISTERED LAND SURVEYOR
 REGISTRATION No. 30125
 STATE OF COLORADO
 PROFESSIONAL LAND SURVEYOR

TRI STATE LAND SURVEYING & CONSULTING
 180 NORTH VERNAL AVE. - VERNAL, UTAH 84078
 (435) 781-2501

DATE SURVEYED: 06-11-10	SURVEYED BY: C.D.S.	DATE DRAWN: 06-14-10	DRAWN BY: M.W.	REVISIONS: L.C.S. 10-25-10
SHEET 2p		OF 11		



ENCANA OIL & GAS (USA) INC

RECEIVED