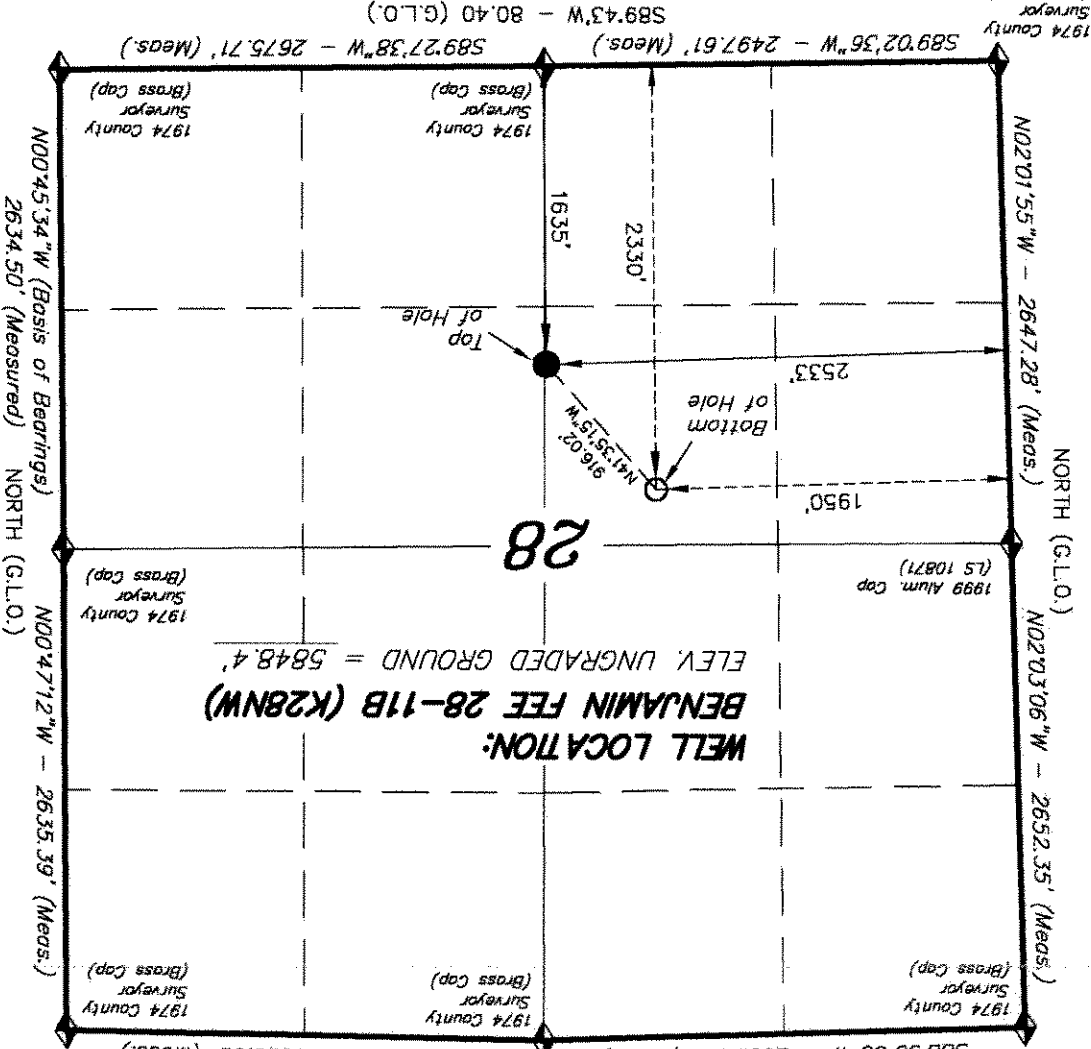


IMPROVEMENT NOTE:
 See addendum to legal plat (sheet 2) for visible improvements within 400' of the proposed well pad.
T6S, R93W, 6th P.M.
 T6S, R93W, 6th P.M.

889'00'39"W - 2638.68' (Meas.)
 893'4"W - 80.10' (G.L.O.)
 889'00'39"W - 2638.68' (Meas.)



1974 County Surveyor (Brass Cap)
 589'02'36"W - 2497.61' (Meas.)
 589'43"W - 80.40' (G.L.O.)
 589'27'38"W - 2675.71' (Meas.)
 Basis of elevation is the Rifle 2 Triangulation Station, 39°31'53.80" N Lat. & 107°47'07.78" W Long. (NAD 83). Elevation = 5323.1' (NAVD88).

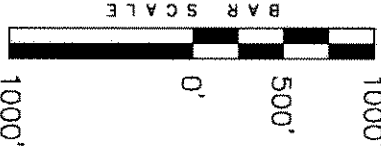
◆ = SECTION CORNERS LOCATED

NAD 83 (SURFACE LOCATION)
 LATITUDE = 39°29'39.90" (39.494418)
 LONGITUDE = 107°46'49.58" (107.780438)

WELL LOCATION, BENJAMIN FEE 28-11B (K28NW), LOCATED AS SHOWN IN THE NE 1/4 SW 1/4 OF SECTION 28, T6S, R93W, 6th P.M. GARFIELD COUNTY, COLORADO.

NOTES:

- Well footages are measured at right angles to the Section Lines.
- Bearings are based on Global Positioning Satellites observations.
- G.P.S. Operator: C.D. Slough. (PDOP) = 2.8



THIS IS TO CERTIFY THAT THE ABOVE PLAT WAS PREPARED FROM FIELD NOTES OF A PROFESSIONAL SURVEYOR MADE BY ME OR UNDER MY SUPERVISION. THE LOCATION HAS BEEN STAKED ON THE GROUND AS SHOWN ON THE PLAT, AND THAT THE SAME ARE TRUE AND CORRECT TO THE BEST OF MY KNOWLEDGE AND BELIEF.

STATE OF COLORADO
 REGISTERED LAND SURVEYOR
 REGISTRATION No. 30125
 # 30125

TRI STATE LAND SURVEYING & CONSULTING
 180 NORTH VERNAL AVE. - VERNAL, UTAH 84078
 (435) 781-2501

| | | | |
|----------------------------|---------------------|-------------------------|-----------------------------|
| DATE SURVEYED: 06-11-10 | SURVEYED BY: C.D.S. | DATE DRAWN: 06-14-10 | REVISOR: L.C.S. 10-25-10 |
| | DRAWN BY: M.W. | | SCALE: 1" = 1000' |
| SHEET 21 | | OF 11 | |



RECEIVED

ENCANA OIL & GAS (USA) INCORP U.S. 2011