

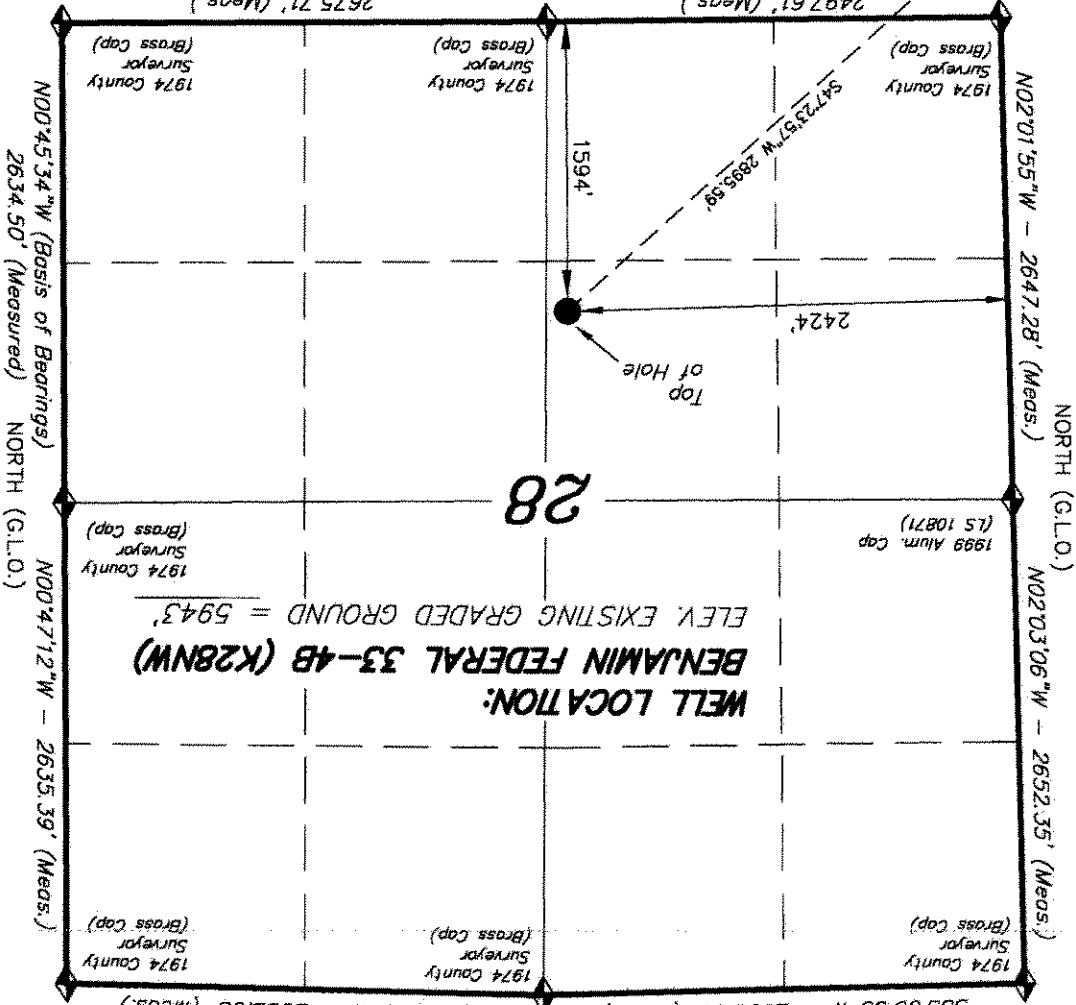
**IMPROVEMENT NOTE:**

See addendum to legal plat (sheet 2u) for visible improvements within 400' of the proposed well pad.

**T6S, R93W, 6th P.M.**

N89.34°W - 80.10 (G.L.O.)

S88.09°05"W - 2653.65' (Meas.)  
N89.00°39"W - 2638.68' (Meas.)



**NAD 83 (SURFACE LOCATION)**  
 LATITUDE = 39.2939.48°  
 (39.494301)  
 LONGITUDE = 107.4650.95°  
 (107.780820)

Station, 39.31°53.80' N Lat. & 107.47°07.78' W Long. (NAD 83). Elevation = 5323.1' (NAVD88).

◆ = SECTION CORNERS LOCATED

○ = Bottom of Hole  
 See Sheet 299

2497.61' (Meas.)  
 S89.02°36"W  
 2675.71' (Meas.)  
 S89.27°38"W

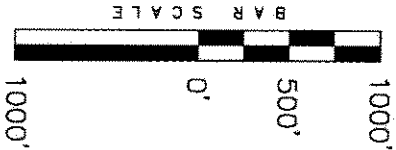
DATE SURVEYED:	06-11-10	SURVEYED BY: C.D.S.
DATE DRAWN:	06-14-10	DRAWN BY: L.C.S.
REVISID:	L.C.S. 10-25-10	SCALE: 1" = 1000'

**TRI STATE LAND SURVEYING & CONSULTING**  
 180 NORTH VERNAL AVE. - VERNAL, UTAH 84078  
 (435) 781-2501

THIS IS TO CERTIFY THAT THE ABOVE PLAT WAS PREPARED FROM FIELD NOTES OF SURVEYS MADE BY ME OR UNDER MY SUPERVISION. THE LOCATION HAS BEEN STAKED ON THE GROUND AS SHOWN ON THE PLAT, AND THAT THE SAME IS TRUE AND CORRECT TO THE BEST OF MY KNOWLEDGE AND BELIEF.

**REGISTERED LAND SURVEYOR**  
 REGISTRATION NO. 30125  
 STATE OF COLORADO  
 ORIGINAL LAND SURVEYOR

- NOTES:**
- Well footages are measured at right angles to the Section Lines.
  - Bearings are based on Global Positioning Satellite observations.
  - G.P.S. Operator: C.D. Slough, (PDOP) = 2.8



WELL LOCATION, BENJAMIN FEDERAL 33-4B (K28NW), LOCATED AS SHOWN IN THE NE 1/4 SW 1/4 OF SECTION 28, T6S, R93W, 6th P.M. GARFIELD COUNTY, COLORADO.



**RECEIVED**  
**ENCANA OIL & GAS (USA) INC**  
 NOV 08 2010